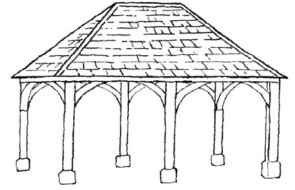


Charlbury Chronicle



Volume 27 Number 4

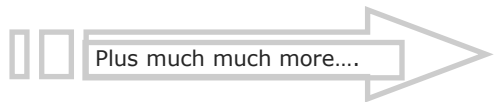
Winter 2023

The Charlbury Chronicle is a free quarterly local community publication run by volunteers covering news and events for Charlbury and the surrounding area



Inside this issue:

Charlbury Museum	4
Chalbury School Football success	12
Coffee Break Page	13
Corner House & Memorial Hall	17
Sustainable Charlbury	19
CRAG	28
Cornerstone	31
Charlbury Church Services	32
Expedition to Kyrgyzstan	34
Charlbury Community Centre	40



Contacts:-

Editor: editor.chronicle@outlook.com
Advertising: adverts.chronicle@outlook.com
Distribution: brian_murray_guide@yahoo.co.uk

Charlbury Garage

Hixet Wood, Charlbury, OX7 3SB

01608 810898

08:30 – 17:00 Monday to Friday

Attending to motorists' needs for over 40 years, we offer a local, friendly, helpful & trustworthy service

- MOT & Pre-MOT
- Tyres & Exhausts
- Servicing
- Batteries
- Aircon
- Bodywork

Competitive tyre prices

Half-price MOT with Full Service
Courtesy car available
Cars bought & sold



www.charlburygarage.co.uk



From the Editor

Well it's that time of the year, when we will be all finding the Christmas decorations and looking forward to buying the tree. I can't believe how quickly its come round again!

The late night shopping in Charlbury will be on 8th December—so please do support our local businesses and buy your presents there. You don't have to wait until then, as Cotswold Frames have many gifts, and the Deli some delicious grub! And our many eateries that are now in Charlbury; the Bull, the Bell, Chloe's to name but a few!

Also the WI will be holding their Carol Service on 5th December at 7pm in St Mary's. And please stay for coffee, tea, mulled wine and mince pies! Any money raised from the collection will go to Cornerstone.

The Community Workshop is now up and running so please do drop in and find out what's on offer, see P10.

This year Street Fair again raised a lot of money for the upkeep of the Corner House and Memorial Hall,

which as you can see will be used to upgrade the Corner House. See P17.

Our thanks must go to John Dora who has been chairman of Street Fair since 2016. He had now decided to "retire" and so we need a new Chairman. Fancy doing it? It is good fun!

We are sorry to have to say farewell to Brian Murray and Shelagh Scott who have for so many, many years been in charge of the distribution of the Chronicle. Their unstinting efforts have ensured that we all receive our copies every quarter without fail. They have now handed over to Maureen and John Walker, who we are very grateful to for volunteering.

And a warm Charlbury welcome to our new vicar, Fergus Butler Gallie who will be joining us in January.

If you have any ideas on what else you would like to see in the Chronicle, please do contact me at:-

editor.chronicle@outlook.com

Happy Christmas to you all.

Susanna Finch

**Please note the deadline for articles for the Spring issue is 1st February 2024
Please send all articles to *editor.chronicle@outlook.com***



Charlbury Street Fair 2023

The 2023 Street Fair was my last as Chair of the amazing Street Fair Committee and I think it has been a wonderful year; we were able to raise a whopping amount of around £9,000. This will go towards the upkeep of the Corner House and Memorial Hall. This is all the more pertinent as the planning application for alterations to the Corner House has recently been submitted. By the time this edition of the Chronicle has been published, I should have presented a cheque to the Corner House and War Memorial Hall Charity as my last act as Chair. It's been a privilege.

Our theme, *Nurturing Nature in Charlbury*, was enthusiastically reflected in the creative outfits for the fancy dress competition and the art competition, where the winning painting was framed by Cotswold Frames.

Highlights

Some of the highlights of the 2023 Street Fair included:

- The Egg Throwing competition on a fabulous warm Friday evening
- The Children's Fancy Dress Parade on Saturday afternoon
- A Classic Car display
- Morris Dancing by Wychwayz Morris
- More Morris Dancing and Sea shanties by Charlbury Finstock Morris
- The 'Mini Landrover Challenge' organized by the Scouts
- Live music by *The Standard* and *The Vodka Shots* on Saturday evening – excellent entertainment!

Thank You

The organizers of the Street Fair would

like to thank everyone who helped make the event possible, including the sponsors, volunteers, and performers. Special thanks go to our special guest, the Lord-Lieutenant of Oxfordshire, Marjorie Neasham Glasgow BEM DL, who officiated at the opening of the the Fair.

Let's thank Anna Cherry and her team for providing tea and cakes, Dave Oates for organizing the music, Charlbury Finstock Morris and Wychwayz Morris for their dancing and sea shanties and Jo Paton for helping to distribute the programme leaflets, and of course all of the Committee members.

We also thank our principal sponsors – The Bell Hotel, the Bull Inn, Fairfax Estate Agents and Charlbury Dental Practice as well as those contributing bottles for the Tombola and, importantly, prizes for the Draw and Silent Auction.

Planning for 2024

Planning for the 2024 Street Fair begins soon. The organisers are looking for new volunteers to join the committee and help with the preparations for the Fair. The Fair will be held on September 21st, 2024.

Please watch out for information on this on www.charlbury.info and Facebook and on posters around the town. We are also looking to invite "new faces" to shadow some of our committee to share activities, learning from our experienced team. So if you'd like to know more, or to volunteer in any capacity, even just for a couple of hours on the day, do contact csfchairman@charlburystreetfair.org

Committee Changes

There have been a few changes this year. **Shirley Holgate** stepped down from the Committee and was previously hugely involved in fundraising, seeking Sponsors and Silent Auction donations and much more. Shirley was on the Committee for over ten years and is already missed! Thank you Shirley, for your unwavering support and counsel to me, and to our Committee more generally. We still see Shirley and always welcome her advice, and offer her our very best wishes.

Tom Joy also is moving on from his role as Treasurer – Tom is one of those who are quietly busy in the background, making sure our accounts are in order and advising on financial outgoings and income and invoicing. A vital part of the team. Thank you Tom for your help here over difficult times that involved the challenging Covid years. We wish you well!

May I welcome **Tilly Shirlaw, Karen Simpson** and **Doug Paton** as new Committee Members. Tilly, Karen and Doug are already making a tremendous positive difference to how the Committee operates. Thanks for joining us!

The Committee can help new members in various ways – coaching, shadowing, chatting and sharing experiences are some of the things they can do. New Committee volunteers are always sought and are much appreciated.

Farewell from the outgoing Chair

Since I have stepped down as Chair of the Street Fair Committee, I would like to express my sincere gratitude to all of the enthusiastic volunteers who give their time and energy to organising and running the Fair. Over the past few years, I have been incredibly impressed by their dedication to upholding the Fair's longstanding tradition and their willingness to offer advice and support.

Thank you to all of the current and past volunteers. As I intimated above, it's been a privilege to have worked with you!

May I wish the Fair *All the Best* for the future. Long may the Fair continue.

Farewell!

*Prof. John Dora
Chair Street Fair Committee 2016-2023*

For up-to-date information, see www.charlbury.info and www.charlburystreetfair.org and the Facebook page for Charlbury is a Town & not a Village

To contact the Chair by email please use csfchairman@charlburystreetfair.org.



Averose Pharmacy

Your local community Pharmacy for you & your family

- ✔ NHS and private prescriptions
- ✔ Free delivery service to your door
- ✔ Text message service
- ✔ Travel vaccination service
- ✔ Blood pressure checks
- ✔ Flu vaccination service
- ✔ Weight loss service

**PRIVATE WALK
IN SERVICE FOR
Back Pain, Acne,
Skin Care, Cystitis
and others**

Visit our website www.averosepharmacy.co.uk

Call 01608 810315

OPENING HOURS:
Mon-Fri: 9am-6pm
Sat: 9am-1pm
Sun: Closed

Address: Averose Pharmacy,
Market Street, Charlbury, OX7 3PL

CHARLBURY FARMERS' MARKET on the Playing Close between 9am and 1pm on Saturday, Dec 9th

Charlbury Farmers' Market is administered by Thames Valley Farmers' Market Co-operative Ltd. and organised by Geoff & Janet Burroughs.

Any queries, please contact Geoff or Janet on the contact details below.

Email: burroughs871@btinternet.com
tel: 07969 208518, 01608 810260



Charlbury Museum & Heritage Centre

'This museum is a treasure'

'What a gem'

These comments written in the visitors' book reflect the pleasure that people experience once inside the museum browsing the collections. One person likened the museum to 'a Tardis', although Dr. Who is not in residence, its contents are rather like entering a time machine! This year's exhibition '**Hidden Treasures Hidden Histories**' certainly did spin one back in time to the age of Anglo-Saxons and the Romans; the discoveries of local detectorists caught the imagination through silver coins from past centuries and other fascinating fragments of history.

The museum is grateful for the private loans for this display and to Neil Pakenham-Walsh for his donations to the permanent collection.

Our museum may be small but it still attracts visitors from beyond Charlbury and the UK. This year we were pleased to welcome tourists from: Australia, Canada, China, Greece, Portugal, Romania, Saudi Arabia, South Africa, U.S.A., and Uzbekistan.

Behind closed doors

The museum is now closed for the winter season but our work continues as we plan next year's exhibition, do cataloguing, conservation and prepare paperwork for Accreditation, so no hibernating!

Our Trustees are keen to develop small groups of volunteers to assist with some museum tasks following the successful model of the **Photographic Project**, led by Judy Dod and Deborah Jackson and their volunteer helpers who are scanning photos. Christine Gowing has also been giving valuable assistance in liaising with the Accreditation Advisor of South East Museums for the museum trustees. Recently the advisor visited the museum to have a look around, giving very

positive encouragement and advice. Gaining Accreditation status will shape the future of our community's unique heritage asset.

Would you like to get more involved with the museum?

In addition to the valuable team of volunteer stewards who do a great job of welcoming visitors during the year, the museum is now asking for volunteer help on specific tasks please:

- Assisting the museum team with cataloguing the collection
- Hands-on work with cleaning and conservation of objects
- Treasurer position from March 2024

If you can spare a some time and would enjoy the opportunity to get more involved with the museum, we would love to hear from you:

info@charlburymuseum.org.uk

Who are the Trustees of Charlbury Museum & Heritage Centre?

Currently there are five trustees of the CIO: Barbara Allison, Tom Bartlett, Ann Lovett, Alice Millea and Sue Rangeley.

If you are interested to join us as a trustee please get in touch

2024 Exhibition plans

History of The Playing Close: for centuries this special area of the town has played a pivotal role in the lives of the people of Charlbury. A small group of museum researchers are discovering some fascinating facts and intriguing stories all centred on the Playing Close. This land is owned by the Gifford Trust who is kindly lending some antique documents for the exhibition. More details to come in the spring issue of Charlbury Chronicle. **Plus:** the popularity of the 'Hidden Treasures - Hidden

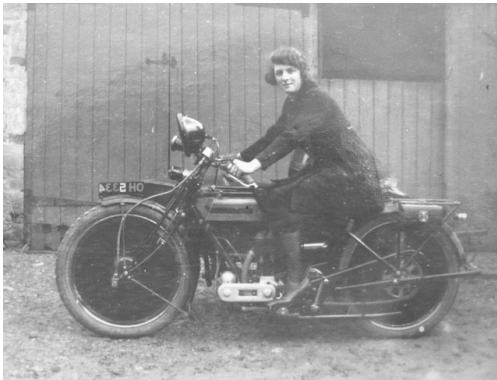
Histories' displays, and the donations from Charlbury metal detectorist Neil Pakenham-Walsh have inspired a new display shelf for 2024 devoted to these lost bygone.

A final note This year the museum has been the fortunate recipient of some wonderful donations: the Christopher Bartlett Collection (Charlbury honey producer); an early 19thc. longcase clock by James Street; Charlbury artefacts from Nick & Sarah Potter; metal detecting finds from Neil Pakenham-Walsh; Sir Peter Parker commemorative train name plate from CLPG. The museum is always interested to receive donations of historic Charlbury-related items. Please get in touch: info@charlburymuseum.org.uk

Sue Rangeley
Charlbury Museum & Heritage Centre



The History of the Playing Close : 'Egypt' circa 1920 (called 'The Hollies' 1910-1920s)



Iris Blunt, 1922 who lived at 'The Hollies' ('Egypt')



A 'beehive' thimble (15th/16th c.) & two buckles (circa 16th - 18th c.) found by Neil Pakenham-



Chain measure used to measure out the Oxpens allotments, early 20thc. Donated by Nick Potter, bought at Kearsley's farm sale

Message from:

**Charlbury Town Council
Nine Acres Management Committee
Charlbury Community Centre
Charlbury Football and Sports Club
Charlbury Town Youth Football club**

**Nine Acres Recreation Ground =
sports pitches and a children's playground.
It is NOT a dog bin.**

Enough is enough! Dog fouling at Nine Acres MUST stop now.

Patrols are being organised by the above organisations and all dog fouling will be reported to the District Council.



If you want to report offenders yourself, please use this link:

<https://www.westoxon.gov.uk/environment/litter-street-cleaning-and-dog-fouling/>

Dog fouling

Dog fouling is when a person permits a dog in their charge to foul in a public place and fails to clean it away immediately after. Failure to clean up dog

fouling on public land is classed as a criminal offence and anyone found failing in their duty can be issued with a Fixed Penalty Notice of £50. Failure to pay this fine, results in you being taken to court and paying up to £1000.

A public place refers to land to which the public has access to within built up areas of the district, such as roads, gutters, footpaths, verges, pedestrian areas, parks, school playing fields, sports grounds, and cemeteries.

Dog waste is a problem because:

- Dog faeces carry many germs that can cause illness and in extreme cases could result in blindness
- It is offensive to smell and to look at, and is extremely unpleasant to step in

Any fouling in a public place should be quickly removed using a suitable plastic bag and dispose of the dog waste in one of the dual-purpose litter and dog waste bins around the area.

Dogs on leads

Dogs MUST remain on leads on Nine Acres Recreation Ground

This byelaw will also now be enforced by the patrols. Dogs should not be let loose at any time and on any part of Nine Acres Recreation Ground.

Unfortunately, if this regulation is not adhered to, then the next step will be to ban dogs on Nine Acres. What a shame for the dog owners who obey!!



DERWENT HOUSE

Home of British Craft and Makers

*Oxfordshire's exciting interiors store for British handcrafted Sofas & Armchairs,
Organic Mattresses & Beds, Furniture and Homewares*



Visit Derwent House, 3 Bridge Street, Witney, Oxfordshire, OX28 1BY T: 01993 212678
Free parking to the rear of the store

derwenthouseliving.co.uk



This Christmas what will you discover ?

Market St ~ Charlbury ~ OX7 3PL ~ 01608 811805
www.cotswoldframes.co.uk ~ info@cotswoldframes.co.uk





Charlbury Beer and Wine Circle

The Charlbury Beer and Wine Circle's 2023/24 season started in September with the AGM at which our chairman, Ant Horn reported on another successful year.

With the official business of the AGM soon over, there was plenty of time for socializing and for us to be tested and entertained by Ant's light-hearted quiz.

Our October meeting was a blind tasting hosted by members John and Liz, who brought us six of their 'everyday favourites' from around the world starting with a beautiful, light, sparkling white which many of us mistakenly identified as a champagne.

At the time of writing, we are looking forward to our two next meetings; November will bring a return visit by the Circle's very good friend Monty Phillips, a.k.a. The Wine Tipster. Monty can always be relied upon to bring some interesting wines and offer them in his inimitable professional manner. That will be followed in December by our Christmas Dinner in the Memorial Hall when, following the successful formula of recent years, we have professionals catering for us.

Beyond that, we will continue with a varied programme of visits, tours, talks, tastings - including an all-South African wine tasting (a first for the Circle), as well as our annual barbeque and garden party.

New members and guests are always welcome at our tastings in the Memorial Hall and if you would like to attend, or receive further details of our programme, please email either:

sec.charlburybeerandwine@yahoo.com
or
charlburybeerandwinecircle@gmail.com

Lynette's 90th birthday

Lynette Murphy (the previous editor and founder of the Chronicle) reached the grand age of 90 in October and at the Friday coffee morning in the Community Centre it was celebrated by all, with Majorie Glasgow saying a few words.

A wonderful cake baked by Wendy Bailey had all the candles on for Lynette to blow out! A good time was had by all!



CHRONICLE ADVERTS

Advertise your business in the **Charlbury Chronicle** and reach over 1600 residences.

To place an advert please ring
Graham Jowett on 01608 810666 or
email:
adverts.chronicle@outlook.com



**Moss Removal & Roof Cleaning
Brickwork Cleaning
Patio & Driveway Cleaning
Solar Panel & Skylight Cleaning
Installation of Bird Protection**

**Enhance the appearance of your
property with our quality
assured, friendly service**

**01865 362797
info@mossinator.co.uk**



Charlbury's own Community Workshop

**A place for everyone — what will *you* come
and do?**

**We're open every Tuesday morning from
9.00 to 12.30 AND ON THURSDAYS 2.00-4.00 !**

**We still need lots of help to organise the work
spaces, and in particular we need people to get the
craft and fabric room up and running.**

So come along and get involved !

www.charlburycommunityworkshop.org.uk



Charlbury Garden Society

I am writing this on a gloriously sunny day just after our AGM and re-vamped Harvest Supper.

It was marvellous to see so many members at the AGM; and good to share our ideas for the future there. We included our plans to plant bulbs around the town and other greening projects which includes helping re-vamp the Community Centre planting and donating money to other areas such as the new wildlife project at the Bowls Club.

We are always keen to hear of other ideas that people may have, so do get in touch. We will also need physical help to carry out some of these tasks. We are a fairly small committee and so reliant on our 'active friends' to support us in various ventures.

We welcome new members at any time – membership is extremely good value at £10 for a couple living at the same address and £7 for a single membership.

Not only does this give you free entry for our talks and 10% off at local garden centres, it also supports the greening and planting projects around the town for the benefit of all. Our website gives you more details <https://www.charlburygardensociety.org.uk/membership/>

One of the most popular events of the year is our wreath making event and it will be wonderful to see the Memorial Hall full of creative people (and some of us not so creative types!) led by Mathew Franklin-Maiden – our very own local flower farmer. The history of bringing foliage into the house for Christmas is an old one, and like many traditions a

mixture of pagan ritual and Christian belief. Evergreen plants were a reminder in pagan celebrations that life would 're-grow' in the coming months.

These traditions were later adopted by Christianity and the use of trees and wreaths were thought to have originated in Northern Europe and although it is popularly believed that Prince Albert started the tradition of the Christmas tree, it is thought that it was Queen Charlotte, the German wife of King George III who introduced it in 1800.

Whatever their origins it is lovely that we keep the traditions alive – with our wreath making and our wonderful Christmas Tree festival.

In January at the start of the year we will be welcoming Andrew Mills, the New Head Gardener at Blenheim Palace to tell us about his new plans for the gardens at Blenheim.

More details will follow to members in our regular newsletters.

A very merry Christmas and a happy New Year to everyone.

Alison Derham



Celebrating our Football Success at Charlbury School



On Wednesday 1st of November, 2023, we went to Witney for a football tournament, as we had won the Chipping Norton partnership tournament last month. We arrived in Witney and after around 10-15 minutes, it started to rain and it got heavier until it was hailing; then there was thunder and one slash of lightning (we were worried it was going to be cancelled). Luckily for us, it started to clear up, although it was still freezing cold!

We played 6 games against different primary schools in West Oxfordshire. We won all our matches without conceding any goals. Eva scored an outstanding free kick goal from the halfway line! We now have been invited to the county finals to represent West Oxfordshire in February.

Our under 11's school team included Mia-Bella, Helena, Violet, Georgina, Jemima, Abigail, Rose, Izzy, Ellie and Eva.

We are also very thankful to Mrs Claridge, Vickie and Stephanie for making this all possible.

Go, Charlbury sport...

By Eva and Violet Year 6.



Coffee break pages

Compiled by Michele Marietta & Miles Walkden

Charlbury word search

C	R	E	S	U	O	H	R	E	N	R	O	C	L	COOP
C	M	U	V	W	G	T	N	T	G	E	G	L	I	CORNBURY
O	U	C	B	H	L	C	H	H	A	R	I	U	T	GIGACLEAR
R	S	G	M	I	O	A	E	E	B	M	G	S	T	ST MARYS
N	E	R	N	T	V	N	G	B	B	U	A	O	L	CRICKET
B	U	A	C	E	E	I	B	E	S	U	C	R	E	MUSEUM
U	M	V	E	H	S	T	O	L	T	N	L	T	M	CORNER HOUSE
R	S	T	M	A	R	Y	S	L	O	M	E	L	O	LITTLE MONKEYS
Y	N	G	K	R	S	A	D	C	D	K	A	O	N	DELI
S	C	Y	A	T	O	T	A	E	C	W	R	H	K	THE BELL
M	R	E	B	N	E	B	L	I	O	G	W	R	E	THE BULL
V	H	L	B	U	B	I	R	C	O	N	E	E	Y	WHITE HART
L	E	E	P	L	A	C	E	G	P	L	L	C	S	LEE PLACE
E	B	C	N	E	T	O	A	S	E	I	Y	C	E	BACON
														GWR
														GLOVES
														AONB
														TINA



News from Charlbury Pre-School—Winter 2023

We are delighted to share the exciting adventures and learning experiences that have filled our preschool over the past half term. The atmosphere has been buzzing with curiosity and creativity, and we have been captivated by the children's enthusiasm for learning.

In our Monster Phonics sessions, we have been exploring the magical world of sounds. The children have been honing their attention and listening skills by guessing various sounds and imagining where they might encounter these sounds outside our preschool.

They embraced their artistic spirits, constructing our very own Monster Phonics Land using an array of textures and materials, enriching their expressive art and design abilities. We embarked on an exciting journey to explore the world of fireworks using a diverse range of multimedia and the Halloween season brought delightful surprises as the children delved into the enchanting world of pumpkin carving. Witnessing their excitement as they explored the inner workings of a pumpkin and repurposed the seeds for various activities was truly heart-warming.

Our garden has transformed into a haven of sensory and messy play. From crafting our own snow to concocting magical potions with an assortment of ingredients. Through these activities, they have developed fine motor skills, mastering the use of pipettes with precision and care.

Looking ahead, we have an array of captivating activities planned. A fire-themed exploration awaits, with the invaluable assistance of our local fire service. Additionally, we will delve into the significance of Remembrance Day, creating beautiful poppies in honour of this solemn occasion. We are embarking on an exciting journey to explore the

world of fireworks using a diverse range of multimedia and we'll be using lots of colours and shapes to learn maths in a fun way. Making learning a truly colourful and engaging experience. In the spirit of giving, we will host a 'Spotacular' Dance Party to raise funds for Children in Need, fostering a sense of community and generosity among our young learners.

As the festive season approaches, we eagerly anticipate our participation in the Christmas Tree Festival at St Mary's Church. The children have been busy crafting beautiful decorations that will adorn our tree, reflecting the creativity and joy that permeates our preschool.

Fundraising and Appreciation

Celebrate the holiday season with us at our lively fundraising Christmas party on December 9th, taking place at our charming Memorial Hall. Join in the merriment and joy as we gather for a party filled with laughter, music, and of course Santa! Tickets can be purchased at the door or online through Eventbrite. To stay in the loop and get all the exciting details about the event, visit our website -www.charlburypreschool.org.uk.

We extend our heartfelt gratitude to our dedicated committee, as well as our current and past parents, for their unwavering support. Their incredible efforts during the Oxford Half Marathon have raised crucial funds, enabling us to enhance our preschool experience. We also celebrated a memorable Sushi Pop-Up event, featuring the talented Mizue and special guest superstar Japanese chef Tadashi!

The event took place on Saturday, 18th November, at Chloe's restaurant, where attendees indulged in exquisite sushi creations.

This special evening not only provided a delightful culinary experience but also contributed to our fundraising efforts. We



are also immensely thankful to the Charlbury Garden Society for their generous donation, empowering us to acquire essential resources for environmental exploration. Special thanks are due to Edmund Blok for his generous contribution from the sales of his stunning summer photographs. We would also like to include a heartfelt thank you to Charlbury Exhibition Foundation (CEF) for their dedication to enhancing our building's heat efficiency and sustainability.

Could you make a difference?

We are always looking for volunteers, committee members and social media experts, just to mention a few. Do you have an idea for a fundraising event? Maybe you could organise or help publicise one? Would you like to provide a financial donation? If you would like to get involved don't hesitate to get in touch directly or visit our website.

How to get in touch

We still have spaces available for full and partial days, so if you or someone you know is looking for high quality early years education for a 2 to 4-year-old child, do get in touch. To know more about our beloved Pre-school or to talk to a member of the team, you can reach us through the following channels:

www.charlburypreschool.org.uk

admin@charlburypreschool.org.uk

01608 811200

We look forward to seeing many of you in the setting and at our next community event and wish you all a lovely winter.

theWI
INSPIRING WOMEN

**CHARLBURY
WOMEN'S
INSTITUTE**

We meet in the Memorial Hall at 7.30pm on the third Wednesday of each month.

We're not just Jam & Jerusalem; come & see what we get up to!

- Lifelong Friendship & Support
- All Ages & Abilities
- Education, Hands-on-Activities
- Talks on Fascinating Subjects
- Community Involvement
- Interest Groups
- Outings, Walks & Meals Out
- Share Experiences & Have Fun

Come as a visitor to see what it's like. We look forward to welcoming you!

For more information, contact: Heather Hill on charlburywi@oxfordshirewi.co.uk



OXFORDSHIRE

The Lawrence Home Nursing Team

(LHNT) provided compassionate end of life support for my wife Sarah, enabling her to spend her last days at home surrounded by her family when the hospital said that there was nothing more they could do for her. Their wonderful support should be available to anyone who sadly needs it.

The NHS provided superb care for Sarah during the day with a team of District Nurses but they do not provide support during the night if for example extra pain relief is required.

Guided by a patient's needs and wishes the LHNT nurses work closely with GPs and community nurses to help manage symptoms and give each person the care that is right for them. And by helping people to relax and feel like themselves the nurses make sure patients and their families get the most out of their last few moments together. The team offers care whenever it's needed, whether that's for a few hours in the day or through the night.

LHNT look after anyone, 18 and over, who is in their last weeks of life. Patients are referred by GPs, community and specialist nurses, hospitals, hospices and sometimes family members.

LHNT receives less than 10% of its income from the government. The rest comes from donations which is why I have become a volunteer and fundraiser. I competed in the 10-mile Great South Run in October to raise money for this fantastic charity.

If you would like to find out about this charity, perhaps become a supporter or village ambassador please visit www.lawrencehomenursing.org

This year's Christmas cards including a design by Charlbury artist, Susan Woolley, are on sale now. Please visit the website for a list of local stockists.

*David Best
Volunteer of the Lawrence Home
Nursing Team*

D S JONES

BUILDING, ROOFING & PROPERTY MAINTENANCE

All aspects of building, roofing and property maintenance undertaken
For all enquiries call or email

07496149990

dsmaintenance@hotmail.com
Instagram: @dsjonesbuilding



Country Roofing

Roofing & Flat Roof Specialist

- Tiling & Slating
- Flat & Felt Roof Systems
- Guttering & Fascias
- Chimney Works
- EPDM Rubber Roof Systems
- All Roof Repairs
- Moss Removal
- Aluminium Gutter Systems
- 35 Year Guarantee
*new roof installations
- Velux/Dormer Works

Fully Insured

All Major Credit Cards Accepted

01993 700 725 / 07789 556495

info@countryroofingltd.co.uk

www.countryroofingltd.co.uk



Corner House, Garden, and Memorial Hall updates

Volunteers who run the much-appreciated Cornerstone project in the Corner House say they are delighted with our installation of infrared heating. This "new" approach to heat replaces an inefficient night-storage heater, the heat from which was inadequate. Far-infrared heating has not yet become popular in the UK but it is widespread in other parts of Europe.

Infrared activates the invisible far end of the magnetic spectrum that surrounds us all every day. It is precisely the kind of heat we receive from the sun, which warms both us and objects, but not directly the air around us. Heating air is very expensive, but heating things is more effective in keeping us warm and much less costly to run.

The result of all this, as well as volunteers and customers feeling warm, is also much less damage to our environment. Climate change is so serious we all need to consider how we can reduce our impact on the natural world. This is one way which at the same time makes us warmer on cold days and reduces our electricity bills.

There is the possibility to introduce far-infrared heating also to other rooms in the Corner House. It is flexible heat available instantly when switched on and means we don't need to heat areas that are not currently in use.

So here is another reason to visit Cornerstone to experience modern far-infrared heating and think about it for your own home or other places. We show how it can be fitted relatively easily to an old building without much disruption.

As well as Cornerstone, which is a very welcome benefit to our community, all other rooms in the Corner House are in use including the increasingly-popular second-hand bookshop (quality books at bargain prices), the Art Room, and the global headquarters of Health Information For All! These features in addition to the town museum which occupies a large part of the ground floor (with separate entry).

We are hoping it will be possible to implement our plan to reposition the staircase and perhaps provide a simple lift to make access to the first floor easier. The plan also opens up the lobby area and provides an additional reception close to the garden entrance. When done, the garden entrance is likely to become the main entrance to the building with Market Street as a secondary way in.

Although winter will soon be upon us, the garden remains open as a community space to be enjoyed by all. Many activities take place in the Hall, including especially the magnificent Sunday-afternoon concerts organized by CRAG which are joys not to be missed featuring top musicians of national standing.

Roy Scott, chairman of the trustees

CHRONICLE ADVERTS

Advertise your business in the **Charlbury Chronicle** and reach over 1600 residences.

To place an advert please ring
Graham Jowett on 01608 810666
or email:
adverts.chronicle@outlook.com

Charlbury Society

Our annual summer tea was held on a rather soggy weekend at the end of August, but was well attended and it was good to see so many members there despite the frequent showers and dashes into the Memorial Hall.

Our first talk of the season in early October was by the amazing Ian Wilkinson of FarmEd, which I'm sure many of you have visited and sampled their excellent lunches from the kitchen garden .

He described the development of the plot , and the diverse 8 year crop rotation with livestock and how the soil has been gradually improved. He explained in detail the dilemma facing farming with the urgent challenge of climate change, and the destruction of the natural world, to which modern farming methods have contributed significantly.

FarmEd is a place where many different groups and professions can come to exchange ideas as a forum for open, honest debate on the future of feeding the country.

During October, Chris Gowing, Secretary of the Charlbury Society committee arranged for 14 of us to go on a sponsored walking tour of Oxford to learn about the places JRR Tolkien and CS Lewis lived, worked and taught, as members of The Inklings, an informal literary discussion group during the early 1930s to late 1940s. Our specialist guide was really excellent and we hope to engage him again next year for a further tour on a different subject, perhaps incorporating a visit to one of the Colleges for lunch.

We would of course, welcome any suggestions and help to organise other visits and still have an outstanding deposit for the tour of Owlpen Manor, this having been put on hold during the Pandemic because of the requirement to organise a bus to get us there. Please do

contact me if you feel this is something with which you could help our small committee.

As you read this we will just have had a talk on Drovers' Roads by Tim Healey, on how Drovers were responsible for carving an extraordinary network of lanes throughout Britain.

In December Liz Woolley will tell us about Felicia Skene who was one of Oxford's social reformers, driven to help those excluded by society. She was the first woman in England to be officially appointed as a prison visitor, and was a tireless advocate for prison reform.

In January enjoy an entertaining ride across England and Wales with author and Blue Badge guide Sean Callery. We'll hear how the A40 links Egypt, France, Poland and Spain ... via Oxfordshire with many stories and surprises on the journey.

Have you ever wondered what happens to our recycling once it has been collected?

In February, Dr Arciszewska , WODC Cabinet Member for the Environment will address how the recycling collection is sorted, where it goes, what the transport issues are and how they manage the wrong stuff in bins, amongst other things. An opportunity for us to understand how and if recycling can significantly improve our environment .

Members, we hope you will join us by Zoom for the next three months, after that we shall go back to in person talks when the winter is over.

We welcome new members, or those wishing to attend a particular talk, please contact our membership secretary Angus, treas.charlsoc@gmail.com for further details.

Nikki Rycroft
chair.charlsoc@gmail.com

Charlbury to invest in environmental projects of benefit to the community. This arrangement provides a significant pot of funding for local good causes, worth around £30,000 a year over the 25-year life of the solar farm.

Decisions on which projects to support are made by SusCha's board of trustees. The board usually meets once a month and is currently composed of six trustees, all of them unpaid volunteers who live in Charlbury.

Recent SusCha grants

Projects that have recently received financial backing from SusCha include:

- Installation of triple glazing, LED lighting and upgraded insulation at Charlbury Bowls Club.
- Upgraded insulation and installation of secondary glazing at Charlbury Pre-School.
- Recreating an area of traditional hay meadow on the Mill Field.
- Establishing a partnership with Charlbury Primary School to assist with measures to cut energy bills. This follows an earlier project to teach and get children interested in sustainability.
- Buying a polytunnel for the Kitchen Garden People, a hyper-local food production and veg-box distribution project.

While SusCha has a special interest in energy efficiency in new and old buildings, we also welcome grant applications on many other topics, including nature restoration and biodiversity, supporting community organisations, and education projects linked to the environment. In addition, we run campaigns and work closely with other local groups on tackling climate change and creating a low carbon future for Charlbury and areas nearby.

To apply for funding, click on the heading GRANTS on our website at: sustainablecharlbury.org. Alternatively, contact tjcrisp@icloud.com if you fancy becoming a trustee or a volunteer.

Mark Gregory

Funding renovation of the Corner House

It'll take rather more than one thousand, one hundred and four pounds to solve the global problem of climate change. But - hopefully- a grant for this amount will be extremely useful in helping to make the planned refurbishment of the Corner House, one of the main community buildings in Charlbury, as energy efficient as possible.

The funding comes from Sustainable Charlbury (also known as SusCha). It has paid for an assessment of what is needed to make sure a remodelled Corner House has low energy bills and low carbon emissions. Cosy Homes, an organisation that specialises in retrofitting existing buildings to high environmental standards, has been commissioned to carry out the assessment.

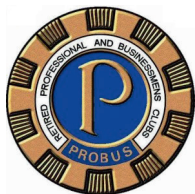
This is the first step towards a much bigger contribution. A few years back, SusCha made a commitment to pay up to £100,000 for things like low energy lighting and heating and better insulation. It is all about enabling the Corner House to become more comfortable and usable as a community building, as well as energy efficient.

If planning permission is obtained and the restoration goes ahead, SusCha will be one of several sources of funding and ideas for what will inevitably be a complex and expensive project. The Corner House is a listed building.

Link to Southill Solar

In case you're wondering, the source of SusCha's funds is its link to Southill Solar, a renewable energy generating project. This is located about a mile outside Charlbury and is run by Southill Community Energy, a non-profit enterprise.

Surplus revenues from the solar farm's operations are transferred to Sustainable



Probud Lunch October 6th 2023, “Meet Victoria Prentis KC MP”

The October Probud lunch meeting at Witney Lakes Resort was held on a Friday, instead of the regular Wednesday. The reason being was that the guest speaker was the Right Honourable Victoria Prentis KC MP. She had been busy all week at the Conservative Party Conference, but kindly found time to come and meet us for an informal, mainly non-political chat in the form of a question-and-answer session led by Probud Chairman, Paul Jackson.

The constituency boundaries are going to be changing at the next General Election, whenever that may be, resulting in Victoria “losing” Bicester but “gaining” Charlbury, Chipping Norton and surrounding areas. Constituent numbers will remain similar with a loss and gain of approximately 40% each way. She is thus keen to familiarise herself with these new areas in advance, should she be re-elected, and the lunch provided a good opportunity for her to meet and chat to us as potential constituents, taking in any issues or concerns we may have.

Victoria is very much a local, being born in Banbury’s Horton Hospital and brought up in nearby Aynho in a farming family. The family still farms in Aynho and Victoria now lives close by in Somerton. She lives with her husband, two daughters and Ukrainian guest whom she clearly adores and regards as an extra daughter!

She studied law, English literature and Medieval Languages at the University of London and Cambridge University and developed an interest in politics as an NUS rep at Cambridge University. She says her interest in law was inspired by watching “Rumpole of the Bailey” on TV!

She began working in the Civil Service, as a lawyer for the treasury solicitors’

department, a job she enjoyed for 17 years. During that time she became involved in campaigning on such issues as HS2 (very much against) and when Tony Baldry, the retiring MP for Banbury, suggested to her she should consider a career in politics she took his advice and subsequently was elected as his successor in May 2015, becoming the Member of Parliament for North Oxfordshire.

Victoria has held many positions in Government, including Minister of State at DEFRA (Department for Environment, Food and Rural Affairs) and DWP (Department for Work and Pensions) and since October 2022 has been Attorney General for England and Wales. All of these positions have been closely linked to her skills and interests.

Clearly passionate about her job as an MP the only thing that irks her about it is when things get whipped up by the press! On questioning about bringing the role of Government into education she has been active in visiting primary schools and has regularly organised visits for year 6 pupils to Parliament for four hour educational tours. She is not an advocate of compulsory voting.

She was a backer of Rory Stewart for leader of the Conservative party and has read his new book “Politics on the Edge” ...in which she is featured.

On asking if she aspires to one day being Prime Minister, she gave a firm “no”, stating she couldn’t think of anything worse! She would, however, quite fancy a go at being Foreign Secretary as linguistics have always been one of her great passions. She would like to see a greater mix of ages in Government, local people for local representation (as she very much is), and MPs sticking to what they know, as there is very little “looking up time” when asked questions. She

considers her role as Attorney General a pinnacle in her political career, enjoying being very comfortable in the job due to her training, experience and background in law.

Victoria is a firm "remainer" and dislikes the whole idea of referendums, much preferring decision making to be the Government's task and not left to the people. On the subject of the electoral first past the post system at Westminster, she felt that system is more stable, confessed to recent instability in Government, though this was perhaps more due to the pandemic and the Brexit issue.

Questions from the audience followed,

with Victoria commenting that she would be glad to see more expert scientific input being adopted by Government. She believes we are slowly improving regarding the much publicised pollution of our rivers (The Environment Act is a step in the right direction) but admits there is a long way to go and believes agricultural practice needs to be better targeted to achieve more.....she does swim in the River Cherwell nearby to her home!

This was a fascinating insight into the world of a serving MP, and Victoria was warmly thanked for sharing her time and experiences with us all.

Dean Vincent



St Marys Church Charlbury 5th Christmas Tree Festival

We are excited about holding the Christmas tree festival again this year, and hope that many organisations, groups and families from Charlbury will participate by sponsoring a tree. There are still a few trees left to sponsor, so please get your name down for one. Come and enjoy the fun and be part of this lovely event.

The festival will begin early evening of Friday 8th December and run until 28th December. We have 40+ trees available to decorate

We will be having 2 competitions this year, one for children's trees, which will all be placed inside the church, and the other for the adult's trees which will be outside on the churchyard path

As well as the display of trees, there will be a 'Christmas tree lighting up' celebration, with food and drink, free to all on Friday 8th December, from 5.00pm – 6.00pm. Everyone is welcome. Come and enjoy the spectacle of the trees inside and outside the church.

There will be a Christmas Quiz on Saturday 9th December. Doors open at 7.00pm. Festive snacks will be served, with a paying bar. More information and timings about both events will be on the Charlbury website. This will be great fun, and Patrick Derham has kindly agreed to

be our Christmas Quiz master for the evening.

The Christmas Tree Festival is a special way of bringing the community together, to share the joy of Christmas, raising money for the local church and all the community work it does.

Please support the festival, and keep St Mary's at the heart of the town by either coming to the events, or by offering to help in some way.

Ways of helping include

- Sponsoring a tree to be decorated by your organisation, school, charity or family. Booking forms will be available from Hilli Waller or the Charlbury website link.
- Providing help in setting up or catering support for the Festival
- Sponsoring the publicity, the opening event, the quiz or the set up of the festival

If you have any queries, please get in touch with Hilli Waller or the Parish Office.

Hilli Waller
charlburyctf@gmail.com
St Mary's Church Office

JUST RETIRED OR ABOUT TO?

JUST ARRIVED IN CHARLBURY?

JUST WANT TO MEET NEW
FRIENDS?

JUST COME ALONG TO LEARN
MORE



Probus Club of Charlbury

"OPEN HOUSE"

COMMUNITY CENTRE 12.30 -2.00

WEDNESDAY 3RD JANUARY
MULLED WINE/MINCE PIES

HAPPY NEW YEAR

www.charlburyprobus.co.uk

07974 565618

Charlbury Chronicle

Help

We are pleased to report that our recent appeals for help have been successful but we still need help with the Advertising.

Without our advertisers we cannot pay our printers

Please contact Susie Finch editor.chronicle@outlook.com or Graham Jowett, gjowettchronicle@btinternet.com to find out what's involved... help keep the Charlbury Chronicle dropping through everyone's doors each quarter.



Charlbury Library News

It's hard to believe we're nearly into 2024! What happened?!

Charlbury Library continues to be well used by local customers and by those from further afield when they visit the Community Centre or Nineacres. We do our best to regularly refresh our stock, particularly with our adult and junior fiction titles, and you should find that the newest titles are forward-facing on the shelves, "New to Us" pod, or on the children's trolley.

We will have a new children's Christmas collection of books from the end of November so do come and take a look.

In line with OCC policy, the smaller libraries such as Charlbury will be unstaffed between Christmas and New Year. However, as normal, the library is accessible whenever the Community Centre is open and their Christmas hours are as follows:

December 25th & 26th – Closed
December 27th through to 31st – Open
10am-4pm
January 1st - Closed

Please remember to bring your library card with you if you wish to use the self-service machine during unstaffed times. The self-service machine takes debit and credit card payments, but not cash.

After a very long break, Charlbury Library are finally able to offer monthly Digital Helper sessions again on Monday mornings. The lovely Susie Finch will be able to spend some one-to-one time in the library with anyone who has pre-booked an appointment and is looking for help, either with specific queries or just a general confidence booster with digital technology. You don't have to be a library customer to qualify. Look out for the adverts in the library and on the Charlbury.info website for how to sign up for the next session.

Our lovely library is only staffed part-time and during sessions when staff aren't there, we rely on volunteers to keep the library running smoothly. If you feel you could commit to approximately one session per month, for 2 ½ hours, please get in touch. You would either be working alongside staff or another volunteer and there's usually plenty to do. If you're interested, or just want to find out more, please leave a message by phone or email with your contact details and staff will get back to you.

Merry Christmas to you all and a Happy New Year!!!

Julie Ward
Library Manager
01608 811104
charlbury.library@oxfordshire.gov.uk

CORNER HOUSE AND MEMORIAL HALL

Office: 07826 056496
Office hours: Mon 9.30am - 11.30am; Wed & Sat: 9am to 12 noon
Emergency Contact:
Roy Scott (01608 810562)



News from the Charlbury Patient Participation Group.

The CPPG Steering Committee meets approximately every 6 weeks with the Deputy Practice Manager, Sally Long. At these meetings concerns, ideas and comments including those that we have received from patients are discussed with Sally. News from the Practice is posted on The Charlbury website when appropriate. In addition we assist with vaccination clinics and are available for administrative volunteering if necessary. The Steering Committee currently consists of 8 members and there is a 'virtual' patient group which all patients of Charlbury Medical Centre are encouraged to join. They will receive minutes of our meetings and can e-mail the CPPG with any comments. To join, e-mail: patientgroup.charlbury@nhs.net. At our last meeting we discussed staff and administrative changes at CMC which are detailed below. We agreed that it would be useful to have this information continuously up-dated on the CMC website and are pressing for this.

Update on the Charlbury Medical Centre (CMC)

Charlbury Medical Centre would like to remain a family doctor practice and currently has 5,500 patients. Most patients who use the surgery are aware of the presence of **Ben Haydon-Johnson** the advanced paramedic who works Monday, Tuesday, Wednesday and Friday. He has proved invaluable in triaging calls which has speeded up the allocation of appointments. He also has pre-booked consultations with patients. We have had very positive feedback both from CMC and from patients regarding his appointment.

Dr. McIntyre is the lead physician in CMC and is the clinical lead in palliative care. Her working days are Wednesday, Thursday, Friday.

Dr. Mason joined the CMC in mid-September and has been allocated

patients from Dr. Jones' list. She is the safe-guarding lead at CMC. Her working days are Monday, Tuesday, and Wednesday morning.

Dr. Khan remains working at CMC as a locum doctor on Thursday.

Dr Priai is working as a locum from home carrying out telephone consultations on Mondays and Fridays

Nursing Team.

Kirsty McVey and Lin Winstone are registered nurses. Kirsty runs a **respiratory** clinic on Thursday morning and a **diabetic** clinic on Wednesday morning. The practice is considering bringing in a baby immunisation clinic.

Health Care Assistants. Michelle, Yvonne, Vicky
Mental Health Practitioner. Sacha King works at CMC on Thursday. Patients can self-refer for a consultation

Diagnostic Physiotherapist. Niall. Patients can self-refer for a consultation.

Management team.

Although **Dr. Brookes White** has retired as a GP she remains as a partner of the Practice together with **Wesley Rouse** who is financial manager.

Kathy Gale is practice manager and **Sally Long** is deputy practice manager.

Clinical Pharmacists x2. will deal with changes in hospital prescriptions and annual medication reviews. They can answer patients' questions about prescribed medicines, side-effects and possible side-effects.

Dispensers x2.

Receptionists. Mary, Jackie, Amy, Kim, Jodie



News from the Charlbury Patient Participation Group.

In addition there are secretaries and administrative staff, all of whom contribute to the care of patients.

Making an appointment

Receptionists at CMC are not described as 'care navigators', if there is any doubt as to whether a patient should be seen urgently, their role is to take the call and pass it on to Ben or one of the doctors to make the decision.

Patients are asked if they would like a face to face or a telephone consultation. It is always best to try and make an appointment to see your designated doctor who knows you and your condition. This will save time at the consultation.

Telephone lines are open for same day urgent appointments from 8-9:30 am., although usually all same day appointments have been allocated by 9.00am.

If it has not been possible to get a same day appointment patients will be asked to ring back the following day, stating that they have tried to get an appointment the previous day. Reception will then make every effort to secure an appointment on that day. It is not always easy for patients to assess whether their condition is 'urgent', but if they feel that their condition cannot wait for 2-3 weeks it is reasonable to ask for a same day appointment.

If possible working patients are offered appointments if possible to fit in with the patient's working pattern. Some patients are referred to the local pharmacy for diagnosis and advice.

If you do not need a same day appointment or for any other queries please ring after 9:30 am.

If you have a comment or complaint this can be made on the CMC's website or in a letter delivered to the surgery.

Test Results. If there is any abnormality with your test result you will be told. It is always possible to check your test result online via Patient Access or via the App.

CPR training. The Patient Group facilitated five training sessions in which 70 people were trained by our local South Central Ambulance Service first responder in life-saving techniques and how and when to use a defibrillator.

Vaccination Programme. In October CMC ran three COVID and flu vaccination clinics for eligible patients of the practice supported by volunteers. A total of 1,373 COVID vaccines and 1324 'flu vaccines were delivered. In addition 2 nasal 'flu vaccination clinics have been recently run for CMC's youngest patients.

Thank you to Charlbury Town Football and Sports Club for once again providing the facilities for the clinics.

MacMillan Coffee Morning. CMC hosted a coffee morning in October which was a great success. £325:00 was raised and the surgery was full of people laughing and chatting and enjoying the amazing cakes. Special thanks to Mary (Reception) and Lisa (Dispensary) who did much of the organising.

Please do consider joining the CPPG. patientgroup.charlbury@nhs.net. There is no commitment. However, if you do join, please read the e-mails which will be sent to you regarding updates and news from CMC.

Deborah Hofman



Charlbury Bowls Club

We are now mid-season in short mat as you read this article. The Members are really benefiting from our new building extension in the game of short mat, and we are also reaping the benefits of our newly triple glazed windows and doors and LED lighting systems which will cut down our carbon footprint and help with the cash flow in reduced energy bills.

The club boasts five league teams for short mat league; three teams play on a Tuesday or Wednesday evening, and two more play on a Mon- Friday afternoon. All teams play on a two mat game of four players on each mat (a team of 8) against other teams and play each other both home and away.

So far the teams are spread apart at the very top, in the middle of the league and as I write, two teams at the bottom have yet to start but positions can change very quickly.

More information can be obtained by visiting our Face book page [facebook.com/charlburybowlsclub](https://www.facebook.com/charlburybowlsclub) or our website www.charlburybowls.co.uk. If you need questions answered quickly you can send an email to : enquiries@charlburybowls.co.uk and a response will be issued.

Short mat extends far beyond just Charlbury, as the club is affiliated to Oxfordshire Short Mat Bowls Association (OSMBA), and English Short Mat Bowls Association (ESMBA). We have a very strong representation on both the county and national level, helped as our club has probably the best playing surface and environment in the county. Also the club loves to play friendly matches at the week-end with other local teams for the fun and comradery that this game produces.

Please remember that all short matches and Competitions are open to all sexes and abilities and only a few have aged

range qualifications, and again this year we will continue to play short mat through the summer both socially and with competitive teams. We welcome players of various disabilities and have several qualified coaches and a very strong committee dedicated to Health and Safety and Safeguarding for all its members.

On the social side the club house boasts a fully stocked kitchen and a very well stocked bar. We have internal themed fun sessions and more formal events planned for 2024.

The outdoor fixture card is starting to take shape. A national Disability game final will again be held at the Charlbury OxBrew green. We will enter both a mens and a ladies county league team, and also the Mixed triples league, along with other trophies and cups including the Hawker cup. The club will be touring the English Riviera staying at the TLH Leisure resort in July. Many of our sponsors will be hosting events and more information on this and our open days to follow.

More locally we will be celebrating Christmas with our own Dinner party at the club on December 2nd where we also expect to relieve the bar of most of its stock.

Our BIG BINGO will be on Monday 11th December doors open at 6pm Eyes down at 7pm sharp, you are requested to come early to get the best seats in the house.

If you require any information on the Club, please email: enquiries@charlburybowls.co.uk.

Wishing all members and readers a very Merry Christmas and a healthy new year.

Ron Smith
secretary@charlburybowls.co.uk

Charlbury Bowls Club

Ticknell Piece Rd



Christmas



8 games &
2 Specials.
6 books—£8
6 flyers—£1
per game



Monday 11 December

Doors open 6.00pm, start 7.00pm, Bar

Charlbury Christmas Trees

Pick your own and pre-cut trees
Belgium Blue • Norway Spruce • Nordmann

December 2-3, 9-10 & 16-17

Opening hours **9.30 – 4.00pm**

Please check for updates on: www.charlbury.info



Halcyon Honey Farm
Woodstock Road, Charlbury, OX7 3ET
Tel: 01608 810260



CHARLBURY REFUGEE ACTION GROUP

It has been a busy few months for CRAG. We recently ran another collection of suitable clothing, sleeping bags, blankets, tents, hygiene supplies and other desperately needed items for refugees.

CRAG supporters have been even more generous than before, including a special Harvest Festival collection by St Mary's Church, so we have just delivered a large load of items to a collection point in Yarnton, to be picked up later by Care4Calais. Your generosity continues, if possible at even higher levels, and we are all deeply grateful. All these donations will make a real difference to the welfare of refugees, as the cold weather sets in. Thank you!

Thanks to your amazing support, we raised a total of over £29k in the last financial year. Our regular Sunday tea concerts are one of the main ways we raise money, and October's jazz concert with Dorian Ford and friends was a great start to the 23/24 season. We were delighted that despite it being a beautiful afternoon, we had an audience of almost 100 and raised over £1,400. We sent this money directly to the Hope Project in Lesvos, Greece.

The Hope Project is one of six partner charities providing refugee relief that we have decided to support on an ongoing basis. The others are:

- Asylum Welcome – a local charity offering information, advice and practical support to asylum seekers, refugees and vulnerable migrants living in Oxfordshire.
- Collective Aid Subotica, who provide help to the many displaced people who end up in the north of Serbia trying to cross the external border into the EU.

- Refugee Community Kitchen, who provide thousands of nourishing meals a day for displaced people in France and the UK.
 - Safe Passage, a UK charity which supports safe routes and helps child refugees reunite with their families.
- Care4Calais, a volunteer-run refugee crisis charity working with refugees in the UK, France and Belgium.

There will be more Sunday tea concerts in the New Year, including a first appearance at CRAG by internationally acclaimed composer and pianist Lionel Sainsbury on Sunday January 7th, in a sparkling programme of Bach, Chopin, and Lionel's own compositions. We are also planning a very special gala concert in May with some world-renowned virtuoso musicians. Details to be announced!

Since all the concert expenses are covered by a generous grant from The Evenlode Foundation, we are able to give every single penny of the ticket sales directly to our partner charities. Please see charlbury.info or our website at <https://www.charlburyrefugee.org.uk/> for more details.

We're very pleased that CRAG has now been granted charitable status by the Charity Commission, which means we can now claim Gift Aid on individual donations.

If you'd like to support CRAG by organising a fundraising event for us, please contact us at info@charlburyrefugee.org.uk.

Thank you for your interest and support.

The CRAG Team



Christmas Cracker of a Quiz

Mark your calendars for what promises to be a festive evening to remember: the Christmas Tree Festival Quiz!

Saturday 9th December -7.00pm for a 7.30pm start at St. Mary's Church.

Rumour has it that our resident Quizmaster Elf, Patrick Derham will be wearing his best North Pole attire. If true, that sight alone would be worth the price of admission

Speaking of which, Tickets will £12.00 per head and Teams will be made up of 6 people. Festive snacks will be served and Beer and wine will be available to purchase.

Please contact Dine Glasgow dglasgow@theridgegroup.com for tickets or details.

St Mary's Christmas Services

Ignite contemporary worship - Sunday 10th December 6pm in St Mary's Church. Join us to worship. Refreshments from 5.45pm.

Messy Nativity – Sunday 3rd December 3pm St Marys Church. For families with preschool and primary school aged children. Contact parishoffice@charlburychurch.uk to book your tickets.

Choral Evensong – Sunday 3rd December 6pm St Marys Church.

Christmas Services

Sunday 17th December

3pm Traditional Candlelit Carol Service, All Saints, Shorthampton

Christmas Eve

4pm Family Carol Service, St Mary's Church

6pm Carol Service, St Mary's Church

11.30pm Midnight Communion, St Mary's Church

Christmas Day

8am Holy Communion, St Mary's Church

9am Holy Communion, All Saints, Shorthampton

10.30am Christmas Morning Parish Communion, St Mary's Church



St Teresa's RC Church Christmas 2023

**Gaudete Sunday
Advent Carols**

17th December 3pm

**Mass of Christmas Night
with Carols**

Christmas Eve 8pm

**Mass of Christmas Day
Christmas Day 9.15am**

All Welcome

Cornerstone

At the Corner House

St Marys working in the community

Cornerstone runs at The Corner House in Market Street, at the centre of Charlbury and we are open Monday – Saturday 10am - 1pm. You can come and help yourself to local and surplus fruit and vegetables, and often other surplus foods. We work with Charlbury Deli, Chloes, Oxford Food Hub and SOFEA to access surplus food as well as other local sources.

Our community food shelf is always stocked for people to help themselves from when they need to. Second hand books, games and jigsaws are available for a small donation and we run a school uniform exchange for Charlbury Primary School uniform.

Food support can be provided for households needing a bit of help during a challenging financial time. For information or to self-refer please email

cornerstone@charlburychurch.uk

We are in our third year of being open and see that so many residents are enjoying visiting Cornerstone, for surplus produce, a chat or support when needed. Unfortunately, the apple harvest is not great this year and so our apple supplies are limited – but we often have plenty of other surplus in store. Many thanks to Christine Elliott for all the picking of fruit.

School Uniform

Over the school summer holidays, we were able to make up 22 school uniform bags for local children attending five local schools. These provided a mixture of new tops, trousers, school jumpers or skirts, and PE kits. Thrive North Oxfordshire very kindly provided a school shoe voucher for each child - thank you Thrive! Many thanks to supporters of Cornerstone including the WI who also donated to the uniform costs.

Household support

We have the support of a family worker who continues to come alongside our vulnerable families offering support and signposting. Our Learning Café support for pupils after school has commenced

again this term working with a small number of children who require a bit of extra help.

We have received three pallets of food over the last year from an anonymous donor through West Oxfordshire District Council. The contents included basics such as pasta, rice, pasta sauce, salad dressing, cereal, teabags, tinned meat and fish, and juice. This as well as other surplus food and a supermarket top up order, is all used in our Friday food bags - currently we are providing between 16 and 25 parcels each week for households in Charlbury who need some assistance.

Grants applications, costs and donations Cornerstone is funded purely by donations and grants. Of the three grant applications submitted before the summer we have been successful in being granted £2000 from the West Oxfordshire District Council Community Wellbeing fund. Many thanks to WODC. We are aware that the cost of living is still high and that utility bills will soon be a problem again for many of the households that we support. Last year we were able to help seven households with the cost of their electricity and gas bills during the winter months, as well as inviting all to attend our warm space events.

We are grateful to anyone who can support us - with encouragement, help and financial donations.

Many thanks to everyone who continues to help by visiting Cornerstone and financially supporting us. Thank you to our amazing volunteer team!

For more details including details on how to donate please go to www.charlburychurch.co.uk/cornerstone

If you would like to join our mailing list please email cornerstone@charlburychurch.uk or use the link on the webpage above.

Jo Paton

Charlbury Church Services



Charlbury Baptist Church, Dyer's Hill

Contact: Secretary (01608 810107)

Sundays 10.30am.

Communion on the first Sunday of each month

Tuesdays at 7.30pm Join us on zoom for midweek study/discussion

Our Garden. A place to sit quietly at any time.

charlburybaptistchurch@gmail.com

www.facebook.com/dyershill/

Join us on Friday 15th December for a Christmas Carol Sing-a-long in a warm space with festive refreshments



St Mary's C of E Church, Church Street

St Mary's Church, Charlbury and All Saints Shorthampton

Full details of all church services are available in the

Leaflet or in the Church porch

Parish Office (01608 810230)

www.stmaryscharlbury.co.uk



Friends' Meeting House, Market Street

Meeting for Worship at the Friends Meeting House

Sunday mornings 10.30am

For further details contact Sue Terry (01608 811033)

email: sueeterry@btinternet.com)

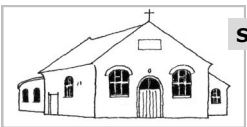
You are very welcome to join us



Methodist Chapel, Fishers Lane

Sunday services at 10.30am

Further information from Gill Grason (01608 810154)



St Teresa's R.C. Church, Fishers Lane

Wednesday Mass: 9.15 am (followed by Adoration/ Benediction) except in Lent when Stations of the Cross)

Friday Mass: 9.15 am

Sunday: 9.15 am Parish Mass.

Priest. Fr Clive Dytor, The Old Drapery, Church Street, Charlbury. Tel: 07484 158642.

Churches Together in Charlbury

In October we held our annual meeting in St Mary's parish church, preceded by a united service led by the Quakers. Seated in a large circle in the style of a Quaker meeting, we reflected on inequality in the world in readings, prayers and a period of silence. The war between Hamas and Israel and the suffering of people in Gaza, Israel and the occupied West Bank were very much on our mind. After the service we collected £250 for UNICEF.

Afterwards at the annual meeting we had a delightful talk by Alison Butler, an archivist from the Methodist Church. She had been visiting Charlbury in connection with the Charlbury Methodist Church 200th anniversary which was being celebrated the next weekend. She gave us fascinating insights into the detective work an archivist engages in when trying to recover the history of churches and their community.

She pleaded with us to keep records, giving us examples of objects and photographs that can no longer be identified with certainty. She showed us how fallible memories can be after only a few years.

Looking forward we will again be supporting the Porch in Oxford through our Reverse Advent Calendar, collecting useful items of food, toiletries, detergent and underwear for the homeless and vulnerable people who come to the day centre for meals, laundry, showers and a safe place to rest. And we will be sending you a Christmas card with the Leaflet, featuring a nativity scene designed by members of the local Methodist Church and giving details of Christmas services, to which everyone is welcome.

In January we will be welcoming the Revd. Fergus Butler-Gallie as the new vicar of Charlbury. He has kindly agreed that on January 21st, the first Sunday after his induction, the Parish Communion service in St Mary's will be a

united service to which all the Charlbury churches are invited. This is the Sunday in the middle of the week of prayer for Christian unity, observed across the world from January 18th to 25th, so an ideal time to meet together for worship and to greet Fergus.

By the time the next issue of the Chronicle comes out in March, Lent will already have started and Churches Together will be offering Lent lunches on Fridays and Lent talks on Monday evenings in the Friends Meeting House. The theme of the talks is 'Why are you doing this?', with local speakers who are involved in voluntary action to tackle some of the world's social and environmental problems.

They will be explaining what they are involved in and their motivation for giving their time and resources to these causes. Details of talks and lunches will be on the Charlbury.info website and in the February Leaflet.

There is always something we can do to make the world a kinder, friendlier place. We can share our resources. Churches Together in Charlbury has raised £4047 for Christian Aid this year, to help people in poorer countries adapt to climate change, and has made donations to the local charities we heard about in the 2023 Lent talks. We can share our time and interests. Cornerstone, the Community Centre, the library, the Corner House and Memorial Hall, All Together in Charlbury, CRAG and a wide variety of clubs and societies only exist because volunteers give their time and energy to making things happen.

Getting involved in our community helps counteract the helplessness we often feel when think about the state of the world. We can all do some good for other people and that does us good.

*Rosalind Scott
Secretary to Churches Together in
Charlbury*

Expedition to Kyrgyzstan

It's been almost two months since I got back from my expedition to Kyrgyzstan in the summer, and looking back on my time there is starting to feel a bit surreal. In July, I was flying into Bishkek, with no idea, no expectations, and quite a lot of apprehension for what the next 5 weeks would hold. Reflecting in October, I can confidently say this mindset served me well, as the experience proved more demanding and fulfilling than I could have imagined.

After a gruelling 36 hours of travelling we reached the southern mountainous At-Bashy region, where we would be spending the next five weeks. My team of seven other young explorers and two leaders left basecamp after three days of acclimatisation and training and we'd only come through base camp once more in the expedition, when heading east to the At-Bashy mountain range from the Naryn-Too range at the three and a half week mark.

Amidst the physical and emotional challenges of hiking everyday at altitude, living in a 4-man tent with no personal-space, and having no contact with the outside world, the expedition had its share of rewarding moments, from conquering a 4159m peak to sharing meals with kind locals in their yurts.

The lessons that I have learnt from the hardships and the life I got to experience in Kyrgyzstan made it a profoundly fulfilling and unforgettable journey. This

expedition was not only about exploring a completely new environment and culture, but also about learning to adapt and be prepared for whatever challenges a day might throw at me; something I hope I never forget.

Some of the most memorable moments (good and bad!) from the expedition:

- Our whole team waking up at 1am while camping at 3700m to lie in our sleeping bags outside our tents to watch a meteor shower.
- Evacuating off a ridge with heavy packs due to a medical emergency, getting stuck on a steep shoulder, having to scramble down 200m in a hailstorm, then spending the following 2 hours in a storm shelter.
- Being invited to share a fresh, warm meal with a local family in their yurt after 4 weeks of rehydrated curry, porridge and crackers.

I want to express my gratitude to local sponsors, House & Carriage, Shaw & Co, CQF, and especially GWP, whose support made this expedition possible. Also, a big thanks to the generous individuals who contributed to my fundraising independently; your support meant a lot!

Millie Chettleborough



Reverend Fergus Butler Gallie

Reverend Fergus Butler Gallie will be starting as the new vicar of Charlbury with Shorthampton on 17th January 2024. He'll be joining us on Christmas Eve at St Mary's Church and leading the 4pm and 6pm Carol services. Thirty-one years old Fergus grew up all over the country but with a family home by the Romney Marsh in Kent.

After university education at Oxford and Cambridge, he has served in churches in Liverpool and Central London as well as in chaplaincy at a school in Kent.

I'm looking forward to January. There—that's got your attention hasn't it? What kind of maniac, you are probably thinking, looks forward to *January*. It's surely our most miserable month: wet, grey, and long. Quite how it makes 31 days seem like 300 I don't know but it does.

If I'd have said I was looking forward to December you might have thought me saner. After all December has the consolation of Christmas. It has presents and good food and seeing family and general instances of good cheer.

Why do we do those things to mark Christmas? Well, they are at their root, expressions of what we value. At the heart of Christmas is the concept of God

valuing us, loving us so much that he becomes man. We call this the Incarnation and it is what makes Christianity both beautiful and scandalous.

Scandalous because God chooses a particular place at a particular time and chooses to make himself known not as a great and powerful figure but as a little baby. It is beautiful for exactly the same reasons.

Christmas means that each moment of our lives is hallowed, and each place we inhabit is too, because it is in place, in context, that holiness occurs. The incarnation makes every 'anywhere' a somewhere. It's as true in January or February or August as it is in December. It's this reason why I am looking forward to January, because it marks the month I arrive in Charlbury to be your vicar. The town will become a much loved and holy somewhere in my life as I know it already is in each of your lives.

I'm looking forward to seeing you in each of the smaller somewheres that make up the town: its pubs, shops, open spaces and, of course, its parish church. I promise it's going to be enormous fun.

Reverend Fergus Butler Gallie

Come to relax, unwind, read the papers, catch up with friends and colleagues and enjoy some delicious home-made cake along with a steaming cup of Fair Trade tea or coffee

Font Cafe

St. Mary's Church, Charlbury
10am to 12 noon every Thursday

For smaller children we provide a play area with toys. Free Wi-Fi available



Charlbury Town Council News

Contact: Lisa Wilkinson, Town Clerk at
charlburytownclerk@gmail.com or 07311 259412.
c/o Corner House, Market Street, Charlbury, OX7 3PN.
www.charlbury-tc.gov.uk

Meet the newest Town Councillor

At the August meeting, the Town Council co-opted David Green to its ranks, the vacancy triggered by the resignation in July of Dan Raymond-Barker. (Happily, Dan is still helping to run Charlbury Market as a member of the Food Group.)

There were several outstanding nominees and it was a tough choice. We are delighted to have David Green working with us. He is also redeveloping the Town Council's website and is already heavily involved in various projects promoting environmental sustainability and making Charlbury a better place to live.

David is a driving force behind attempts to get a local peer-to-peer car sharing scheme off the ground and is currently trying to persuade HiyaCar to make their car sharing system even more affordable for Charlbury residents. There are now three cars listed in Charlbury on www.hiyacar.co.uk.

Council elections in May 2024

If you like what this council is doing and you'd like to be a part of it (or if you feel that we should be doing something completely different!), there will be local

elections in May 2024 and all 12 seats on the Town Council will be up for re-election.

Charlbury Town Youth Council

Young people sometimes feel that they don't have a voice or that the town is not organised with their needs in mind.

To make Charlbury an even better place for teenagers, we are going to facilitate a Youth Council and will soon be recruiting a number of youths (14–18 years old) to a working group which will set up a Youth Council.

Charlbury Christmas market

Don't miss the special Christmas market 9.30am–12 midday on 16th December in the Memorial Hall.

This is a spin-off of Charlbury Market, the local food market held on Saturday mornings outside Charlbury Community Centre – the last regular market of the year market was on 14th October and will return again when the weather gets warmer next spring. Keep an eye on:

<https://charlbury-tc.gov.uk/charlbury-market/>.



Comforts – Energy efficiency and comfort in Charlbury’s homes

The Town Council’s Buildings Working Group has identified the ten most typical house-types in Charlbury and has commissioned a report which tells residents, according to their house type, how you can make your home more energy efficient, cheaper to run and more comfortable to be in. The ‘Home Comforts’ report tells you:

- The measures you can take and how much they cost.
- How much disruption they might cause.
- How much they will save on your energy bills.
- How much carbon you will save.

The measures range from cheaper easy wins to comprehensive whole-house projects. **Find your house type and more information at <https://charlbury-tc.gov.uk/buildings-team/>**. If you don’t have internet access, please contact the Town Clerk, Lisa Wilkinson, on 07311 259412.

Rising energy bills are a worry for us all. Meeting the UK’s climate change targets needs action on all fronts. Improving our homes and community buildings can help to reduce costs and reduce carbon emissions. Did you know that ...



- 60% of Oxfordshire’s homes have an EPC (Energy Performance Certificate) rating of D or lower, meaning that they are very inefficient.
- about a fifth of the UK’s greenhouse gas emissions come from homes, the vast majority from heating and cooking.

The Buildings Group is aiming to roll out energy efficiency solutions in Charlbury’s existing buildings and new developments by 2030, along with the installation of low-carbon heating technologies. To achieve this, we need to engage with Charlbury builders who will play a key role in delivering buildings that are warm in winter, cool in summer, and cost less to run. Are you a builder that wants to engage with the town council’s aims for better quality buildings? Contact Lisa Wilkinson on 07311 259412 or clerk@charlbury-tc.gov.uk

What financial help is available now? For homeowners and residents, there are substantial grants available for the replacement of gas boilers with associate pumps, biomass boilers or ground source heat pumps. There are also grants available for the improvement of the energy efficiency of homes. For more details and for further advice, have a look at our website <https://charlbury-tc.gov.uk/buildings-team/> (or if necessary, contact the Clerk).

News from the Land and Nature Group

By Mark Gregory

Meadow on the Mill Field

You may have noticed the grass on part of the Mill Field – Charlbury’s haven for recreation and walking the dog – looking a bit scraped and bashed recently, with little patches of exposed earth.



The land has been prepared for sowing with yellow rattle, an annual wildflower. It marked the first stage of a 2-year project to restore a half-acre area of the Mill Field to species-rich, floodplain meadow.

In time, the site should look pretty, with lots of wildflowers. More importantly, the project will increase biodiversity, along with providing a taste of how land along the river was traditionally managed as hay meadow over hundreds of years.

The project is being run by the Town Council’s Land and Nature Working Group (LNG). Thanks are due to Sustainable Charlbury for providing initial funding. The yellow rattle seeds came from Southill Solar, near Charlbury.

Volunteers in action on the Mill Field

Volunteers were out with spades and rakes preparing and then sowing the Mill Field site on Saturday

afternoons in October. Yellow rattle is important in recreating meadow because it slows the growth of usually vigorous grasses, creating space for other plants to get established. There will be plenty more work for volunteers to do in the summer when the next round of wildflower sowing is due.

Nature recovery

LNG members have also been working on a ‘Nature Recovery Plan’ for Charlbury and nearby parishes. The natural world is under threat in West Oxfordshire, as in other parts of Britain, from habitat loss and species decline. The proposed nature recovery plan is about creating a framework for addressing the biodiversity crisis in a systematic way in this locality.

To get things moving, one of our members, Geoff Griffiths, has produced a map of habitats in the parishes of Charlbury, Finstock and Fawler from a range of sources, including the Thames Valley Environmental Records Centre.

At the October group meeting of the LNG, there was a lively discussion about how valuable habitats identified on the map could potentially be expanded into adjacent areas.

Engaging with residents as well as landowners and farmers will be at the heart of creating a meaningful plan. If you’re interested, there will be opportunities to contribute in the New Year, and you can read all about the LNG’s activities at <https://charlbury-tc.gov.uk/land-and-nature-team/>.

Speeds

The Town Council is buying a second Speed Indicator Device (SID) that will display (and record) vehicle speeds on roads around the town. The evidence is that they do make a difference by persuading drivers to stick to the new limits.

We are grateful to our County Councillor Liz Leffman for funding this purchase via her Councillor Priority Fund.

Nine Acres resident Damien Lewington is the new Community Speedwatch co-ordinator in Charlbury. Community Speedwatch volunteers use Police-approved speed guns to monitor speeds.

Drivers breaking the speed limit receive a warning and then a fine for subsequent offences.

Community Speedwatch, which has been dormant for a few years, will be advertising for a new cohort of trained volunteers soon. Keep an eye on our social media channels and on the Charlbury forum for announcements.



Fallen leaves, snow and ice

At this time of year, fallen leaves can become slippery and cause a hazard, particularly to elderly and frail people. If you are able to clear leaves from pavements near your home that would be appreciated.

As winter approaches, ice and snow may also be a possible hazard. If this happens please try to clear your own "patch" and look out for vulnerable neighbours - thank you.

Permissive paths

Permissive paths through Nine Acres Recreation Ground and from the Cemetery extension to the bottom of Pound Hill (part of one of the Gateway Walk routes) will be closed all day on Thursday 4th January 2024 in accordance with recommended practice to ensure that the accesses retain their permissive status.

Similar closures of permissive paths through Wigwell will occur on the same day by order of the Wychwood Forest Trust.

Residents with gates opening onto to Oxpens Allotments, Nine Acres Recreation Ground and Wigwell are also reminded that these do not constitute a Right of Way.

The permissive path between Hundley Way and Banbury Hill Farm (and the Old Shed) will be closed on Monday 8th January 2024.

Cllr James Styring



Pop in for a warm welcome!

As it gets chillier and darker and we spend less time outdoors, remember that the Community Centre is here for you. A friendly, open and warm space to read, work, meet friends, have a hot chocolate or a home-made slice of cake, read a book to your little one, use the library computers, play a game of table tennis, do a gym session, play a game of Scrabble or just have a cuppa! Phew - there really is so much to do, and something for everyone.

Here's an update about what's been happening recently ...

Street Fair

We had a great time at our stall at this year's Street Fair. We encouraged passersby to have a go at Jason's rowing challenge - and for our younger community members, the all-new hula hoop challenge! Competition was fierce but fun, and competitors ranged from university rowers to people who had never tried rowing. It was great to see so many get into the spirit of getting fit and enjoying ourselves while doing so.

Coffee with a Cop

In September, one of Thames Valley's neighbourhood police officers, Chris Cochrane, held a coffee morning where everyone was invited to come along and speak about any local issues of concern or interest. We're grateful that they're engaging with Charlbury residents in this way and if there is appetite for more, they would be happy to come again - let us know!

First Aid courses

Also in September, the centre hosted an informative and hands-on CPR session where Russel Ingham demonstrated and trained attendees

of all ages in how to use a defibrillator, such as the ones currently installed at the Charlbury Surgery, Fiveways and St Mary's. Shortly after, together with the Town Council and the Charlbury Day Centre, we held a broader First Aid course, run by Oxfordshire First Aid. Both were well-attended, which is really heartening - of course the more people in our community trained and confident in how to act in an emergency, the better for all of us. Watch out for more sessions if you're interested.

Half term Art sessions and Kids' Runarounds

October half-term was a-buzz with children enjoying their time off school at the centre. Local parent Polly Blok held two Art sessions for children to get creative and we held a couple of Kids' Runarounds for children to get energetic. We'd welcome more creative sessions like Polly's, so if you have an idea, do get in touch.

And **we'll be holding lots more Runarounds over the Christmas holidays** so if you have younger primary or pre-school age children (or visitors!) bring them down - they have the whole Sports Hall to themselves to kick or bounce balls around, build and play in the soft play area or just run wild! Please check the website or come into the centre to find out dates and times.

Classes at the Centre

As always, we have a huge variety and number of sports and exercise sessions on offer at the Centre for people of all levels of fitness - do pop in and **pick up a What's On leaflet** to find out about all our classes, dates and times. They are open to adults of all ages unless



specified, and most welcome teenagers as well. All of the below would welcome new participants - why not try something new this new year?

Circuits classes

We offer several circuits classes in the mornings, evenings and at weekends. Circuits classes involve a great blend of cardio intervals, toning and weight training. **Jason’s Super Circuits** on Thursday evenings is a class for those who really want to challenge themselves, and **Sunday morning circuits** welcomes children 11+ to join in, and while also challenging, has a fun and relaxed weekend atmosphere. **Jess Lees holds an early morning HIIT Circuits class on Saturdays** for those who want to start their weekend off with a full-on revitalizing workout. Contact jess@thelongevityworkshop.co.uk to find out more.

Volleyball

A friendly and informal session, held on Wednesday evenings – even if you haven’t played for years, you’re very welcome to come down and check it out. Teens also welcome. Contact Steven for more info: stevenfairhurstjones@gmail.com or 07879 063934.

Youth Basketball

Our pick-up basketball session on Thursdays at 5pm is a really fun, casual and very welcoming place to be. Run by one of our younger Community Centre employees, Charlie Chadwick, and only £3, it offers all a chance to develop their skills and enjoy the game.

Although it is aimed specifically at secondary school-age participants, slightly younger and older participants have been seen on the court – please get in touch with

Charlie to find out more on 07535 641941.

Barre Fit

An ideal class for those wanting to improve flexibility and core stability, this is a fabulous and fun class set to music that incorporates principles of both ballet and Pilates, and really works those thighs and bums! No dance knowledge or tutus needed, come on down and try it out! Contact Michele for more info: michele@charlburypilates.com or 07817 890787.

... and here’s what’s coming up over the winter months.

Community Christmas Carol singing

Why not kick off the holidays with a great group carol sing around the giant Christmas tree, followed by mulled wine or soft drinks and mince pies in the warmth of the centre? This event, welcome to all and free of charge, is on **Friday the 15th December, from 7pm**. Jennie Grierson and her singers will lead the carols, (lyrics provided if needed!), and it really offers everyone a wonderful chance to be part of the Charlbury community at this special time. Please join us!

Charlbury Probus

Probus is a social club made up primarily of retired people who meet for regular lunches, to meet new friends and participate in various interesting activities. Early in the new year, **on 3rd January from 12.30-2, Probud will be holding a ‘Probus at Home’ session** at the community centre - an opportunity to meet current members and find out more. Come along!

New Art History Class!

Exciting news as local art historian



and author Juliet Heslewood is offering a series of informal classes starting in the new year. This series is on the theme of 'Women Artists' and will run for 6 weeks, on **Monday afternoons, 2.30-4pm**. Classes cost £10 each, come to one or come to all!

... and don't forget ...

The Community Centre is here for you. If your schedule doesn't allow you to sign up to a regular class, don't forget that you can always **book a court** or the whole Sports Hall to play whatever you like.

We've recently seen lots of families and groups of friends popping in for a game of badminton or pickleball – only £10 for a court, and a mere £6 for young people. All equipment provided.

Looking for a place to hold your **child's birthday party**? We hire out the Sports Hall and the TG Room for parties - a great place to gather.

Every Friday at 10.30 is **TG's Café Coffee Club**, a place for retired people to meet and catch up, free to attend and a very reasonable price for a cup of tea or coffee. We are also re-starting **Scrabble sessions** on Mondays at 2pm, all welcome!

And every Friday evening during term-time, 7-9 pm, we hold **Youth Club**, a place for young people of secondary school-age to meet and catch up! It only costs a pound, and the whole Sports Hall is available to play whatever you want - or just hang out with your friends after the school week is done.

We need parent volunteers to make this happen, and we would be extremely

grateful for a new leader – a paid position - so please get in touch if you think you could help.

And every day of the week, we are open for everyone to come in, sit down and have a pot of tea and a delicious home-baked cake or savoury bake.

Special thanks must be made to Mizue Tams, Agnieska Henry and Emily Dytor for their amazing commitment to baking our wonderful offerings, week-in, week-out, alongside their other commitments, and for a very reasonable charge. It is contributions like this that make our community the great place it is.

Our Holiday hours

25th-26th December: closed
27th-31st December : 10-4pm
1st January: closed

Please check with class instructors or our website for updates on individual session holiday dates and time.

Get in touch!

Please get in touch with our manager Daniela Jenkins if you have any queries, you'd like to be involved, or to explore possibilities of a new class or event:
info@charburycommunitycentre.org.uk.

For information about any of our sports sessions, exercise classes, weekly social meetings and to keep up-to-date, please visit our website:
www.charburycommunitycentre.org

You can also follow us on Facebook:
[@Charlburycommunitycentre](https://www.facebook.com/Charlburycommunitycentre) or
Instagram: [charlbury.community.centre](https://www.instagram.com/charlbury.community.centre)

*Catherine Ball, Trustee
The Thomas Gifford Trust*



Beer Festival

Sipping for a Cause: Charlbury Beer Festival Gives Back In the rear-view mirror, we can now toast to the success of Charlbury's annual beer festival. This year's event was not just a celebration of real ales, local flavours, and music but also a testament to the community's generosity.

The festival raised a glass for charity, with all profits going to support local causes and organisations.

The heart of Charlbury Beer Festival lies in its commitment to give back. The committee, breweries, volunteers, and festival-goers have joined forces to make a difference.

The event originates as a fundraiser for the primary school. 25+ years later, 100% of the festival's profits are still channelled into supporting various local charities and non-profit organisations, making a significant impact in the community.

Thanks to the festival's success, several local groups and initiatives have received much-needed financial support. 2023 profits topped £25,000. Some of this is immediately distributed to groups like the Thomas Gifford Trust (Charlbury Community Centre) and CRAG, who take home what they make on the

day running stalls on our behalf. The remaining £19,500 was made available as grants via applications.

In November, the committee sat down and deliberated over the 20+ applications received, totalling nearly £60,000, and made some incredibly tough decisions about where the proceeds would go. I'm always left in awe of the generous people around us who organise and volunteer for the amazing groups and causes around. Beneficiaries this year include: Charlbury Cricket Club, Charlbury Town Youth FC, Charlbury Primary School, Charlbury

Scout Group, Charlbury Wildlife Society, Charlbury Exhibition Foundation, Charlbury Girl Guides, Charlbury Community Workshop, Charlbury Baby and Toddler Group and Charlbury Pre-School.

Beyond our borders, we also gave a donation to the Linda Norgrove Foundation, who are currently helping to provide life changing operations for vulnerable girls in Kabul, Afghanistan.

The success of Charlbury Beer Festival goes far beyond the enjoyment of beers, ciders, wines, gin, Pimm's, culture, food, and live music.

It's a testament to the generosity and community spirit that defines our town. By raising a glass at the festival, attendees have not only had a great time but have also made a meaningful difference in the lives of those around us.

As we reminisce about the festival, we celebrate the shared accomplishments that came from enjoying a pint or two.

The festival's commitment to giving back has empowered local groups to continue their vital work and improve the lives of our neighbours. It's a reminder that even in small towns like ours, we can make a big impact when we come together for a common cause.

Cheers to the success of our beer festival and the bright future it helps maintain for our community!

If you'd like to join the team that organises the festival, please get in touch. There's all sorts to get involved with. Most of it isn't beer! Mick Donegan is our volunteering coordinator and can be reached at volunteering@charlburybeerfestival.org.

For other enquiries, please email info@charlburybeerfestival.org

Gill Begnor

From County & District Councillor Liz Leffman

01608 810153, 07741 073088 liz.leffman@oxfordshire.gov.uk

For the past two and a half years, the administration at Oxfordshire County Council has been an alliance between the Lib Dems, Green Party and Labour. However, at the end of September that changed, when the Labour group at the County Council decided to terminate the Alliance.

This followed a very poor report from Ofsted on the Council's services for children with special educational needs and disabilities and demands from parents for the Cabinet member for Children's Services, who is also the Labour group leader, to resign. Sadly, the Labour Group decided that they preferred to end the Alliance rather than re-shuffle Cabinet roles. The new administration is an alliance between the Lib Dems and the Green party.

This gives us an opportunity to review our priorities as we work on the budget for the next year and beyond. We know that we have to significantly improve our children's services, but we also have to make savings as, like all councils, we have to cope with increased costs and demand for our services. We have to improve our roads, even though we are unlikely to get any more money from government to do this. How we do this over the eighteen months is the challenge that we face.

Locally, I am very pleased to say that I have now got the road from Fiveways to the North Lodge at Cornbury onto the schedule for repair in the next cycle. If you want to find out what is scheduled for repair you can use this link: https://oxfordshire.highway-iams.uk/Live/PBLC_ANON/PIP/?cg=scheme. Once on this page, click on the box next to Location Search, and tick the box for Schemes 2024-25.

The Town Council is working with the County Council to build a new zebra crossing on The Slade. Work will start in February 2024. This will require The

Slade to be closed and buses to be diverted. Liz is currently in conversation with officers to work out how best to organise this, as the diversion proposed by the contractors would mean a huge diversion through Enstone. This would seriously inconvenience anyone using the X9 or the S3. I am hoping that a solution can be found by temporarily allowing buses to travel both ways through the town centre while the work is being done, but that has not yet been agreed. The new Zebra will make crossing The Slade much safer and will also be a traffic calming measure close to the primary school.

And just to remind everyone that since the X9 has been taken over by the Oxford Bus Company, you can now take advantage of the £2 bus fare, making it an inexpensive and convenient way to travel to Chipping Norton or Witney.

I would like to wish everyone in Charlbury a merry Christmas, and a happy and prosperous New Year.

Email: liz.leffman@oxfordshire.gov.uk

CHARLBURY MEALS ON WHEELS

Meals on Wheels prepares and delivers meals at lunchtime on Tuesdays to elderly and disabled people in Charlbury and Stonesfield. Meals now cost £4 delivered.

We are now accepting new recipients.

Please ring Susan Merry on 07979 840438 or email susanmerry2@gmail.com.

We also urgently need an additional cook to join the team on a monthly rota. If you are able to help please contact Susan in the first place.



CHARLBURY'S DOG BAKERY & PET SHOP

We want the best for our pets, so inspired by our 3 girls, we started Camtali's in 2022, providing handmade vegan dog treats full of delicious goodness. We also make our own enrichment games like Snuffle Mats & Hemp Rope Dog Toys for you and your dogs to enjoy and play together.

Partnering with select companies like JR Pet Products, we have a range of Meat and Fish Dog Treats & Chews, Dog Toys, Enrichment Games & other Supplies too.

We are also VERY excited to announce our new Partnership with Essential Foods - a company producing high quality dog & cat food with one mission - to improve and prolong dogs' lives.

To find out more or visit us at the Bakery (by appointment only), contact Nikki on 01608 690240 or email woof@camtalis.co.uk to chat through your requirements.



camtalis.co.uk



CamtalisUK

Fully registered. Feed Hygiene Reg.: GB267 0424

Fitness 4 Seniors

FALLS PREVENTION BY LOUISE BARNES



Strength, Stability, Flexibility
Evidenced-based Falls Management Programme (FaME)
Build balance confidence and strength for your everyday activities

Charlbury Community Centre

Tuesdays 3.00pm (1hr)

Also on Mondays 10.00 am (1hr) – The AM Hall, Middle Barton

1st class £4 with this voucher

£6 per class. Book your place:

07879 685579 | louisebarnespt@gmail.com



Louise Barnes FCIMSPA, Senior Activity and Health Practitioner, Personal Trainer, The Chartered Institute for the Management of Sports and Physical Activity.



Free Delivery

within 10 miles of Long Harborough

☎01993 880 500 ✉info@bowards.co.uk

GET RID REMOVALS

Small local company specialising in:

- Full/part house moves: local & long distance
- All types of removals: local & long distance
- All types of clearance: house, office, garden, loft and shed
- Removal and recycling of any unwanted items: furniture, bric-a-brac, books, white goods.
- Removal of single items upwards
- Light Haulage



07538 244 861

hello@getridremovals.com

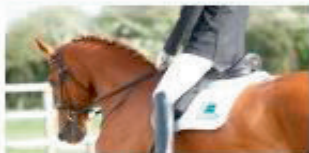
www.getridremovals.com

HN VG

Hook Norton
Veterinary Group

CARING FOR YOUR PETS, HORSES & LIVESTOCK
24-HOURS A DAY, 365 DAYS A YEAR

CHARLBURY: 01608 730085
HOOK NORTON HOSPITAL: 01608 730501



An independent practice established over 40 years ago, HNVG has a passionate team, dedicated to providing professional veterinary care of the highest quality for your pet, equine and farm animals.

Charlbury Branch Opening Hours:
Monday - Friday 8.00 am - 6.45 pm

Hook Norton Hospital Opening Hours:
Monday - Friday 8.00 am - 6.45 pm
Saturday 8.00 am - 2.00 pm

YOUR LOCAL, INDEPENDENT VETERINARY PRACTICE

HAPPY PLACE,
RESTORED

If you love your lawn,
you'll love GreenThumb.
Our year-round treatments
will give your grass the
TLC it deserves.



GreenThumb
LAWN TREATMENT SERVICE

Discover more at
greenthumb.co.uk



Scan here

Banbury branch - 01869 345333 banbury@greenthumb.co.uk



A reminder about why ATIC is here for local residents

All Together In Charlbury (ATIC) provides transport to appointments, whether these are medical appointments or simply visits to the hairdressers, to social or other activities in or out of the town, or to any other visits which are important to you.

We also want to provide friendly support of other kinds, such as an occasional chat or visit, if you are living on your own or if this would help you and your household in a small way with day to day living.

This includes occasional help with practical tasks around the house or garden.

ATIC volunteer normal "working hours" are Monday to Friday and up to 6.00 p.m. (early starts included, where appointment times require this)

We have volunteers who are keen to provide this kind of support, where and when family or friends are not available to help.

However, we realise that it is not always easy to decide to express interest in one or more of our services, if you feel that you - or someone you know - would benefit. But we are here, if you feel we can link up for mutual benefit.

We have a number of regular users of our service who recognise the value of our mission embodied in our title "All Together In Charlbury".

We all have been or will be in a position where would welcome some practical help or moral support but there is no family member or friend available to provide it. We hope that Charlbury is a

place where mutual support comes naturally. We can all help each other.

In return, our volunteers get the opportunity to meet people from parts of the town they may not have known or visited before and to have some fascinating conversations along the way. They learn a lot about our community.

To find out more about how we can help, please ring our call centre on ..

01993 776277

The phones are answered between 9.00 and 1.00 with an answerphone service at other times.

The friendly staff at Volunteer Link-Up, who help us deal with enquiries, will answer your call and we look forward to hearing from you.

If you know of someone, who you think could benefit from one or more of our services, encourage them to phone us - or, if this helps, speak to them first and then phone us on their behalf.

Meryl Smith

Enjoyable and Friendly Art Sessions in Stonesfield

**Drawing & painting in small
groups**

**For more information contact Gabriele:
gabrielekern31@gmail.com**



Cotswold Wardens

In the last edition of the Charlbury Chronicle I wrote about some short walking routes that had been created when Charlbury was designated a Gateway Town.

There are of course many excellent walking routes around the town to explore. If you are comfortable setting off with a map or a device with OS software, you'll soon find yourself into the wooded paths through the Ditchley Estate following the route of the Wychwood Way or if you follow the Oxfordshire Way eastwards you can enjoy the open farmland as you walk towards Stonesfield.

At one point the paths converge to take a route close to the River Evenlode as it winds its way along the broad valley.

If you prefer to have a tried and tested route look at the website

www.cotswoldsaonb.org.uk and you'll find a link to self-guided walks. The choice is not only in Charlbury but also the surrounding villages. These routes have been devised by the Cotswold Voluntary Wardens and are checked at regular intervals to make sure the walk instructions and the routes are all OK. How often have we picked up a book of guided walks and found out how out of date they quickly become!

With a team of wardens on regular work parties the footpath signs and condition of the paths can be kept in good order.

If you would like to find out more about volunteering to be a Cotswold Warden, you can find lots of examples about what we do on www.cotswoldsaonb.org.uk and also download an application form to become a Cotswold Voluntary Warden.

Rosemary Wilson



Charlbury Lunch Club

The Charlbury Lunch Club has branched out a bit recently – we had a trip to Bampton Garden Centre, where we had a delicious lunch and a browse round the beautiful Christmas displays.

In December we will be having another trip to the Chipping Norton Pantomime, which should be great fun.

We'll also be having a Christmas lunch to which all our volunteers are invited, making it a kind of thank you as well as a Christmas celebration.

Lunch club is held on Wednesdays 11.30am -2pm in the Garden Room of the Memorial Hall – we provide a delicious home cooked meal and some games or entertainment.

It is ably led by Kath Lucas supported by a large team of volunteers (though we could always use more, so please get in touch if you could offer a couple of hours a month – there's a free lunch as an incentive!).

We have recently lost a cook, so if you think you could cook a simple two course meal for about a dozen people once every five or six weeks, we'd be hugely grateful to hear from you.

There is space for a couple more members too, so if you or someone you know would enjoy a bit of company on a Wednesday, please contact me. Lifts can be provided if needed.

Tanya Stevenson, Chair of Committee (tel 07871 795748)



Charlbury Arts



Have you got a pebble in your pocket? Or maybe a stone at home which you have collected from a beach, a river bed or when out for a walk in the countryside?

Many of us enjoy the elemental feel of the materials around us in our natural environment. Sculptors use these materials to make interesting 3D shapes and spaces. When visiting an exhibition of sculpture made of stone, metal or wood, it is very tempting to touch as well as to look!

We have a number of sculptors in Charlbury and their work is regularly displayed in Artweeks, Charlbury Arts Exhibitions and Charlbury Festival. Walking around our town, my eye is often caught by sculptures in the windows of houses or in the public spaces, they add interest and character.

If you would like to have a go at sculpture, there are plenty of opportunities in Charlbury, either to learn as a beginner, revive past skills and to enjoy the process amongst friendly, like minded artists.

Patricia Freeman exhibits her sculptures regularly in Charlbury. Patricia and Kati Eidenbenz organise monthly sessions 'Drawing with Clay'. The group make life sized head sculptures in clay with guidance in some sessions from Jon Edgar who teaches regularly at West Dean College of Arts. In his teaching he uses both observed profiles and relationship of forms. The sessions are held in the ArtRoom in the Corner House in Charlbury and Patricia fires the artworks.

For more information, contact Patricia at patricia.freeman5@gmail.com or Kati at ke@katiandgraham.com

Emma Maiden is a local Sculptor who

exhibits in Artweeks and at local galleries. The provenance of stone is important to her and she 'thinks in stone' rather than aiming to reproduce a form. Emma runs local workshops of rolling twelve week cycles, offering help with ideas and design and guidance on an individual basis.

She would welcome beginners or established sculptors at her small group sessions when there are spaces. Emma's work can be seen on her website emmamaiden.com and for details of her workshops, contact emmamaiden1@gmail.com

Catherine Binnie is well known to many people in Charlbury through her own work exhibited in Artweeks and from her stone carving workshops. Catherine is based at Railway Studios, Forest Road, Charlbury and with over thirty years experience in running workshops, she guides small, friendly groups to produce individual sculptures.

Catherine provides tools and protective clothing, she has suitable stone or you can bring your own. Charlbury is dotted with sculptures that artists are proud to have produced in her workshops!

Further information can be found at her website, catherinebinnieartist.com

Charlbury Arts has two exhibitions each year, in the Spring and the Autumn. We are very keen to exhibit 3D art as well as the pictures, printworks and photographs produced by our members. If you discover your talent in sculpture, please do submit your work to our next exhibition!

Joanna Shakir for Charlbury Arts.
joanna@shakir.org.uk
07889 545408



Charlbury Green Hub

Never remove more than 30% leaf-bearing structure in a single year, otherwise it will stimulate a forest of vertical water shoots that are an even harder problem to deal with.

- Study the apple tree - where is south? where are competing trees?
- Prune neighbouring trees to give apple trees enough light.
- Aim for an open goblet shape but plan how to achieve this over say 3 years.
- Recognise fat fruit buds and short fruit-bearing spurs, compare these with narrow leaf buds on new growth that will turn into fruit buds as the twig matures.
- Remove dead wood.

How to prune an apple tree

- Remove vertical branches, particularly from the centre of the tree.
- Remove branches growing towards the centre of the tree.
- Remove competing branches, allow branches to have their own space.
- Cut branches immediately above the wrinkled collar of bark on parent branch.
- Reduce new growth to 3 leaf buds.
- The resulting tree should look more open, less congested and still have lots of fruit buds ready to bear fruit next year.

Christine Elliott
cropshare@charlburygreenhub.org.uk



- Kiln Dried logs
- Seasoned logs
- Stacking Service
- Barrow Bags
- Bulk Bags
- Log Nets
- Kindling Nets

Order Online:
www.jagtimber.co.uk
Tel: 01993 868001



PETER SMITH & SON

FUNERAL DIRECTORS LTD

Independent Funeral Directors with family values

• Pre-paid funeral plans

• Funeral Planner of the Year 2018 - Regional Winner

• Funeral Planner of the Year 2020 - South Midlands Runner-up

• All types of memorial work including restoration and renovation

• Personal 24 hour service

Directors: Peter Smith and Sean Smith

• 135 Burwell Drive, Witney OX28 5LP

• 01993 702000

www.petersmithandson.co.uk



Golden Charter
Funeral Plans





Charlbury Green Hub

Why hedges are important to wildlife

Wildlife need somewhere to feed, to breed, and to hide, and hedgerows provide all three.

The ancient hedges around Charlbury are not just hawthorn, but a mix of species flowering at different times, providing food over many months. Flowers provide pollen, nectar, berries, nuts, and seeds, but young leaves are important too supplying food for aphids and caterpillars, which in turn feed other animals.

Hazel flowers as early as February, look for the tiny red female flowers and the dangly male catkins bearing pollen. Goat willow is 'pussey willow' covered in silvery buds that become catkins – a huge attraction for queen bumblebees feeding after fasting all winter in holes under hedges. The conspicuous white blossom we see next are the plums - wild plum, cherry plum and blackthorn, all flowering on bare branches. I

n April, hedgerows start to green up with hawthorn coming into leaf before their white or pink flowers develop in May; also buckthorn, crab apples and apple wildings growing from discarded apple cores. Flowering speeds up in June - pink dog rose, two viburnums (guelder rose and wayfaring tree), elder, dogwood, spindle and rowan, all providing a range of berries later in the year.

Into July, wild privet takes its turn and the all-important bramble with its open nectar-rich flowers before juicy blackberries develop. Autumn ivy flowers are important particularly for second brood eggs of holly blue butterflies - first brood eggs being laid on holly flowers in spring.

Resident birds, like blackbirds and long-tailed tits, start making nests in hedgerows as early as February, the intricate construction takes 2-3 weeks ready for egg-laying in March. Climate change is causing some birds to lay their eggs a month earlier than in the 1960s, but this can lead to failure being out of synch with the emergence of insects the

chicks need to feed on. Birds nesting in hedgerows are very vulnerable when hedges are cut, farmers are restricted by law to cut hedges only between November and February. Timing is tricky, winter-sown crops and bad weather restrict tractor access to the fields, but cutting too early means the all-important berries and nuts aren't available during late winter.

Hedge-cutting cycles of three or eight years will help the food supply, and even annual cutting can be OK if the incremental method is adopted where the cut is 4" (10cm) higher each year to allow flower buds to develop on 2 year old growth.

Hedgerow shrubs left uncut will readily become mature trees but then the all-important dense shrubbiness, essential for nesting birds, is lost. While maintained hedges survive for centuries – witness Charlbury's hedges – hedges grown into mature trees will relatively soon be lost. They CAN be rejuvenated by coppicing (cutting at ground level) producing new growth from the base, but this is a drastic huge job and needs to be done in phases.

An ideal hedge is dense at ground level with some shrubs grown up as trees – a single hawthorn tree can have the same amount of blossom as 350m of trimmed hawthorn hedge. Owls and birds of prey need high vantage points and even smaller birds such as yellowhammers need trees as song posts to enable them to nest successfully.

Ground vegetation is important, not only for mammals, but also for ground-nesting birds like willow warblers flying from Africa each summer to nest in grassy hollows alongside our hedges and very vulnerable to disturbance. Dead wood lying at the base of a hedge is also vital for the insects underpinning the whole web of life.

Christine Elliott

PELLMANS

Your Local Solicitors

- **Business and Employment Law**
Contracts, Legal Compliance
and Disputes

- **Property**
Residential, Commercial
and Agricultural

- **Wills, Probate and Trusts**
Tax Planning and Lasting
Powers of Attorney

01865 884400

www.pellmans.co.uk

1 Abbey Street, Eynsham, Oxford OX29 4TB
Home visits and evening appointments available

BLENHEIM TAXIS

Local/National Airport Transfers
Airport specialists
Complimentary Wi-Fi
Charlbury based

07773 000 444

www.blenheimtaxis.com
email: enquiries@blenheimtaxis.com
All major credit cards accepted
Corporate accounts welcomed

Scouts

1st Charlbury

By the time the Chronicle goes to press, we will have held our Open Afternoon, marking the official 90th anniversary of Charlbury Scout Group. We invited past and present members of the Group to attend, share memories and sample some traditional Scouting skills – and, importantly, to enjoy some delicious cakes!

Autumn activities for the sections include a swimming session, visit to Chippy pantomime, exploring other cultures, shelter building, County Patrol camping weekend and a Dragons Den !

As we look towards the Centenary in 2033, we continue to plan improvements to the Scout Hut, so that it will be a great venue for Scouting and Guiding association members, as well as other Charlbury organisations. Our archive shows that it is already 20 – 30 years since the last major work was completed, so it is time for us to start the next phase of refurbishment, with the help of the community's time, expertise and generosity.

We'd like to say how grateful we are to Andy Faulkner, a previous Scout Leader, for giving so generously of his time by starting the ceiling repairs earlier this year. There is much more we'd like to do, so please look out for more details on Charlbury Info in the coming year.

Cheryl Horsey
Group Scout Leader



Katrina Moss **Inner Peace Reiki**

Treatment in the comfort of your own home
Level 2 Reiki practitioner

Treatment and public liability insurance
Reiki complementary healing can be
beneficial in many ways
Gift vouchers available

Please contact me for a consultation

07824 357690

katrinamoss1979@icloud.com



**All Together In Charlbury –
a local helping hand**

If you need:

- Transport to appointments or activities/ visits
- Occasional household tasks/gardening
- Shopping
- Help with a form or letter or something else
- Someone to pop in for a chat

**Local ATIC volunteers are here to help
Call 01993 776277**



Mallams
1788

Thinking of selling your Jewellery?

Free confidential valuations on any piece(s) you are considering selling at auction.

Home visits also available

Enquiries: 01865 241358 or
oxford@mallams.co.uk
www.mallams.co.uk

Brian's Barber Shop

Formally Charlbury Barbers.

01608 810630

Senior citizens day every day!



Opening times:

Mon. closed. Tues. 9-1 2-5.30. Wed. 10-1 2-5.30. Thurs. 9-1 2-5.30 Fri. 9-1 2-5.30.
Sat. 8-1

DIRTY CARPETS, UPHOLSTERY, RUGS



Most carpets dry within the hour

Unbeatable results, removes almost all spots & stains call

GRIMEBUSTERS

01993 868924 01865 726983

www.grimebusters.co.uk

CHRONICLE ADVERTS

Advertise your business in the **Charlbury Chronicle** and reach over 1600 residences.

To place an advert please ring Graham Jowett on 01608 810666 or email:
adverts.chronicle@outlook.com



All aspects of roofing and guttering work undertaken

Slates • Tiles • Flat Roofs

Chimneys • Valleys • Leadwork

Moss Clearance

General Repointing

uPVC Fascias • Soffits • Gutters

Advice and estimates free

Freephone: Mobile:

0800 955 5063 07817 792194

CHARLBURY COMMUNITY DIRECTORY

Please note that it is the responsibility of each organisation listed in the Community Directory to notify any changes to the Editor

Artweeks - Maureen Sparling (07779 779121)

All Together In Charlbury (ATIC)

To request help (01993 776277). To contact management committee (07487 413892)

Baptist Church - Kay Colyer (01608 810107)

charlburybaptistchurch@gmail.com

Charlbury Amateur Dramatic Society (CADS)

Sue Haffenden, Secretary 01608 676642

charlbury.drama@gmail.com

www.charlbury-drama.com

Charlbury Art Society (CAS) Joanna Shakir

secretary@charlburyarts.co.uk

Charlbury Beer Festival - Michael Peake

info@charlburybeerfestival.org

www.charlburybeerfestival.org

Charlbury Beer & Wine Circle - Brian Murray

(01608 819091)

Charlbury Bowls Club - Ron Smith

secretary@charlburybowls.co.uk (07979 980321)

Charlbury Bridge Club— Secretary Monica

Wilkinson (01608 810560)

Charlbury Canoe Club - Hugh Belshaw

(01608 810130) hughandjoan@uwclub.net

Charlbury Chronicle - Susie Finch (07879

693733) editor.chronicle@outlook.com

Charlbury Community Centre—Daniela Jenkins

(01608 811878)

Charlbury Community Speedwatch

charlburycsw@gmail.com

Charlbury Community Workshop

www.charlburycommunityworkshop.co.uk

Charlbury Cricket Club - David Horne Vice

Chairman dw3horne@gmail.com

www.charlburycricketclub.co.uk

Charlbury Day Centre - Tanya Stevenson (07871

795748)

Charlbury & District Probus Club Tony Merry

tonyherry@gmail.com

Charlbury Green Hub - Christine Elliott

(01608 811057) www.charlburygreenhub.org.uk

Charlbury Garden Society

secretary@charlburygardensociety.org.uk

www.charlburygardensociety.org.uk

Charlbury Ladies Luncheon Club—Gill Grason

(01608 810154)

Charlbury Morris - Peter Smith (01608 811007)

peter@charlburymorris.org

www.charlburymorris.org

Charlbury Museum - Curator—

curator@charlburymuseum.org.uk

Charlbury Music Class - Peter Fry (01993

359189)

Charlbury Open Gardens - Catherine Goyder

csggardens@charlburystreetfair.org

Charlbury Pioneer Country/Western Club

(Ray & Margaret) (01993 831345)

Charlbury Pre-School—Emily Dytor

emilydytor@gmail.com (01608 811200)

Charlbury Royal British Legion - Nick Potter

(01608 810388)

Charlbury School -Head (01608 810354)

office@charlburyschool.org

Charlbury School Association -

charlburySA@outlook.com

Charlbury Scout Group - Cheryl Hornsby -

cheryl@redstonecomputers.co.uk

Charlbury Society - Chairman, Nikki Rycroft

n.rycroft@doctors.org.uk

Charlbury Street Fair - Chairman—John Dora

(01608 811328) jmdora@btinternet.com

Charlbury Tennis Club - Mark Jarman (01608

811692) charlburytennis@hotmail.co.uk

Charlbury Town Council—Lisa Wilkinson, clerk

(07311 259412) charlburytownclerk@gmail.com

Charlbury Town Football - Keith Claridge

(01608 810201 or 07870 426707)

Charlbury Town Youth Football Club - James

Ball (01608 810270) jolliecat@btinternet.com

Charlbury Town Walking Football

—John Munroe charlburytownwf@gmail.com

(07388 010496) www.charlburytownwfsc.co.uk/walking-football

Charlbury Wildlife Society

charlburywildlifesociety@gmail.com

Charlbury Women's Institute - President -

Heather Hill charlburywi@oxfordshirewi.co.uk

Corner House Community Bookshop—Neil

Pakenham-Walsh (01608 811899)

Corner House and Memorial Hall -Office (07826

056496)

Churches Together - Rosalind Scott, (01608

810562) rosalind.scott@hotmail.co.uk

Cotswolds Voluntary Wardens - Simon

Walker (01608 811414) simon.iets@btinternet.com

Dementia Friendly Charlbury— Meryl Smith

(01608 810192) charlburydf@gmail.com

Friends Meeting House: Sue Terry (01608

811033) email: sueeterry@btinternet.com)

Holiday Club

parishoffice@stmaryscharlbury.co.uk

Methodist Chapel - Sue Tokumine (01608

810366) suetok@hotmail.com

Mind in Chipping Norton (Mental Health

Support) (01608 645296)

Riverside Festival - Andy Pickard (01608

810635) admin@riversidefestival.charlbury.com

www.riversidefestival.charlbury.com

St Marys C of E Church vacant (01608

810230)

St Teresa's RC Church Fr Clive Dytor (07484

158642)

Sustainable Charlbury - Liz Reason (01608

811212)

The Bell Inn (01608 810278)

The Bull Inn (01608 810689)

Thomas Gifford Trust- Chris Potts (01608

811878) chris.potts@blakemorgan.co.uk

United Nations Association (West

Oxfordshire) - Neil Pakenham-Walsh (01608

811338)

Walkers are Welcome Tony Merry 07580

917584 tonyherry@gmail.com

Wychwayz Border Morris - Teresa Duester

(01608 810934)

www.charlbury.info - Richard Fairhurst



Charlbury's Police Community Support Officer

C9837 Wesley Smith

To speak to us about any concerns you may have:

call 101 if it's a non-emergency

or 999 in an emergency

www.thamesvalley.police.uk

also sign up for free crime alerts

www.thamesvalleyalert.co.uk

CHRONICLE ADVERTS

Advertise your business in the **Charlbury Chronicle** and reach over 1600 residences.

To place an advert please ring
Graham Jowett on 01608 810666 or
email:
advert.chronicle@outlook.com

MAILING LIST

We have a mailing list for people wishing to receive the *Charlbury Chronicle* who no longer live in the town. **Now £5.50 per four issues; £6 per four issues for overseas subscribers.** Large-print £2.50 for **each** copy. If you wish to be put on the mailing list, please contact Graham Jowett (address in right hand panel).

Please note that **ALL** cheques for advertising, mailing list or donations should be made payable to *The Charlbury Chronicle* and should be sent to The Treasurer, Graham Jowett, whose address is in the panel on the right.

CHARLBURY CHRONICLE CONTACTS

Editor: Susie Finch

tel: 07879 693733

e-mail: editor.chronicle@outlook.com

Assisted by:

Julia Caston: 01608 810240

Barbara Allison: 01608 811262
and others

Advertising & Mailing List:

Graham Jowett,

2 Lees Heights, Charlbury OX7 3EZ

tel: 01608 810666

gjowettchronicle@btinternet.com

advert.chronicle@outlook.com

Treasurer:

Jessica Youngson

treasurer.chronicle@outlook.com

Distribution:

Brian and Shelagh: 01608 819091

Robert Caston: 01608 810240

And thanks to Nikki Frankum for proof-reading this issue of the Chronicle.

The **Charlbury Chronicle** is produced and distributed free to every household in Charlbury. All those involved in its preparation, work on a voluntary basis.

The **Charlbury Chronicle** aims to be impartial and independent and cannot be held responsible for any of the views expressed in its pages.

The editor reserves the right to alter or adapt any articles submitted for publication although hoping to discuss any major changes with the authors first.

The **Charlbury Chronicle** acknowledges the support of our advertisers and individuals who generously contribute to its funds and hope that any reader using their services will mention the **Charlbury Chronicle**.

Printed by

KMS Litho Ltd, Hook Norton, OX15 5LS

01608 737 640

enquiries@kmslitho.co.uk

www.kmslitho.co.uk



Cokethorpe
SCHOOL



Exceptional Breadth | Individual Focus

cokethorpe.org



SHAW & Co.

Providing legal advice in London and Oxfordshire for 35 years

1 Church Street

Charlbury

Oxfordshire OX7 3PW

Telephone 01608 810100

andrew@shawandcompany.co.uk

Wills, Probate and Administration

Powers of Attorney

Executor & Trustee Services - Inheritance Tax Planning

Property - House and Flat Conveyancing

Commercial Leases and Landlord and Tenant matters

Commissioners for Oaths

"...probably the best and most approachable lawyers I have ever used....."

10 Market Place
Chipping Norton,
Oxon OX7 5NA
Tel: 01608 644808
Fax 01608 644809



1 Church Street
Charlbury
Oxon OX7 3PW
Tel: 01608 811146
Fax 01608 810050

22 The Parade
Oxford Road
Kidlington,
Oxford OX5 3DB

www.fairfaxandcompany.co.uk
charlbury@fairfaxandcompany.co.uk

15 High Street
Bloxham
Banbury
Oxon OX15 4LT

Free Valuations No Sale—No Fee
Specialist Lettings Department
Independent Mortgage Advice
Low Cost Buildings Insurance

Fairfax & Co. offer unbeatable value and expert property advice from professionals