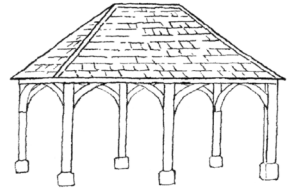


# Charlbury Chronicle



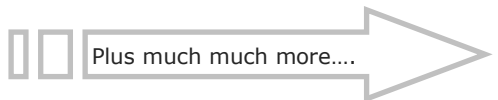
**Volume 25 Number 1**

**Summer 2021**

The Charlbury Chronicle is a free quarterly local community publication run by volunteers covering news and events for Charlbury and the surrounding area

## Inside this issue:

Changes afoot for the Corner House	3
Museum News	6
A Day's Life: Rachel Cooper	8
Beer Festival update	16
Coffee Break Page	19
Charlbury Church Services	28
Charlbury Community Speedwatch	39
Churchill at Ditchley	40
Charlbury Patient Participation Group	42
Charlbury Community Directory	47



### Contacts:-

Editor: editor.chronicle@outlook.com  
Advertising: gjowettchronicle@btinternet.com  
Distribution: brian\_murray\_guide@yahoo.co.uk

# Charlbury Garage

Hixet Wood, Charlbury, OX7 3SB

**01608 810898**

08:30 – 17:00 Monday to Friday

Attending to motorists' needs for over 40 years, we offer a local, friendly, helpful & trustworthy service

- MOT & Pre-MOT
- Tyres & Exhausts
- Servicing
- Batteries
- Aircon
- Bodywork

Competitive tyre prices

MOT £44

Half-price MOT with Full Service

Courtesy car available

Cars bought & sold



[www.charlburygarage.co.uk](http://www.charlburygarage.co.uk)  
[info@charlburygarage.co.uk](mailto:info@charlburygarage.co.uk)

---

## From the Editor

---

Well can we now breathe a sigh of relief that the worst, hopefully, of the pandemic is now over and that we will gradually be getting back to normal? Lets hope so!

Although it's a shame that some of the festivals will not go ahead, namely Cornbury and Riverside; the Beer Festival will go ahead but in September, along with Street Fair. Wilderness are also planning to continue this year although all the tickets have now been sold! And I have just heard that the Forest Fair is being held on 22nd August at Foxburrow Wood.

Just a reminder that the referendum for the Charlbury Neighbourhood Plan takes place on Thursday 10th June.

Congratulations to all the new Town Councillors—it was good to have such a wide field of candidates. The full results can be found on page 30 in the Town Council report. Congratulations to Liz Leffman for winning the

County Council and District council elections.

The roll out of the vaccination program is now well established and as we move down the age range will hopefully continue to support our return to normality.

Many clubs and societies are now opening up—the library is now open—and the Community Centre.

Like many of us I am looking forward to a staycation this year and aim to explore new parts of the UK.

With hopefully more sunshine on the way we can all look forward to a better summer with less restrictions placed on us all.

If you have any ideas on what else you would like to see in the Chronicle, please do contact me at:-

*editor.chronicle@outlook.com*

*Susanna Finch*

**Please note the deadline for articles for the Autumn issue is 1st August 2021  
Please send all articles to *editor.chronicle@outlook.com***

## The History of Charlbury through the gift of a 17C lady

On the 7<sup>th</sup> January 1631 James Walker, yeoman of Charlbury wrote his will. It was much concerned with his wife, Anne, and their as yet unborn first child, and how they would be provided for. He and Anne Eyans had married in 1629.

Sadly James died shortly after he made the will—the Charlbury Parish Records (CPR) record his burial on the 18<sup>th</sup> February 1631. Two months later there is another entry recording the baptism of his daughter Anne on 17<sup>th</sup> April.

Very little is known about their daughter Anne after her baptism. Her mother married William Pitchford, a London haberdasher, in 1640. Pitchford is thought to have been Master of the Guild of Haberdashers at some stage.

He had premises in Cheapside, and later lived in Hampstead. It would be a natural assumption that 9 year old Anne moved to London with her mother.

Her grandfathers, Edward Walker of Ratley, Warwickshire and Richard Eyans of Charlbury, both left her £5 in their wills of 1640 and 1653.

Also, in the will of her stepfather William Pitchford in 1659..... *I give my wife's daughter Anne Walker 20\* nobles for mourning and £10.*

On 20<sup>th</sup> March 1660 Anne wrote her will. There is no record of her death but probate was granted in 1667 for Anne Walker spinster of London.

She says "*Charlbury is Greate and full of poore Inhabitants who by reason of their greate poverty are not able to maintaine and educate their Children at school*".

So she settled her lands at Shotteswell, Warwickshire and Cropedy, Oxfordshire, left her by her father, on Brasenose College Oxford, to oversee a school in

Charlbury and appoint a schoolmaster, to be paid £40 a year.

Brasenose were also to provide a grant of £5 a year to two students, preferably from Charlbury, whilst at Brasenose. She wished her mother and uncle, another Richard Eyans, to ensure the renovation of the school.

In 1675 the free school for boys, with accommodation for the schoolmaster, opened in what is now the Manor House and Sunnyside in Church Street.

In later years with the building more dilapidated, Brasenose built new schoolrooms at what became Grammar School Hill. The Grammar School was open by 1837.

It eventually closed in 1902 and by 1911 the Charlbury Exhibition Foundation was formed. A legacy from (uncle) Richard Eyans, a piece of land in Charlbury known as Poor Boys Close, was included in the Foundation which still awards grants to Charlbury's young people in apprenticeship schemes and in tertiary education.

So the legacy of a lady, born in Charlbury in 1631, who lived through the English Civil War, the Commonwealth, Restoration of Charles the second, the Great Plague and possibly the Great Fire of London continues to provide some educational needs today.

\* A noble was a coin introduced under Edward III, originally worth 6s 8d. Mentioned in various Shakespeare's plays, they had gone out of use long before 1659.

*Judy Dod*



## Changes afoot for the Corner House and Memorial Hall

The Memorial Hall is having a significant visual facelift. The inside has already received a new look with brighter walls and doors. We've also insulated the entrance wall, reducing the building's carbon impact. That wall was previously a single layer of painted breezeblocks but is now a smooth surface looking altogether better than ever before.

Still to come is a new look for the outside facia as seen from Browns Lane, and that includes a new colour scheme for the porch, main door, walls and windows. The work will also incorporate even more insulation of the main wall.

There is to be improved and more efficient lighting in the Garden Room.

The Garden Society have proposed a community garden border to run along the garden side of the Browns Lane wall, and there is hope everyone should be able to enjoy that space.

Also coming are profound changes in the organisation structure of the Corner House and Memorial Hall.

The buildings have been in the care of a charity of trustees nominated by some of the regular users. That is to change into a Charitable Incorporated Organization (CIO), which will remain a charity but with a more modern limited company format. The trustees of the CIO are from the town at large so to bring a wider involvement of the whole community into the future of the much-loved buildings.

We appealed in these pages of the Chronicle for interested people to be part of the initial body of trustees, and from that invitation has come the founding group. Going forward, each trustee serves for a maximum of three years

(but can be re-elected), and future trustees will mostly be nominated by the principal community elected bodies that are legally responsible for the wellbeing of the town. That means nominations will come from the town council, the elected county and district councillors, and the elected PCC (not necessarily members of those entities).

The purpose of the charity remains mostly unchanged:

"To maintain the facilities for the provision of any services and activities that have the potential to improve life for the residents of Charlbury and the surrounding area, including meetings, lectures and classes, and recreation and leisure pursuits, and to undertake or permit to be undertaken any other charitable activity for community benefit as the trustees shall think appropriate."

In recent years, the Memorial Hall has been in more frequent use than available rooms in the Corner House. It is well understood that the interior of the Corner House needs rearrangement and upgrading – and that is one big challenge facing the new trustees.

The trustees will need a secretary, treasurer, and bookings organizer, because those responsible for those tasks in the old charity are making way for newcomers. We must thank Rebecca Gilmore, Susan Burne and Jackie Hague for the considerable contributions they have given over many years.

If you would like to help with any of these responsibilities, please contact me – we really need your help if this work is to go forward successfully.

*Roy Scott  
Chair  
roy@royscott.uk*



## News from Charlbury Library

By the time you read this Charlbury Library will have been open again for a few weeks. We've been lucky to have yet more Adults and Children's books bought new for us during the last lockdown and now we're finally able to have customers in to borrow them!

We've so many new books that finding space on our shelves has been a challenge recently, so please come in and do your bit to borrow books and make more space!

If you keep meaning to join the library but haven't yet, just pop in with some ID during our opening hours and fill out a very short form. It only takes a few minutes to join, it's free, and you can borrow and return from any Oxfordshire library, not just your local branch.

Alternatively, you can join online by visiting the Oxfordshire County Council website and searching for Libraries – Apply to Join the Library.

Oxfordshire Libraries has recently enhanced their digital offering and extended their Overdrive subscription to include eMagazines, accessible via the Libby app. There you will find over 3,000 titles from around the world to borrow for free, such as The Economist, Hello Magazine, Men's Health, National Geographic, Vogue, Time, BBC Good

Food plus many aimed at Teens and younger children.

Downloading the Libby app also gives you access to all of Oxfordshire's eBooks and eAudiobooks – you just need your library card number and PIN number to log in. Go to Oxfordshire County Council – Overdrive website for the full range of titles.

Although Charlbury Library is open rather limited hours at present, we are hoping that our pre-Covid longer opening hours will resume when it's safe to do so.

We will then be needing some extra volunteers to help run the library so if you think you might like to volunteer for a session, usually only once a month, then please pop into the library or give me a ring.

Alternatively, you can register your interest by visiting the Oxfordshire County Council – Libraries – Becoming a Community Library Volunteer. It's a lovely way to meet local people and you're likely to spot the best books first too!

*Julie Ward  
Charlbury Library Manager  
01608 811104*

### **CORNER HOUSE AND MEMORIAL HALL**

Office: 01608 810879  
Office hours: Mon 9.30am - 11.30am; Wed & Sat: 9am to 12 noon  
(closed first Saturday of every month)  
Emergency Contact:  
Roy Scott (01608 810562)



## Charlbury Scout Group

We are delighted to report that all sections are now meeting face-to-face in the Scout Hut again!

At the time of writing, we are operating under 'Amber' restrictions, which mean that we have limited numbers indoors and follow hand hygiene, social distancing and mask-wearing as appropriate for each age group.

Our young people have been excellent at helping each other to stay safe whilst still having fun and we are meeting outdoors as much as possible. During the rest of the summer, we hope to be able to return to our traditional outdoor activities, including camping.

Already, Scouts have been practising pitching our lightweight tents and cooking over open fires, as well as looking forward to water activities later in the term. Cubs are enjoying their favourite games, as well as pioneering, tracking and water catapults. Beavers started the term with a 'dragon trail', learning about safety & first aid and going on a mini hike.

West Oxfordshire's District Commissioner visited the group in April to present Commissioner's Commendation Awards. Joseph Goodwin, one of our Young Leaders, was recognised for his work on the dedicated Minecraft server initially developed for Charlbury Cubs, then shared with another Cub pack before going County-wide.

Anne Ogilvie has provided invaluable support to the Group as Section Assistant for Cubs and Scouts over the last four years, including helping to plan and run camps, geocaching and hiking activities.

We have waiting lists for all sections and need more adults to get involved with the group to help us offer Scouting to more young people in Charlbury and the surrounding area.

For all enquiries, please contact me on [cheryl@redstonecomputers.co.uk](mailto:cheryl@redstonecomputers.co.uk)

*Cheryl Horsey  
Group Scout Leader – 1<sup>st</sup> Charlbury*

### CHRONICLE ADVERTS

Advertise your business in the **Charlbury Chronicle** and reach over 1550 residences.

To place an advert please ring Graham Jowett on 01608 810666 or email: [gjowettchronicle@btinternet.com](mailto:gjowettchronicle@btinternet.com)

### CHARLBURY FARMERS' MARKET on the Playing Close between 9am and 1pm on Saturday, June 12th

Charlbury Farmers' Market is administered by Thames Valley Farmers' Market Co-operative Ltd. and organised by Geoff & Janet Burroughs.

Any queries, please contact Geoff or Janet on the contact details below.

Email: [burroughs871@btinternet.com](mailto:burroughs871@btinternet.com)  
tel: 07969 208518, 01608 810260



## Museum News

### Recent Acquisitions *Conserving Charlbury Heritage*

‘Museums are our nations memories’, words spoken by the broadcaster Melvyn Bragg discussing the importance of small museums in 2016 (Radio 4). Charlbury Museum’s diverse collection of artefacts and archives is infused with memories of the town. But intrinsic to the museum’s collection is that many items have a special resonance, revealing personal stories of Charlbury life.

During the last year the museum has been the fortunate recipient of a number of donations and bequests. It is always exciting for the museum to receive gifts which will enrich the collection.

In the summer of 2020, two watercolours by D. Houghton, an early 20<sup>th</sup> century artist, arrived. A legacy from Jill Edmonds, who grew up in Charlbury, she was the grand-daughter of Lawrie Milton, ironmonger, Church Street (1900s). The two paintings depict Walcot House and the Bell Hotel, the latter features the name Thomas Constable above the door, proprietor in the 1900s. His son Fred later ran the inn until the 1950s. The Constable name is well known to the museum’s researchers, as his daughter Nora’s WW1 nursing records are in the National Archives.

The history of Charlbury shops and trades always fascinate visitors to the museum, from shop signs, and ledgers to old beer bottles! The museum was pleased to receive the Evenlode Books shop sign from Jon Carpenter, plus some of his publications; the wooden sign, hand-carved and painted green hung outside his shop in Market Street (April 2000—January 2014). Enhancing the collection with objects of more recent history invigorates displays, ensuring the life of Charlbury is remembered for future generations. Jon’s sign now joins other shop signs, below the antique

‘Royal Oak’ (Church Street) - memories of Evenlode Books live on in Charlbury Museum.

Another memento of Charlbury shop keeping days was recently received from the family of Jennifer Bartlett (nee Price, 1935—2020). Jennifer’s grandfather and uncle were shoemakers; Henry Price senior commenced his business in 1879 at Myrtle Cottage, Church Street; his son Christopher opened a shop in Sheep Street with his wife Alma. The donation is a petite ceramic replica of C. C. Price’s shoe shop, made in 1984 by Tracey Fitzgerald, a student of Jennifer’s at the Mary Linwood School, Leicester. The Price shoe shop closed in 1981 after Alma’s death; Jennifer then continued the shop, assisted by her brother Alastair, until 1984. She lived at Providence House (next door), with husband Fred, and three sons. The model is displayed in the shoe-making cabinet, surrounded by the paraphernalia of the cobbler’s craft, items given by Jennifer who was a devoted supporter of the museum.

Acquisitions also arrive from nearby villages, Enid Edens of Sycamore Farm, Chadlington, had given numerous pieces to the museum, her family connections link to Sycamore House, The Playing Close. Following her death in 2020, her executors gave some personal photos, assorted almanacs and temperance leaflets to the collection.

The museum holds a large number of photographs and postcards, always popular with visitors to browse. A donation in March, from the estate of Margaret King given by her sons, has enriched the photo /postcard archives, for which we are most grateful. Margaret’s husband Stan was a collector of old Charlbury postcards. Amongst the pictures, postcards albums and photographs, two Christmas cards caught the eye of Janet Jeffs, while cataloguing this acquisition. The cards, dated 1903,



1913, were sent by Miss Pumphrey (author of 'Charlbury of Our Childhood'); one card shows her sketch of the Roman pavement, North Leigh, 1862. Caroline Westcombe Pumphrey lived at 'Hazeldean', (Enstone Road) with her uncle John Marshall Albright, who built the house.

Charlbury has always enjoyed celebrating the Street Fair, the museum holds a wonderful photographic record going back to 1955. Fancy Dress was certainly the dress code for such occasions, especially at the early Fairs. Browsing through Keith Claridge's gift of photos show how much his mother and uncle enjoyed getting dressed up for this event. Memorable images to be added to the 'Street Fair' albums.

Beyond the objects on display another dimension of the museum's work is cataloguing and conserving the vast collection of town records given over the years. The current acquisition from the Chamber of Commerce is now being studied by a committee member before being placed in specialist conservation boxes. A bulging, bursting at the rafters (!) attic store holds decades of records from nearly fifty Charlbury organisations. One day we hope to have more space to display, enabling visitors to view these unique archives.

In the 21<sup>st</sup> century, museum collections embrace the digital age. 2020 is a year forever etched in our memories, and 'Charlbury in Lock Down' was recorded via digital images for future reference. History is not just about past centuries; the museum recognises and records significant events each year in Charlbury.

It is with thanks to donations and loans from the townspeople over the years that the museum exists today for Charlbury and visitors to enjoy.

We look forward to welcoming you after June 21<sup>st</sup> to see the exhibits. The museum will follow Covid guidance for visitors. Look out for more details on the museum notice board and the Charlbury website.

*Sue Rangeley*



## **PROFESSIONAL ARBORICULTURE**

**ALL ASPECTS OF TREE  
SURGERY  
UNDERTAKEN**

**FULLY INSURED**

**FREE QUOTATIONS**

**(01993) 868001**  
**office@jagtrees.co.uk**  
**www.jagtrees.co.uk**



## **A Day's Life: Rachel Cooper, a Lockdown Volunteer with Stonesfield Owl rescue centre**

*This third lockdown has been especially hard for many people. Some though have found new ways to cope and things to do. Here is Rachel's story –how she found a new purpose when she was forced to close her salon for the duration of the lockdown, and began volunteering at Chrissie's Owls in Stonesfield.*

I had to close my salon in January due to the Covid restrictions. I am quite an active person and wasn't finding the restrictions easy, so my husband suggested I found something to do. I have always had a passion for animals, and knew Chrissie as she lives near my Mum in Stonesfield, and that she ran the Owl rescue centre. She needed help, especially as most of her volunteers were older people who needed to shield during the lockdowns, so I said I would come and give it a go helping her. I thought it would be so rewarding, helping her to do something for all these sick and injured birds.

When I first got there, Chrissie was putting the birds in the outdoor pens, and then she showed me round. She has a stable with indoor pens where the sick and injured birds are kept, and an outdoor area. The birds are brought in at night and put out in the daytime, unless they have not recovered enough from their injuries or sickness. My first job was to clean out the pens – I was like a chambermaid in an owl hotel –and put fresh pieces of carpet in the bottom of each one. The mess in the pens overnight you can imagine. We've all seen programmes on the TV where people look at owl pellets to see what the owls were eating. These include bits of their food they couldn't digest which they choked up, such as chick beaks and mice feet. So I had to clean this up.

Another job was to cut up squares of carpet to fit into the indoor pens. Chrissie gets donated old carpet –recently the

Duke of Marlborough pub on the A44 was being refurbished, and we were offered their old carpets. So we went and collected them and my job was to cut these up into the right sizes to fit the pens. I would also clean the floor of the stable using the Henry. Finley, an Ural owl, hated it, and made a loud clicking sound as I hoovered.

I gradually got more involved and began to do some more interesting work. During these months, it is the owls breeding season and a lot more of them are out and about. So they get hit by cars or tend to get stuck in chimneys. One tawny owl was found in a chimney in Lechlade and bought to Chrissie to be nursed. Often people will bring in these owls to the rescue centre, or if it happens nearby, Chrissie will go and collect it. This tawny owl we called Sooty –its feathers were black with soot, it had soot in its eyes and in its lungs. We washed it three times while it was with us, holding it in a towel and spritzing it with water – just a fine spray of water with no shampoo or other washing product. This is to protect the oil on its feathers. Sooty gradually made a recovery and went into an outdoor pen with another tawny owl we called Sweep. They were released together.

Chrissie is a trained falconer and has worked with birds of prey for years, so she is very knowledgeable. She can often diagnose what is wrong with a bird, especially if it is injured. If she feels it needs looking at, she can contact Gary the vet who will check her diagnosis and back her up if necessary. A barn owl recently found in a hedge was very lethargic and generally poorly, probably from eating a poisoned mouse. It was given vitamin K injections to stop the internal bleeding, put on a heat mat, and then as it recovered, we fed it very small chopped up bits of food using tweezers. Once it was sufficiently improved it was put into an outdoor aviary to try and fly, and eventually released. It is very important to release them back to the area they came from – unless they were found stuck in a chimney.

Chrissie has her own private collection of birds. You have to hold them correctly, because of their sharp claws, and I was very nervous of doing so. When I felt a bit braver, Chrissie gave me a glove and let me hold some of the tamer ones. I was scared I would hurt them, their legs seemed so fragile. I don't hold the wild ones very much at all. All the birds are real characters. Their hoots are different and I can recognise them now. There is a raven called Edgar who is very vocal and a mimic. His favourite word is 'Catch' which means 'dinner is coming'

One of her owls is a burrowing owl called Chilli. Every time I went to clean out the pens, he would hoot at me and chatter back at me as I talked to him. I fell in love with Chilli -he has really long legs, is really fast and energetic, and does remind me of me! Andrew and I have 'adopted' him and pay £40 a year to help with his food etc. My family were very enthusiastic about what I was doing at the centre and wanted to know what happened each day I went. There was never a dull moment.

I am back at work now since the restrictions were lifted in April, and am working six days a week to see to all my clients, who are desperate for their hair

to be cut etc. Once work has returned to more normal and I can have my Mondays off again, I want to carry on helping Chrissie at the centre. It has given me so much pleasure!

*Rachel Cooper was talking to Barbara Allison April 2021*

### **PS More help for the Owl rescue centre**

**Rachel** posted several times about the Owl rescue centre in Stonesfield on the Charlbury Forum on 2<sup>nd</sup> April this year, and thanked local people for their help.

**Maureen Sparling: local artist** - will be selling her new range of greetings cards this year in aid of Wildlife Trusts and the Owl centre.

She explained:  
"I adopted one of Chrissie's Owls for my granddaughter at Christmas and we went to visit her owl on her 3rd birthday earlier this month, when I also gave a further donation and offered to sell my cards to help the cause. I love owls and Chrissie is doing such a good job in rescuing and caring for them. She also added one of my owl paintings to her 'Friends of' Facebook page. I shall be painting some more owls soon"





## CHARLBURY Community Centre

### **A million thanks to all our volunteers!**

Since the start of the pandemic, Charlbury Community Centre staff and many volunteers have been supporting local residents, who have been shielding, and have helped with shopping, collecting prescriptions and have assisted in other ways if necessary.

By the time you read this article we will (hopefully) be well on the way to a return to normal ways of life and people will resume daily tasks with more confidence. Shielding had officially ended as of 31<sup>st</sup> March 2021.

We do realise however that some things might not be so easy for everyone, so the Community Centre will of course continue to try to help you set up the assistance you need if we can.

Please ring **01608 811878** and our staff will try to point you in the right direction.

You can also contact the **Cornerstone on 07510 772764** (between 10am and 1pm, Monday to Saturday) for the following services:

- Give & Take – Food exchange and ‘pop-up’ Foodbank.
- Advisory Service working with Citizens Advice
- Learning Café (Homework and Learning Support for young people)

We are immensely grateful to the large number of volunteers who have supported our community effort over the past year. It was heart-warming to see how many people were willing to help - at one point we were supporting about 100 households. It was the people of Charlbury helping the people of Charlbury.

## News from Charlbury Community Centre

### **Keep Charlbury Active**

The challenge we set was between us to walk, run and cycle the length of the coast of mainland Britain by the time the Community Centre re-opened on 12th April. That’s 11,120 miles! We covered an amazing 12,007 miles, so we achieved our target, plus a bit. In fact, 12,000 miles is half way round the world and would get us to Christchurch, New Zealand as the crow flies. Well done everybody, we were delighted by your response to this, and had no idea at the beginning whether this would be achievable. This has all been done since the beginning of this year.

What’s more, on the way we (or rather, you) picked up 150 bags of litter, weighing 476 kg!

### **Gradual re-opening of the Community Centre**

At the time of writing, we had re-opened the gym (by appointment only) and started up under-fives and other youth activities. Hopefully, by the time you read this and assuming nothing has happened to derail the government’s road plan, there will also be racket sports and some small classes happening in the sports hall. The café is due to re-open fully by 17<sup>th</sup> May and you will be able to sit indoors in groups of no more than six.

We plan to continue offering classes by Zoom, in some cases alongside live classes, so that people can choose which option they feel most confident with and so that we can keep the numbers down indoors, without turning people away.

### **Career Mentoring for 16-18 year olds**

Given the many challenges and uncertainties created over the past year, we have set up a young person’s career mentoring programme. One of the most important and valuable things in life is having advice from those around us. If



## CHARLBURY Community Centre

you ask successful people later in life about the 'secret' of their success, they will not point to a single event, but they will often point to a single person who took the time to talk to them and provide them with advice, support and encouragement when they most needed it.

We have a number of trained mentors who can provide advice and guidance to young people, between the ages of 16 and 18, who may be asking themselves some of the most important questions about their future studies and careers. A mentor will offer up to three 1-hour sessions to discuss career choices and provide advice. If you are interested and would like to be connected with a mentor, please contact Daniela at [info@charlburycommunitycentre.org.uk](mailto:info@charlburycommunitycentre.org.uk).

*Tanya Stevenson  
Charlbury Community Centre*

## Salon Copenhagen

3 Pendle Court, Pond Hill, Stonesfield OX29 8PZ

**Telephone (01993) 891101**

## Unisex Hairdressing

**Easy Free Parking**

*All aspects of hairdressing  
undertaken by our experienced  
professionally trained stylists*

**Ear Piercing also available**

**Open Tuesday to Saturday**

*Find us on Facebook*

## How will it be after the pandemic?

How will we all feel as the pandemic recedes? How confident will we feel about doing the things we took for granted before, as and when life returns to something resembling normal? Predicting the future is a risky game, but we can learn from the past: so the way people behaved following the flu pandemic of a century ago may be relevant here.

A few years ago I edited the holiday diaries of a jovial Brighton timber merchant named Henry Peerless, spanning the years 1891 to 1920. In July 1919 – just a month after the end of the third wave of the pandemic in the UK – Peerless and his travelling companions went on a motoring tour of England. And everywhere he noticed crowds of people – no mention of social distancing. In Newmarket, for instance, they ran into 'a hospital parade, an enormous crowd, banners etc.' The following day they drove to York, before going on to Harrogate ('crowds of people'), Bolton ('a number of children having a school treat') and the Lake District ('besieged by dozens of char-à-bancs'). In Lichfield, 'crowds of people were watching the putting up of decorations for tomorrow's Peace Celebrations', while in Coventry there were 'people like rabbits all over the road', also for the celebrations: 'Band of hobble-de-hoys are now parading, singing uproariously. The uproar goes on till about twelve o'clock.'

They passed through Woodstock and Oxford, and their final stop was just down the road from here, in Newbury – 'the whole place full to overflowing with people, small bonfires, fireworks galore, the town band playing, and hundreds of couples dancing in a space kept for them by the police. A noisy, rollicking, lively, exhilarating scene.'

Henry Peerless and his companions were clearly delighted to be back in the swing of life. Personally, I'm expecting to continue feeling nervous for a little while after lockdown eases – but let's hope that we too have something to celebrate.

*Edward Fenton*

Cotswold Corner



Maintenance

Tiling, Roofing, Bricklaying, Plumbing, Gardening, Joinery, Painting

Robert Marks

CotswoldCornerMaintenance@gmail.com

07973884232

GENERAL MAINTENANCE  
AND SMALL BUILDING  
WORKS

Patios, Cabinets, Garden Rooms, Insulation, Bathroom, Kitchen

Landscaping, Sheds, Cleaning, Fencing

Handyman, Decorating, Glazing, Lettering



OVER  
30  
YEARS  
EXPERIENCE

YOUR ROOF PROTECTS  
YOUR HOME

Roof Repairs – Problem Leaks to Roof  
Valley etc  
Gutter Problems – Renewal & Repair  
Valleys Renewed or Repointed  
Lead Work

Get the expert with  
30 years experience

Reliable & Polite  
Small Jobs Welcome  
Free Estimates

01993 868557  
07833 772080



Simon Rhodes  
Painter & Decorator

07919871523

simonarhodes@hotmail.co.uk

First Class Workmanship  
Interior & Exterior Works



---

## Charlbury Society

---

In February we welcomed Dr Janet Dickinson from Oxford's Department of Continuing Education, whose talk had been postponed from the April before.

Her interest in the nobility and Court in Elizabethan England shone through with our link to Sir Henry Lee and Marcus Geeraerts' Ditchley Portrait with Elizabeth's foot in Oxfordshire, and we were reminded of her courtiers through many magnificent other paintings of the 16th century.

At that point we had 135 members and including guests, an estimated 110 people at that talk.

In March Stephen Barker, a well known local speaker and heritage adviser, introduced us to some fascinating Oxfordshire characters from the First Civil War, as Oxford became the Royalist capital and the County was on the front line with Parliamentary Buckinghamshire.

Following that, in April, we had a detailed account of the story of the Ascott Martyrs from Carol Anderson, the Chair of the Educational Trust.

An exchange at a gate in a bean field in Ramsden between young farm labourers and a group of women with their children from Ascott led to the women's imprisonment, and we learnt of the impact this had on the lives of the agricultural labourer and his family in the late 19th Century.

Following our brief AGM, we are delighted that Dr Alice Prochaska has agreed to give her excellent talk on the struggle for women to be entitled to a proper university education at Oxford, as some of us have heard her before but many have told me how disappointed they were to have missed it last season.

None of this could have happened without Peter Bennett having guided me into the role as Chair, and the

tremendous support of our committee, each person taking responsibility for a specific area, so on your behalf I should like to thank them all for their contribution to the success of the Society over the past year.

Sadly Susan and Tony Merry are stepping down, having been on the committee for 5 years, and Susan's organisational and communication skills will be acutely missed.

So now some decisions to be made.

Would our 140 members still continue to support us if we returned to the Memorial Hall or would you prefer to continue by Zoom in the comfort and warmth of your home ?

And shall we be able to continue to bring you such an excellent programme next year with a considerably reduced committee ?

We really do need your support in this and whereas I know many of you support our community in many different ways and help to run societies yourselves, we appeal to those of you who perhaps may have just moved to Charlbury, or returned, to join us and help us continue the successful programme we want to organise for the following season.

*Nikki Rycroft  
Chairman*

**DIRTY CARPETS, UPHOLSTERY, RUGS**



**Most carpets dry within the hour**  
**Unbeatable results, removes almost all spots & stains**  
**call**  
**GRIMEBUSTERS**

**01993 868924 01865 726983**  
**[www.grimebusters.co.uk](http://www.grimebusters.co.uk)**



## Busy year ahead for Wigwell



As days lengthen and Covid restrictions are gradually eased, we are delighted to be able to get back to work again on Wigwell. We have restarted working parties (currently subject to social distancing and limited numbers) and we are looking forward to a busy and exciting year.

Priorities this year include monitoring of species on the reserve to build an up-to-date record of what is there, and making improvements to the permissive path through the site. We are also hoping to launch further initiatives, involving local volunteers, to improve habitats and biodiversity

To kick off the season, we had an excellent working party session on Wednesday 14<sup>th</sup> April which included a talk and discussion on butterfly monitoring from Roger Newman, a trustee of the Wychwood Project – thanks Roger (more on this below). Volunteers also worked to re-route a section of the permissive path away from the wetland area (more on this below too) and to pollard willows.

### **Building an up-to-date record of species on the site**

Accurate records are important to highlight the importance of the site for wildlife and to assess the impact of future measures to improve biodiversity and establish new habitats. To start building this record, two monitoring exercises have been set up by the Wychwood Project and are now operating with the support of volunteers from the Wigwell Friends and the Wychwood Project. Training is being provided to volunteers as necessary and to ensure consistent and appropriate recording.

### **Reptile Survey**

This survey has been set up by Neil Clennell from the Wychwood Project who is an experienced herpetologist. Neil is

providing training to volunteers who wish to help with the survey. If you are interested, please contact Miranda Davies at [miranda@wychwoodproject.org.uk](mailto:miranda@wychwoodproject.org.uk). Three reptile species have already been detected including Slow Worms and Grass Snakes and this survey will provide better information on their numbers and the locations within the reserve where they are most prevalent.

### **Butterfly Monitoring**

The Wychwood Project is working with the Butterfly Conservation charity to encourage monitoring of butterflies. Butterfly Conservation has produced specific identification charts for species to be found in the Wychwood Project area. A copy can be obtained from me (electronically or printed) by emailing me at [wigwell.friends@gmail.com](mailto:wigwell.friends@gmail.com) or calling me on 01608 811021. If you want to monitor butterfly sightings, we encourage you to use the free smartphone app *iRecord Butterfiles* produced by Butterfly Conservation. Their website <https://butterfly-conservation.org> gives more information on how to monitor and record sightings. The Wychwood Project will have access to sightings recorded this way within the project area. They will also be able to use records of sightings within Wigwell to build a base record for the site.

### **Improving the Permissive Footpath**

The permissive path through Wigwell is an important resource for local residents and volunteers. As well as providing access to the reserve, it offers tranquil country walks on the edge of the town. It also forms an important part of the newly established and popular Cotswold Gateway Route 2 circular walk between Charlbury and Banbury Hill.

Unfortunately, some parts of this path become very difficult in wet weather conditions so improvements (such as installation of some steps and boardwalk



## Busy year ahead for Wigwell (contd)

sections) are planned to make the path more accessible through the year. Initially, work has begun along the narrow spring-fed wetland section towards the eastern gate. Here, the path has been diverted up the slope away from the low-lying wet area, and stepping stones have been placed across the spring line. Large logs have been placed to make the new desire line path very clear. We aim to replace the stepping stones with a short bridge later this year. By re-routing this section of the path up the slope will be able to enhance the low-lying area, which is frequently wet and impassable, as a wetland habitat.

### Other initiatives

We also hope to be able to announce further exciting initiatives soon to involve members of the community. Trial installations of **Beaver Dam Analogues** along the stream perhaps? Of course, any such scheme will depend on the support of stakeholders and on the availability of funding. Discussions are ongoing – watch out for further announcements!

### **Wigwell and the Neighbourhood Plan**

Within the emerging **Charlbury Neighbourhood Plan**, Wigwell is designated as a Local Green Space, affording the site additional protection against future development (if/when the

plan is adopted) in recognition of its local importance to the community and for wildlife. The plan WILL be adopted if it is approved by Charlbury electors at a referendum to be held on **Thursday 10<sup>th</sup> June 2021**. **Please use your vote! Get Involved!**

Wigwell is an amazing resource for biodiversity and wildlife in Charlbury that is right on our doorstep and you can get involved with initiatives on the site. Come and join us as a **Wigwell Friend** (no fee, no obligations!) and we'll keep you informed about activities and events on Wigwell. Since the start of 2020, 15 new members have joined the group bringing our numbers up to 41 in addition to representatives from the Wychwood Project and Thames Water (the land owner). Many of these new members have already got involved with working parties – thank you!

To join or just to find out more, email me at [wigwell.friends@gmail.com](mailto:wigwell.friends@gmail.com) or call me on 01608 811021. I look forward to hearing from you very soon.

Finally, I would also like to say a big thank you to the Wychwood Project team (Neil, Toby, Miranda and the trustees) for all their work at Wigwell and elsewhere in the Wychwood Project Area.

*Peter Kenrick – Chair of the Wigwell Friends*

## CHRONICLE ADVERTS

Advertise your business in the **Charlbury Chronicle** and reach over 1550 residences.

To place an advert please ring Graham Jowett on 01608 810666 or email: [gjowettchronicle@btinternet.com](mailto:gjowettchronicle@btinternet.com)



### All Together In Charlbury – a local helping hand

#### If you need:

- Transport to appointments or activities/visits
- Occasional household tasks/gardening
- Shopping
- Help with a form or letter or something else
- Someone to pop in for a chat

**Local ATIC volunteers are here to help  
Call 01993 776277**



## Beer Festival update

The 23<sup>rd</sup> annual Charlbury Beer Festival will take place on **Saturday 4 September** at the Cricket Club from 12 noon to 10pm. We have decided our usual June slot is too close to the re-opening of events nationwide, but feel we all still deserve a special day's entertainment, especially as we cancelled last year's event.

On the day, we hope to be able to incorporate 50 real ales, a variety of craft beers, a range of ciders and perries, wine, gin, and Pimm's; a great selection of food; live music throughout; the Culture Club tent with its eclectic programme of performances and talks; children's entertainment; plus high-octane sport with the 10<sup>th</sup> World Aunt Sally Singles Championships. Naturally, this will all be subject to government guidelines and the state of the pandemic in early September. At the moment, things do seem promising.

As Charlbury is well aware, the Beer Festival raises money for community projects, both in our town and overseas. We have now taken our total of funds raised for good causes to well over £250,000. There have been donations to fifty local organisations, ranging from the primary school and pre-school, to local sports clubs, the Day Centre and Community Centre, and twelve overseas projects in Africa, India and South America.

For further details, please visit the Beer Festival website at:

<http://charlburybeerfestival.org/>

The Beer Festival has already been busy this year. Many *Chronicle* readers were in attendance at our virtual fundraising beer tasting held on 26 February. We were offered a guide to beer tasting from one of our American supporters, Kris Butler, and she brought along Yvan De Baets, a Brussels-based brewer. The pair of them

spent two hours keeping us entertained on Zoom, speaking to an audience that was primarily Charlbury-based, but also brought in people from Belgium, Denmark, Germany, Greece, Ireland and the United States.

Some of the after event comments made us realise this event had been successful:

"What a brilliant session & great boost to the CBF coffers. 60 people on, no drops during the session & fascinating insights"

"Really enjoyed Not Charlbury on Friday. I didn't log in to say what I was drinking, as it was milk in my cereal. Late lunchtime here in the Middle West. Thanks for putting on the show!"

"That was such a wonderful event. Really enjoyed listening to Kris and Yvan. Cheers! Proost!"

"That was really great - it flowed beautifully and everyone was so engaged. In the last year I've spent SO much time on Zoom, and that was almost certainly the one that was the most enjoyable"

"Everyone is so engaged. There is a beer geekiness that I'm really enjoying"

"Cracking session, well done"

And a final word from Yvan in Brussels: "I'm happy that the people had a good time! It has been an absolute pleasure to participate, and I hope it helped for the donations. Your [village] seems to be a little piece of paradise"

In total we raised just under £900 which has now been added to the Beer Festival coffers.

Here's hoping all continues to move in the right direction, and we enjoy a fantastic day on 4 September.

*Nick Millea*



## Beer Festival sponsorship

Charlbury Beer Festival is the largest fundraiser for the local area. In our best year we made £25,000 profit to distribute to good causes in the community. We're really looking forward to running the 2021 event on Saturday September 4<sup>th</sup> but realise it may not be possible to match the revenues from previous years.

So, we're putting out a call for help! A significant part of our fund-raising is local companies or individuals sponsoring one of the 48 beer barrels, either in their name or as a tribute to an anniversary/wedding/christening. This investment is recycled from our profits into the community via grants – you also get two tickets for the festival and beer vouchers to spend on the day.

We recognise that many have had an incredibly tough time over the last year but also some of us have saved money by not having to spend money on the daily commute.

**For one year only** we are asking sponsors to pay £200 to sponsor a beer barrel instead of the normal £100 price. If you would like to sponsor us for the first time, please go to the following web address to reserve your barrel:

[www.charlburybeerfestival.org/sponsors](http://www.charlburybeerfestival.org/sponsors)

Alternatively, drop your request on the form below to Stone Cottage, Pooles Lane, Charlbury OX7 3RT

Sponsor name: \_\_\_\_\_

Dedicated to/Name on barrel: \_\_\_\_\_

Address: \_\_\_\_\_

\_\_\_\_\_

Contact details:-

Email / Phone \_\_\_\_\_

Donation. [ ] £100 [ ] £200

Please enclose a cheque payable to Charlbury Beer Festival Ltd.

We will send you a receipt by return. Thank you.



## New Flexi Walking Group for Charlbury

As a sign of the times a new and informal walking group has been set up by Walkers are Welcome Charlbury

It is very easy to join in with this. Working entirely on WhatsApp members register via a mobile phone into two separate groups; one under five miles which means a morning or afternoon; and the other over five miles or so covering a lunch stop (Sandwiches or a Pub).

Any member can accept another so it is self-administered and a member can be in both groups. The choice of the routes is entirely up to members but should be on public rights of way. So, if you have a favourite walk here is an opportunity to share it with others.

The idea is to organise "at the last minute", meaning a few days before the walk when the weather is forecast to be reasonable.

A walk to be hosted by a member puts on the App an "invitation alert." It is a good way to meet new people and get out of the house!

If this is of interest to you and we know there are many keen walkers in Charlbury then send a text to 07974 565 618 and you will be signed up.



## Beer & Wine Circle

At the time of writing, we seem to be on course with the roadmap out of lockdown and our behind the scenes planning has been taking place.

We are planning to hold our first meeting of this year on 21 June, it will be in the Memorial Hall to allow for spacing and comply with restrictions. To mark our first meeting out of lockdown drinks will be provided, but members should bring their own food. Members will be contacted with full details nearer the time and asked to confirm attendance to ensure we do not exceed permitted numbers.

We will be following this up with a get together in July and an outing in August.

Our AGM is also planned to take place in the Memorial Hall on 20 September, an opportunity to review the last year!

We email our members on a regular basis to keep them informed and anyone else is welcome to join our mailing list, so that they too can, if they wish, join a future tasting.

All the above plans are, of course, dependent on easing of restrictions and subject to change. In the meantime, continue to enjoy your favourite tittle and stay safe.

For more information please contact:  
[charlburywineandbeercircle@gmail.com](mailto:charlburywineandbeercircle@gmail.com)

### ***Font Café at St Mary's Church is delighted to be open again.***

Come to relax, unwind, read the papers, catch up with friends and colleagues and enjoy some delicious home-made cake along with a steaming cup of Fair Trade tea or coffee

### ***Font Cafe***

***St. Mary's Church, Charlbury  
10am to 12 noon every Thursday***

For smaller children we provide a play area with toys. Free Wi-Fi available  
Covid-19 restrictions are still in place so we will provide table service only



# Coffee break page

Compiled by Miles Walkden and Michele Marietta

## June Quiz—see how many you can answer

1. Trooping the Colour is held in London annually on a Saturday in **June**, on which parade ground?
2. **June** has two zodiac signs—name both.
3. What in the UK is celebrated on the third Sunday of **June**?
4. Which animated cartoon character has three triplet nieces named April, May, and **June**?
5. Name the three birthstones for the month of **June**.
6. 'Seven Days in Sunny **June**', by Jamiroquai, is from the soundtrack of which 2006 American film?
7. In which year did **June** Brown first play the role of Dot Cotton in *EastEnders*?
8. Which historical novel begins in 1815 and culminates with the 1832 **June** Rebellion in Paris?
9. The longest day of the year can occur on one of three dates in **June**—name any of the three.
10. In its own country it is commonly known as the **June** Fourth Incident; where did this incident happen?
11. In 1968, **June** Whitfield began her long television partnership with which actor and comedian?
12. Which 1956 film adaptation of a Rodgers and Hammerstein stage musical of the same name features the song '**June** Is Bustin' Out All Over'? (Hint: the film revolves around Billy Bigelow)
13. The name **June** for baby girls in the UK dropped out of the top thousand in 1986, but in which 20th century decade did it peak at 39th?
14. What takes place near Pilton, Somerset in the last week of **June**, each year?
15. What historical event happened on Tuesday, 6 **June** 1944?
16. Which of the following has a 'special month' in the month of **June**: National Sausage Month, Accordion Awareness Month, or Meerkat Appreciation Month?
17. Which month was **June** in the early Roman calendar?
18. What Roman goddess gives her name to the month of **June**?
19. In **June** 1883, the train line that is identified with intrigue and luxury travel started operations. What is it called?
20. The Coronation of Queen Elizabeth II took place in **June** of which year?

Answers on page 43

## The Cotswold Wardens are leading guided walks again

The last walk led by the Cotswold Wardens in the Charlbury area was on 17<sup>th</sup> March 2020, and little did we know then that it would be so long before we could start leading walks with members of the public again. One thing that Covid has highlighted is the importance of being out-of-doors and getting into the countryside. The local paths have been well-used over the past year, although at times the mud has been challenging.

The restart for our guided walks was on 17<sup>th</sup> May (assuming that everything went to plan), when lockdown was eased to allow more people out-of-doors together in a group. However, for those of you who have joined our guided walks previously there are a few changes to note.

We are really looking forward to welcoming people back to the guided walks programme, but we must do this in a safe and careful way. For this reason, if you want to join a walk, you must reserve a place through the on-line booking system. Booking for each walk will begin 14 days before it takes place, and will end two days before the walk date. As well as that, it may be necessary to limit numbers to keep the walks manageable, at least in the short term.

You can book a walk via the website [www.cotswoldsaonb.org.uk](http://www.cotswoldsaonb.org.uk), then clicking on the 'Walking and Exploring' tab and then 'Guided Walks'. Early summer is a glorious time for walking, and we have a variety of walks for you to join.

The Wardens have also been able to begin clearing the backlog of footpath-maintenance jobs that have built up over the past few months. With Charlbury designated a Gateway town for the Cotswolds (have you seen the new board in Church Street, showing the gateway paths?), our first tasks included putting up new waymarkers and making sure that the paths themselves are boot-ready. And over the winter, individual wardens managed to clear another large area of invasive blackthorn in Centenary Wood, using the cut material to build more 'dead-hedges' to provide an additional type of wildlife habitat.

We will be back doing regular work parties as soon as we can, helping to look after the countryside for everyone to enjoy. If you fancy coming along to see what is involved, please get in touch. Our contact details are in the directory at the back of the Chronicle.

*Rosemary Wilson and Simon Walker*

### CHRONICLE ADVERTS

Advertise your business in the **Charlbury Chronicle** and reach over 1550 residences.

To place an advert please ring  
Graham Jowett on 01608 810666 or  
email:  
[gjowettchronicle@btinternet.com](mailto:gjowettchronicle@btinternet.com)

## Reflexology in Charlbury

**Lucy Robertson MAR**

**Tel: 07983 673480**

**[lucyroberson@hotmail.co.uk](mailto:lucyroberson@hotmail.co.uk)**

**[www.lucyrobersonreflexology.com](http://www.lucyrobersonreflexology.com)**  
Foxmead, Hundley Way, Charlbury OX7 3QU



## Charlbury Bowls Club



Well, after the trauma of the past year we were able to get our outdoor season underway on time, albeit with some minor restrictions to meet government guidance. Our Little Ox Brewery green at Ticknell Piece Road is in excellent condition – long-serving bowlers say they cannot recall it better thanks to the work of our contractors and club volunteers.

Our first Open Day in April attracted 35 people to try out the sport for the first time, with a further 9 different people coming on other days. A great response with several signing up as new members. We also started our new Juniors section for ages 7-15 (every Saturday, 11.00am to 12.45pm), and an after-school club for ages 7-10 (from 3.30pm to 4.45pm each Tuesday during the Summer term). We are also holding a Summer School during the Summer school holidays each

Wednesday.

The start of the competitive season was slightly delayed with Men's and Ladies League matches starting a week later than normal, but games come thick and fast thereafter. We have a packed summer of over 50 matches, a record number of entries from the club in County competitions, a tour to Torquay, and hosting the National Finals of the Disability Bowls England Ladies Pairs competition on Sunday 4 July from 10.00am.

Anyone wanting to try out bowls aged from 7 to too polite to ask, just email [enquiries@charlburybowls.co.uk](mailto:enquiries@charlburybowls.co.uk) or telephone 01993 868134 or simply turn up at the club at 6.15 any Tuesday, 2.00pm any Friday, or pop-in any time you see us open.

*Shaun Morley*

# COMPUTER HELP

**Broadband and Wireless. Installation and Training.  
Problem solving. Jargon-free advice. Upgrades.  
Digital Photos. Virus Protection and Removal.**

*Call or email me, Len Kehoe*

*- Computer Science graduate  
with over 30 years experience*

**phone: 01993 810125**

**mobile: 07944 877437**

**email: [thepcbuddy@gmail.com](mailto:thepcbuddy@gmail.com)**

**web: [www.thepcbuddy.co.uk](http://www.thepcbuddy.co.uk)**

THE ORIGINAL  
**CORNBURY**  
\*\*\*MUSIC FESTIVAL\*\*\*  
9th 10th 11th July 2021 The Great Tew Park Oxfordshire

It's been very hard to cancel Cornbury again. In comparison to what everyone's been going through it's relatively 'small beer' but I do feel that I've somehow let people down as other festivals look like they'll happen – albeit later in July and August.

Our loyal supporters have been brilliantly supportive and 100% agree with our decision but it's very disappointing all round. I've been wrestling with this decision for quite a few months but in the end the fact that we can't get Covid cancellation insurance really made the decision for me. You have to be a risk taker to run a festival but trying to produce an event this year was a step too far with the Covid cloud still hanging over us.

I've just heard that more festivals look like they'll have to cancel now as the reality of no Covid cover becomes clear. Of course all events have Public and Employers liability insurance—however if there's a small Covid outbreak say in Chipping Norton a few weeks before the festival the event would have to be cancelled and without Covid insurance any business would go bankrupt in these circumstances.

I think it's been pretty clear for a while that it's unwise to go ahead with events this summer whatever new research currently being undertaken in Liverpool turns up. Our supporters have let me know that they feel the decision to cancel is right because people are nervous of returning to 'mass gatherings' when some people won't have been vaccinated.

If one was being cynical it might be suggested that the major companies who own some Oxfordshire Festivals don't care too much if events are cancelled again as they certainly won't be

refunding the dreaded booking fees anyhow !

I'm proud that over the last 16 years Cornbury has become a real community event involving many many local bands, local business and local schools.

You may not know that despite previously paying them for their attendance the local Police no longer feel they need to attend the event as it's so calm and safe.

It is no exaggeration to say we're the only festival where cash is handed in at lost property! How lovely that we run such a sweet family event for all ages that is pretty much unique in this country. I've very much missed producing the event as I regard my team as 'family' – I have been working with most of them for over 15 years.

I'm slowly going through the process of re-booking and reorganising the line-up. I'm toying with the idea of adding another major artist to the Bill on Friday 8<sup>th</sup> next year. Bryan Adams has moved to his rightful Saturday night slot and our old favourite Jools Holland is likely to close the festival on Sunday July 10<sup>th</sup>.

We've had such fantastic support from press and artists alike over the years and many lovely quotes. I think my favourite two are from Mike Scott of The Waterboys

'A beautifully organised event, quintessentially English, good natured, inclusive, slightly eccentric with echoes of an old country fayre and a classic garden party' – and Jools Holland – 'Cornbury's big enough to attract big bands – small enough to see them'.

See you next year.

*Hugh Phillimore*



## CRAG's BIG Spring Clean Appeal

The aim of the appeal is to find an item you no longer require and turn it into cash for CRAG. Simply locate your item, take a photo, offer it for sale and send CRAG a percentage or all of the sale's proceeds.

A big thank you to all those who have already sold items for our BIG Spring Clean Appeal. Our target was £1000 and we are nearly half way there so please keep selling those unwanted items via the Charlbury website or any selling mechanism you choose and then make a donation using [www.justgiving.com/campaign/crag-spring-appeal](http://www.justgiving.com/campaign/crag-spring-appeal) or contact [treasurer@charlburyrefugee.org.uk](mailto:treasurer@charlburyrefugee.org.uk)

Initially the proceeds were intended for the Meena Project which is unfortunately not operational at the moment so funds will be redirected to the Baobab Women's Project who also work in the Midlands offering support to women refugees – see [www.baobabwomensproject.net/](http://www.baobabwomensproject.net/)

So please keep those items coming and help us reach our target.

Thank you

### CRAG backs Hope

The Hope Project in Lesvos has been helping refugees since 2015 – see [www.hopeprojectgreece.org/](http://www.hopeprojectgreece.org/). The project began as a distribution warehouse serving approximately 30 families a day with basic necessities such as hygiene items, nappies, clothes and blankets. The organisation now has four warehouses used for various projects. One houses an arts project focused on fostering the creative talents of the refugees. Another is designated as a safe place for women, including a beauty

salon, gym and arts & craft centre. A third runs a tailor shop making alterations to items collected from the Distribution Centre and also houses a men's barber shop.

The talented Charlbury-born singer/songwriter Jenny Mahler (aka Jenny Larsen) has created a delightful concert for CRAG, entitled *The Road Goes On*, to raise funds for the Hope Project. Elegantly accompanied on guitar by her fiancé, Joe Smith, she performs a selection of new compositions, old favourites and a lovely Danish hymn. It is available to purchase as a downloadable link. For details please look at: [www.charlbury.info/community/crag](http://www.charlbury.info/community/crag).

### CRAG Bookshop

A fantastic range of donated books is on offer on the CRAG online bookshop, including some amazing illustrated non-fiction, children's and Young Adult books. Many of the books are second-hand but in very good condition, a few are brand new, and all are on offer at bargain prices.

You can browse our catalogue of over 4,500 donated titles, most of which are priced at 50p or £1. Books can be collected from central Charlbury by arrangement in a Covid-secure way. By buying your books from the CRAG bookshop, not only will you be helping to support refugees (all proceeds go directly to CRAG), you will also be recycling books and shopping locally!

Contact [capricornclive@aol.com](mailto:capricornclive@aol.com) for more details.

*Jon Dunleavy*



## All Together In Charlbury – a local helping hand

### Update on ATIC services available

ATIC was set up in 2017 to offer the following kinds of help through our team of local volunteers to Charlbury residents of all ages and circumstances who, for whatever reason, are unable to carry out a task themselves and who have no family or friends available to help:

- transport to hospital or other medical/health/care appointments
- transport for other purposes such as to get to the shops, to take part in a local activity or club or to visit someone in hospital or care home
- getting shopping or prescriptions
- household tasks (like changing a light bulb or smoke detector battery) or occasional gardening jobs
- letter writing, simple form-filling or help with accessing online information
- reading, if you have difficulty reading for yourself
- someone to pop in from time to time for a chat.

The COVID19 pandemic with its required restrictions on face-to-face contact, especially indoors, has meant that recently we have only been able to offer transport to essential (usually medical) appointments (involving a range of COVID-safe precautions) and befriending by phone call. We have certainly been taking people to hospital and other medical/healthcare appointments, including trips to get a COVID vaccine. (We also added a new service – ATIC “on-the-day” Roadwatch bulletins for journeys to Carterton Health Centre for a job!)

It has been great that the Community Centre’s larger team of volunteers have been able to pick up the tasks of getting shopping and prescriptions and other “odd jobs” during lockdown.

As the Government’s “Roadmap” to more freedom gradually moves from stage to stage, we are hoping that soon we will be able to offer our wider range of help set out at the top of this article – but at the time of writing this (1st May) we are not there yet. We will aim to publish updates online (we have an ATIC page in the Community section of *charlbury.info* – Charity and World) and otherwise in the coming months.

It may be that life will not simply return to “normal” after the pandemic but we may all have to adjust to a “new normal” which may throw up new and different needs for help. If you find that you have got something that needs doing which is not on our usual list, you can let us know and we will see what we can do (see our contact details below).

**The key message is always - if in doubt as to what help is available from ATIC at any time, just ring our call-centre number - 01993 776277. This will get you to the Volunteer Link-Up staff, who will see if we can meet your request. The phone line is staffed from 9.00 to 1.00 Monday to Friday with an answerphone at other times which is regularly checked.**

*Meryl Smith*  
*Email: charlburyalltogether@gmail.com*



- Scarification
- Hollow Tining
- Lawn Aeration
- Over Seeding
- Top-Dressing
- Removal Weeds
- Moss Control
- Professional Service

NO CONTRACT

Contact Steve

01865 331501/07894 983801

Email: [cotswolds@greensleeves-uk.com](mailto:cotswolds@greensleeves-uk.com)



All types of tree work carried out including stump removal & hedge cutting.

Contact us today for a free quote

NPTC Qualified & fully insured.

- 📧 [kptreecare.co.uk](http://kptreecare.co.uk)
- ✉ [kptreecare@outlook.com](mailto:kptreecare@outlook.com)
- ☎ 07788 289344
- ☎ 01993 891526

Proud members of  
**Checkatrade.com**  
Where reputation matters





## Charlbury Garden Society

### Upcoming events: Self-drive outings, planting the new Corner House Garden and the Annual Flower and Produce Show

The Garden Society has two self-drive visits planned for members this summer and we want to encourage all gardeners, including children, to have a go at entering flowers, vegetables and produce for a bumper Annual Show in the Memorial Hall on September 11th.

For details of all Garden Society events please visit the Events page on our website:  
[www.charlburygardensociety.org](http://www.charlburygardensociety.org)

Following the much appreciated zoom talk by Emma Harris-Bass of the Kitchen Garden People we are arranging a visit to FarmED, Honeydale Farm near Shipton where the Kitchen Garden People are part of a new centre for farming and food education, focusing on the crucial link between good food and good farming.

The lecture space and kitchen are surrounded by the farm with crop rotation and trial plots, natural flood management, woodland and wildlife habitats, livestock, orchard and apiary.

The date, Sunday June 27th is awaiting confirmation and full details will be available nearer the time.

In the afternoon of Wednesday, July 14th there is a visit to the Old Rectory, Quenington near Fairford, Gloucestershire. The garden is at the bottom of the village opposite St Swithin's church which will be open as

part of the visit. The house and garden are "on the banks of the mill race and the river Coln. This is an organic garden of great variety with mature trees, a large vegetable garden, herbaceous borders, shade garden, pool and bog gardens."

(<https://ngs.org.uk/view-garden/2262>)  
£10 per person, proceeds to St Swithin's church. Most of the garden is wheelchair accessible.

We are going ahead with projects to plant various areas of town starting with the Corner House garden and we are looking for volunteers to get involved. Please email Hugh Belshaw:

[hughandjoan@uwclub.net](mailto:hughandjoan@uwclub.net)

if you would like to join a working party. Open to non-members and helpful children welcomed too.

Finally, allotment alert! There's a trophy to be won. The Wilson-Lade Cup will be awarded to the holder of the best cultivated allotment in Charlbury.

Judging may take place at any time during the growing season. Open to all and no registration required.

To join the Garden Society go to:

[www.charlburygardensociety.org.uk](http://www.charlburygardensociety.org.uk)

*Angela Gwatkin*

Imagine your happy place, it may be on a beach or in a tropical jungle, somewhere sunny, when I consider this, I think of Charlbury Primary School. During my time- in the idyllic Cotswold Setting- joyful memories flood my brain.

The past seven years have been full of fun and laughter, and of course learning. People say there is no such thing as perfect, well our school, to me is just that and no-one can deny it.

Charlbury Primary School is a positively delightful place and it has given me many happy memories that will surely last for years to come. Inside its walls, I have learnt an innumerable amount of useful facts and skills, which are going to foundation my knowledge of life. For that, I am forever grateful.

Imagine my veins filled with excitement whilst my palms sweated profusely, as I tentatively tiptoed through the school gates- my very first day. However, any fears I had soon evaporated as I stepped into the classroom, aged 4.

Smiling faces, tempting piles of toys, Mrs Senior (our lovely reception teacher) saying 'good morning', and the friendly, welcoming atmosphere, all of which warmed me to the bone.

I don't remember much of my first year (with it being so long ago) however the memories I have are fabulous. Many days, my stomach was full of dread and at the same time, excitement. Stepping through the school gates, my adventure began. Meeting new friends and playing games I had never heard of was magical!

During what was a very wet May time- I remember because it rained all of the first night, we travelled to the West Midlands Safari Park. My heart is in my throat as I recall hearing the deafening roars of lions, as I tucked up in my tent.

My favourite memories of that trip was that I got to spend the whole time with my friends, sharing our adventures together.

Years 5 and 6 were out of the ordinary, due to the pandemic. Many people suffered globally, however through our connection with school, we had all the stability we could ask for. Our teachers setting different fun lessons every day, as well as daily Google Meets (like Zoom), meant that we could engage with learning and our friends.

Thinking back over our time and the precious memories we have gathered, I look back with immense gratitude.

I am thankful for the learning, love and the laughter.

*Zander, Leo, Connie and Mia*

**Charlbury Church Services** - These activities are subject to the latest advice from the government. Check updates on the Community pages on [www.charlbury.info](http://www.charlbury.info)



**Charlbury Baptist Church, Dyer's Hill**

Contact: Secretary (01608 810107)

**Sundays** See noticeboard/church page on Charlbury website for news of reopening

**Wednesdays** 7.30 pm on Zoom for midweek study/discussion Join us!

Our Quiet Garden still welcomes visitors.

[charlburybaptistchurch@gmail.com](mailto:charlburybaptistchurch@gmail.com)

[www.facebook.com/dyershill/](http://www.facebook.com/dyershill/)



**St Mary's C of E Church, Church Street**

St Mary's Church, Charlbury and All Saints Shorthampton

Full details of all church services are available in the Leaflet or in the Church porch

Vicar – Revd Dr Sally Welch Parish Office (01608 810230)

[www.stmaryscharlbury.co.uk](http://www.stmaryscharlbury.co.uk)



**Friends' Meeting House, Market Street**

Meeting for Worship at the Friends Meeting House

Sunday mornings 10.30am

For further details contact Sue Terry (01608 811033)

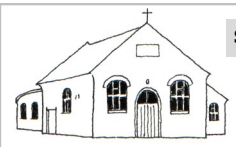
email: [sueeterry@btinternet.com](mailto:sueeterry@btinternet.com)



**Methodist Chapel, Fishers Lane**

Sunday services at 10.30am

Further information from Gill Grason (01608 810154)



**St Teresa's R.C. Church, Fishers Lane**

Sunday Mass. 9.15am every Sunday at St Teresa's.  
Weekday Masses;

9.30am on Monday, Tuesday, Thursday and Friday;

Wednesday: 7.00pm at St Teresa's. followed by Exposition/Adoration.

Friday Mass followed by Exposition/Benediction or Stations of the Cross

Priest. Fr Clive Dytor, The Old Drapery, Church Street, Charlbury. Tel: 07484 158642.

## Churches Together in Charlbury

The last year has been hard for everyone, but far more so for people in places where they were already struggling with shortages of food and water, poor sanitation and inadequate health services. In addition governments everywhere have concentrated resources on the coronavirus pandemic, while other problems have been ignored and funds have been diverted away from providing basic services.

Meanwhile millions of people are having to rethink their lives as a result of climate change and environmental degradation. All around the world communities are facing the increasing threat of floods, droughts and storms and their traditional way of life is no longer viable.

For some people there are signs of hope, when communities work together to protect the environment, adapt their farming practices and share resources. Christian Aid is one of the organisations supporting people who are trying to adapt to a changing world.

In Eastern Kenya for example, drought followed by storms and flash floods has devastated crops and livestock. Some women are walking many hours to fetch water for their family. Christian Aid is helping local people to build low cost earth dams, each with a large basin dug out to collect the water when it rains. These can collect water for drinking and washing and for irrigating the fields.

The project in Kenya is just one example of a wide ranging programme supporting vulnerable communities around the world. In the Amazon basin indigenous people are being helped to protect the forest and resist illegal incursions by mining and logging companies. In the Middle East Christian Aid is helping to provide education and vocational training for young Syrians, male and female, who have been displaced by the civil war. And Christian Aid is a member of The Climate Coalition, a diverse group of organisations, with interests ranging

from sports and nature to faith and international development, united in wanting to protect the things we all love from climate change.

Churches Together in Charlbury has supported Christian Aid for many years but the last year almost put a stop to fundraising. By the time the Chronicle comes out, we hope to have organised a simplified version of the Christian Aid house to house collection and we look forward to the time when other events like our Lent lunches will be possible again. Christian Aid is working with people on the front line of the climate crisis and they deserve our support.

*Rosalind Scott  
Secretary to Churches Together in  
Charlbury*

### Cornerstone

Cornerstone at the Corner House continues to be open Monday – Saturday 10am -1pm providing a community space for food sharing, food parcels for those in need and access to second hand books, jigsaws and puzzles, and school uniform.

We have recently started a learning café running twice weekly for children wanting some support in their learning. We will be running a weekly coffee morning from June and hope to start some adult learning events – up to date details available at [charlbury.info](http://charlbury.info)

Do please start to bring in your spare home grown produce once the growing season starts!

If you would benefit from help with food each week, or would like a direct referral to support services such as Citizens Advice please do get in touch or pop in.

If you would like more information on the Cornerstone, please contact us at [cornerstone@stmaryschurch.co.uk](mailto:cornerstone@stmaryschurch.co.uk), or call us on 07510772764 during opening hours.



## Charlbury Town Council News

### **New Town Council Elected and Operating**

This is the final report from the retiring town council which has now reached the end of its term of office, which was extended for a year because of the Covid-19 emergency. As you read this, the new council of 12 members elected on 6<sup>th</sup> May 2021, will have been sworn in, have held its first Annual Meeting, elected a chairman and vice-chairman and assigned duties for the coming year.

Our congratulations and best wishes go to the successful candidates elected to form the new town council. They are: Janet Burroughs, Tim Crisp, Gareth Epps, Gary Harrison, Peter Kenrick, Tony Merry, Frances Mortimer, Nick Potter, Dan Raymond-Barker, Liz Reason, James Styring and Claire Wilding.

We were delighted to see so many, and such a wide variety of candidates standing for election to the town council this time and our thanks go to all of them for their commitment to the town and community and for providing the people of Charlbury a real democratic opportunity to choose the council that the community wants. Thanks also to everyone who turned out to vote or submitted postal votes.

The new council will operate for a shortened term of three years (instead of the normal four) due to the one-year postponement to elections caused by the Covid-19 emergency.

We would also like to congratulate Liz Leffman on her successful re-election to serve both as Oxfordshire County councillor for Charlbury and Wychwood and as a West Oxfordshire District councillor for Charlbury and Finstock. The newly elected Charlbury Town Council looks forward to working with her to serve the people of Charlbury in the forthcoming years.

The council also wishes to recognise the following members of the outgoing council who will not be serving on the new

council, whether for personal reasons or by virtue of the election results. Thank you Kathy Broughton, Natasha Ely, Richard Fairhurst our outgoing chairman, Vince Hill, Phil Morgan, Ron Prew and Robin Puttick for your service to the community as members of the council.

### **Charlbury Neighbourhood Plan Referendum – Thursday 10<sup>th</sup> June 2021**

West Oxfordshire District Council (WODC) has announced that the Charlbury Neighbourhood Plan 2031 will proceed to a referendum which will be held on **Thursday, 10th June 2021**. This is the final step in the long process of producing the plan and the decision is yours!

All residents within the Charlbury Parish who are included on the electoral register will be eligible to vote. If a majority vote in favour of the Charlbury Neighbourhood Plan, it will be used to inform decisions on planning applications within the Charlbury Parish.

The referendum version of the Charlbury Neighbourhood Plan is available to download and view on the West Oxfordshire District Council website at [www.westoxon.gov.uk/charlbury](http://www.westoxon.gov.uk/charlbury) along with other referendum information.

Paper copies are also available for you to view at the Charlbury Community Centre during their normal opening hours - just ask at the reception desk. Please note that these copies can only be viewed at the community centre and cannot be taken away.

**Please use your vote!**

### **Charlbury Honoured Citizen Awards 2021**

We are delighted to announce three more Honoured Citizen Awards have been granted for 2021 to Leah Fowler, Joan Belshaw and Alan Fraser. Congratulations to them all and I am sure you will wish to join with us in thanking

them for their service to the town and



# Charlbury Town Council News

community of Charlbury over many years.

The awards will be presented by the outgoing chairman, Richard Fairhurst at a date and time to be arranged. Now that Covid-19 restrictions are gradually being eased, it is our hope that we can organise some kind of safe community event later in the year to thank our Honoured Citizens and generally to celebrate the great tradition of volunteering in Charlbury. We will keep you informed.

## Affordable Homes

During the Neighbourhood Plan consultation, Cottsway Homes outlined a possible scheme for predominantly affordable homes on land to the east of Jefferson's Piece and requested an opportunity to discuss the scheme with the town council.

The town council agreed for a small group to meet with Cottsway's representatives subject to detailed conditions set out in an engagement statement which can be viewed on the town council website. As well as setting out town council expectations for any scheme, the engagement statement requires meetings to be **transparent** with notes placed in the public domain and **without prejudice** meaning that comments made will not imply town council support. We also expect Cottsway to conduct meaningful consultation with the local community before any application is submitted. Cottsway accepted the town council's conditions and a virtual meeting was held on 11<sup>th</sup> March 2021. Notes from this meeting are also available on the town council website as per the transparency condition. Copies of the engagement statement and meeting notes can also be obtained from the town clerk.

It should be noted that the Cottsway scheme is much smaller than the planning application (17/02376/FUL) submitted by Lagan Homes and that the Cottsway proposal predominantly seeks to meet identified local need for affordable homes. Details of Cottsway's

suggested scheme can be viewed at <https://westoxon.gov.uk/media/yiqhfmud/cottsway-housing-association.pdf>.

## Gradual Easing of Covid-19 Restrictions

After a most challenging year for all, we are all delighted to acknowledge and enjoy the gradual relaxation of restrictions, with the re-opening of businesses, resumption of sporting activities and increased opportunities for families and friends to meet again. While we all seek to make the most of the greater opportunities available to us, we urge you all to stay vigilant and act responsibly with due regard to the vulnerable and isolated members of our community. As we look around the world we remain acutely aware that the pandemic is far from over.

Looking back over this difficult year it is clear that the response of the community to this emergency has been exemplary and we would like to acknowledge this with a big **THANK YOU**:

Thanks to all the volunteers, organisations and businesses who have worked hard to support our community through the difficult times of the pandemic. It is impossible to name everyone but we would like to give a special mention to the Charlbury Community Centre, Charlbury Medical Centre, Cornerstone and ATIC.

Thanks to Oxfordshire County Council and West Oxfordshire District Council for their help and support for local communities and businesses; and thanks to all of you for your patience, for the high level of observance of ever-changing regulations and for the consideration shown to the vulnerable members of our community. You can contact: Roger Clarke, Town Clerk at [charlburytc@btinternet.com](mailto:charlburytc@btinternet.com) or 01608 810608 9am to 5pm (not weekends or Bank Holidays) with any queries you may have.

*Peter Kenrick*

---

**From County & District Councillor Liz Leffman**

01608 810153 [liz.leffman@oxfordshire.gov.uk](mailto:liz.leffman@oxfordshire.gov.uk)

---

I am writing this having just learned that I have been re-elected as your District and County Councillor. I would like to take this opportunity to thank everyone in Charlbury for re-electing me, and to say that I look forward to working with the new Town Council and supporting Charlbury residents over the next few years. You can always get in touch with me if you have a question or there is something that you think I might be able to help with.

Since my last report, the County Council has approved the new budget for this year. The Liberal Democrats, however, decided that they were not going to vote for the budget, because too little provision had been made for adult social care.

The Council was allowed to raise council tax by 5% to provide for this, but unlike many councils around the country, Oxfordshire decided that it was more important to keep council tax low, so they only raised it by 3%, thus depriving the adult social care budget of £8 million. They could have taken this money from reserves, too, but chose not to. For care homes and those who deliver care to people at home, this was a big blow,

especially after the incredibly difficult year that they have had due to the pandemic, and the extra costs that have had to be incurred as a result. The way we finance adult social care as a nation needs a thorough overhaul, and the increase in council tax to pay for this was only ever going to be a stop-gap, but it is a great shame that the County Council decided this.

One aspect of the budget that is good news, however, is that there is a provision for funding 20 mph speed limits across the county. The amount allocated is small – just £250,000 – but it is a step in the right direction. I know that many people in Charlbury would like to see a lower speed limit on The Slade, and this is a long-term objective, but to achieve lower speeds we would need traffic calming measures and these are very expensive to install. Hopefully with the new Town Council I will be able to work on this for the future. Now that the pandemic is receding, Thames Valley Police are re-instating the Community Speedwatch programme, so that should help make our excellent Speedwatch team even more effective.

---

**From District Councillor Andy Graham**

07908 832632 [andyg2439@gmail.com](mailto:andyg2439@gmail.com)

---

The Pandemic has controlled people's lives over the past year and I have been heavily involved in supporting the senior management in the roll out of discretionary grants to businesses and ensuring even those who initially fell through the net were eventually given support particularly the one person business or self employed such as hairdressers and taxi drivers etc.

In addition, I was in constant touch with the shielded and vulnerable in our communities ensuring their needs health and food delivery was given the highest

priority by referring staff to offer support. This was largely conducted by telephone and email on a regular basis until it was no longer needed.

The closure of the leisure centres and gyms has been a great concern and their welcome reopening recently has had an impact on the council's finances. I was involved in many meetings on this to ensure leisure provision would be secured as a result of huge losses. This largely is the case but we are robustly monitoring the situation.

Clearly climate change is impacting at the same time and the council through its climate change working party has now a strategy in place and jointly agreed by Oxfordshire wide authorities. The most telling impact will be the action plans needed to ensure real change will take place. Planning policies need to enshrine climate change so that all developments comply with robust and enforceable "green" regulations that will truly help to sustain our communities. That is the priority for 21/22 and I will do my best to ensure that our town knows and is engaged meaningfully in exactly what is planned and how everyone can play their part.

Virtual Meetings are due to end soon although the return to face to face meetings will need to be handled in a sensitive and careful way to protect the health and well being of all. This may mean some meetings will continue virtually whilst others will be face to face. A pragmatic approach needs to be adopted. More details to be announced shortly.

## Charlbury Day Centre

Using a well-known quote -we are moving forward into broad sunlit uplands now.

Our members and volunteers are all immunised and it will be safe to restart the Day Centre in late June or early July and we intend to open for just lunch initially, before we arrange whole day sessions.

Alas, we have fewer members now than we had in March last year: not because anyone has succumbed to the Covid virus, but because of anno Domini and general health problems.

As always we would welcome anyone, who thinks they would like to join us and would be happy to invite anyone interested to come to a free lunch, when we do reopen (transport provided).

If you would like to come and meet us, please contact Carolyn Connolly 01608 819001 or Bob Tait 01608 810150.



## Charlbury WI

Charlbury WI continues to flourish during these times with all our meetings on Zoom—we have got quite adept at it now! We have even managed to get a few new members! In addition to our speakers at our monthly meetings, we will back to holding craft workshops, theatre visits, walks, and visits to places of interest.

If you feel inspired to try new activities and make new friends, then why not try Charlbury WI?

We will be holding a Coffee Morning in the Memorial Hall on Saturday 10 July from 9.30—12 noon. Yummy cakes will be on sale! Hope to see you all there!

In June we will be having a Treasure Hunt around Charlbury, leaving in groups of four. This will start from the Playing Close at 7.15-7.30pm. We will hold our "Summer Jolly" on 21 July with a BBQ at the Bowls Club (members only) when we will all be able to meet up fully. And in August we shall be holding a Craft session, in the Memorial Hall from 7.30pm on 18 August.

Our two regular events; one a book club which meets six weekly, at the moment on Zoom, next one is 21 June, and a monthly Craft and Cuppa Session which will start up again on 17 July at the Bowls Club. These are for members only.

You are welcome to come along to the WI as a visitor to have a chat and see what we do, before deciding whether to join. We meet on the **third Wednesday** of the month in the Memorial Hall at 7.30pm. Details of forthcoming events are on the Charlbury website or contact our President, Miriam Evans at [charlburywi@oxfordshirewi.co.uk](mailto:charlburywi@oxfordshirewi.co.uk).

*Susie Finch*

## Charlbury's solar farm funds good causes

If you live in Charlbury you will have passed Southill Solar farm many times on the road to Witney, its distinctive panels shimmering in the sun or dripping in the rain. The solar farm is a community owned enterprise that produces 4,500 mega-watt hours (MWh) of renewable energy a year – almost enough to match the electricity consumption of Charlbury, Finstock and Fowler.

It began generating power for the grid in November 2016. Situated on former arable land, the site around the panels is being redeveloped into a haven of plant and animal biodiversity. Less well known is the solar farm's emerging role as a funder of local good causes, in particular projects that reduce carbon emissions and/or help protect the environment.

The sums of money involved are quite significant. If everything goes to plan, the solar farm may distribute as much as £30,000 a year to useful projects every year for the next 20 years or so (the expected remaining lifespan of the solar farm). But this is not guaranteed – the exact sum will depend on the solar farm's financial performance and there may be years in which less is paid out.

Southill Solar does not aim to make profits from selling the power it produces. Financial surpluses (i.e. money left over after operating costs, debt charges and interest payments to investors have been made) are paid out as grants to worthwhile causes located within 25 miles of Charlbury. The broad terms on which this happens are set out in a 2015 agreement with West Oxfordshire District Council which gave planning approval for the solar farm to be built.

This agreement includes some specific

commitments. For example, Southill Solar has agreed to pay up to £100,000 to each of two community facilities in Charlbury (the Community Centre and the Corner House) to support the installation of energy efficiency measures in the buildings.

The Community Centre, which opened three years ago, has already received £70,000 of this funding.

Beyond these specific commitments, Southill Solar has considerable discretion on how surpluses from its operations (described as 'community benefit') should be distributed. But it does not make the decisions itself. The solar farm is owned by Southill Community Energy (SCE), a member-controlled co-operative. SCE has passed responsibility for allocating surpluses to worthwhile projects to Sustainable Charlbury (SusCha), a local environmental group.

SusCha's involvement goes back a long way. Indeed, it launched and led the early stages of the campaign to build the solar farm. In 2018, SusCha was converted into a Charitable Incorporated Organisation (CIO), so that it could become the channel for distributing the solar farm's surpluses for the benefit of the local community.

SCE transferred £30,000 to SusCha for this purpose in March 2020. The same figure has been allocated for community benefit payments for the current financial year. You may be interested to know where the money is going. In the last year, SusCha's eight-member committee of trustees, who usually meet twice a month (on Zoom during the lockdowns), have approved three projects.

These are: paying up to £10,000 to Westmill Sustainable Energy Trust

(WeSET) as a contribution to a new education centre; £5,000 awarded to The Kitchen Garden People, a local supplier of organic food boxes, towards the purchase of two poly-tunnels to grow vegetables at FarmED, a regenerative agriculture centre; and £2,600 for a carbon mapping project of three sites in and close to Charlbury. The Town Council is supporting a similar carbon audit of the Mill Field recreational area in Charlbury.

Several other projects are also under consideration. For example, discussions have taken place with Charlbury Bowls Club on ways of making their existing building and a planned new extension zero carbon.

For the future, Tim Crisp, chair of Sustainable Charlbury, is keen to support projects which add substance to Charlbury Town Council's declaration of a climate emergency in 2019. 'We look forward to working closely with the Town Council's Environment Working Group and help deliver a zero carbon Charlbury by 2040', he says.

Meanwhile, Kath Lucas, one of five recently appointed trustees, thinks the priority should be projects that help tackle poverty and reduce social inequality. 'Solutions to climate change require the creation of cohesive communities', she explains.

Maybe you have some ideas. If so, please email:  
[team@sustainablecharlbury.org](mailto:team@sustainablecharlbury.org).

To apply for a grant, visit [www.sustainablecharlbury.org](http://www.sustainablecharlbury.org) and click on the heading GRANTS.

*Mark Gregory  
Trustee of Sustainable Charlbury*



## Charlbury Street Fair 2021

How will the summer unfold? With the COVID-19 vaccine programme and warmer weather, we can see the light at the end of the tunnel. September 18<sup>th</sup> is the date for our postponed 2020 Street Fair and we are making arrangements for the Fair.

As we know, 2020 was the first year with no Street Fair since its recent inception in 1954. 2021 will be an event to remember! Like last year, it's "Better to 'Plan for the Best, be Ready for the Worst'", so we are already lining things up.

We intend having another 'Scarecrow Competition' in the run-up to the Fair and hopefully music and other events. Please watch out for information on this on [www.charlbury.info](http://www.charlbury.info) and on posters around the town

If you would like to help do get in touch. We are asking for someone, for example, to help with publicity, as this is a key 'vacancy', as is someone to lead on catering.

If you'd like to know more, or to volunteer in any capacity, even just for a couple of hours on the Fair day, contact me at

[csfchairman@charlburystreetfair.org](mailto:csfchairman@charlburystreetfair.org).

Do please save the date

**18<sup>th</sup> September**

in your diary as the Street Fair day.

*John Dora  
Chair, Charlbury Street Fair Committee  
[csfchairman@charlburystreetfair.org](mailto:csfchairman@charlburystreetfair.org)*

# PELLMANS

## Your Local Solicitors

- **Business and Employment Law**  
Contracts, Legal Compliance  
and Disputes

- **Property**  
Residential, Commercial  
and Agricultural

- **Wills, Probate and Trusts**  
Tax Planning and Lasting  
Powers of Attorney

**01865 884400**

**[www.pellmans.co.uk](http://www.pellmans.co.uk)**

**1 Abbey Street, Eynsham, Oxford OX29 4TB**  
*Home visits and evening appointments available*

# BLENHEIM TAXIS

Local/National      Airport Transfers  
Airport specialists  
Complimentary Wi-Fi  
**Charlbury based**

**07773 000 444**

[www.blenheimtaxis.com](http://www.blenheimtaxis.com)

email: [enquiries@blenheimtaxis.com](mailto:enquiries@blenheimtaxis.com)

All major credit cards accepted  
Corporate accounts welcomed



# Museum Plant Sale



**Saturday 5th June**

**in front of the  
Memorial Hall**

**10 am - 12 noon**

Donations of plants and produce welcome  
Please bring to the museum  
Friday 4th June 6-7pm

We will be operating a one-way system  
to be Covid compliant





## News from Charlbury Pre-School

It has been wonderful to welcome lots of new joiners to Pre-school this term. The children have been enjoying the bright spring weather and spending more time outside – including watching this year’s tadpoles develop (with the frogspawn making it through April’s ice and snow!), planting and labelling potatoes, peas and other seedlings, and talking about pollination through observing our blossoming apple tree.

Indoors we have continued a range of structured activities and free play, including reading a range of stories which have sparked questions around space, size and numbers as well as imaginative play from the children, and we have been seeing friendships developing over the term.

Looking forwards we are hoping to welcome parent volunteers back into Pre-school after May half-term. They have been much missed and we are excited about being able to integrate more into the lovely Charlbury community again after such a long time.

Thanks to all those who have bought or sold items in our Mumble Jumble sale! Over £240 has been raised so far, and the link is still open for donations via Facebook marketplace or the Charlbury website: [www.justgiving.com/campaign/cpsmumblejumblesale](http://www.justgiving.com/campaign/cpsmumblejumblesale). More fundraisers including an outdoor film screening are in the pipeline so watch out for these too.

Thanks also to Charlbury Town Council for providing a grant for office storage space to the Pre-school, and to those who have offered external paint for sprucing up our garden equipment, which the children love to play with. A painting session is being planned and we will be looking for some kind volunteers to help out—details to be shared soon!

Limited spaces are still available this term (mornings only) - enquire for more details. There will be more spaces coming up in September when we say goodbye to many of our current Pre-schoolers, and enquiries can be made now if you would like to arrange a visit to see the setting. Please get in touch at [admin@charlburypreschool.org.uk](mailto:admin@charlburypreschool.org.uk) or on 01608 811200.

Lastly, the committee are really keen to hear from anyone who would like to join them. As many of the current committee will be stepping down in July when their children leave, we are urgently looking for new members.

You don’t have to have children at the setting to be a trustee – perhaps you have experience in education or as a trustee of another charity and might be interested in helping out over the next year, or longer term? You can put your name forward or get in touch for an informal discussion by emailing [committee.charlburypreschool@gmail.com](mailto:committee.charlburypreschool@gmail.com).

*For more information about the Pre-school, please check out our website – [www.charlburypreschool.org.uk](http://www.charlburypreschool.org.uk).*

*Mary Totman*





## Charlbury Community Speedwatch

Our own observations as we go about Charlbury on a day to day basis are that there are far too many speeding motorists and from conversations with friends and neighbours, and judging by the views expressed on the Charlbury Forum, there are a lot of people in the town who are equally concerned.

The lockdowns brought about by the pandemic have affected the activities of the Speedwatch team, just as they have affected the lives of everyone in the town. However, we have been able to increase the number of monitoring sessions and the locations covered, resulting in some truly startling findings with speeds in excess of an eye watering 60 mph—more than 200% over the limit! There is no road in Charlbury where such a speed is acceptable. Thames Valley Police (TVP) have told us that as we come out of Lockdown they will be fully supportive of our efforts to reduce speeds and make Charlbury's roads safer for everyone.

We are pleased that residents continue to tell us of the roads that are of particular concern to them and we will certainly focus our attention on those locations. The data collected at these sessions is passed to TVP, Charlbury Town Council and, through County Councillor Liz Leffman, to Oxon County Council. In future perhaps it should also be sent to the newly elected Police and Crime Commissioner for the TVP area. It is also published on the Speedwatch page of the Charlbury website.

One such location requiring attention but for a different reason is on Banbury Hill, by the allotments, where the old limit of 30 mph is still painted on the road surface at the start of the 20 zone. We have asked through "fixmystreet" to have Oxon Highways remove this out of date and misleading signage as soon as

possible.

Should we also be asking Oxon Highways to install "pinch points" as the various roads enter Charlbury? "Gateways" and painted "Dragon's Teeth", giving the effect of the road narrowing, are widely used across the country to reduce speeds – why not here? Similarly, there are requests to have '20' painted on the roads at the entry to the zone. Does anyone want to bet against budgetary constraints being given as the reason for refusal?

We've been asked about publicising registration numbers of speeders and we are waiting to hear from TVP on this. Speedwatch groups in some areas of the country do go as far as publishing the make and colour of offending cars, as well as part of the registration number, e.g. A B 1 2 \* \* \*. This is something that Charlbury Community Speedwatch is considering.

We look forward to our good working relationship with Charlbury Town Council continuing, following the election of the new council earlier this month and are encouraged by the recent council proposal to include in their budget for 2021/2022 a sum of £5,000 for environmental projects. The town council has been very supportive of Speedwatch in the past and we hope that at least some of the proposed £5K will be spent on additional Speed Indicator Devices "SIDs".

If you'd like to contact us, please email [charlburycsw@gmail.com](mailto:charlburycsw@gmail.com) or post something on the Forum.

Finally, and for the wellbeing of everyone, please set an example to others and drive within the limit.

*Brian Murray*

## Churchill at Ditchley

### “When the moon was high”

We all know Ditchley, but do we know that Churchill and his entourage used it at weekends 13 times during the first part of the war (November 1940 to September 1942), when Chequers was exposed in a full moon to an active Luftwaffe. We were aware that the Germans had taken photographs of Chequers pre-war and during the Blitz on London Chequers was bombed but there were no direct hits. The first two major successes for the Allies, Stalingrad and El Alamein, were not until later in 1942. These were indeed the darkest hours.

Ditchley (not opened to the public) was owned by wealthy Anglo-American MP of Market Harborough, Ronald Tree, who was apparently given four days' notice that they needed Ditchley. Churchill had spent a weekend there with Anthony Eden just after the Munich Hitler/Chamberlain (“peace in our time”) Agreement in 1938. Surprisingly there was no recognition after the war for Tree who had been a generous host for 13 more weekends. Prior to the war Tree had been at the centre of an anti-appeasement group reluctantly led by future Prime Minister Eden. They used to meet regularly before the war at Tree's London town house. Chamberlain (who was revered at that time) had even had his phone tapped! Churchill had been kept away from the group by Eden, possibly because he did not want such a dominant figure or maybe saw Winston as a threat?

Originally a Tudor manor house (visited by Queen Elizabeth in 1592), Ditchley was rebuilt in the 1720s and acquired by Tree in 1933 when he spent considerably on a major upgrade. It was far more elegant than Chequers and as Churchill entertained extensively, he said that not only was the food much better but unlike Chequers it had a film cinema which was a major relaxation late into the night for Churchill and his guests, although quite often the guests just wanted to get to bed!

Ditchley is of course close to Blenheim which during the war was the HQ for MI5 (having moved from Wormwood Scrubs prison) and Churchill often made “en passant” secret visits. Hitler had designated Blenheim as his future home and ordered it was not to be bombed (including Oxford) even though both are very clear from the air; which may explain why MI5 was there!

Ditchley clearly played a major part in bringing the US eventually into the war. Ed Murrow the legendary CBS broadcaster and pro US involvement and the similarly new US Ambassador John Winant (replacing the negative Joseph Kennedy) were very regular weekenders with the Churchills and Murrow even had an affair with Sarah Churchill (both being married at the time). They were joined later by Averill Harriman who managed the US Lend Lease programme. This group became part of the Churchill family to the chagrin of Churchill's wife who just wanted a quiet weekend for her husband.

Individual relationships were very important, particularly at this time of hesitancy by US President Roosevelt and Congress to join the war. Harriman himself had an affair with Churchill's daughter in law Pamela who was “The Hostess” of London (financed by Harriman) while husband Randolph was in North Africa. They did however marry 30 years later when Harriman was 79 and Pamela 51. Pamela also had an affair with Murrow which no doubt also developed at Ditchley and Chequers. Reportedly, Randolph (an inherent gambler and also known for playing away) returned to discover his wife's affair, and challenged his parents aggressively over this, leading to an everlasting fraught relationship as they denied all knowledge.

The most significant guest at Ditchley (in January 1941) was Harry Hopkins, personal advisor and long-time friend of Roosevelt to the extent that he even

## Ditchley (contd)

lived in the White House. He was in the UK for 4 weeks with Churchill not letting him out of his sight! One after dinner session at Ditchley went on to 4.30 am. There is no doubt that it was time well spent by Churchill. An invasion was expected imminently but Roosevelt had more than one eye on his re-election in November and prevaricated until the Japanese bombed Pearl Harbour. He did, though, let us have 50 destroyers in exchange for US Naval bases around the world. America joined the war in December of that year.

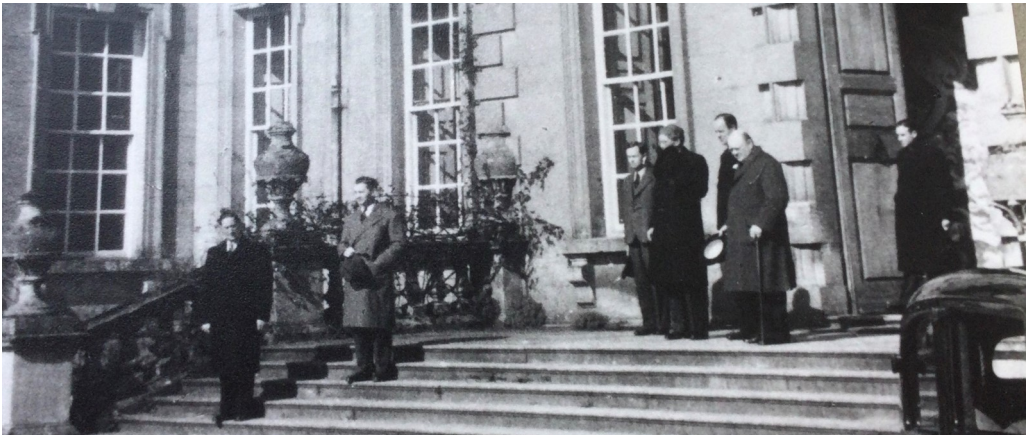
When you walk round Ditchley think how much went on and how the late-night dinners and the walks in the park helped save us from the Nazis.

Ditchley Park continues to convene and host guests eminent in their field for conferences and dialogue on a wide span

of topics and issues of public interest both virtually and at Ditchley as conditions allow in the current pandemic. US and transatlantic ties remain strong through, most directly, the American and Canadian Ditchley Foundations. While the core purpose of Ditchley Foundation itself is to think new things and make new connections through its conference and events programme, the ambition is to deliver this through cutting edge technology blended with the best possible level of heritage and historic fabric conservation.

The author would like to thank Mike Montagu, Bursar at Ditchley, for his help in researching this article. The views expressed are my own.

*Paul Jackson*



*Guests at Ditchley including Sir Winston Churchill (right)*



## News from the Charlbury Patient Participation Group (CPPG)

Over the last couple of months there have been several changes at the Charlbury Medical Centre.

We welcome **Kathy Gale** as the recently appointed Practice Manager to Charlbury Medical Centre. In her own words: *"I have recently returned to the Cotswolds having spent 22 years working in general practices in Norfolk, Berkshire and Surrey. Alongside my role of practice manager I have worked closely with Clinical Commissioning Groups, troubleshooting for other practices in need. I love the work and challenges that general practice brings and have an enormous amount of positive energy. I am so thrilled to have joined The Charlbury Medical Centre and look forward to working with you all."* In turn, members of the CPPG are looking forward to working with Kathy to continue to bring the patient's voice to the practice and to act as a bridge between the medical practice and patients.

**Wesley Rouse** will continue as finance manager and will also continue to be involved in the vaccination programme.

**Dr Mel Hurney** is on maternity leave and maternity cover is in place until she returns.

**Nurse Helen Jones** left the CMC on 11<sup>th</sup> May after eleven years, and will be much missed. Her work as asthma specialist and more recently her efficiency at organising the vaccination clinics have been impressive.

**Rhiannon Stidever:** First Contact Physiotherapist (FCP). Rhiannon provides an assessment and diagnostic service and will refer for further investigations, to local community physiotherapy and other services as necessary. She will also advise on self- management and/ or exercise.

Some examples of when to consult Rhiannon:

- Neck pain eg whiplash.
- Back pain including disc problems and sciatica.
- Spinal related pain travelling to arms, hands, legs and feet including numbness and pins and needles.
- Trapped nerve pain eg carpal tunnel syndrome.
- Osteoarthritis.
- Limb weakness after orthopaedic surgery.
- Sprains and strains, sports injuries.

To book an appointment to speak to Rhiannon please ring medical reception – 01608 811680 after 9:00am. She works every Friday and one Wednesday a month.

**Sarah Dawson:** (Clinical Pharmacist) Sarah's main role is to monitor medication prescribed for patients from secondary care (hospitals). Sarah is at the CMC every Tuesday.

Rhiannon and Sarah are employed by the Rural West Primary Care Network of which CMC is a member, so we share their time and skills with the other practices within that network ie Broadshires, Bampton, and Burford.

### **Patient Access to Surgery:**

Throughout the lockdown and restricted access the CPPG has been working with the CMC to attempt to make the patient experience of attending the surgery more patient friendly by providing shelter. First we tried a marquee kindly provided by the Beer Festival which blew away (twice). A canopy is now in place (thanks to Sue and Peter Smith, and Bob Wright



## CPPG (continued)

of Wright Construction) to protect patients against the worst of downpours (so we had an April drought, opposed to the showers). However, the good news is the doorbell to the surgery is now working and up to four patients may now wait inside. In addition CPPG has been providing a **Meet & Greet** service for two hours in the morning which reduces waiting time outside the surgery and pressure on CMC staff. We are very grateful to all volunteers who give up their time to do this.

**Vaccination Clinics:** We are very grateful to all staff at CMC for the efficient vaccination rollout. The second vaccinations are well underway. We would also like to thank all the volunteers who welcome and direct people as they arrive for their vaccinations, enabling the clinics to run quickly and smoothly. We should remember that the availability of the vaccines is out of the hands of GP practices and they often get very short notice of delivery of supplies. Please **do not** contact the surgery about your vaccination date, letters will be sent out to those who are eligible for the next clinic. Information regarding clinics is made available on the CMC website, Charlbury town website and is e-mailed directly to CPPG members.

**Healthwatch Oxfordshire (HWO):** We maintain close links with HWO, an independent watchdog listening to people's experience of all aspects of

health and social care. Their website has a feedback centre where people can leave comments and ask questions, or they can be contacted by phone on 01865 520520. The results of their recent GP survey are now available, and one of the areas identified in need of improvement is the CMC website. Kathy Gale has agreed that this needs to be addressed.

**CPPG Newsletter:** The April edition concentrates on 'Heart Health' particularly in women, but there are also articles appropriate for both men and women about how to maintain a healthy heart including where to find appropriate exercise and yoga therapy classes in Charlbury. The newsletter is available on line via the Charlbury website (News) and in the Health section at the bottom of the CPPG page.

### Some Reminders:

Charlbury Medical Centre requests that you do not ring until 9:00am unless you need an urgent/same day appointment. This allows the telephone lines to remain free for those in need.

Do consider joining the CPPG for up-to-date information and the opportunity give your opinion.

[patientgroup.charlbury@nhs.net](mailto:patientgroup.charlbury@nhs.net)

*Deborah Hofman*

## Coffee Break answers

1. Terry Scott
2. Gemini (until June 20) and Cancer (from June 21 onwards)
3. Pearl, alexandrite, moonstone
4. The Devil Wears Prada
5. 1985
6. Les Misérables
7. 20th, or 21st, or 22nd
8. Tiananmen Square, Beijing, China (1989)
9. 20th, or 21st, or 22nd
10. Tiananmen Square, Beijing, China (1989)
11. Terry Scott
12. Carousel
13. 1920s (specifically 1925)
14. Glastonbury Festival
15. Normandy beach landings
16. Accordian Awareness Month
17. Fourth. The year originally began with March.
18. Juno – the Roman goddess of marriage and childbirth.
19. The Orient Express
20. 1953

## **New “Bowled Over” lawn bowls taster sessions at Charlbury Bowls Club**

Dementia Friendly Charlbury is delighted to publicise Charlbury Bowls Club's "Bowled Over" sessions which started on 17 May. These are six free monthly taster outdoor bowls sessions especially for people with memory and thinking problems and their family/friends (on the third Monday of each month from 2.30 to 4.30 p.m.).

Participants do not need to provide any of their own equipment and the only requirement is flat-soled footwear like trainers or anything with no heels.

The best map of the Club's location can be found on the Club's website [www.charlburybowls.co.uk](http://www.charlburybowls.co.uk)—see Contact Us. Go to the map and click on the icon like a cross in the top right-hand corner.

Shaun Morley, Bowls Club Treasurer and organiser of the sessions, does not need interested participants to contact him before turning up at a session, unless you want to find out something more.

You can contact him on:-

01993 868134 or  
[enquiries@charlburybowls.co.uk](mailto:enquiries@charlburybowls.co.uk).

## **How has coronavirus affected people with dementia? Some thoughts from the Alzheimer's Society**

“Lockdown measures and tiered restrictions have been affecting people in many ways.

The more common effects on people with dementia include depression or anxiety, loss of confidence or withdrawal due to lack of social interaction, and disorientation with changes in routine (this includes changes to their pre-lockdown routine, as well as changes to the routine they have got used to during lockdown itself).

For many people, the process of coming out of lockdown and tiered restrictions will be one of re-engaging with the world and getting used to going out, interacting socially, and generally getting back to some form of normality.

It can be useful to look at the routines people were in before lockdown started and look at ways to reintroduce elements of these routines slowly and gradually. Some activities may need to be adapted for the person, for example rather than going back to a busy shopping centre, a short trip to a local shop might be a helpful way to reintroduce someone to going out and buying groceries again.

It is important to note that due to the length of time that lockdown and various tiers have lasted, some people will find that their dementia has progressed which means they are unable to do the same things they used to. These skills cannot always be relearned. This might mean that adaptations will need to be made to help them live as well as they can with the skills and abilities that they have.

The most effective way to support a person coming out of lockdown or tiered restrictions will depend on the type of their dementia, how far it's progressed and how it's affecting them, as well as their individual personality and life history. It is likely that there will be a lot of trial and error. Our online and printed information about changes in behaviour would be very useful whether the changes are caused by being out of practice or losing skills as part of the person's dementia having progressed (<https://www.alzheimers.org.uk/about-dementia/symptoms-and-diagnosis/symptoms/behaviour-changes>)

You can contact Dementia Friendly Charlbury via Meryl Smith on 01608 810192 or Sue Smith on 01608 811007 or email us at [charlburydf@gmail.com](mailto:charlburydf@gmail.com)

## Goodbye Weeds



Prices from  
**£15** \* per quarter



With prices from as little as **£15\*** per quarter for providing a great service, is it any wonder that 40% of our new customers come to us through recommendation.

So, call today for your **FREE** lawn analysis:  
**01869 345333**

\*Prices based on a lawn size up to 60m<sup>2</sup>

## Hello Beautiful Lawn



## Hook Norton Veterinary Group

**Charlbury Surgery**  
T: 01608 811250  
**Hook Norton Hospital**  
T: 01608 730085

**ALL HNVG SURGERIES ARE OPEN, INCLUDING OUR CHARLBURY SURGERY.**

We still have a strict COVID-19 policy in place to protect staff and clients. The latest updates can be found on our website.

Our Farm & Equine Teams are both working and available for all your equine and livestock care from our Hook Norton Surgery.

We are here for you and all your animals. We look forward to seeing you soon.

**Moreton Branch**  
T: 01608 695305

**Deddington Surgery**  
T: 01869 337732

[www.hooknortonvets.co.uk](http://www.hooknortonvets.co.uk)  
**24-HOUR EMERGENCY SERVICE**



## AIRPORT TRANSFERS WITNEY SHUTTLE

**WE PROVIDE DIRECT  
TRANSFERS FROM  
CHARLBURY TO HEATHROW  
(and other airports & cruise  
terminals etc).**

**WE ARE PROFESSIONAL,  
FRIENDLY & EXTREMELY  
RELIABLE.**

**INFO@WITNEYSHUTTLE.COM  
01993 705993  
FREEPHONE: 0800 043 4633**

## Brian's Barber Shop

Formally Charlbury Barbers.

01608 810630

Senior citizens day every day!

Opening times:

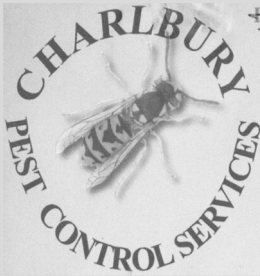
Mon. closed. Tues. 9-1 2-5.30. Wed. 10-1 2-6.30. Thurs. 9-1 2-5.30 Fri. 9-1 2-5.30.  
Sat. 7-1



New Miss Molly products now in stock  
Not just frames ~ what will you discover ?



Market St., Charlbury., OX7 3PL., 01608 811905  
www.cotswoldframes.co.uk - info@cotswoldframes.co.uk  
Please call us back a framing expert.



Are you  
troubled by:

**Rats  
Mice  
Moles  
Wasps etc ?**



Then please call

**07810 290218**

**Fully Qualified and Insured**

Thinking of  
selling your  
Jewellery?

**Mallams**  
1788



Mallams specialist  
Louise Dennis FGA DGA,  
is available to give **free**  
confidential valuations on  
any piece(s) you are considering  
selling at auction.

**Home visits also available**

Enquiries: 01865 241358 or  
louise.dennis@mallams.co.uk  
[www.mallams.co.uk](http://www.mallams.co.uk)



# CHARLBURY COMMUNITY DIRECTORY

Please note that it is the responsibility of each organisation listed in the Community Directory to notify any changes to the Editor

**Artweeks** - Wendy Clifford (01608 810006)

**All Together In Charlbury (ATIC)**

To request help (01993 776277). To contact management committee (07487 413892)

**Baptist Church** - Kay Colyer (01608 810107)  
*charlburybaptistchurch@gmail.com*

**Charlbury Amateur Dramatic Society (CADS)**

Helen Wright, Secretary  
*charlbury.drama@gmail.com*

*www.charlbury-drama.com*

**Charlbury Art Society (CAS)** Sec: Kati

Eidenbenz (01608 810911)

*secretary@charlburyarts.co.uk*

**Charlbury Beer Festival** - Nick Millea

*nick.millea@btinternet.com*

*www.charlburybeerfestival.org*

**Charlbury Beer & Wine Circle** - John Moore  
(01608 810700)

**Charlbury Bowls Club** - Shaun Morley  
*enquiries@charlburybowls.co.uk* (01993 868134)

**Charlbury Bridge Club**— Secretary Monica  
Wilkinson (01608 810560)

**Charlbury Canoe Club** - Hugh Belshaw

(01608 810130) *hughandjoan@uwclub.net*

**Charlbury Chronicle** - Susie Finch (01608

810861) *editor.chronicle@outlook.com*

**Charlbury Community Centre**—Daniela Jenkins  
(01608 811878)

**Charlbury Community Speedwatch** —  
*charlburycsw@gmail.com*

**Charlbury Cricket Club** - David Horne Vice

Chairman *dw3horne@gmail.com*

*www.charlburycricketclub.co.uk*

**Charlbury Day Centre** - Bob Tait (01608 810150)

**Charlbury & District Probus Club** Mike White

(07710 296814) *mike.ewhite7@gmail.com*

**Charlbury Green Hub** - Christine Elliott

(01608 811057) *www.charlburygreenhub.org.uk*

**Charlbury Garden Society**

*chairman@charlburygardensociety.org.uk*

**Charlbury Ladies Luncheon Club**—Gill Grason

(01608 810154) and Frances Canham (01608

811176)

**Charlbury Morris** - Peter Smith (01608 811007)

*peter@charlburymorris.org*

*www.charlburymorris.org*

**Charlbury Museum** - Curator—

*curator@charlburymuseum.org.uk*

**Charlbury Music Class** - Peter Fry (01993

359189)

**Charlbury Open Gardens** - Catherine Goyder

*csfgardens@charlburystreetfair.org*

**Charlbury Pioneer Country/Western Club**

(Ray & Margaret) (01993 831345)

**Charlbury Pre-School**—Laura Barwood

*laurambarwood@hotmail.co.uk* (01608 811200)

**Charlbury Royal British Legion** - Nick Potter

(01608 810388)

**Charlbury School** -Head (01608 810354)

*office.2100@charlbury.oxon.sch.uk*

*www.charlbury.oxon/digitalbrain.com*

**Charlbury School Association** -

*office.2100@charlbury.oxon.sch.uk*

**Charlbury Scout Group** - Cheryl Hornsby -  
*cheryl@redstonecomputers.co.uk*

**Charlbury Society** - Chairman, Nikki Rycroft  
*n.rycroft@doctors.org.uk*

**Charlbury Street Fair** - Chairman—John Dora  
(01608 811328) *jmdora@btinternet.com*

**Charlbury Tennis Club** - Mark Jarman (01608  
811692) *charlburytennis@hotmail.co.uk*

**Charlbury Town Council**—Roger Clarke, clerk  
(01608 810608) *charlburytc@btinternet.com*

**Charlbury Town Football** - Keith Claridge  
(01608 810201 or 07870 426707)

**Charlbury Town Youth Football Club** - James  
Ball (01608 810270) *jolliecat@btinternet.com*

**Charlbury Women's Institute** - President -  
Miriam Evans (01608 430807)

*charlburywi@oxfordshirewi.co.uk*

**ChOC Cinema** - Jackie Hague (01608  
810713)

**Corner House Community Bookshop**—Neil  
Pakenham-Walsh (01608 811899)

**Corner House and Memorial Hall** -Office (01608  
810879)

**Churches Together** - Rosalind Scott, (01608  
810562) *rosalind.scott@hotmail.co.uk*

**Cotswolds Voluntary Wardens** - Simon  
Walker (01608 811414) *simon.iets@btinternet.com*

**Dementia Friendly Charlbury**— Meryl Smith  
(01608 810192) *charlburydf@gmail.com*

**Friends Meeting House:** Sue Terry (01608  
811033) email: *sueeterry@btinternet.com*)

**Holiday Club**

*parishoffice@stmaryscharlbury.co.uk*

**Macmillan Cancer Care** - Liz & Bob Tait (01608  
810150)

**Methodist Chapel** - Sue Tokumine (01608  
810366) *suetok@hotmail.com*

**Mind in Chipping Norton** (Mental Health  
Support) (01608 645296)

**Riverside Festival** - Andy Pickard (01608  
810635) *admin@riversidefestival.charlbury.com*

*www.riversidefestival.charlbury.com*

**St Marys C of E Church** Rev Sally Welch  
(01608 810230)

**St Teresa's RC Church** Fr Clive Dytor (07484  
158642)

**Sustainable Charlbury** - Liz Reason (01608  
811212)

**The Bell Inn** (01608 810278)

**The Bull Inn** (01608 810689)

**Thomas Gifford Trust**- Chris Potts (01608

811878) *chris.potts@blakemorgan.co.uk*

**United Nations Association (West**

**Oxfordshire)** – Neil Pakenham-Walsh (01608

811338)

**Walkers are Welcome** Paul Jackson 01608

811370 *pauljackson1@outlook.com*

**Wilderness Festival**—*www.wildernessfestival.com*

**Wychway Border Morris** - Teresa Duester

(01608 810934)

**www.charlbury.info** - Richard Fairhurst



## Charlbury's Police Community Support Officer

**C9837 Wesley Smith**

To speak to us about any concerns you may have:

**call 101** if it's a non-emergency

**or 999** in an emergency

[www.thamesvalley.police.uk](http://www.thamesvalley.police.uk)

also sign up for free crime alerts

[www.thamesvalleyalert.co.uk](http://www.thamesvalleyalert.co.uk)

## CHRONICLE ADVERTS

Advertise your business in the **Charlbury Chronicle** and reach over 1550 residences.

To place an advert please ring Graham Jowett on 01608 810666 or email:  
[gjowettchronicle@btinternet.com](mailto:gjowettchronicle@btinternet.com)

## MAILING LIST

We have a mailing list for people wishing to receive the *Charlbury Chronicle* who no longer live in the town. **Now £4.50 per four issues; £6 per four issues for overseas subscribers.** Large-print £2.50 for **each** copy. If you wish to be put on the mailing list, please contact Dawn Colvin (address in right hand panel).

Please note that **ALL** cheques for advertising, mailing list or donations should be made payable to *The Charlbury Chronicle* and should be sent to The Treasurer, Graham Jowett, whose address is in the panel on the right.

## CHARLBURY CHRONICLE CONTACTS

Editor: Susie Finch

tel: 01608 810861

e-mail: [editor.chronicle@outlook.com](mailto:editor.chronicle@outlook.com)

Assisted by:

Julia Caston: 01608 810240

Barbara Allison: 01608 811262  
and others

Treasurer & Advertising:

Graham Jowett,

2 Lees Heights, Charlbury OX7 3EZ

tel: 01608 810666

[gjowettchronicle@btinternet.com](mailto:gjowettchronicle@btinternet.com)

Mailing List: Dawn Colvin

3 Enstone Road, Charlbury OX7 3QR

tel: 01608 810545

Distribution:

Brian and Shelagh: 01608 819091

Robert Caston: 01608 810240

*And thanks to Nikki Frankum for proof-reading this issue of the Chronicle.*

The **Charlbury Chronicle** is produced and distributed free to every household in Charlbury. All those involved in its preparation work on a voluntary basis.

The **Charlbury Chronicle** aims to be impartial and independent and cannot be held responsible for any of the views expressed in its pages. The editor reserves the right to alter or adapt any articles submitted for publication although hoping to discuss any major changes with the authors first.

The **Charlbury Chronicle** acknowledges the support of our advertisers and individuals who generously contribute to its funds and hope that any reader using their services will mention the **Charlbury Chronicle**.

Printed by

KMS Litho Ltd, Hook Norton, OX15 5LS

01608 737 640

[enquiries@kmslitho.co.uk](mailto:enquiries@kmslitho.co.uk)

[www.kmslitho.co.uk](http://www.kmslitho.co.uk)

# Specialist Private Client Lawyers & Tax Professionals

Trusted advisors to individuals and their families

*“An outstanding niche private client firm...its practitioners are recommended as experts in their field, providing high-quality advice...its clients service is second to none and every client is valued equally and treated with sensitivity and genuine compassion.”*



We can assist you with specialist legal advice on Wills, inheritance tax planning, powers of attorney, helping with probate and generally protecting your assets. We also help protect the vulnerable or elderly.

Our tax specialists are also here to help with your personal tax compliance, including preparing personal tax returns and offering guidance on HMRC correspondence. They can also advise you on tax planning on the sale/gift of assets, including the new reporting of capital gains on the sale of private residences.

Dealing with your own affairs and getting them in order can appear daunting. We're here to make life easier. Do pick up the phone or email us and we would be happy to have a free, no-obligation initial chat with you. We can meet on video call or in person when safe to do so.



Anna BURNSIDE PARTNER  
anna.burnside@theburnsidepartnership.com

Jacqui BIRRELL TAX DIRECTOR  
jacqui.birrell@theburnsidepartnership.com

For further information, please contact:  
[info@theburnsidepartnership.com](mailto:info@theburnsidepartnership.com)



The Carpenters' Workshop, Blenheim Palace, Sawmills, Combe, Oxfordshire OX29 9ET  
T 01865 960 781 E [info@theburnsidepartnership.com](mailto:info@theburnsidepartnership.com) W [www.theburnsidepartnership.com](http://www.theburnsidepartnership.com)

FOLLOW US ON:



## Stonesfield Primary School

Learning together to achieve our best.



Looking for a friendly, inclusive, local school for your child?  
Stonesfield Primary School has places in all year groups - we would love to show you around.



To arrange a tour with the headteacher, Mr Ben Trevail, please contact the school office.

Tel: 01993 891687

Office email: [office.2353@stonesfield.oxon.sch.uk](mailto:office.2353@stonesfield.oxon.sch.uk)

Headteacher email: [head.2353@stonesfield.oxon.sch.uk](mailto:head.2353@stonesfield.oxon.sch.uk)

# SHAW & Co.

Providing legal advice in London and Oxfordshire for 35 years

1 Church Street

Charlbury

Oxfordshire OX7 3PW

Telephone 01608 810100

andrew@shawandcompany.co.uk

**Wills, Probate and Administration**

**Powers of Attorney**

**Executor & Trustee Services - Inheritance Tax Planning**

**Property - House and Flat Conveyancing**

**Commercial Leases and Landlord and Tenant matters**

Commissioners for Oaths

*"...probably the best and most approachable lawyers I have ever used....."*

10 Market Place  
Chipping Norton,  
Oxon OX7 5NA  
Tel: 01608 644808  
Fax 01608 644809



1 Church Street  
Charlbury  
Oxon OX7 3PW  
Tel: 01608 811146  
Fax 01608 810050

22 The Parade  
Oxford Road  
Kidlington,  
Oxford OX5 3DB

[www.fairfaxandcompany.co.uk](http://www.fairfaxandcompany.co.uk)  
[charlbury@fairfaxandcompany.co.uk](mailto:charlbury@fairfaxandcompany.co.uk)

15 High Street  
Bloxham  
Banbury  
Oxon OX15 4LT

**Free Valuations No Sale—No Fee**  
**Specialist Lettings Department**  
**Independent Mortgage Advice**  
**Low Cost Buildings Insurance**

**Fairfax & Co. offer unbeatable value and expert property advice from professionals**