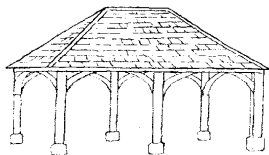


The Charlbury Chronicle



Volume 17 Number 4

December 2013

With Christmas round again, it's time to thank all those good people who help with the Chronicle in one way or another. There wouldn't be a Chronicle without Jack Potten who organises the advertising for us - you all receive your Chronicle free on your doorstep and it's all because our many advertisements pay for the costs of printing. The band of volunteers who deliver the 1500 or so copies, those who write articles for us, those who ensure that the various clubs and societies send in their copy and so on have been faithful helpers over the seventeen years since the Chronicle started its life. I'm also happy to mention Brian Murray and Shelagh Scott who have very kindly agreed to oversee the arrangements for counting and sorting the Chronicles and getting them out to those who do the deliveries. A hearty Thank You to everyone!

Please will those involved check their details in the Community Directory on page 39. Due to the problems with changing my computer set-up it may be that some details have disappeared or are out of date. Please let me know in time for the March Chronicle.

There are some good articles in this issue - Vicky Buser's very encouraging report on Charlbury Primary School; an update on how plans are being made to keep our Library going; Richard Fairhurst's handy bus & train timetable; Jon Carpenter's thoughts on his forthcoming retirement; Andrew Lawson's report on the Church Street swifts; and then there's the Charlbury resident who must be the only university-trained bus driver to have won the Bus Driver of the Year Award! Please also note that we have quite a few new advertisements in this issue. Bearing in mind what has been said above about the importance of advertising, do please check them all out and be sure to mention the Chronicle if you use their services.

Please make a note that Charlbury's Late Night Shopping this year is on Friday, December 13th

Here's wishing you all a very Happy Christmas and a Prosperous New Year

Lynette Murphy

***Deadline for copy for the March Chronicle is
February 1st 2014***



Market St – Charlbury – Oxon – Ox7 3PL
01608 811805

Christmas time at Cotswold Frames
It always brings good cheer
We've loads of gifts to choose from
At this special time of year

There's cracker cards & Christmas labels
Stunning glass baubles for trees & tables
Beautiful candles to adorn any room
Silver jewellery to make your heart swoon

Leather wallets and satchels too
Travel wash bags for those that do
Journals for writing with our glorious pens
The list it goes on and never ends

Soaps and incense with pleasant smells
Musical crackers that now come with bells
Stunning dried flowers all ready to go
And beautiful cards to say hello

We've dog bandanas and tea towels too
Beautiful glass plates you can see right through
Cuddly toys the list still goes on
Please do be careful you don't burst into song

So this year please try to be different
As shops that are local are just as efficient
Forget all about that internet shopping
We're right on your doorstep so please do just pop in.

Merry Christmas!

© T.K. Widdows 2013



The Trustees have made good progress with the County Council regarding the funding agreement that will formalise the way their money will be drawn down to fund the community building. We have a regular dialogue with the head of property services at OCC and will be meeting their property advisors soon, to move things forward.

We have participated in the Town Council Community Led Plan process which has been useful in firming up what balance of facilities best meets the Town's needs and the Charity's objectives. We are currently preparing a design brief that will form the basis of the instruction to an Architect. This will happen as soon as the County agreement is in place.

The Trustees have reviewed the skills that the Trust will need to undertake the development of the Spendlove site and the future management of the facilities.

We will work with other groups to look at co-ordinated management, bookings and maintenance arrangements in the future. We are also looking at alternative funding that may replace the need for some or all of the enabling development.

Finally, Margie Glasgow will take over as Chair of the Trust from 1st November. I will be her deputy. This will enable me to concentrate on the development whilst Margie focuses on funding and overall leadership of the Trust.

*Ian Cox, Trustee
Thomas Gifford Trust*



FIREWOOD

Quality Seasoned

Hardwood Logs

1 Cubic Metre £70

2 Cubic Metres £125

4 Cubic Metre £220

Softwood also available

Kindling & Stacking Service

Order Online:

www.jagtimber.co.uk

Tel: 01993 868001

Need Computer Training?



We come to you:
learn in the comfort of
your own home!

One-to-One training:
learn faster with our
tutors!

**Problems, fixes &
installation too!**

**Learn new skills and
keep in touch with
friends & family!**

 **SILVERTRAINING**

Call now on 0845 862 0495

NEWS FROM NEWS AND THINGS

We have been busy at News & Things over the past month or so. Our new manageress, Renna, would like to invite you to our newly improved, extended and equipped cafe.

Renna will be able to offer a wide variety of sandwiches made to order, to eat in or take away, using only the finest ingredients and freshly baked bread and baguettes. We also bake our Danish pastries and hot food fresh on the premises, on the day.

We will, of course, be serving our excellent, freshly ground coffees which will also be available for take away or to be enjoyed in our cafe which is air-conditioned and equipped with free wifi. As the colder weather begins to draw in, we will be offering exciting new hot lines in the cafe to keep you warm.

We have increased the number of covers in the cafe to allow our customers to relax in comfort. Children with pushchairs are welcome: a children's menu is offered with prices to match. Cyclists are also welcome to use our secure garden to "park" their bikes. We will also be introducing locally sourced cheeses and meats not only for use in the cafe but for sale.

Along with delicatessen products, we will be stocking locally sourced ales and wine for the more discerning customer. Don't forget, we still have a very large selection of cards and stationery along with penny sweets and confectionery to satisfy even the sweetest tooth!

We look forward to seeing you for a coffee and chat at your local newsagent and cafe!



NEWS FROM THE CORNBURY PARK TEAM

Every August Cornbury Park plays host to the award-winning Wilderness, a celebration of the arts and outdoors, and 2013's four day festival was the most ambitious and popular to date.

Many of Charlbury's residents love Wilderness and take advantage of the discounted tickets the organisers release for locals. We know that the town's shops and businesses value the increased trade, and that local charities are continuing to benefit from the Festival. In 2013 ROSY (Respite Care for Oxfordshire's Sick Youngsters) raised their profile and took some £500 at the Festival. The Thomas Gifford Trust once again raised funds by allowing Wilderness to place an advertising board on the Playing Close. The Charlbury Community Centre Appeal has again benefitted from a 'tick box' inviting online ticket buyers to donate to the fund, this time generating an overall donation of nearly £900. And Charlbury Pre-School which relies on festival fundraisers to stay open, made over £3,000 with Ed Bradbury's legendary 'Pig Roast'.

Discounted tickets for Charlbury residents for Wilderness 2014 which runs from 7-10 August will be on sale from 12 November. In order that Charlbury residents have priority access to these special tickets, they will be available exclusively from Charlbury Post Office until 28 February 2014 before going on wider release. Proof of address is required and tickets are restricted to a maximum of four per household. For further details, see www.wildernessfestival.com

As usual, the residents of Charlbury are welcome to walk in the Deer Park at Cornbury on New Year's Day between 9am and 4pm. Access is via the main North Lodge entrance. Walkers are requested not to park on the drive at North Lodge and to remain within the boundaries of the Park. Sorry, but dogs, even those on leads are not allowed in the park as they upset the deer.

Finally, may we wish you all a Merry Christmas and a Very Happy 2014.

Follow us on Twitter @CornburyPark and at Facebook.com/CornburyPark, or get in touch by emailing us at: estate@cpark.co.uk, phoning on 01608 811 276, or signing up for alerts at www.cornburypark.co.uk

GOOD GOURMET

Stonesfield's catering business now runs a regular "at home restaurant" to compliment our other catering services. Tables of 2 to 18 are available with changing menus from 3 to 5 courses in the relaxing surroundings of our home in Stonesfield. BYO (no corkage charge).

Contact Jaimie and Jacqui on 01993

898614 email info@goodgourmet.co.uk

CORNER HOUSE

We have already had a reasonable take-up for Corner House Saturday morning coffee dates in 2014, but in theory there are still up to 30 fund-raising opportunities slots available, so put your bookings in soon.

Steve Andrews,
Chairman
811212

Shaun Guard TV AERIAL SERVICES

 **Poor Reception Solved** - For Analogue and Digital TV

 **TV and Radio Aerials** - Repair and Installation

 **Extra TV Points** - For Aerial and Sky

 **Sky TV** - Also Foreign Language Satellite

Call **Witney** 01993 608118

...now a part of  **OXFORD AERIALS**

BOOKS

*Most books ordered overnight
Almost all books 10% off RRP*

DVDs

*Over 300 films in stock from
£3.99*

plus thousands to order

MAPS

Your local and holiday maps

Cards by local artists, games,
diaries and calendars

Evenlode Books
Market Street, Charlbury

01608 819117

jon@evenlodebooks.co.uk

www.evenlodebooks.co.uk

NEWS & THINGS

Sheep Street, Charlbury

**Don't forget News & Things has a large array of cards,
stationery, newspapers and magazines,
as well as offering a wide selection of soft drinks and alcohol**

**With Christmas approaching why not come and see our large range
of wrapping paper, Christmas cards, decorations and
luxury crackers**

**Also, confectionery and the finest chocolates to
satisfy the sweetest tooth!**

WE LOOK FORWARD TO YOUR CUSTOM



CHARLBURY MUSEUM NEWS

The Museum closed for the winter at the end of September, after a successful year that saw over 300 visitors, including groups such as Chipping Norton Stroke Club, The Trefoil Guild, the Beavers, and we are soon to have a visit from the Oxfordshire Local History Society. We were pleased to welcome nearly 60 visitors on Street Fair day. The museum will be closed until April, except for the Christmas shopping evenings in December, when entry will be free. Museum publications and other items will be on sale. As always, we are happy to open up if anyone would like to visit during the winter.

Those who visited the Museum in September will have seen that we now have an electronic screen to put on a rolling display of some of the pictures in our collection. These displays will run continuously when the Museum is open, and should add a lot to visitors' enjoyment. We hope to have a display next year on Larcum Kendal, ship's chronometer and watchmaker, who was born in Charlbury. The folders of pictures will remain in the Museum to help those who want to look at specific items at their leisure. We were able to buy the screen thanks to a Community Activities Grant of £200 from West Oxfordshire District Council, and we are very grateful to them for their continuing support. We have also gratefully received a grant from the Town Council, which helped us to get memory sticks, and to adapt a video history of Charlbury for use with the screen. We have also been able to replace old heaters with more efficient, eco-friendly ones, and to purchase materials to enhance our displays.

Next year, we shall take part in the commemoration of the start of the First World War by arranging a special exhibition on 'Charlbury in 1914', with special reference to the War, and how our town was affected by it. We would like very much to hear from anyone who has photographs or other wartime mementoes, who would be ready to lend them (or allow us to scan them) for the exhibition. Please contact the Curator, Celia Faulkner, on 810656 or talk to any committee member. *Charles Tyzack*

OXFORDSHIRE COUNTY SCOUT COUNCIL ROLL OF HONOUR 2012/2013

Chief Scout Gold Award: Arianne Bennett, 1st Charlbury Scouts

Chief Scout Bronze Award: West Oxfordshire District -

Louis Williams, James Blyth, Alex Morris, Jack Loweth, Arlo Braund

Congratulations and Well Done !

ANDREW LAWSON ON THE CHURCH STREET SWIFTS

If you've ever waited for the bus in Church Street in high summer, you may have noticed the black arrow-shaped birds swooping overhead. These are swifts, which fly in close formation on summer evenings, making their excited screaming calls which are such a feature of high summer.

We have a good population in Charlbury and growing, but in Britain as a whole swift numbers have declined 40% in the last 20 years. The reason may be that they depend on human dwellings for their nesting sites, and our home improvements tend to eliminate the holes they need to access our roofs and walls to make their simple nests.

You can help swifts by providing nesting boxes for them under the eaves of your roof. When we restored our roof at Gothic House, and scaffolding was in place, we asked local builder, John Crockford, to make holes for swifts in our thick stone walls. He created 16 nesting spaces in the gables of the house. The next task was to attract the swifts, and the following summer sound engineer Nick Parker rigged up a sound system on which we played a constant loop of swift calls. This was enough to attract the birds to the house, and the following year we had our first nesting pair. They have increased to eight pairs in 2013. The thrilling presence of the swifts in Church Street has persuaded neighbours to follow suit and make holes for them high on their houses.

Swifts like to nest at least 16 feet above the ground. The reason for this is that when the young birds make their first flight from the nest, they must not fall to the ground, because they cannot take off again. Young swifts remain airborne, without touching the ground or any kind of perch, for at least two years after leaving the nest. They fly to Africa and back, feeding and sleeping on the wing. Only when it is time for them to breed will they find a site in one of our houses. And then they only honour us with their visits for three summer months of the year.

If you would like to help the Charlbury swifts please contact Andrew Lawson on 01608 811483. See also www.swiftconservation.com

NEWS FROM CHARLBURY PRIMARY SCHOOL

This academic year the school welcomes Tim Gregory, who is now teaching Year 1. Mr Gregory completed his teacher training at the school last year, and we're delighted that he accepted a full time teaching position. He brings with him a range of talents: in addition to his excellent teaching abilities and warm manner with the children, he is also a qualified football, swimming and tennis coach.

We also welcome our new Catering Manager, Claire Jordan, and Catering Assistant, Jane Townsend. At the beginning of term the school was able to switch its lunch provision to a new Oxfordshire-based company (The School Lunch Company) in order to offer better quality lunches using ingredients that are sourced locally wherever possible. Callow Farm butchers in Stonesfield now supply the meat, and Proctors in Bicester supply the fruit and vegetables. This approach is much more in line with the school's eco and healthy schools philosophy. Pupils now have a voice about their lunches too: representatives from each class help the catering company to devise healthy menus that also match the children's taste buds.

The school continues to expand its range of well-attended after-school clubs, which this year include Archery, Art, and Astronomy (all the As!). In total there are thirteen different activities on offer, from breakdancing to languages to cooking and gardening. You may have enjoyed seeing Tina's Dancers perform 'Charlie and the Chocolate Factory' at this year's Street Fair. This is just one example of the positive impact of our Extended Schools provision, which ensures there is always a happy atmosphere in school whatever the time of day.

Following on from last year's successful trip to see the play 'War Horse', children from Years 5 and 6 (and some lucky parents) recently enjoyed another opportunity to experience a theatre production in London's West End, this time to see Matilda the musical. We would like to thank Miss Franklin for organising these wonderful trips.

The school was also very pleased with last year's academic results, which continue to reflect the school's increased standards for above average achievement.

Finally, we are always looking for local residents to join our Knowledge Well scheme so that we can find ways to tie-in your particular skills, knowledge and experience with national curriculum subjects to broaden the children's education. If you would like to contribute to this scheme, we would love to hear from you. Please contact the school on 01608 810354 or via our website at <http://www.charlbury.oxon.sch.uk>.

Vicky Buser, Parent Governor

PELLMANS

Your Local Solicitors

- **Business and Employment Law**
Contracts, Legal Compliance
and Disputes
- **Property**
Residential, Commercial
and Agricultural
- **Divorce**
Finances, Children and
Cohabitation Disputes
- **Wills, Probate and Trusts**
Tax Planning and Lasting
Powers of Attorney

01865 884400

www.pellmans.co.uk

1 Abbey Street, Eynsham, Oxford OX29 4TB

Home visits and evening appointments available

NEW SHOP OPENS IN SHEEP STREET

Shabby Sheep is a newly opened interiors business based at 37 Sheep Street. **Sarah Billington** says her shop sets the scene for the products she likes to sell which are a mix of old 'one of a kind pieces' that she finds at auctions, hand knitted items and new and interesting pieces with a bit of an edge. Everything she sells she tries to put together in a creative way, she says, that allows customers to have the confidence to think 'outside the box' when furnishing their own homes.

Opening hours are Monday to
Saturday 10am-4pm.

CHRONICLE SMALL ADS

Carpet and Upholstery cleaning by
GRIMEBUSTERS, your local
Specialists. Quality work,
Unbeatable rates
01993 868 924

To place a small ad please ring
Jack Potten on 01608 810991

We don't have a goat in the garden

...But we try, not very successfully, to live with an awareness that we are fundamentally dependent on other people and intimately part of the natural world. The example of St Francis and the Franciscan movement has been part of our journey for many a year. Joy in creation and working for justice and peace are part of it all.

We recognise that our human interconnectedness has all sorts of implications, and that much of what we take for granted – including our food and clothing – can involve the exploitation of cheap labour and overuse of the earth's limited resources. We attempt to be “ethical consumers” without getting too hung up about it! Angela haunts charity shops a lot, where great bargains are to be had.

Of course everything is a compromise, and you have to start where you are. A few years ago we changed our heating boiler from oil to gas as the only practicable option, a decision we'd take now with greater foreboding given the likelihood that fracking will go ahead, maintaining our addiction to cheap fossil fuels. That said, our main source of heat in the winter is our lovely little wood-burner, slotted into a standard 1960s fireplace.

Over the years we have gradually moved towards a largely vegetarian diet – not primarily for ideological reasons, but because neither of us likes too much meat. The weekly organic veg box forms the core of our meals, supplemented from the Co-op or Sainsburys. When food shopping, we try to buy UK produce and to avoid “air miles”. We're not obsessive about this – bananas and pineapples don't flourish in Britain, after all. But blackberries from Guatemala, seen this summer on sale – no.

One of the advantages of retiring, growing older and having less income is that lifestyle tends naturally to become more sustainable. With no daily commute, car use has dropped dramatically. With less time-pressure, Duncan has realised that buses exist – and they're free. Angela is trying, with patchy success, to limit the number of new books she buys and to use the library. Holidays in this country don't involve flying, and neither of us much like too much hot weather or sunshine anyway.

Having more time can mean a more thoughtful and creative approach to lots of things. We usually use environmentally-friendly paint now, of which there are many suppliers. It need not be much more expensive than traditional paint and it's lovely not to have a smell hanging about. Mending what's broken rather than buying new has always been a source of pleasure, and recently the re-use of a door salvaged from a skip provided a great deal of satisfaction (slightly tempered by discovering on getting it home that it was 100mm too short).

Both of us have a great love of the countryside and the changing seasons which is one of the reasons that we came to Charlbury in the first place. We want so much for our grandchildren, in their old age, to be living in a world which they can enjoy as we do.

Angela and Duncan Forbes
Charlbury Green Hub



**FRANKE HEALTH
CLINIC ON THE GREEN**
BLETCHINGDON

01869 351345
WWW.CLINICONTHEGREEN.COM

SPECIALISTS IN:
OSTEOPATHY
SPORTING PERFORMANCE
CHILDRENS & CRANIAL OSTEOPATHY
MASSAGE

**"THIS GRADE I FULLY RESTORED
STONE AND TIMBER BUILDING IS CALM
AND SPACIOUS, LENDING ITSELF WELL
TO ALL OF THE THERAPIES WE OFFER.**



**BOOK TODAY TO MOVE WITH EASE &
ENERGY."**

SUNDAY OSTEOPATHY
GIFT VOUCHERS
INDIVIDUAL PILATES (FOR 1 OR 2)



Independent Mortgage Advice

All types of Mortgages arranged

Specialists in Affordable Housing Mortgages & Re-mortgages,

We make searching the mortgage market easy

Call now for independent advice to suit your individual needs from
our highly qualified experts.

Head Office: 01494 817 329

Charlbury Office: Tony Horn 07980 684 224

**Your property may be repossessed if you do not keep up
repayments on your mortgage.**

**For mortgages we can be paid by commission, or a fee of usually
£350 or a combination of both.**

Can you help our library?

Late in 2010 we heard that Oxfordshire County Council was proposing to make savings by closing 20 libraries, including ours here in Charlbury. After a vigorous campaign by a wide section of the local population, the Library Service was allowed to keep all the county libraries open but with deep cuts to the number of staff employed. The shortfall in staffing is to be made up by volunteers.

In Charlbury we shall be losing half our staff hours by April 2015. By then it is hoped a team of volunteers will be in place to keep the library open for the same hours that it is open now. The Friends of Charlbury Library have been asked to help recruit volunteers. Volunteers will be needed for a variety of activities, not only being in the library and meeting borrowers during opening hours. For example, a co-ordinator will be needed to organise the rota or better still a pair of people who can work together and cover each other for holidays or illness. There will be other jobs to do behind the scenes as well. A recruitment day is being arranged on 27 February next year in the Corner House, when representatives of the Library Service will be available to answer questions. Look out for more information in the February Leaflet. We will also be writing to those who expressed an interest in helping when we first heard about plans to involve volunteers back in 2011.

But there is no need to wait until February if you are willing and able to support our library. We will be delighted to hear from you and talk about the possibilities for becoming involved. Please get in touch if you would like more information. You can email us or leave your name and contact details in the library and we will get back to you.

Jill Judson – Chair of the Friends of Charlbury Library

j.judson257@btinternet.com

Rosalind Scott – Secretary of the Friends of Charlbury Library

rosalind.scott@hotmail.co.uk

CHARLBURY MEALS ON WHEELS

**Meals on Wheels prepares and delivers meals on
Tuesdays to residents of
Charlbury, Chadlington and Stonesfield**

Meals cost £2 delivered

VOLUNTEERS ARE NEEDED

Please ring Marjorie Glasgow on 01608 810161 or
Jan Griffiths on 01608 810440 if you can help. We are also accepting
names for new recipients for our waiting list.

Please ring Marjorie



CHARLBURY TOWN COUNCIL REPORT, No. 69

By Councillor Jim Holah

The Town Council has been busy this year with, amongst other things, considering the issues arising from the Community Led Plan (CLP) including traffic & parking concerns, the future use of Charlbury facilities and issues raised by residents, such as keeping the streets clean. All Town Council meetings are open to the public so you are welcome to attend to hear the debate and reports from your Town, District & County Councillors.

Charlbury Street Fair 2013, we send our congratulations to the organisers of the Street Fair following the successful event in September, making a profit in the order of £8,000, subject to audit. All funds raised go to the maintenance and improvement of the Corner House & war Memorial Hall.

Remembrance Sunday: Cllr Peter Kenrick laid the Council's wreath at the War memorial in St Mary's Church on Remembrance Sunday, on 10th November.

WODC Waste & Recycling Collection Calendar – 2013/14 (1st October 2013 - 30th Sept 2014): Although this has not been provided to individual addresses, copies can be requested by telephoning 01993 861000 or collected from the WODC One Stop Shop in Welch Way, Witney and the Guildhall, Chipping Norton. You can also download it from www.westoxon.gov.uk/waste

Councillor Surgeries: continue to be held in the Corner House 10am – 12pm on the first Saturday of alternate months. The next dates are 7th Dec. 2013, 1st Feb & 5th April 2014. The Council is still considering alternative venues for this important opportunity for local residents to discuss issues with Town Councillors. If you have an idea for a different venue, please contact the Town Clerk to make your suggestion.

Overhanging branches to pavements and weed growth: the lush growth of the summer has resulted in lots of pavements being restricted by your hedges and trees, so please take a few minutes to check your boundary and cut back overhanging branches and growth, making pavements easier to use. You may also find the time to sweep and remove the fallen leaves from the pavement outside your home, preventing it from becoming slippery, especially for older people, in wet weather.

Dog fouling: in a joint approach with the Neighbourhood Action Group, volunteers have started to highlight dog fouling using a chalk based, orange coloured spray. This is partly as a warning to other users of footpaths, but also to highlight the lack of consideration from some dog owners for their fellow residents. For advice on why it's a problem, how best to deal with it and what the rules mean to you, go to the WODC site, <http://www.westoxon.gov.uk/environment/Streetcleansing.cfm>.

Snow & Ice: are forecast early this year and, in response to concerns raised with the Council last year, an additional five salt bins have been provided around Charlbury. We have attempted to site these to improve coverage across the town, plus we are taking delivery of additional salt in 10Kg bags that can be distributed around the town if the snowfall is heavy. The Council is also considering the development of a Community Emergency Plan that may assist in responding to cold weather, fire & flooding. Look out for more details as this idea is progressed.

The Permissive Paths on Wigwell Nature Reserve and Nine Acres Recreation Ground will be closed all day on Thursday 2nd January 2014. This is a legal requirement. Residents with gates opening on to Oxpens Allotments, Nine Acres Recreation Ground and Wigwell are reminded that this does not create a Right of Way.

Community Led Plan: this is progressing well, with significant responses from residents on a huge range of issues and many of you coming to meet the team at events across Charlbury and through the website. See the report elsewhere in this edition of the Chronicle for more details.

How do we keep you in touch with Council activity and issues?: The Town Council has three dedicated Notice Boards, at the Corner House, next to the Enstone Rd. bus shelter and opposite Five-ways Store. Meeting dates, agendas and other important notices are always publicised. We also make information available on the Town Council website and place minutes and other documents in the Library. Members of the public may address the Town Council for up to 5 minutes before a full Council meeting by arrangement with the Clerk.

Community-Led Plan, a work in progress.....

by Councillor Jim Holah

Thank you to all residents who have taken the time and trouble to contribute to the Community-Led Plan (CLP) consultation activity during the year. We have tried to get your responses through postcard collections, at our four open events (Memorial Hall in July, Street Fair and two further smaller events in October at the Bowls Club & Fire Station), and the Charlbury website (and you can still do this). Our thanks also go to the Committee at the Bowls Club and Deb Lamb at the Fire Station who made the facilities available at no cost in support of the community.

A short report on progress is on the Community Led Plan page of the Charlbury website..

The aim of this report is to provide you with a summary of all of the issues raised, by grouping together similar themes as a basic way of sifting all of your comments. There is a lot of agreement on some issues, as well as a lot of contentious and opposing thoughts. Some people have said to me that this is all "pie in the sky" or "a wish list" that can't be delivered. **The reality is that we have simply asked for your views and reported these, with no editing or favouritism, but as a way of generating debate about the future of Charlbury.**

We are working with Oxfordshire Rural Community Council to support us in developing these ideas and views into survey that will be sent to all residents sometime in spring 2014. The aim of this will be to achieve a view on issues (such as parking or traffic management) that can then be used to develop solutions with those responsible for delivery of services.

The CLP Advisory Group consists of a group of resident volunteers, some of whom are Town Councillors, who have no direct power to deliver potential solutions. Many of the issues are also outside the authority of the Town Council, resting with District and County Council or independent Charities or Trustees, such as The Corner House or Thomas Gifford Trust for instance.

This is a long term project, not an operational management plan, although we do hope to identify "quick wins" suggested by residents and will report on these as soon as we can. Some of the solutions may have to be planned well in advance to achieve funding or to get the ideas accepted by other organisations or Councils.

In addition to this we were charged with reviewing the current facilities that exist in the Town for all sorts of recreation, sport, drama, meetings, along with a range of assets that exist in Charlbury. We sent a questionnaire to organisation that use these facilities to gather their views and presented these to a workshop session in October. At this workshop those responsible for the management and development of the facilities agreed to discuss their plans and consider ways to work more effectively together for the benefit of all residents. By the time this edition is published, we hope to have an update available for the website.

Look out for news of more workshops on key issues between January & March 2014 and get prepared to look at ideas for the future of Charlbury, it's your views we are reflecting.

If you are interested in getting involved with the CLP Advisory Group please contact me on 810620 or

jimh@charlburytowncouncil.co.uk.



We wish you all a Merry Christmas and a Happy New Year



Relax, unwind, read the papers, catch up with friends and colleagues and enjoy some delicious home-made cake along with a steaming cup of Fair Trade tea or coffee at the

Font Cafe
St. Mary's Church,
Charlbury
9.15 to 11.30am
Every Thursday

For smaller children we provide a play area with toys.
There is also a **Traidcraft** stall selling a range of fairly traded foods, crafts and cards.

Turn Down your Thermostat!

Every degree lower you programme in the winter or higher in the summer

is a **10 per cent decrease** on your energy bill

CHARLBURY FARMERS' MARKET 2013 **on The Playing Close between 9am and 1pm on** **Saturday, December 14th 2013**

Charlbury Farmers' Market is administered by Thames Valley Farmers' Market Co-operative Ltd. The Market is organised by Nick Potter, Roger Watts and Geoff Burroughs. The contact address is: Lancut House, Lyneham Road, Milton-u-Wychwood, OX7 6LW. Tel 0784 328 7091 Email rogerw@bfocus.co.uk

CHARLBURY MAN BEATS 104 DRIVERS TO BECOME BUS DRIVER OF THE YEAR

As reported in the Witney Gazette in September, Charlbury resident Gordon Cutting won the national Bus Driver of the Year contest in competition with 104 other drivers . He has been driving passengers around Oxfordshire for 20 years and since 2004 has been working for Stagecoach on the S3 service between Oxford and Chipping Norton. Before that he worked for Worths Coaches in Enstone and Thames Transit before joining Stagecoach.

Gordon, who lives at Ticknell Piece Road, has a most interesting history - he spent years at university studying science and graduated with a degree in physics and astrophysics from Birmingham University in 1992.

Oxford Lime Mortar

Repointing - Plastering



Specialist repairs to older buildings
using traditional lime products

JOHN GUEST
01865 373273 / 07788 577351
www.olmuk.com

Carolyn

Mobile Hairdresser

**London trained,
30 years experience**

Tel Number
01608 238394

CLUBS, GROUPS, SOCIETIES

THE CHARLBURY SOCIETY: Standing-room only

With 90 people in the audience, it was standing-room only for late-comers at the first of the Charlbury Society's new season of meetings, held in the Memorial Hall in October. And they weren't disappointed, as they heard Richard Buckley of University of Leicester Archaeological Services give an enthralling presentation on the discovery in September last year of the remains of King Richard III – "the king under the car-park". Since then, the Society's members and visitors alike have been brought a little closer to home with Martin Parson's talk on evacuees in North Oxfordshire during the Second World War, before the scene moves eastwards to Russia for our December meeting. With her new book recently published, local author Catherine Merridale will be guiding us through the history of Moscow's most prominent landmark – the Kremlin. Now that the new season's talks are well under way, the Society is looking ahead to next summer, when we are planning a visit to Wrest Park, near Luton. Given the distance from here, the trip will be by coach, so please watch out for more details on the Charlbury website in the new year. We are also making progress with organising the unveiling ceremony for the Blue Plaque for Larcum Kendall, the 18th Century clock- and watch-maker who grew up in Charlbury. We are provisionally looking at a date in early May for this, with the Plaque to be installed on the front wall of the Post Office. Once again, please remember that the Society is here for the benefit of everyone in town, and that all of our talks are open to members and visitors alike. We look forward to seeing you soon.

Simon Walker, Chairman

CHARLBURY CRICKET CLUB

The 2013 season has been one of the best in recent years, with some outstanding personal and team performances, all duly recognised at the Club's end-of-season presentation evening. Our 1st team finished fourth in the top division of the Oxfordshire Cricket Association, with the 2nds coming sixth in division four and the 'development' 3rd team—a springboard into senior cricket for our young players—fourth in division ten. There was hardly any talk this summer of teams fighting to avoid relegation! In addition, the women's team clinched 3rd spot in the Midlands East division one. Charlbury has rarely been short of good bowlers, so attention in training this year focused on improving our batting. And it paid off, with a fine haul of individual centuries from Ben Geeson-Brown, Ashley Rump, Josh Hornsby, and the first ever 'ton' in league cricket for our young women's player Juliet Gardner, while in youth cricket Adam Mayho scored over 300 runs in six unbeaten innings in the county's under-15 competition. The season's bowling awards were shared by Hasula Prematilaka, Barry Nutt and Ellie Norton. Abi Florey won both Player of the Year awards for the 3rd and women's teams. At the AGM in October, club stalwart Mike Shayler was elected President following the sad death of Malcolm Harper earlier this year. And a few changes have been put in place for the 2014 season with young Josh Horsby promoted to 1st team captain and Richard Nash taking over as skipper of the 2nd team. We are also hoping to breathe some new life into Sunday cricket by attempting to arrange some short format 20/20 matches with local clubs, while also playing welcome host to touring teams such as The Farmers from Jersey. A repeat of our own pre-season tour is also on the cards.

CLUBS, GROUPS, SOCIETIES

The youth section continues to thrive perhaps the most encouraging being the growing number of girls taking up the sport and receiving their own training sessions on Friday evenings. Three of our younger members—Abi Currie, Ellie Norton and Tom Juszcak—stepped in to take charge of the Saturday morning Cricket Tots. Though the outdoor season is short, from mid-April to mid-September, the club keeps going most of the year. We have two teams in the Banbury Indoor League during the winter while indoor training for both youth and adult players runs from January to the end of March at Burford School. Full details of these and other activities are available on our website.

David Horne

PROBUS CLUB OF CHARLBURY

Members have continued to enjoy excellent lunches at Witney Lakes Resort on the first Wednesday of each month. Once again the accompanying lunch time talks, all from our membership this quarter, have been varied and fascinating, “Luke Howard and the Naming of Clouds” had a local connection in that Luke, when at school in Burford in the late 1880’s, bored with Latin, gazed at the clouds and developed the system of cloud names that we still use today; “A History of the English Canals” provided us with an overview of the first national commercial transport network; “Face to Face Counselling” gave us insight into what it takes to help people think through difficult times in their lives and most recently our Chairman, a Fellow of The Royal Society, spoke about the Royal Society.

On a fine day in August 35 Members, Wives and Friends of Probus enjoyed an excellent lunch followed by a matinee performance of “The Witches of Eastwick”, (a musical comedy of seduction and the supernatural!) at the delightful Watermill Theatre at Bagnor near Newbury. We were again fortunate with the weather for our trip by boat up The Thames from Richmond to Hampton Court Palace. As one who had never been to Hampton Court before, I found the experience fascinating and the presentation of the exhibits to the public very informative.

What is in store for the rest of the year? There will be more interesting talks at our November and December lunches and our Annual Dinner is on the 16th January at Witney Lakes, a three course meal, entertainment and coach to and from Witney Lakes at a cost of £35.

Membership is open to retired men from a wide range of backgrounds and interests living in Charlbury and neighbouring villages. New members can be introduced by existing members or apply in writing for consideration through the Secretary.

You will note reference to Friends of Probus above. ‘Friends’ are those who have retired from Probus or may be widows of deceased members or simply ‘friends introduced’ and who wish to enjoy our outings and other social activities. If you would like to be on our ‘Friends List’ you can be introduced by a current Friend or simply contact me at the address below.

Steve Cavell, 01608 811504 or email stephen.cavell@yahoo.co.uk.

CURTAINS AND BLINDS



*Beautiful made-to-measure
curtains, blinds and accessories*

- ♦ Wide range of fabrics and styles
- ♦ Home consultation
- ♦ Tracks and Poles
- ♦ Full fitting service

"Nigel offers expert advice and superior workmanship at very reasonable prices"

Call us for a free consultation on 01993 868663
or e-mail us at nigel@windowdesign.co

www.windowdesign.co

Bespoke Vintage Tea Parties

Weddings, Anniversaries, Birthdays, Christenings

Afternoon Tea for up to 150 guests from £13.50 / head

All Food & Tea of choice with Service, Vintage china & Cutlery included

Sensitive buffet service for wakes & remembrances

Cakes, cupcakes & sweet delicacies made to order

Volume baking facility for large orders & contract bakes

Call Victoria on 07967 833 979 or email hello@chippingnortontease.co.uk

Web www.chippingnortontease.co.uk

Tweet @chipnortease

Facebook www.facebook.com/thechippingnortontease

The Chipping Norton Tea-Set

Unit D

Elmsfield Industrial Estate

Chipping Norton OX7 5XL

CLUBS, GROUPS & SOCIETIES (cont'd from p19)

CHARLBURY ART SOCIETY

Charlbury Art Society will be meeting on **Nov 13** at the Friends' Meeting House, Market Street Charlbury, at 7:30 p.m. sharp. Nationally acclaimed artist Terry Harrison will give a talk and demo on Boats and Harbours. Entrance fee £3 for non-members and visitors are very welcome..

For more info look at www.charlburyarts.co.uk. Please note there is no meeting in December.

Lee Belcher

*For contributions to the Sports & Clubs section
Please contact Julia Caston on 810240*



CHARLBURY CHRISTMAS TREES



Come and choose your own Christmas tree growing in the field. Thousands to choose from - Norway Spruce & Blues
Open every weekend in December 9.30am - 4pm at
Halcyon Honey Farm, Woodstock Road, Charlbury
tel: 01608 810260

**Turn off the A44 onto the B4437 to Charlbury
and look for the banners**

CHARLBURY WOMEN'S INSTITUTE

On 4 December we are holding a **CAROL SERVICE** at St Mary's Church at 7.00pm and after the Service we will be serving coffee/tea and mince pies. The collection will be going to the Lawrence Home Nursing Team which provides nursing care at home for the terminally ill in the Chipping Norton area. Everyone is welcome to this Service – you do not have to be a WI member. We are also holding a **COFFEE MORNING** at the Corner house on Saturday December 7.

We are CHANGING VENUE for our meetings starting in January. These will be held in the Cornbury Room at The Bell. We meet on the third Wednesday of every month at 7.30pm and visitors are most welcome. We would also be delighted to welcome NEW MEMBERS. Our meetings cover a wide range of subjects from crochet to talks by authors and even one on the Hidden Meaning of Nursery Rhymes. We also arrange visits to the Theatre and other places of interest.

The County Federation arranges many talks, demonstrations and outings to which WI members are entitled to attend.

FOR FURTHER INFORMATION CONTACT PAT HILL ON 01608 OR GILL PRATT ON 810998.



**WYCHWOOD
FLOWERS**

INDEPENDENT ESTATE AGENTS

Covering Charlbury
West Oxfordshire
and into The Cotswolds

BURFORD · MILTON UNDER WYCHWOOD · CHARLBURY · WOODSTOCK
THE OLD BANK · MARKET STREET · CHARLBURY · OX7 3PL

wychwoodflowers.com 01608 433433

RESIDENTIAL SALES & LETTINGS · LAND & NEW HOMES

ChOC and ChOC/live News

We have four items on our programme over the next three months. During December we have one film **Hugo**, a delightful feature which stars amongst others **Sir Ben Kingsley**, and, the following weekend, **ChOC/live** presents **Graffiti Classics** at the Memorial Hall.

Our two films for January and February are **The Moo Man** and **The Hunt**.

All ChOC films and ChOC/live events take place in the Memorial Hall. Films - Doors and licensed bar from 6.45pm, film begins at 7.30pm. Tickets £5 (£3 for U15s on PG and U rated films).

Live events – see individual listings for details.

Hugo (Sun, December 8th Cert. U / 2hrs 6mins) **is directed by Martin Scorsese and stars Asa Butterfield, Sir Ben Kingsley, Sacha Baron Cohen and Emily Mortimer.**

Hugo (Asa Butterfield) is an orphan boy living within the confines of a train station in 1930s Paris. His late father and uncle taught him to mend clocks and other gadgets, a skill which he puts to use keeping the train station clocks running. The only item he owns connecting him to his dead father is an automaton (mechanical man) which needs a special key to make it work. Hugo must find the key to unlock the secret that he firmly believes the automaton contains. An enchanting film for adults and children.

Graffiti Classics (Sat, December 14th, 8pm. Doors/licensed bar from 7.30pm - Suitable for ages 8+) **from ChOClive in association with Good Night Out.** Performing to sell-out audiences, **Graffiti Classics** is one of the best music/comedy shows on the rural tour. "Sixteen strings, 8 dancing feet and 4 voices with one aim - to make classical music wickedly funny and fantastically exhilarating for everyone." "Graffiti Classics burst the confining boundaries of the traditional string quartet with their hilarious all-singing, all-dancing musical comedy show."

"A cabaret that will leave you wanting more" Daily Mail

"A simply wonderful show" The Times

Tickets £9, under 16s £6 on sale at Charlbury Post Office or email live@chocfilms.info
Telephone enquiries: 01608 810713. Also at www.wegotickets.com/choc (10% booking fee)

The Moo Man (Sun, January 12th Cert. U / 1hr 37mins) The story of maverick farmer Steve, his favourite cow Ida and an unruly, characterful herd living on the Pevensy Levels of East Sussex. In an attempt to save his family farm Stephen Hook turns his back on the cost cutting dairies and supermarkets; but staying small and keeping a close relationship with his fifty-five cows comes with an emotional price. An endearing intimate movie that tackles some surprisingly big issues.

The Hunt (Sun, February 9th Cert.15 / 1hr 50mins). This multi award-winning Danish film tells the story of Lucas, **Mads Mikkelsen**, a forty year old divorcee living in a small provincial town who is finally getting his life under control. He has a new job, new girlfriend and is rebuilding his relationship with his teenage son, but his new luck is brutally shattered by an innocent little lie. (Shown with subtitles)

(continued on next page)

Love Your Lawn

GreenThumb's series of 4 pre-scheduled annual lawn treatments will get your lawn into great condition. Over 200,000 customers nationwide value our straightforward, professional and reliable service.

- We are the UK's Lawn Experts
- Our service costs less than DIY
- Pay as You Go service - no contract to sign
- Start any time of the year
- 140+ branches throughout the UK
- Professional feeds not available at garden centres
- Fully trained and uniformed staff



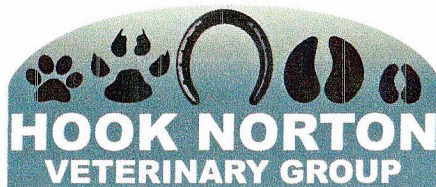
GreenThumb
LAWN TREATMENT SERVICE



For your free,
no obligation,
lawn analysis
and quotation
call your local
branch on

08000 111 222
www.greenthumb.co.uk

Head Office: Integra, St Asaph Business Park, St Asaph, Denbighshire, LL17 0JD



The Spendlove Centre
Enstone Road
CHARLBURY
Tel: 01608 811250

Consultations by Appointment - Monday to Saturday

Main Hospital at Hook Norton
Equine & Farm Tel: 01608 730085
Small Animal Tel: 01608 730501

Branch Surgery at Deddington
Tel: 01869 337732

24 HOUR EMERGENCY SERVICE

www.hooknortonvets.co.uk

(continued from p 23)

ChOC Raffle The proceeds from our raffles and the DVD stall continue to be donated to local good causes. Please contribute your unwanted DVDs and help us raise more funds in this way. Leave them at film nights or email secretary@chocfilms.info for us to collect them. The list of DVDs for sale can be seen at www.chocfilms.info or browse the collection at the bookshop. Applications for contributions to other good causes should be made to treasurer@chocfilms.info

Jackie Hague (CHOC Secretary) secretary@chocfilms.info

FRIDAY COFFEE MORNINGS AT THE CORNER HOUSE

A reminder that HOT DRINKS & HOT SCONES are served every Friday morning between 10 and 11.30am at the Corner House. Come and meet your friends.

COTSWOLD DECORATIVE AND FINE ARTS SOCIETY

The Christmas lecture on December 4, 2013, is "Wonder Workers and the Art of Illusion" by Bertie Pearce. This lecture is a whistle stop tour of the history of mystery from 3000 BC to the 21st century. You might be amazed and bewitched! After the lecture we will serve drinks and mince pies.

There is no lecture in January. In February the lecture is "Painting the Psalms: Books Illustrated for Personal Devotions in Medieval England" by Richard Lockett. This lecture includes a look at the St. Alban's Psalter, one of the greatest masterpieces of Romanesque Art.

Lectures take place at Bradwell Village Hall, Burford OX18 4XF and begin at 11.00am. Non-members are very welcome with no need to book (suggested donation £8).

For further information please see our website at www.cotswolddfas.org.

To those who offered to help with the Chronicle delivery

As I mentioned in the editorial, Brian Murray and Shelagh Scott have very kindly offered to take over the distribution of the Chronicle. You may remember that in the last edition I asked for people to let me know if they would be interested in helping. Would you please be kind enough to get in touch with Brian & Shelagh (819091) to confirm your offer of help.

The Editor

JOHN STANLEY's QUARTERLY WEATHER REPORT

August 2013 started hot, but the heat lasted only one day. After reaching 85 degrees on 1st, temperatures for the rest of the month were mainly around 70 degrees. The lowest daytime temperatures were 65 degrees on 11th, 26th and 31st. The average was 71.9 degrees which is just slightly below the 24 year average of 71.33 degrees. At night, temperatures were in the range 61 degrees on 31st July/1st August and on 1st/2nd, and 47 degrees on 13th/14th.

Despite July being a particularly warm month, **Summer 2013** was still a little below average - for the seventh month in a row. It recorded an average of 70.95 degrees the 24 year average is 71.10

September 2013 started warmer than August had been, with temperatures reaching 75 degrees on 4th and 5th. Then there was a 15 degree drop on 6th and temperatures wavered above and below 60 degrees for the rest of the month. The lowest daytime maximum temperature was 54 degrees on 17th. The average was 63.30 degrees, a little below the 24 year average of 64.87 degrees. Night time low temperatures ranged from 57 degrees on 13th/14th down to 40 degrees on 14th/15th.

The first nine days of **October 2013** were well above average, followed by a cooler period from 10th to 16th. Then it became warmer for eleven days before cooling down again for the rest of the month. The warmest day was 4th at 67 degrees and the coolest 49 degrees on 13th. The daytime maximum average was 58.32 degrees, which is above the 24 year average of 56.58 degrees. At night, temperatures were between 59 degrees on 3rd/4th and 35 degrees on 29th/30th.

Charlbury Osteopaths

Mon-Fri 8:00-18:00

Other times available on request

01608 811 999

07811 103 450



info@charlburyosteopaths.co.uk

www.charlburyosteopaths.co.uk



A Day of Family Fun and Inspiration

Layla Claridge, Charlbury's own **Miss Oxfordshire Inspiration** opened Street Fair this year and set the tone for a day, celebrating our community and particularly the younger generation who are getting involved to secure the future of our vibrant town.

This year's theme was **Carnival** with Oxford's fabulous **Sol Samba** leading the way, bringing the Brazilian Carnival Experience to Charlbury. **Tina's Dance Troupe** once again wowed the crowd with a stunning performance based on Roald Dahl's story of Charlie and the Chocolate Factory.

The range and quality of the stalls was excellent along the length of the street and throughout the Bell Garden area and once again a number of **Classic Cars and Motor Bikes** were on display in the beautiful grounds of the Priory. The Fire & Rescue service put on an impressive demonstration of recovery from a road traffic collision to stress the importance of road safety. As usual, the **Museum** was open and the **Charlbury Arts Society** put on a great exhibition of local work in the Corner House. For the first time this year, the Arts Society also arranged a display of all of the entries to the **Children's Art Exhibition** which were of an amazingly high standard. In the evening, a full street of people enjoyed great music from **The Mighty Redox** and, by popular demand, the return of the **Village Idiots**.

Street Fair weekend got off to the usual cracking start with the **Egg Throwing Competition** on the Friday evening at which a new record breaking distance was achieved. On the Sunday, the **10k & 5k Runs and Walk** through Cornbury Park, with kind permission of Lord and Lady Rotherwick, were well supported.

Earlier in the year, a range of stunning gardens, large and small were appreciated by many at the ever popular **Open Gardens** event. This was preceded by the traditional **Jazz Lunch** which was introduced again this year after a break in 2012 for the Diamond Jubilee Big Lunch celebrations.

To round off the Street Fair year, the **Quiz Night** was held, with assistance from **CADS** on Friday 1st November and a good time was had by all. John Kearsy was quiz master and a challenging set of questions was set by Kate Morris from CADS. A new **Spot the Egg** competition was introduced into the evening's entertainment based on Spot the Ball but using photographs from Street Fair's own Egg Throwing competition.

Many thanks are due to so many who made all of this possible. To the team and everyone who gave of their time to help with the organisation and running of the events. Thanks too, to everyone who supported Street Fair financially and in many other ways. Figures for the year are still to be finalised but we expect to have raised in excess of £10,000 for the Corner House and Memorial Hall in 2013. Another successful year. We hope you all enjoyed the events this year and will support us again in 2014. Perhaps you have some ideas to make it even better! If so, why not come and join the team? We are always on the lookout for new fresh ideas and all are welcome. Please get in touch at info@charlburystreetfair.org. See you again in 2014!

Peter Kenrick

Christmas Church Services

Charlbury Baptist Church



Sunday Services at 10.30am
CAROL SERVICE: Tuesday Dec 10 @ 2pm
Christmas Day Service @ 10.30am

Church Contact:: Helen Wright, Community Link 0770 208 7802
e-mail: charlburybaptistchurch@gmail.com

St Mary's C of E Church



Full details of all services in Church porch
or see *The Leaflet*

The Rev'd Judy French, The Vicarage, Church Lane,
tel: 810286

www.stmaryscharlbury.co.uk

Friends' Meeting House, Market Street



Meeting for Worship at the Friends Meeting House

For further details contact Angela Kyte (01993 880368)

Methodist Chapel, Fishers Lane



Sunday services at 10.30am

Carol Service 6pm December 22nd
Christmas Day service at Baptist Church 10am

Further information from Gill Grason (810154)

St Teresa's R.C. Church, Fishers Lane



CAROL SERVICE: Sunday Dec 15th 3.00pm

Christmas Masses: Dec 24 8pm at St Teresa's
Dec 25 Mass 11 am St Teresa's & 9 am St Kenelm's, Ch Enstone

Rev Aldo Taparo, 5 Enstone Road, Charlbury OX7 3QR
tel: 810576 or see www.communigate.co.uk/oxford.stteresacharlbury

CHURCHES TOGETHER IN CHARLBURY have several shared activities, Including the Bible Study Fellowship.
For further information contact Rosalind Scott - rosalind.scott@hotmail.co.uk or ring 810562

CHURCHES TOGETHER IN CHARLBURY

At the annual meeting of Churches Together in Charlbury in October, representatives of all five churches heard about a proposal to support a women's organisation in Afghanistan. Years of conflict have brought suffering and devastation to the Afghan people. Under Taliban rule women and girls were banned from education and employment outside the home. These inequalities persist particularly in more remote areas. Few women are literate or have any influence in matters that affect them and their children. Maternal mortality is the highest in the world.

The Afghan Women's Education Centre (AWEC) is active in setting up local councils – 'shuras' – where women and young people can meet and discuss issues affecting their lives. The aim is to share information and to create a voice for marginalised groups who have little influence in the current political and economic life of the country.

AWEC is offering literacy classes and adult education to enable women to stand on an equal footing with men in decision making processes. They are setting up community funds in some of the country's more remote provinces to enable women and young people to start their own small businesses and gain a measure of economic independence. They are giving training on issues such as peace-building, women's rights and governmental transparency and linking women's groups to relevant government offices, men's shuras and religious leaders.

Christian Aid is helping to fund the work of AWEC and the European Union has offered matched funding on a ratio of 3:1 for money raised by local groups. In Charlbury we raise money for Christian Aid every year through soup, bread and cheese lunches in Lent and other activities. We have decided to link our fundraising to this project and aim to raise £5000 for AWEC by April 2015. If we can achieve this, the funding from the European Union will increase what we have raised to £20,000.

Our concern is for the women and children of Afghanistan as foreign troops withdraw and the Afghan people become responsible for their own affairs. With the education and opportunities an organisation like AWEC can give them, women and young people have the potential to guide Afghanistan towards a thriving and peaceful future.

Rosalind Scott – Secretary of Churches Together in Charlbury

Contact: rosalind.scott@hotmail.co.uk

DRY STONE WALLING

New walls
Repairs and restorations
Insurance work

Tom Hazzledine

01993 881476

07980 564508

www.tomhazzledine.co.uk

VOLUNTEERS WANTED

Precious thing time – why not give yours and make a difference? Oxfam Volunteers needed to join our happy team in the Book & Music shop in Chipping Norton; no experience necessary as full training will be given; lots of roles available; flexible hours.

Contact the (part-time) manager Helen Datson on

01608 644850 or email

oxfamshop3734@oxfam.org.uk

Report from County Councillor Liz Leffman.

At a recent meeting of the Social and Economic Overview and Scrutiny Committee, of which I am a member, we had a presentation from South Central Ambulance Services about response times in rural areas. Following the meeting I went to visit the ambulance station at Kidlington. I was keen to find out what is being done to improve response times in our area. I learned that West Oxfordshire has received a donation of forty defibrillators to be installed in towns and villages across the district, including Charlbury. I was able to assist the ambulance service by putting them in touch with WODC officers so that they could contact town and parish councils to organise installation. We are very fortunate in Charlbury to have our own First Responders, who are able to get to the scene very quickly, and the publicly accessible defibrillator will be an additional support. Where public defibrillators have been installed, the rate of survival of heart attacks and strokes is significantly improved, so I am very pleased that we will be benefitting from this very generous donation. The donor, who lives in West Oxfordshire and wishes to remain anonymous, has made this donation because of personal experience of how defibrillators can save lives. The ambulance service will be providing training for people in Charlbury, so that everyone can make use of the defibrillator should the need arise. At the September council meeting, the leader of the Lib Dem group and I put forward a motion asking West Oxfordshire District Council to adopt as strategic objective an hourly service to and from Paddington on the Cotswold line, and to press government to proceed with the doubling of the remainder of the line. The council approved the motion with an amendment that called for an increase to the capacity of existing trains. This means that WODC now formally supports the doubling of the remainder of the line and an increase in the number of carriages in use. Although this doesn't mean that we will get any improvements in the short term, at least we know that our council is now committed to lobbying government on behalf of the residents of the area. I would like to take this opportunity to wish everyone in Charlbury a merry Christmas and a happy and prosperous New Year.

Report from District Councillor Hywel Davies (01993 868004)

07917 055120 hwel.davies@westoxon.gov.uk or hywel.davies7@btinternet.com

High Speed Broadband

You have read of the deal between the County Council and BT to bring high speed broadband to Oxfordshire which is to be applauded. However, when the coverage maps were published, it emerged that only about 88% of the county would receive this coverage. The majority Conservative group on West Oxfordshire District Council have decided to make up as much of the missing 12% that is feasible in our area. Obviously, this initiative will cost money but fortunately we have built reserves over the years to use for such important projects such as this. High speed broadband is must- have facility in this modern world particularly for small businesses that work in rural locations but need fast communications around the globe. At present, the relatively slow speeds of existing broadband is proving a limiter on business development in this area. Rural areas are often overlooked but the District Council is determined that we do not slip behind and become a place that cannot attract small business development due to a paucity of the appropriate infrastructure. There are a lot of detailed negotiations to be had but these are

beginning this month and the intention is to get this project completed as soon as possible, hopefully by 2015.

There have been questions asked about the increase in fly tipping following the closure of Dean Pit. The facts point in the opposite direction. Fly tipping has decreased over the recent past probably due to the hard line the Council has adopted against fly tippers, pursuing them through the courts and seeking maximum fines.

May I take this opportunity to wish you a happy and peaceful Christmas and a prosperous New Year.

Report from Cllr Rodney Rose (Charlbury & Wychwood Division OCC) 01865 810419 rodney.rose@oxfordshire.gov.uk

I write this not long after our series of 'Talking Oxfordshire' meetings held around the County in Banbury, Oxford, Wantage, Didcot and Witney. The aim of the meetings was to ask 'Oxfordshire' what it could and could not do without, following the Chancellor's June Statement. This would appear to be adding £61 million to the already planned £201 million savings agreed and in prospect. Following a staff briefing that highlighted that one possible area we might look at could be the countrywide Childrens Centres, it was not surprising that the media ran with this story, and that our meetings were then only really talking about Childrens Centres. This was a bit unfortunate, as savings of this magnitude will have to be taken across the whole Council, equally from such things as Highways, Waste Disposal, Community Transport, Library Service, Elderly Care, etc, etc.

Work continues to form a budget that has least impact on our vulnerable and less fortunate, while still ensuring that we do not neglect our statutory obligations. The backbone of our proposals will first see the light of day when papers are released for the OCC Performance Scrutiny Meeting on Dec 16th. From this meeting, further recommendations will go to the Cabinet Meeting of Jan 17th, and from here to the meeting of the Full Council on Feb 18th, when a budget MUST be set. At this point we will know exactly how much money will be allowed us by central Government - it is obviously impossible to give a spending plan that goes above this amount. We have also been asked at the meetings to look at a Council tax increase above the limit set by Government. This looks unlikely at this moment in time, as it would need to be in the order of 22% year on year in successive years (remembering that the level stays at the raised level in successive years). This would also need a referendum—and cost £500K if not supported.

All meetings mentioned are held in public at County Hall, or feel free to send me any views you may have.



PATRICIA FREEMAN JEWELLER & SILVERSMITH

Visitors and commissions welcomed
Tuition by arrangement

Tel: 01608 810360
E patriciafreeman5@googlemail
Www. Patricia Freeman Silversmith.com

CHARLBURY DAY CENTRE

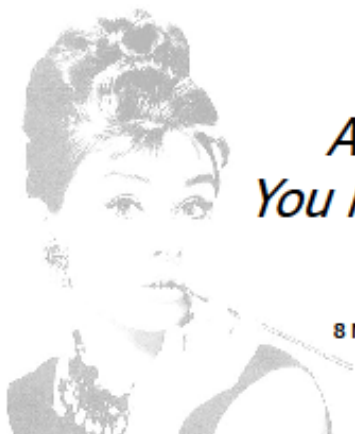
"There are only 98 days until Christmas", one of our members announced in early September with remarkable foresight, but in fact Christmas is just round the corner now. Cards, seasonal tags and other useful gifts are being crafted and will be on sale at our Open Morning on 4th December (10.30am-11. 30am),when all are welcome to join us for coffee or a glass of wine , a minced pie and the opportunity to chance your luck on an excellent raffle.

Bob Tait, Chairman.

The Cotswolds' premier Dress Agency!

*Selling high quality eclectic & designer
clothes, shoes and accessories*

**All
Dressed
Up!**



*All Dressed Up!
You know where to go*

Email: info@alldressedup.uk.com
8 Middle Row, Chipping Norton, Oxfordshire OX7 5NH
Tel.: 01608 646999
(Between Whistlers and Bitter & Twisted)
Website: www.alldressedup.uk.com

CHARLBURY AMATEUR DRAMATIC SOCIETY

2013 has been another busy year for **CADS**. We thank the whole community of Charlbury for supporting us in our productions and endeavours. It is always gratifying to see GOOD AUDIENCES.

AND FOR THESE AUDIENCES

Sometime soon there will be NEW CHAIRS in the Memorial Hall. CADS is delighted to say they have been instrumental in bringing this about.

WIND IN THE ROSES

Our Autumn production arose out of some serendipity. Author and Musician **Stephen Nash** approached the society with the offer of staging his revised script of an original musical play co-written by himself and Jan Lester-George. The play is set in Bethnal Green, in London's East End, during the 'Blitz' between September 1940 and May 1941. Stephen's extensive research into the detailed events of that traumatic period of World War 2 and the particular locale of Bethnal Green has made this play a marvellous tapestry of historical accuracy and fictional realism. A wide range of colourful characters come to life on stage, all affected in different ways by the terrible bombings, sacrifices and suffering of that time.

A wonderful ensemble piece for CADS as it has numerous medium sized roles with some minor characters, including parts for 7 children as well. **Olive Woods** has had a challenging job as **Director** marshalling all the diverse elements with **Stephen Nash** as **Musical Director**. Sourcing period costumes and props has been extremely demanding for this show. Denise Summers, Helen Datson and other members of the team have performed miracles.

The songs include wartime favourites such as 'White Cliffs of Dover' and 'We'll Meet Again'. But there are also several lesser-known ballads from the war, simple yet moving, as well as three original songs written in the period style by Stephen Nash.

PERFORMANCE DATES FOR WIND IN THE ROSES 21-23 November.

LOOKING FORWARD

The Annual CHRISTMAS DINNER DANCE will be held on Friday 6 December at the Chipping Norton Golf Club. CADS members, friends and relations are all most welcome.

ARSENIC AND OLD LACE

CADS' next production will be the 1940s dark comedy by Joseph Kesselring **ARSENIC AND OLD LACE**. Many readers will be familiar with the very popular Cary Grant film of the same name. The stage version will be directed by Kate Morris and performed in May 2014.

Auditions will be held Tues 7 and Thurs 9 January 2014 in the Methodist Church Hall, Fishers Lane. This play requires 10 male parts to 3 female parts. So, if there are any male wannabe actors out there please come and try us out - especially if you are in the 25 to 45 age group.

Madeleine Wheare

Charlbury Drama



01608810092



Fixed price PC help to your door.

Computer care and repair for Charlbury



DESKTOPS & LAPTOPS

- Screen repair
- Data recovery
- Virus removal



TABLETS & MOBILES

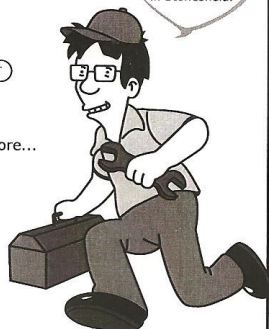
- Power socket repair
- Software problems
- New PC advice & set-up



NETWORKS & INTERNET

- Broadband install
- Liquid spills
- See website for more...

Locally based
in Stonesfield.



★ from only £29.90 ★

- ✓ Free collect & return
- ✓ 10+ years' experience
- ✓ No fix - no fee
- ✓ Fully insured
- ✓ 30 day repair guarantee
- ✓ Evenings & weekends



www.pc-wise.co.uk

For friendly advice and a free diagnosis call or email:

t: 01993 891 072 m: 07581 368 311 e: charlie@pc-wise.co.uk

WINDOWS DOORS & CONSERVATORIES

Full range of Energy Efficient
Windows & Doors

- • • Traditional Wooden
- • • UPVC Full Colour Range
- • • Secondary Glazing
- • • Box Sash
- • • Composite & Bifold Doors
- • • Conservatories
- • • Fully guaranteed

CHARLBURY FAIRMITRE

TEL/FAX 01608 810966

WORKSHOP/MOBILE 07977 143006

Old Post House, Market Street,

Charlbury OX7 3PH

Www.fairmitreconservatories.co.uk

Need manuals, handouts, leaflets,
flyers, all types of photo-copying -
colour or black and white - email
originals to rogerw@bfocus.co.uk

**business
FocusS**

tel/fax 01993 830948

Email: rogerw@bfocus.co.uk

Email: rogerw@bfocus.co.uk

JON CARPENTER CONTEMPLATES THE FUTURE

As I write this at the end of October, it doesn't look as if anyone will be taking over the bookshop when I retire in January. I shall be sorry to be living in a town without a bookshop. I've been a bookseller for most of the last 45 years, but while most good things come to an end, others may start afresh! I have plenty to look forward to. Unlike all or most other western European countries, Britain has chosen to place no restriction on the discounting of books, and together with the advent of the ebook this has made traditional 'bricks and mortar' bookshops increasingly vulnerable. As more and more people shop online, we've just been waiting for the tipping point to come. In France, Germany, Sweden, Italy, Holland and elsewhere they made different decisions. (And don't fall into the trap of just blaming the Tories.) The turnover at Evenlode Books is little more than half what it was 7 or 8 years ago, and falling year by year. We have to accept this state of affairs: as a community and as a country we have made our choice.

The eclectic and idiosyncratic stock of a 'real' bookshop is something quite special, but now increasingly hard to find. That is something you cannot replicate on a website. And if Evenlode Books closes, I urge you to transfer your allegiance to Rachel at the Woodstock Bookshop or Patrick and Polly at Jaffe and Neale in Chippy, if you travel in those directions.

On the one hand, what has particularly saddened me over the last thirteen years (I opened the shop on April Fool's Day 2000) has been the occasionally belligerent, more commonly just sadly negative attitude of some people to the internet. Proud not to be online, determined to remain aloof from the changes taking place in the world around them, as they get older these people are destined for increasing isolation and helplessness. Some are among the readers of this article. I know some octogenarians who shop online and have everything, groceries, clothing and all, delivered to their door, while their neighbours many years their junior complain of their problems accessing shops, services and information. Who will pick up the pieces?

I'd like to spend some time next year working on ways of contacting and educating our computerphobes, so they can participate in the ever-changing society most of us benefit from being part of. Are you interested in exploring the options?

By contrast, what has cheered me no end has been the extraordinary variety and number of people I have met here. I feel quite privileged as I walk to work each morning and exchange greetings with such remarkable and diverse people. Most of us speak to little more than a dozen local people at most: I get to speak to hundreds! As I look forward to my retirement, I want to say thank you to so many of you who have made working, and more recently living, in this remarkable town such an enjoyable experience.

Now to answer the questions people are asking me: yes, Christmas is business very much as usual in the shop, with the overnight delivery service on customer orders very much in place. Then, assuming no one comes forward, the bookshop will close with a big sale in mid-January. And Charlbury may lose yet another retail premises. You can keep up-to-date with any news at www.charlbury.info should circumstances change.

Looking further ahead, I'd love to keep in touch, and if you care to follow me on my blog at evenloder.blogspot.co.uk, I'll be very pleased to have your company and have the occasional chat and exchange of views. Meanwhile, see you in the queue at the Co-op!

Jon Carpenter

Charlbury Train & Bus Times

from 8 Dec 2013

X9 bus	<i>Witney</i>	<i>The Bell</i>	<i>Ch Norton</i>	<i>Ch. Norton</i>	<i>The Bell</i>	<i>Witney</i>
Mon-Fri	07.40	08.07	08.28	07.04 07.50	07.24 08.10	07.42 08.45
Saturday	08.00	08.25	08.45	08.08	08.28	08.48
Every day	09.00 10.00	09.25 10.25	09.45 10.45	09.08 10.08	09.28 10.28	09.48 10.48
except Sunday	...every hour until...			...every hour until...		
	18.00	18.25	18.45	18.08	18.28	18.48
Fri & Sat	20.20 23.20	20.45 23.41	21.01 23.57	19.12 22.12	19.28 22.28	19.48 22.48

Services to Witney call at Nine Acres Lane, Enstone Road, the Co-op, the Bell, Wellington Cottages. Services to Chipping Norton call opp. Sturt Close, top of Dancers Hill, Wychwood Close, Enstone Road, the Co-op, the Bell, then around the loop again to Enstone Crossroads and Nine Acres Lane.

Operated by Stagecoach (www.stagecoachbus.com).

C1 railbus Monday-Friday

<i>Sturt Cl</i>	<i>Co-op</i>	<i>Station</i>	<i>Station</i>	<i>Enstone Rd</i>	<i>The Bell</i>	
06.14	06.16	06.20	17.11	17.13	17.15	(waits 10 mins
06.59	07.01	07.05	17.57	17.59	18.01	for late trains)
07.30	07.32	07.36	18.40	18.42	18.44	(waits 20 mins
08.16	08.18	08.22	19.46	19.48	19.50	for late trains)

Evening buses continue to Wellington Cottages and Leafield. T1 bus meets some daytime trains: book in advance on 0844 870 8479.

Operated by Go Ride (www.goridebus.co.uk).

S3 bus Monday-Saturday - Operated by Stagecoach

The Bell, Charlbury to Oxford:

06.15 (not Sat), 06.50, 07.25 (07.30 Sat), 09.30, 10.30, 11.30, 12.30, 13.30, 14.30, 15.30, 16.25 (16.30 Sat), 17.25 (not Sat), 18.40.

Oxford Bus Station to Charlbury:

08.40 (08.35 Sat), 09.25 (not Sat), 10.25, 11.25, 12.25, 13.25, 14.25, 15.25, 16.15 (16.25* Sat), 17.00 (not Sat), 17.45*, 18.35* (not Sat), 21.45*, 23.45*.

* Bus via the Slade to Chipping Norton – does not stop at the Bell.

Compiled by Richard Fairhurst,
October 2013. Feedback:
richard@systemeQnet. Please
double-check before travelling and
don't rely on this to catch a flight!

	Worcester	Charlbury	Oxford	Reading	London	London	Reading	Oxford	Charlbury	Worcester
Monday-Friday trains	05:11*	06:06	06:30	06:55	07:27	05:45	06:17	06:51	07:10	08:16
	05:31	06:28	06:55	07:26	07:59	06:48	07:19	08:04	08:22	09:19
		07:12	07:34	07:57	08:31			08:58	09:14	
	06:14	07:30	07:52	08:24	08:51	08:22	08:52	09:21	09:39	10:56
	06:52	07:49	08:12			09:21	09:52	10:25	10:42	11:41
	07:28	08:31	08:51	09:18	09:47	09:50	10:22	10:48	11:04	
	08:26	09:41	10:01	10:26	11:00	10:22	10:52	11:19	11:37	12:50
		10:08	10:31	10:56	11:30	11:20	11:52	12:19	12:36	13:42
	10:06	11:06	11:31	11:56	12:30	12:21	12:52	13:25	13:41	14:57
		12:08	12:31	12:56	13:30	13:21	13:51	14:19	14:36	
	12:06	13:08	13:31	13:56	14:30	14:21	14:52	15:20	15:36	16:44
	14:01	15:07	15:31	15:57	16:29	15:52	16:22	16:49	17:07	18:09*
	14:38	15:41	16:01	16:26	17:00			17:32	17:56	19:12
		16:10	16:31	16:57	17:34	17:22	17:50	18:17	18:35	19:40
	15:42	16:34	16:49			17:49	18:22	18:49	19:03	20:05*
	16:01	17:10	17:31	17:56	18:28	18:22	18:51	19:23	19:42	20:46
	17:28	18:37	19:06	19:33	20:06	19:22	19:52	20:20	20:38	21:54
	18:49	20:05	20:31	20:56	21:29	20:20	20:51	21:21	21:38	22:45
	19:56	21:05	21:32	21:56	22:41	21:48	22:25	22:53	23:11	00:13*
	20:59	22:07	22:30	22:59	23:38					
	22:34	23:45	00:07	00:39	01:20					
Saturday trains	06:09	07:05	07:31	07:55	08:29	05:21	05:55	06:24	06:42	07:50
	07:04	08:07	08:31	08:56	09:29	06:21	06:54	07:23	07:39	08:46
	07:59	09:07	09:31	09:55	10:29	07:21	07:54	08:23	08:39	09:45
	08:58	10:10	10:32	10:58	11:30	08:21	08:54	09:23	09:41	10:50
	10:04	11:07	11:30	11:58	12:32	10:21	10:54	11:23	11:40	12:50
	11:11	12:08	12:31	12:57	13:32	11:21	11:54	12:23	12:41	13:45
	12:59	14:08	14:31	14:58	15:30	13:21	13:54	14:23	14:39	15:45
	14:57	16:02	16:31	16:56	17:29	14:21	14:54	15:23	15:39	16:47
	15:59	17:03	17:31	17:58	18:29	15:21	15:54	16:23	16:39	17:45
	16:55	18:02	18:31	18:56	19:29	16:21	16:54	17:23	17:40	18:57
	18:02	19:03	19:31	19:55	20:29	17:21	17:54	18:23	18:40	19:45
	18:49	20:03	20:31	20:56	21:29	18:21	18:54	19:23	19:40	20:50
	20:02	21:07	21:31	22:02	22:38	19:50	20:22	20:49	21:05	22:08
	21:11	22:14	22:35	23:09	23:45	21:48	22:21	22:50	23:07	00:07*
Sunday trains	09:32	10:28	10:51	11:25	12:04	08:03	08:44	09:18	09:35	10:40
	11:28	12:26	12:51	13:23	14:01	09:35	10:17	10:49	11:08	12:12
	13:27	14:25	14:51	15:23	16:01	10:42	11:18	11:52	12:10	13:14
	14:26	15:27	15:49	16:24	17:01	12:42	13:21	13:54	14:10	15:12
	15:23	16:27	16:50	17:25	18:06	13:42	14:22	14:52	15:07	16:09*
	16:28*	17:28	17:50	18:20	19:02	14:42	15:20	15:58	16:15	17:14
	17:22	18:30	18:50	19:29	20:07	15:42	16:21	16:57	17:11	18:07
	18:26	19:29	19:50	20:26	21:06	16:42	17:21	17:55	18:15	19:13
	19:29	20:30	20:50	21:22	22:03	17:42	18:26	18:57	19:15	20:20
	20:28	21:25	21:50	22:22	23:03	18:42	19:21	19:58	20:16	21:11*
	21:28*	22:25	22:46	23:18	00:06	19:42	20:22	20:54	21:12	22:16
						21:42	22:23	22:57	23:15	00:12*

Worcester times are Foregate Street except * (Shrub Hill). Next train timetable change in May 2014.

FINSTOCK SCHOOL

Recent commentary in the press has noted the downward trend in OFSTED ratings for schools – the system of government inspection has been changed to apply more critical standards. But Finstock School is in celebration mode! Why? Because their recent September inspection saw them secure a “Good” rating, building further on the improvements recorded at the last visit in 2012.

The Inspector paid tribute to the relentless efforts of Head Teacher Mrs Jean Roden (whom he described as “astute, capable and constantly striving for improvement”) and the Staff team, and he acknowledged that the School is now consistently good in all areas, and in some outstanding! The quality of teaching was called out, the attainment of children is above average, good behaviour and a strong sense of values is evident, and most importantly the school is a place where children feel safe and cared for.

But there’s no resting on laurels. As Chair of Governors Rod Ireland explains, “Together with staff, parents and pupils, we’ve created a compelling vision of ‘Spectacular Education’ for Finstock School, and this drives us on a journey of continuous improvement. We are superbly supported by members of the wider community, who give of their time to raise funds, organise sports and other events, and spend time with the children to help their reading. In West Oxfordshire, we can all be proud of Finstock School, but now we are working even harder to make sure it’s a place every parent wants for their child”.

POLICE NEWS

From PCSO Wesley Smith

C9837

Thames Valley Police

We are holding a **FREE ‘Catalytic Converter Marking Day’** at the First Garage, Hook Norton on Saturday 16th November 2013 between 1000hrs and 1500hrs. We will etch your Catalytic converter with a unique serial number which means we can easily identify it if it is stolen. We will also provide you with a sticker to be displayed in your window indicating the CAT marked and which prevents offenders. Please just turn up on the day!”

Catalytic converter thefts

Catalytic converters are designed to remove toxins from vehicle emissions. The devices contain small amounts of three precious metals: platinum, palladium and rhodium. In recent years, the price of these metals has soared to record levels, which means that catalytic converters can provide a substantial return to a thief for just a few minutes work.

Transit/Sprinter vans and other vehicles with high clearance are especially vulnerable.

CHARLBURY COMMUNITY DIRECTORY

Please note that it is the responsibility of each organisation listed
in the Community Directory to notify any changes to the Editor

Arts Week - Di Gold (810256)

Baptist Church - Helen Wright (07702 087802)

charlburybaptistchurch@gmail.com

Charlbury Amateur Dramatic Society (CADS)

Madeleine Wheare 810092 www.charlbury-drama.com

charlbury.drama@gmail.com

Charlbury Art Society (CAS) Sec: Lee Belcher (819003)

Charlbury Beer Festival - Liz Donnelly (810056)

liz.donnelly@yahoo.com www.charlburybeerfestival.org

Charlbury Bowls Club - Secretary, Heather Hill - 810229

819117 - chamber@charlbury.info

Charlbury Canoe Club - Hugh Belshaw (810130)
hughandjoan@uwclub.net

Charlbury Chess Club - Bob Douglas (811083)

Charlbury Chronicle - Lynette Murphy (810688)
lynette.murphy@cchronicle.plus.com

Charlbury Community Centre Appeal Anna Cherry (810692)

Charlbury Cricket Club - Colin Olliffe (01993 704108 or 07909 9788863) colin.olliffe@gmail.com

www.charlburycricketclub.co.uk

Charlbury Day Centre - Bob Tait (810150)

Charlbury Evergreen Club - Ken Taylor (811441)

Charlbury Fairtraders - Cara Williams (811284)
michaelcara1965@yahoo.co.uk

Charlbury and District Garden Society

Geoff Clifford (811006)

Charlbury Morris - Peter Smith (811007)

peter@charlburymorris.org - www.charlburymorris.org

Charlbury Museum - Jennifer Bartlett (810312)

Charlbury Open Gardens - Vic Allison
vic.allison@btinternet.com

Charlbury Pioneer Country/Western Club
(Ray & Margaret) 01993 831345

Charlbury Pre-School Jan Stubberfield (811200)

Charlbury Royal British Legion - Nick Potter (810388)

Charlbury School - Jane Holt, Head (810354)

office.2100@charlbury.oxon.sch.uk

www.charlbury.oxon.digitalbrain.com

Charlbury School Association - Sarah

Brooks - office.2100@charlbury.oxon.sch.uk

Charlbury Scouts & Guides - Charlbury Scout

Group - Marcus Goodwin 01608 676207

Charlbury Brownie Guider - Fay Kempson 01993 779350

Charlbury Society - Simon Walker, (811414)

Charlbury Town FC - Keith Claridge 810201 or 07870426707

Charlbury Street Fair - Barry Cooper
barrycooper@prisymid.com or 07770 225673.

Charlbury Tennis Club - Mark Curthoys

charlburytennis@hotmail.co.uk

Charlbury Town Youth Football Club - Lynn Gorton
01993 869248 carlyynn@uwclub.net

Charlbury Green Hub - Christine Elliott (811057)

www.charlburygreenhub.org.uk

Charlbury Women's Institute - Secretary Gill Pratt 810998

CHOC Cinema Jon Carpenter (819117)

choc@charlbury.info

Churches Together - Rosalind Scott,

(810562) rosalind.scott@hotmail.co.uk

The Bell Hotel (810278)

The Bull Inn (810689)

Cotswolds Guided Walks - Kevin Myhill, Walks Leader (737490) **Four-**

shires LETS Group (skill swaps)

Ann/David Morton - (676302)

Friends Meeting House: Angela Kyte (01993 880368)

Holiday Club - Sue Holiday (810694)

Little Fishes Under 5's Group - Kate (811579)

Macmillan Cancer Care - Liz & Bob Tait (810150)

Mind in Chipping Norton (Mental Health Support) 01608 645296

Methodist Chapel - Gil Grason (810154)

The Probus Club of Charlbury Steve Cavell (811504)
stephen.cavell@yahoo.co.uk

Riverside Festival - Andy Pickard (810635)

admin@riversidefestival.charlbury.com

www.riversidefestival.charlbury.com

Shed Theatre - Teresa Laughton (810934)

St Marys C of E Church Rev Judy French (810286)

St Theresa RC Church Fr Aldo Tapparo (810576)

Street Stage (touring youth fusion company) Anneke Hay (811269)

Sustainable Charlbury - Liz Reason (811212)

Thomas Gifford's Charity - Liz Reason (811212)

www.charlbury.info - Richard Fairhurst

United Nations Association (West Oxfordshire) -

Wychwayz Border Morris - Teresa Laughton (810934)

Wilderness Festival—www.wildernessfestival.com



CHARLBURY'S POLICE OFFICER

**Our Police Community
Support Officer
is C9837 Wesley Smith**

who works out
of the Charlbury Police Office
at the Spendlove Centre.

This office is open for general enquiries, lost
property and production of documents etc,
Mondays 12 noon - 3pm
and Fridays 9am - 12 noon.

10am – 12 noon on the 1st Saturday of each
month & Market days

To contact your PCSO
call 0845 8 505 505

In an emergency always call 999; for
other enquiries or to talk to your
neighbourhood team please call 101

If you want to help why not become a
Police Support Volunteer? If interested
please call 01865 846 250

www.thamesvalley.police.uk

We have a mailing list for people
wishing to receive *The Charlbury
Chronicle* who no longer live in the
town. **Now £3.50 per four issues;
£6 per four issues for overseas
subscribers.** Large-print £2.50 for
each copy.

Please note that **ALL** cheques for
advertising, mailing list or donations
should be made payable to *The
Charlbury Chronicle* and should be
sent to the Treasurer, Dawn Colvin,
whose address is in the panel on the
right.

Editor: Lynette Murphy
Gracecroft, Crawborough, Charlbury
OX7 3TX

tel: 01608 810688

e-mail:
lynette.murphy@cchronicle.plus.com

Assisted by:

Diana Potten (810991)
Julia Caston (810240)
and others

Advertising: Jack Potten (810991)
9 Enstone Road, Charlbury OX7 3QR

Treasurer: Dawn Colvin
3 Enstone Road, Charlbury OX7 3QR
tel: 01608 810545

Artwork:

Ann (Gilbert) Buckmaster (810664)

Distribution:

Robert Caston (810240)
Peter Woolfenden (811296)
Brian Murray/Shelagh Scott (819091)

The Charlbury Chronicle is produced and
distributed free to every household in
Charlbury. All those involved in its
preparation work on a voluntary basis. **The
Charlbury Chronicle** aims to be impartial
and independent and cannot be held
responsible for any of the views expressed in
its pages. The editor reserves the right to
alter or adapt any articles submitted for
publication although hoping to discuss any
major changes with the authors first.

The Charlbury Chronicle acknowledges the
financial support of the many societies,
groups and individuals who generously
contribute to its funds. We also acknowledge
the support of our advertisers and hope that
any reader using their services will mention
The Charlbury Chronicle.



Printed by Will Print, Abingdon