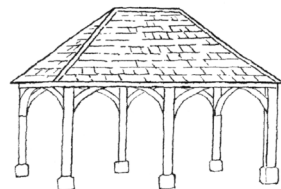


Charlbury Chronicle



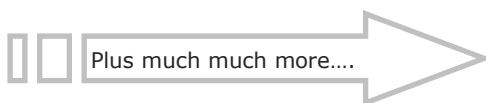
Volume 24 Number 3

Autumn 2020

The Charlbury Chronicle is a free quarterly local community publication run by volunteers covering news and events for Charlbury and the surrounding area

Inside this issue:

Charlbury News	6
A Day's Life—Joan Belshaw	14
Plantlife	16
Coffee Break Page	19
Charlbury Town Football Club	24
Charlbury Church Services	28
Charlbury Green Hub	37
ChOC	38
The Cornerstone	42
Charlbury Community Directory	47



Contacts:-

Editor: editor.chronicle@outlook.com
Advertising: gjowettchronicle@btinternet.com
Distribution: brian_murray_guide@yahoo.co.uk

Charlbury Garage

Hixet Wood, Charlbury, OX7 3SB

01608 810898

08:30 – 17:00 Monday to Friday

Attending to motorists' needs for over 40 years, we offer a local, friendly, helpful & trustworthy service

- MOT & Pre-MOT
- Tyres & Exhausts
- Servicing
- Batteries
- Aircon
- Bodywork

Competitive tyre prices

MOT £44

Half-price MOT with Full Service

Courtesy car available

Cars bought & sold



www.charlburygarage.co.uk
info@charlburygarage.co.uk

From the Editor

During the time of Covid 19 we have all had to adjust to the things we do, how we do our shopping, meet family and friends and even go on holiday.

However, now that lockdown has eased somewhat, we are able to go out more and meet up with more people.

As a result the organisations have indicated how they will meet up over the forthcoming months.

There is no "What's On" again but details of meetings should be in the relevant articles.

The good thing is that there WILL be a Street Fair, on 19 September, although only taking place on the Saturday, with no Egg Throwing on the previous Friday, and no dancing in the street, after the fair.

Because the Corner House & Memorial Hall have suffered during lockdown, please do go and support this

worthwhile cause and spend lots of money!!

There is an interesting article on "The Charlbury News" on page 6, the precursor to the Chronicle. This makes for a very amusing read!

The Charlbury Town Football and Sports Club new clubhouse will be opening soon and you can see some pictures and information in the centre pages.

And of course, there is the Ride and Stride taking place on 12 September, along with the Charlbury Children's Bike Rally. And the Farmers' Market!!

Charlbury will be busy again in September and if you want to pick up a lovely mask, these are available both in Cotswold Frames and the Community Centre.

Lastly, ChOC need members in order to continue—see page 38.

Susanna Finch

**Please note the deadline for articles for the Winter issue is 1st November 2020
Please send all articles to editor.chronicle@outlook.com**



Charlbury Street Fair, 19th September, 2020

Good News. 2020's Street Fair will take place on 19th September 2020 in a scaled-down version of our usual event. The current social distancing measures will allow us to run a reduced number of stalls, and we will have a raffle and a silent auction. We will also have marshals to ensure the stalls don't get too busy. You should have seen advertising for the Fair and associated competitions – the Children's Art Competition and the Superheroes' Scarecrow Competition.

We are ever optimistic so do come and join in the fun!

We have made plans for Saturday road closures, the raffle and 'silent auction' and have quite a few stalls and Hatwell's Fun Fair due to attend. We even have limited entertainment planned for the day and so do please keep an eye out on social media including Facebook, Twitter and www.charlburystreetfair.org. On the other hand, we have had to cut down on activities and so we will be active only during the daytime of 19th. This means we won't be having an egg throwing competition on the Friday evening, nor dancing in the street on Saturday evening.

This all is of course on the premise that the COVID-19 restrictions that are in effect at the time still permit Street Fair activities.

Sadly, we were unable to run the Quiz Night in March and Open Gardens in June, although the Open Gardens turned into a successful 'virtual' event run by Charlbury Garden Society. This event accepts donations online for the Street Fair fundraising for the Corner House and War Memorial Hall charity, here is the link to the fundraising page <https://www.gofundme.com/f/ddxcf2-a-cause-i-care-about-needs-help>

All of the funds raised at the Fair go to the upkeep of the Corner House and Memorial Hall, which are close to the heart of our thriving community.

Road Closures and Parking

As is customary we have received permission to close roads for the event. This year only Church Street and Park Street will be affected, and from 9am on the Saturday. Diversions will be signed.

By kind permission of the Primary School, Wychwood Paddocks Playing Field will be available for parking for visitors, on the Saturday.

We will of course remind Charlbury residents in these locations nearer the time and, as usual, we respectfully request alternative parking to be sought to allow room for the Fair Stalls in Church Street.

Thanks

Our thanks go to our principal sponsors including Fairfax Estate Agents and Cotswold Frames for assistance, sponsorship and offering some great prizes for the Grand Draw. Grateful thanks go also to those who offered items for the Silent Auction.

Finally, I'd like to extend thanks to our band of willing volunteers who, with their hard work and help, sustain the local tradition of the Fair.

We all hope that 2021 will bring a more normal Street Fair!

For up-to-date information, see www.charlbury.info and www.charlburystreetfair.org

To contact me by email please use csfchairman@charlburystreetfair.org.

John Dora, Chair, CSF Committee.



Call for Repairs

The Climate Emergency Workshop held last February in Charlbury highlighted difficulties people have in getting things repaired and having to throw too many things away. Charlbury Green Hub had been thinking about holding Repair Cafés in Charlbury along the lines of others being held by community groups in Oxfordshire but the Covid-19 restrictions have made us rethink what might be possible.

First of all, we wouldn't want to take work away from people who currently do repairs as a living and so we would help publicise people and companies who take on repairs locally. We do, however, want to help people get things repaired that they can't otherwise get fixed.

We know there are several people in Charlbury who are good at fixing things – and there are probably a lot more, but we just don't know who to contact and so end up throwing things away that could be repaired. I am quite lucky with my partner who has recently mended a broken glass photo frame for me, an old Sony Walkman, an old travelling alarm clock, and he even 3D printed the cogs for my broken Braun hand wand blender.

If you are good at fixing things and might have time to fix a few more things, then please get in touch with us at repairs@charlburygreenhub.org.uk or phone me on 01608 811057. Also please

contact us about things you need repairing so we can get a feel about what sort of demands there are out there.

We would hope to have a small group of people with a variety of skills and when someone needs something repaired we could find the person with the best skillset to see if they could repair it. The people doing the repairs would have their own equipment and facilities to carry out the repair in their own homes; they would be able to take the time needed for background research, obtain spare parts etc and agree with the owner what would be possible and how much any materials might cost. In some cases, they might be able to show the owner how to do the repair themselves, thus sharing their skills.

We all love The Repair Shop on the BBC; this was originally shown to a small daytime audience but now reaches millions in a primetime slot each week. This is more about restoration by experts than simple repairs but it does highlight the emotional connections we have with our possessions and just what can be done. What strikes me is that the skills these experts show are fast disappearing and wouldn't it be marvellous if such skills were able to be passed on to other generations.

Christine Elliott, Charlbury Green Hub



Charlbury Garden Society

The Coronavirus may have scuppered our plans for evening talks, our Plant Sale and Spring Show but it has not prevented us from organising the virtual **'Charlbury Open Gardens'** and showcasing them on our spanking new and beautiful website. Twelve gardens are featured on film and photomontage. You can view the gardens for free but we ask for donations in support of the Corner House and War Memorial Hall. There is a donate button on the website. Grateful thanks go to Georgia, Harriet and Helen for a huge amount of hard work to organise and design the website and get it up and running. Thanks too to Edmund Blok, photographer, for his stunning photos of some of the gardens. We are still populating the website pages and when finished this will be the place to go to know what the garden society is up to:
www.charlburygardensociety.org.uk

Many locals are finding the Charlbury Gardeners Facebook page a great place to post gardening photos, to ask for horticultural advice or to exhibit your finest ever crop of garden or allotment grown goodies! We're poised to open an Instagram account too. Watch this space!

Coming up:

The annual Flower and Produce Show will take place in virtual form and the closing date is 12 September. There are six categories:

- tallest sunflower
- largest vegetable
- longest vegetable
- funniest/oddest shaped vegetable
- most perfect flower
- tallest hollyhock

Take a full resolution photograph and send it **as an email attachment** to showsecretary@charlburygardensociety.org.uk. This is open to all ages. Don't forget to add any measuring devices in the photo, or state the measurements taken, plus your own name and location in the email. No prizes, but we'll display the photos on the website so everyone can enjoy the results.

Following on the heels of the virtual Annual Show, we hope the Charlbury Street Fair on Saturday 19 September will go ahead. If it does then we will be there with our stall. We plan to have a Bring and Take Plant and Seed stall. If you will have seeds or spare plants from your garden to donate please contact: secretary@charlburygardensociety.org.uk

On Saturday 10 October we hope to have a coffee morning and plant sale outside the Corner House between 9.30—12 pm. The Annual General Meeting and Harvest Supper is scheduled for Thursday 15 October. This will go ahead in some form but is unlikely to be held in the Memorial Hall due to coronavirus restrictions. Our final talk for 2020 will be on 19 November at 7.30 pm and is likely to be held on-line. Andy Howard from Heritage Trees will be talking about 'Apples through the Seasons'.

If you'd like to join, membership is £5 pa (£8 for couples and families). Membership includes a discount card which gives 10% discount on plant purchases at several garden centres in the area. Enquiries to: membership@charlburygardensociety.org.uk. For full info on what we do visit: www.charlburygardensociety.org.uk



Oxfordshire Historic Churches Trust

Supporting Oxfordshire's Churches since 1964

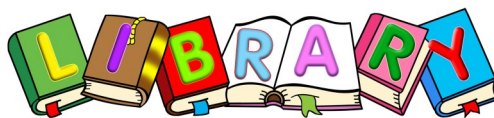
The annual Ride and Stride round Oxfordshire's churches

OHCT's annual Ride and Stride is not just a good way of raising money for a very good cause; it is also good exercise and good fun for all the family. You decide your own route and set your own target for the number of churches you will visit, and, just when you think your lungs cannot cope with any more, you reach another church offering respite and encouragement and an excuse to stop and have a look round.

This year the event will again be taking place on the second Saturday in September despite the pandemic but the organisation and the arrangements in each church have had to be adapted.

You do not have to be a churchgoer to take part and enjoy a really good day out. You can sign up at ohct.org.uk/ride-stride/ and start getting sponsorship online. There will also be sign-up and sponsorship forms in each of Charlbury's churches. The main Ride and Stride raises money for OHCT and a church of your choice.

For more information please contact Alison Eastwood 0787 089 3223 (staleyardalison@gmail.com) or Basil Eastwood 0796 997 0003 (basil.eastwood@gmail.com)



News from Charlbury Library

At the time of writing (end of July), we don't have a date for Charlbury Library re-opening. The good news is that there will be lots of new books in Charlbury Library when we finally do open, as the acquisitions team have been busy during lockdown!

Many of the larger libraries around the county are now open so if you're able to get to one of them, you can at least return items and borrow new ones. Borrowed items don't have to be returned to the original library – any open library within Oxfordshire is fine – but all returned items will be subject to 72 hours quarantine before staff can remove them from your ticket.

The public computers and printing/ photocopying facilities are also available, albeit with extra safety measures in place. The Blue Badge/Bus Pass validation facilities are also available again at the larger libraries as before, with a pre-arranged appointment.

Any borrowed items that had a return date for during lockdown do not need returning until October 2020 and will not incur charges. However, items borrowed that were due back before lockdown will have incurred the usual overdue charges from the date they were first overdue, until lockdown.

The Volunteers and myself are looking forward to welcoming our local library customers back again and to providing a normal (ish) service for Charlbury and the local area. We inevitably will have a reduced number of volunteers to keep the Library running once we re-open, so if you are willing to commit to a few hours each month to help out, please contact me by email below.

Julie Ward
Manager, Charlbury Library
01608 811104
charlbury.library@oxfordshire.gov.uk

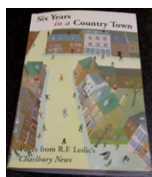


All Together In Charlbury – a local helping hand

If you need:

- Transport to appointments or activities/ visits
- Occasional household tasks/gardening
- Shopping
- Help with a form or letter or something else
- Someone to pop in for a chat

Local ATIC volunteers are here to help
– call 07487 413892 during lockdown



CHARLBURY NEWS

If you lived in Charlbury before 1996 you will remember the pre-cursor to the Chronicle was the Charlbury News. In 1990

Professor Robert Leslie used the occasion of Street Fair to publish an experimental newsletter – he called it the *CHARLBURY NEWS*. Professor Leslie lived in Church Street with his wife Marjorie and could often be seen out and about in the centre of Charlbury searching for news. He was not averse to speaking his mind and, it must be said, was very non-PC!! He made us smile though.

Whilst having some free time (during the Covid 19 pandemic) I picked up my copy of "Six Years in a Country Town". This small book was edited by Edward Fenton and published in 2004 by the Charlbury Press and contains pages from Professor Leslie's *CHARLBURY NEWS*. Ed first brought it out to raise money for the Community Centre Appeal and intends to take some copies down to the Centre so that they can sell them and keep the proceeds. He also pointed out that the cover picture looks very like Charlbury in this socially-isolating period!! *Six Years in a Country Town* is still available.

I find them amusing and although it is best to imagine Professor Leslie's voice when you read them, I thought they might make a bit of light-hearted reading, especially for our newer residents.

1990 Issue 1

Up to Friday 24 August: nothing seemed to happen. We will go to press in the hope that there is nothing to report.

September: The Street Fair was opened by Dame Acne Beverage, a personality who gave some bewilderment to newcomers to the town, but everyone knew that it was Paul Curtis, a member of Charlbury Amateur Dramatic Society.

1991 Issue 3

Spring: on 16th January Malcolm Rifkind opened the last section of the M40. We in Charlbury naturally ask what use the M40 can be to us. If readers have any

advice on how to get onto the M40 from Charlbury, will they please inform us?

Shopping in Charlbury: On Saturday 8th December 1990, truth came to Charlbury. Snow began to fall and by the end of the day it lay thick on the ground. In these circumstances it was clear that many of our fellow citizens decided that they must do their shopping in Charlbury rather than go elsewhere. It then became apparent that Charlbury has lost many of its shops in recent years. This situation may be summed up on the day of the snowfall by the remark made by one lady who discovered that all the bread had been sold: "... and they haven't even restocked their shelves. I do wish we had done our shopping in Cheltenham yesterday."

Latest news: there is a Chinese proverb which says that 'No news is good news'. There was no news at the beginning of March.

1991 Issue 4

Latest news – shoes: Mr W intends to hold an exhibition of his shoes in the Corner House ... shoes will be available for purchase. The Editor has bought two pairs of Mr W's shoes and says they are very comfortable.

Vandalism: on the night of 31 May a small car was lifted onto its side in the Spendlove car park. Mr G of ... wishes to convey his opinion to the perpetrators of this act, which the Editor himself will not repeat.

1991 Issue 7

Foreigners in Charlbury! There must be a lot of foreigners in Charlbury at the moment. The Editor has noticed ... that they leave their visiting cards about the place on pieces of tin. Some are from Germany like Holstein and Heineken. Some must come from Eire because they are called Guinness and Sharp. Then there is the Australian, Foster. One frequent Italian visitor is Cornetto, but he leaves his name on a piece of paper. Our readers will no doubt think that what the Editor has written is a load of rubbish. They are quite right!

1992 Issue 9

W... F....: the Editor made inquiries this morning and obtained confirmation that Mr WF is in the Chipping Norton Hospital,

because someone had been to visit him there. We all wish him well.

1993 Issue 12

Charlbury Rumour: I was coming out of the Spendlove Centre one morning and an acquaintance said "Am I glad to see you! I was told you had died!" How this rumour got round Charlbury I do not know, but one of the purposes of CHARLBURY NEWS is to put local gossip on a scientific foundation. It should be noted therefore that, if a clanging noise is heard in Church Street, it is not necessarily RF Leslie kicking the bucket. It is normally the sound of a delivery at The Rose & Crown.

Man from Mars: at Christmas we were troubled by a man, who was clearly a vagrant. He won our sympathy largely because he appeared at a festive season. When he was asked where he came from he said 'From Mars!' for that reason he became known as THE MAN FROM MARS.

1993 Issue 13

Latest news: Balloon, 6 June:

drinkers at the Rose & Crown came out of the bar to look at a balloon in the sky above them. At 2045 hours they were able to point out to AF ... that he had driven up Sheep Street the wrong way. His error was indicated to him by the Editor, the Chairman of the Parish Council and other councillors. AF was clearly shocked by his error. He clearly had had a lapse of memory.

1993 Issue 14

Seat in Church Street: Now useless.

A seat was erected in Church Street next to The Rose & Crown for people waiting for buses. We all thought it was put too high up Church Street. Now doves have proved us right. It is covered with bird droppings and no one can sit on it.

1994 Issue 16

Mysterious hole: a farm worker was surprised to see in front of him a very large hole. He examined the hole and could not see the bottom. It is 6 feet across and probably up to 100 feet deep. Dr GW, our local geologist, has offered to examine the hole and give an opinion on its origins.

1994 Issue 17

Police Report by PC AS. I had

started my summer round of cycling proficiency at Charlbury School and was handing out leaflets on crash helmets, when one boy said "Can I have one?" I replied "But you have one already." To that he replied "Yes, but I want it for my gerbils to chew." Bless him!

Charlbury People. JE C. J C had the misfortune to suffer an accident when he was doing a job at A rung of the ladder on which he was standing gave way and he fell eight feet to the ground and broke his left ankle. Thus, if you see him with plaster on his left leg, you will know what has happened.

1995 Issue 20

Charlbury gossip. It is said that once a rumour starts at the Co-Op it becomes unrecognizable by the time it gets to the Post Office, but a recent example makes that statement seem only a slight truth. A Charlbury resident recently won a small prize on the State Lottery, but the figure was enlarged into £250,000 in a short time. He is now congratulated with broad grins by people whom he does not know.

In 1996 Professor Leslie gave up editorship of the CHARLBURY NEWS... *"not because I am tired of doing it but simply because I am now 78 years old, and have become very tottery. I need to take a walking stick with me these days lest I fall over in the street. I have done that once and I have done it indoors."*

We are grateful to Professor Leslie for implementing a town newsletter, even if it sometimes seemed there was no news!

Lynette Murphy took over editorship and so evolved the Charlbury Chronicle with which we are all familiar. Under first Lynette's and now Susie Finch's editorship the Chronicle has gone from strength to strength and we are all very grateful to them for keeping us in touch with Charlbury life. This article was going to be published in the last issue (the Lockdown Issue), however Susie asked me to hold it over until the next issue as the Chronicle was full – obviously Charlbury has more news these days!!!

Pat Court



CHARLBURY MUSEUM

The History of the Corner House

Street Fair this month will provide welcome entertainment for us all and also raise much-needed funds for the Corner House. What is the history of this iconic building in the town centre?

In 1447 the site was occupied by a Richard Brown, remembered in the name 'Brown's Lane'. However, the oldest parts of the present building are the kitchen, the Oliver Watney room above, and the impressive cellar beneath them. These date to the 17th century and probably fronted on to Brown's Lane. The Oliver Watney room has long weaver's windows, designed to let in more light for a weaver or glover. At some later date the house was altered to front on to Market Street.

In 1722 William Spendlove bought the house and tenement. The Spendloves were a successful Quaker family in the town. William and his wife Mary had 14 children, though sadly only 3 survived infancy. William made many alterations to the building, largely creating the frontage we see today. He may well have added the gazebo at the top of the house – local people nicknamed it the Observatory and at that time Brown's Lane was known as Observatory Street. The gazebo survived into the late 20th century before being removed.

William & Mary's third son, Robert, was born in the Corner House in 1726 and inherited it on his parents' death. He and his wife Elizabeth had no children and the house and other extensive property passed to Elizabeth's sister Mary Bowly and her sister Rebecca. Have you noticed the fire mark on the front of the building? This dates to around the 1820s and shows the building had insurance against fire. In the museum we have a piece of attractive floral Victorian wallpaper dating from these years. The family also left their graffitied initials on the stonework of the building.

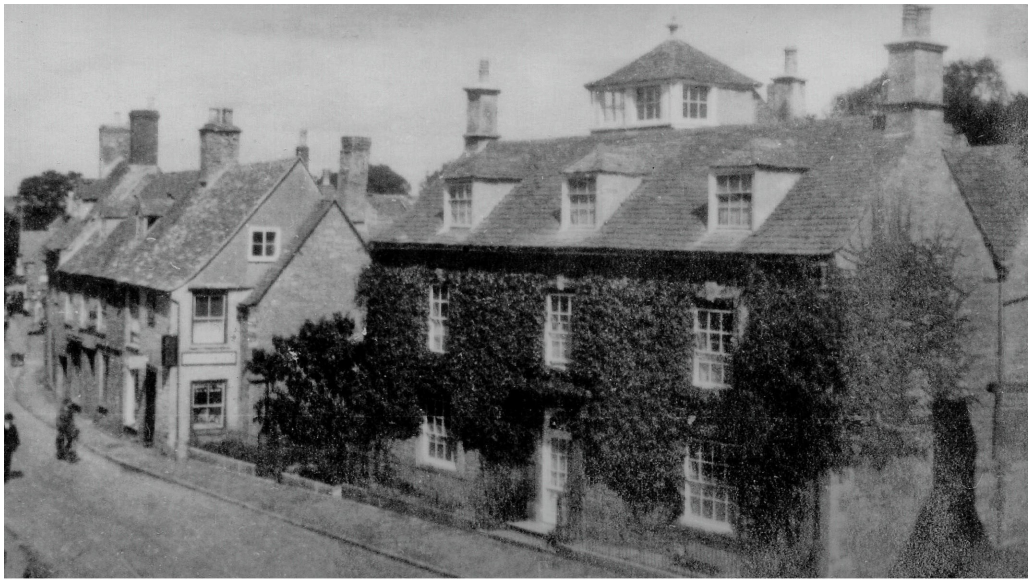
The Bowllys sold the Corner House in 1910 and in 1938 Mr. & Mrs Morris of Lee Place bought it. They altered the building to become a social centre, with a girls club and other activities. They probably created the large upstairs room, now named the Morris Room to commemorate their gift to the town. When war came, the Morris Room became the British Restaurant, catering for both service personnel and civilians, including school children and evacuees. In March 1944 they provided 1581 dinners, 516 teas and 2893 school dinners. They were particularly busy in the run up to D-Day when many servicemen were stationed nearby.

At the end of the war the Morris family formally gave the Corner House to the town, for recreation, education and entertainment and with plans for a War Memorial Hall to be built in the garden. The Morris Room was used as the child health clinic for many years and until the hall was opened in 1956 continued to be used for dances and parties. Following a very successful historical exhibition in 1949, the museum developed as part of the Charlbury Society and found a home in the Corner House where it remains today. The Library opened here in 1949 and stayed over 65 years before moving to the new Community Centre. Hopefully with your support the Corner House will continue to provide a meeting place for the town for years to come.

The Museum will be taking part in the Street Fair – look out on the website for details nearer the time and be sure to look out for us. There is always more to learn about the town's history.

We very much hope to reopen our doors and welcome you back in 2021.

Judy Dod for Charlbury Museum



The Corner House showing the observatory on the roof. The rooms in the building are named after significant people from Charlbury's history, among them the Quaker Anne Downer, Jesse Clifford, headmaster of the British School, and John Kibble, local stonemason and historian.



All types of tree work
carried out including
stump removal &
hedge cutting.

Contact us today
for a free quote
NPTC Qualified & fully insured.

📧 kptreecare.co.uk
✉ kptreecare@outlook.com
☎ 07788 289344
📞 01993 891526

Proud members of
Checkatrade.com
Where reputation matters





- Kiln Dried logs
- Seasoned Logs
- Stacking Service
- Barrow Bags
- Bulk Bags
- Log Nets
- Kindling Nets

Order Online:

www.jagtimber.co.uk

Tel: 01993 868001



GIVE LOVE IN A BOX

Christmas will soon be here and we invite you to fill a shoebox with gifts for needy children and families in poverty stricken areas of Eastern Europe. Details are on the teams4u.com website. If you enjoy crafts, there is a video with ideas of things you can make. Knitted and crochet items such as hats, scarves are mittens etc are also most welcome. Cover your box and lid separately with decorative paper and decide whether you wish to fill it for a child or family. Please include a donation of £2.50 to cover transport costs. If you need help covering or obtaining a box, please phone 01608 810130. Surplus empty boxes also welcome.

Leaflets giving all the information will also be available at the Corner House, the Community Centre and in the churches. Collection date will be Saturday, 7th November at the Baptist Church, Dyer's Hill, between 10am and 12 noon or phone to make an alternative arrangement. Any alterations to these details will be notified on the Charlbury website and local notice boards.

Joan Belshaw
01608 810130



High /Low Impact, Mixed Abilities

Dance-inspired exercises to music to strengthen your cardiovascular system, tone your body and improve balance and co-ordination, because exercise should be fun

Charlbury Methodist Church Hall

Mon & Wed 7-8pm, Tue 10.15-11.15am

Contact Louise Barnes on 07879 685579

123dancercise@gmail.com
to check availability



The Chartered Institute for the Management of Sport and Physical Activity (CIMSPA) Personal Trainer, Senior Activity & Health Practitioner, Group Fitness Instructor.



Quality work at an affordable price by friendly reliable tradesman

All roofing repairs and problem leaks
Valleys repaired or renewed. Gutters cleaned, repaired or replaced. Fascia and cladding in UPVC. Repointing a speciality Slating Tiling De-moss etc

All work guaranteed

Tel: 01993 868557 Mob: 07833 772080

An amazing year of fundraising

So far this year, CRAG has raised over £15,000! We cannot thank you enough for all your continued support in such challenging times, whether through regular donations, contributing to specific campaigns or supporting our events. All the money we have raised has been sent to organisations dedicated to alleviating conditions for refugees in Europe. Our main beneficiaries have been Help Refugees, Refugee Community Kitchen, and Attika. We have also made donations to smaller organisations and we continue to lend our support to Asylum Welcome in Oxford.

The Covid-19 pandemic has made the plight of refugees throughout the world even more drastic. We are determined to do what we can to help and are therefore launching a special fundraising campaign. To kick this off, for those of you who have been missing the tea concerts, we have a very exciting surprise for you.

A CRAG virtual tea concert

During lockdown, 12 internationally renowned musicians well known to our CRAG audiences, including Margaret Fingerhut, Alastair Ross, Philippa Davies, Dorian Ford and Maggie Cole have donated special recordings to raise funds for CRAG. These have been combined into a fantastic concert of music ranging from Purcell to jazz and accompanied by beautiful videography and photography of Charlbury and Oxford.

This is NOT TO BE MISSED! It is a veritable treat, which you will be able to enjoy again and again! A link to the concert can be obtained by visiting www.justgiving.com/campaign/crag-

concert and making a minimum suggested donation of £10.

It will be a perfect accompaniment to a freshly brewed cup of afternoon tea and a slice of your favourite cake. So, brew up and enjoy!

Raising funds to feed people


We are enormously grateful to everyone who donated for recipe booklets during lockdown. Altogether, the print and digital versions have now raised almost £600 for the Refugee Community Kitchen whose volunteers have now been able to resume their work in France and the UK providing over 1000 nourishing meals a day for displaced people.

Many of you have also generously contributed your recipes and photos for CRAG's next digital publication 'Cracking Cakes & Brilliant Bakes'. This new booklet will feature over 20 recipes for the mouth-watering teatime treats enjoyed by so many at our concerts, cafes, and tea parties. It will be coming out of the oven at the end of August and available to download for a suggested minimum donation of £5.

In the meantime, 'The Full Mezze' (12 delicious vegetarian recipes with a Middle-Eastern twist) and 'The Fantastic 5' (Five one-pot, plant-based recipes from around the world) are still available. Just email recipes@charlburyrefugee.org.uk and we'll send you details about how to get copies.

Jon Carpenter

A VIRTUAL TEA CONCERT
IN AID OF **CHARLBURY REFUGEE ACTION GROUP**



1. Philippa Davies - flute
Jan Willem Nelleke - piano.
2. Alastair Ross
harpsichord
3. Margaret Fingerhut
piano
4. Sebastian Comberti
cello
Maggie Cole
piano
5. Dorian Ford - piano
6. Gill Ross soprano
Alastair Ross - harpsichord
7. Somerville College Choir
conducted by Will Dawes
8. Brian Boothby voice
and guitar
9. Jenny Mahler
Voice and keyboard

To obtain a link to the concert please make a minimum donation of £10 to CRAG at <https://www.justgiving.com/campaign/crag-concert>

Thinking of
selling your
artwork?

Mallams
1788



Mallams specialist Max Fisher, is available to give **free** confidential valuations on any piece(s) you are considering selling at auction

Home visits also available

Enquiries: 01865 241 358 or
max.fisher@mallams.co.uk
www.mallams.co.uk

Salon Copenhagen

3 Pendle Court, Pond Hill, Stonesfield OX29
8PZ

Telephone (01993) 891101

Unisex hairdressing & Nail Bar

Easy Free Parking

*All aspects of hairdressing undertaken
by our experienced professionally
trained stylists*

Our Nail Bar offers OPI Manicure,

Pedicure & Gelish Polish

Ear Piercing also available

Open Tuesday to Saturday

Find us on Facebook

Charlbury Society

At the time of writing, it is impossible to say whether we shall be able to resume our talks in the Memorial Hall starting in October, but rest assured we have an excellent series planned for the coming season, and we would like your views on holding virtual lectures by Zoom or similar if we are unable to meet physically. However we could observe social distancing in the Memorial Hall if necessary and safe, and are lucky to have access to such a large venue. We shall shortly be asking current members to let us know their views on this, accepting that it is difficult to know how things will feel by October.

May I remind you that from now on we shall hold meetings on the first Thursday of the month, which seems to suit members better and is less likely to clash with other Charlbury events. There will be publicity in key places in Charlbury and surrounding villages regarding our programme.

The Historical Research Group were continuing to work on transcribing the Manor Court Rolls (MCR). These give details of property transfers in the town, but annoyingly very rarely identify the exact property, and they are hoping to obtain old deeds that people have kept in their houses. The course which ran in February highlighted research material- maps, wills, inventories, memoirs, old photographs etc, and discussed what could or could not be added to the town's history.

It was very well received by the nine new people who came. But then, just as plans were made to build on this enthusiasm, lockdown occurred.

The first planned talk in October will be by Neil Clenell of the Wychwood Project, with an update on recent work and rewilding particularly during lockdown, and plans for the future. Following that

we have asked Liz Woolley to talk on children's experiences as evacuees in WW11, and then the Historical Research Group with an update of their work. Dr Janet Dickinson will give her postponed talk on Sir Henry Lee and the Virgin Queen sometime in early 2021. Please look out for your copy of the programme and membership form which should be with you around the time you receive the Chronicle.

Meetings will be held from October to May either by Zoom or in the Memorial Hall at 8.00 pm on the first Thursday of each month.

Outings

The Society also organises visits to places of interest both locally and further afield. Although we have had to cancel our much anticipated trip to Owlpen Manor and also to Ditchley Park, for those who have not been there, these will take place as soon as appropriate.

We held a committee meeting in the garden of one of our members in July, and have made new plans for the forthcoming season, keeping our options open.

We are very keen to hear your views on our society, making it as inclusive as possible, and encouraging new members through you.

Do please contact any of the committee, with ideas and suggestions going forward over the rest of this season, and we shall keep you updated with plans for the autumn, both by email and on our Charlbury Society page on www.charlbury.info, in the Community/Social section.

Keep safe everyone

*Nikki Rycroft
Chair, Charlbury Society*

A Days Life: Joan Belshaw, preschool and school teacher and needlewoman

I had talked to Joan some years ago about preschools. Many women had been at the start of the preschool playgroups movement, (the National organisation is now known as the Early Years Alliance) and so I began by asking her about her involvement with them

In the 1960s, we lived near Bognor Regis. I was more or less in at the beginning of the Preschool Playgroup Association. Provision for very young children was very inadequate in those days, for instance there was only one state nursery for just 30 children in the town. Mothers all over the country were starting groups in church and village halls to provide nursery education and playgroups for their young children. After my degree at Aberystwyth I did a nursery education course and having children myself I then set up two groups in Bognor.

When we came to Charlbury in 1971, I became supervisor at the Preschool Playgroup here. It was held in the upstairs bar of the old White Hart, which must be unique for any playgroup! The bar was on the first floor in what is now White Hart Cottage. You reached it via an old staircase at the back of the building. Then the preschool moved to the Old Grammar School, which was much better, especially as it has an outdoor space.

I stayed there until about 1976, when I started teaching French at the Spendlove School. I was doing supply teaching there when the school closed in 1982. A few students had only a few months remaining, so they stayed on in Charlbury, and we taught them in the former headmaster's house on the Playing Close.

I loved teaching, so I did a business studies course and taught secretarial skills. During vacations I also taught English as a Foreign Language. People

would come to stay with us from one to three weeks, I would teach them in the mornings and they were then free for the rest of the day. I usually took one person at a time. The adults who came included an eye surgeon and an air traffic controller.

I worked out a course to suit each person. For example, some wanted to know how to get on in meetings, what all the different terms were, how to draw up an agenda and write minutes. If they were working for a charity, how to set about getting grants. Most of my students came from Spain, France and Italy.

I was brought up in Twickenham, and met Hugh at the local Young People's Christian Fellowship. We were married in 1962 and moved to Surrey. When Hugh got a job at Oxfam, we found that a number of the staff lived in Charlbury. So we came here in 1971, and have lived in the same house ever since. Sandford Park is an open plan estate and we are able to enjoy each other's gardens as well as our own and in recent years a few wild orchids have started to appear!

We have four children, two boys and two girls. Our daughter was already a Brownie when we came here, so I was asked to help out and eventually became Brown Owl. All these years later, women still come up and speak to me about that time. Hugh and I have three grandchildren and two great grandchildren, but sadly our younger daughter died in 1996. Maria, our elder daughter, lives in Witney as do the grand and great grandchildren. Our older son Richard lives in Cornwall, and our younger son Jonathan is in Leicester.

We have always loved travelling, and when the children were growing up, we used to do home exchanges overseas for our holidays and continued doing it when they left home venturing further afield to Canada, America and Australia. We also started working holidays with the RSPB and the National Trust mostly involving gardening. We did a stint at Lindisfarne, taking people round the castle. We went

several times to Clevedon Court in Somerset, to look after it while the custodians were on holiday, making sure the place was locked up at night etc.

When Hugh retired, we had the whole year to choose where we went. We read an article in the Saga magazine about the Peace and Hope Trust, asking for volunteers to travel to the eastern side of Nicaragua to help with building projects in Bluefields, a town on the coast. It is a very poor community, lacking a lot of basic infrastructure. To get there, we had to fly to Managua and then fly again to Bluefields as there was no road across the country. We went out there several times. We joined teams helping to build a vocational centre - it's the only time I've used a cement mixer! Some of the children lived round the rubbish dump and gathered what they could to sell, so we helped run a holiday club for them and built a concrete path so that they could get to the school without becoming covered in mud.

We belong to the Baptist Church family and spent a month helping at a school for some of the street children in Kolkata. In later years we went to Nepal where we joined the International Nepal Fellowship for three months at the Green Pastures hospital in Pokhara and subsequently in Kathmandu teaching in the International Study Centre. Other organisations included projects running a play scheme for children in a township in Port Elizabeth, helping with ideas for villages starting nursery education in Gambia.

In Bali fishermen were catching tropical fish to export to the USA. Their methods were destroying the coral. We were part of a marine conservation group and went to help the fishermen to use environmentally friendly methods of fishing and to rebuild the damaged corals. These were just a few of our experiences, we met some amazing people and learnt such a lot.

We don't travel much now. I was recently diagnosed with Parkinson's disease so anything too energetic is out. I help with a Christmas shoe box scheme and try to

encourage children and others to take part. I have always been very keen on crafts, especially needlework. I belong to Burford Crafters, and we meet twice a month, taking along our projects that we are working on.

I now do a lot of patchwork, making small cot and lap quilts, cushions, small toys, pencil cases and bags etc. I put the pieces together by hand but do the quilting on the machine. We have stalls at various events and sell our work for charity.

I'm a patchwork enthusiast!

Joan Belshaw was talking to Barbara Allison July 2020. We were socially distanced.



DIRTY CARPETS, UPHOLSTERY, RUGS



Most carpets dry within the hour

**Unbeatable results, removes almost all spots & stains
call**

GRIMEBUSTERS

01993 868924 01865 726983

www.grimebusters.co.uk



The National Road Verge Campaign

Plantlife International is a wild plant conservation charity. It is Europe's largest conservation organisation dedicated to wild flowers and other flora. It has no government funding and has over 11,000 members.

In 2019 Plantlife introduced a Road Verge Campaign to monitor and conserve wild flowers along the roadsides of the UK. During the campaign Plantlife sent guidelines on best practice to county councils throughout the UK for the management of lowland and upland grass verges. The response for county councils has been very positive.

The charity owns nearly 4,500 acres of nature reserves and other open spaces. It works across the UK and internationally to raise the profile of wild flowers and fungi species, and the wealth of wildlife they support. It was influential in the forming of the Global Strategy for Plant Conservation in liaison with Planta Europe—a pan-European network of conservationists.

For a number of years now WODC has greatly reduced the amount of cutting back along the road verges—leaving it also later in the summer when the plants have died back to set seed which enables the wild flowers to proliferate the following season.

In previous years WODC Highways Department have cut the verges outside our dry stone garden wall (on the Slade) three or four times during the summer. Last year the cut came in mid September when most of the wild plants had gone to seed. This highlighted for me the importance of cutting at the right time. During the summer and early autumn I counted around 25 different species of wild flowers along our verge. Only a few I can list here:

Primrose, dandelion, cow parsley, shepherd's purse, milk thistle, plantain,

herb Robert, dock, alkanet, greater celandine, nettle, nettle-leaved campanula, fox and cubs, also ragwort—a much maligned plant (see Wilding by Isabella Tree), although it is poisonous to cattle and horses—the flower is hugely valuable to the insect population for its nectar and pollen—playing host to over 177 insects—including butterflies, moths and different species of bee.

Over 700 species of wild flower and nearly 45% of our total flora are found on UK road side verge. Over 97% of wild flower meadows have been lost since the 1930's. Since the 1990's there has also been a drop in floral diversity on our road verges alone.

The Oxford County Ecologist is publishing on-going data on 35 designated sites which are being monitored. Twelve of these verges are in the Wychwood area. But other factors have been of concern lately with the laying of Broadband cables which has caused a lot of damage to the road verges, which will take a year or so to recover.

The Wychwood Project Director says "As well as their ecological value, road verges can play an important role in bringing the countryside into people's everyday lives. Verges in our area make a major contribution to the beauty of the Wychwood landscape and are one of the most viewed habitats by both locals and tourists.

Locally, if you are interested in our wonderful flora, you can join the Wychwood Flora Group which monitors and helps to protect rarer species of wild flower which grow in the Cotswold area. You can also join Plantlife to help support this very important work.
www.plantlifelovewildflowers.org.uk

Susan Strachan



Probus in Lockdown Prepares for Better Times Ahead

In these difficult times many of us are looking forward to being able to get together with people again and be able to do things like going out for a meal listening to interesting talks and visiting attractions. This is exactly what we do in Probus and although we are not currently able to meet we will be getting going again just as soon as we can.

New members are always most welcome and it is a great chance to meet new people and find new friends. We are a group of retired men from a wide variety of backgrounds and when activities restart we will meet on the first Wednesday of the month at Witney Lakes.

It's a great chance to have a good lunch and listen to interesting talks on a wide range of subjects. We have very varied experiences and it is always good to share these with other members when we all get together before the lunch.

When we restart we have a varied programme of talks to look forward to. Speakers are carefully chosen with plenty of opportunity for questions and discussion. Details of the talks will be advertised and available on our website at www.charlbury.info/community/73

We also arrange a number of outings throughout the year which include concerts and visits to attractions for members and guests.

Looking forward, plans are in hand for a number of excursions which include an option for the matinee of the musical "Magician's Elephant" at the Royal Shakespeare Theatre, Stratford upon Avon, on the day of their Victorian Christmas Market Festival and a special visit in January to the "Battle of Britain" bunker in Uxbridge. Stratford is also booked with a Restaurant barge hired the

day of the annual "River Festival" in July next year.

Last year we visited the SS Great Britain, Brunel Museum and the Bristol Blue Glass Factory. On the cultural side we went to the Watermill Theatre near Newbury for a production of Cole Porter's 'Kiss me Kate' and also a City of Birmingham Symphony Orchestra performance of works by Haydn and Mozart.

Although membership is currently limited to men there is no restriction for guests. Maybe you have recently retired or have moved to Charlbury in which case this is a good chance to meet people in a relaxed and friendly atmosphere. If this sounds like something that you may be interested in then we would like to invite you to come along. In addition to the lunch and talk there is always a draw to win a bottle of wine. You may contact any member or the secretary (see below) and your first lunch is complimentary which will allow you to meet us before you (hopefully!) decide to join.

Members are encouraged to propose new ideas. Last year we organised at Charlbury Bowls Club a well attended barbeque with the Ladies Lunch Club. We have an informal approach and a relaxed attitude to dress and ties are not expected, and smart casual wear is fine. The cost of lunch is currently £20. If you are interested in joining or simply want to find out more about us please speak to any Probus member or contact our Secretary, Mike White, Ashmead Cottage, The Slade, Charlbury, OX7 3SJ or mike.ewhite7@gmail.com.

Information is also available at www.charlbury.info/community/73. We do hope that you will consider joining us and look forward to being able to restart our activities as soon as possible.

Tony Merry



The Royal British Legion – Charlbury Branch

The Branch AGM will be held in the War Memorial Hall at 8.00pm on Thursday 15 October 2020. All members are encouraged to attend. Anyone who would like to join the Branch is most welcome to attend.

The Poppy Appeal Coffee Morning will be held in the Corner House on Saturday 31 October 2020 with raffle, cakes and poppies for sale. For further information please contact Jane Parsons on 01608 810822.

The Annual Band Concert will be held in the War Memorial Hall on Friday 6 November 2020 with the fantastic "Accidentals", once again. There will be a raffle, light refreshments and a licensed bar. Details may be obtained from the Branch Secretary on 01608 810822 or from posters in the usual places nearer the time. Tickets may be purchased in advance from the Cotswold Frames or on the door. All the proceeds will go to the Poppy Appeal and everyone is welcome, members and non-members alike.

Remembrance Day Parade and Service – Sunday 8 November 2020. The Charlbury Parade forms up at the Spendlove Car Park at 2.30pm and the Service is at 3.00pm in St. Mary's Church. Everyone is welcome to join the parade and/or the service.

The parade will be led by Pipers and Drummers of the Scots Guards Association [Berks, Bucks and Oxon Branch] under the direction of Pipe Major Steve Duffy [details correct at time of going to press] and commanded by the Charlbury Branch President, Major Nicholas Potter [late Scots Guards].

The salute will be taken by Mr. Derek Fowler, a lifelong resident of Charlbury and Chairman of the Charlbury Branch. Derek served with the Royal Army Pay Corps during National Service. Wreaths

will be laid by the Legion, Charlbury Town Council, Thames Valley Police, Oxfordshire Fire and Rescue Service and Charlbury WI.

After the Service and Parade tea and biscuits will be available for all marchers, Legion members, serving and ex-serving service personnel, in the War Memorial Hall.

The rehearsal for all standard and flag bearers, wreath layers and readers etc will be at St Mary's Church at 6.30pm on Thursday 5 November 2020.

The Poppy Appeal

Poppies will be on sale in and around the Town from 24 October to 7 November and at Charlbury Station on the mornings of 27 October and 3 November. Pam Rolls and Ian Parsons are our Poppy Appeal Organisers for Charlbury and the surrounding villages. Anyone who would like to help with the Poppy Appeal in any way is asked to get in touch with Pam on 01608 810042 or Ian on 01608 810822.

The National Two Minutes Silence

will be at 11.00am on Wednesday 11 November 2020. Please support this small yet significant event.

Trip to the National Memorial Arboretum

The Branch is planning a coach trip to the N.M.A. at Alrewas in Staffordshire in summer 2021. Expressions of interest to Jane Parsons on 01608 810822. More details to follow, non-members welcome.

All the above arrangements are provisional and will only take place if government guidelines allow.

For more information about the work of the Royal British Legion, becoming a member or for assistance, please contact Nick Potter [Branch President] on 01608 810388, Derek Fowler [Branch Chairman] on 01608 811706 or Jane Parsons [Branch Secretary] on 01608 810822. Any queries about subscriptions should be made to the membership Secretary, Barry Canham on 01608 811176. The telephone number for the Royal British Legion Contact Centre is 0808 8028080.



Coffee break page

Compiled by Pat Court

CHARLBURY

How many words of 4 or more letters can you make from the word "Charlbury".
No answers – just see how many you get. I got 41!!

DINGBATS

GOOD

1.

Pot00000000

2.

ACRIML

3.

You the past

4 .

O_er_t_o_

5.

XQQME

6.

XIST
N
G

7 .

revirdtaes

8.

cut cut cut cut

9.

xmascara

10 .

lettuce
cucumber
tomato
onion
cress

11.

ENTURY

12.

Answers on page 42



CHARLBURY
Community Centre

What an unusual spring and summer we have had! The Community Centre has diversified in so many ways, from Coronavirus support, to Zoom exercise classes, setting up a youth team to put in raised beds, offer gardening services and help for children with school work, loaning out puzzles, selling DVDs and keeping our coffee club members in touch with each other. We even managed to fit in a Summer Kids Club in August, run by our new Youth Co-ordinator, Charlotte Hansford.

In July things gradually opened up, starting with the take-away café, then the gym reopening and racquet sports resuming, albeit in a limited way. In the meantime, there was lots of table tennis, pickleball and tennis being played outside. We are still a long way from being back to normal in terms of use and of income, as all these things have to be done in smaller groups than before, but it is nice to see sport happening again in some form.

With the café tables removed and the library shut it seems a bit empty inside the centre, but at least we have plenty of ventilation so it feels quite safe in there. The air handling unit does not recycle air (its efficiency lies in it removing heat from outgoing air and using that heat to warm fresh air coming in), so when we need to turn that on it will be a safe system in these new circumstances. For the summer we have been using the natural ventilation of open doors and windows.

We love how adaptable Charlbury has been, for example with the coffee club moving outdoors to the Playing Close and sitting two metres apart and being served by the team of young people. We love the collaboration that has been shown, for example the Corner House lending chairs for the above coffee club and the Community Centre helping to sell books and DVDs in aid of the Corner House. Or St Mary's Church running their excellent Give and Take scheme from the Community Centre lobby. And all this

collaboration could culminate in the Cornerstone Project, helping lots of people in the longer term and bringing organisations together. (See the separate article on the Cornerstone Project for more details of this)

Helping Charlbury to stay fit

Many of you have been participating in Jason's online Zoom exercise or line dancing classes, which have helped to keep us healthy during lockdown. At the time of writing we do not know when these will be moving back indoors, but probably one at a time, with the smaller ones first. One of the line dancing classes moved indoors on 4th August as there is plenty of room to maintain social distance in the sports hall. Please check the website, www.charlburycommunitycentre.org.uk, to see what is happening and where - we plan to continue offering three circuits classes a week in one form or another:

- Wednesdays, 9-10am – Lean Gym, a circuits class
- Thursdays, 6.30-7.30pm – Super Circuits
- Sundays, 10-11am – Sunday Family Circuits
- One-to-one "Motivational Gym" sessions and personal training sessions are also available with Jason

On our website you can also find a link to a Strength and Balance session, run at the Community Centre by Louise Barnes through Age UK. You can watch and follow this session for some gentle exercise until she can resume the classes.

We hope you all stay safe and well and that we see you back in the Community Centre soon. Don't forget that help with shopping is still available, as there will still be people who need to self-isolate for whatever reason. Please continue to ring 01608 811878 if you need help.

*Tanya Stevenson
Charlbury Community Centre*



Charlbury Meals on Wheels

Throughout the lockdown, Charlbury Meals on Wheels has continued delivering hot meals every Tuesday to residents of Charlbury, Chadlington, and Stonesfield. While the team was missing some of its most dedicated volunteers who themselves have had to self-isolate, a core group of two chefs and six deliverers have kept the service going to over 20 households.

Meals on Wheels was also fortunate to have received over 200 extra frozen meals and desserts from COOK with the help of the Clemence family. These meals were delivered alongside hot meals so recipients had reserves in case they were unable to get supplies. A

special thank you to Cook and the Clemences.

We deliver each Tuesday at about 12 noon. The price is £3.00 per meal which includes a main course, vegetables, and pudding. If you would like to receive a meal or would like to volunteer, please contact Margie Glasgow at mglasgow@theridgegroup.com or call 01608 819 253.

We look forward to having our full volunteer team together again soon.

Margie Glasgow



Supplying Charlbury since 1999.

Traditional Christmas Turkeys

We rear a limited number of
“Fresh from the Farm” Bronze Feathered Turkeys.

Matured slowly, dry plucked and hung for full flavour.

Available to order now!

Tel: 01608 810250

Text: 07806821246

Email: conygreefarm@gmail.com



*a welcome day
out for us all*

12 September

Fourth Great Charlbury Children's Bike Rally

now with
MASS PICNIC AND BIKE GYMKHANA

On Saturday 12 September the roads of Oxfordshire will again see hundreds of cyclists and walkers taking part in the Oxfordshire Historic Churches Trust's annual sponsored Ride and Stride. Whatever the weather they visit as many churches as they can to raise money to help maintain Oxfordshire's churches of all denominations.

But Charlbury again offers its own junior version.

– a bike rally round the five churches of Charlbury for children of Primary School age. This year it will be even more special. The route will be extended to end up at the school playing field. There from about 12.30 pm the Charlbury School Association invites families and community to bring their own picnics and watch the children take part in a 'bike gymkhana', a series of cycling games to improve skills and confidence organised by the Windrush Bike Project.

The Rally starts will be phased between 11.45am and about 12.45pm to give a measure of social distancing. If they can, parents should sign their children in from

10 am at St. Mary's and book a start time.

There is a suggested minimum donation of £3 per child or parents can provide the URL to the child's fundraising page. Details on the Charlbury website and the OHCT websites. The Rally raises money for Charlbury School and for OHCT.

We are also recruiting marshals to help with the traffic on the children's route.

They will only be on duty for about an hour and a half that morning. If you would like to help this very Charlbury event please contact Alison Eastwood 0787 089 3223

(stableyardalison@gmail.com) or Basil Eastwood 0796 997 0003
(basil.eastwood@gmail.com)



Charlbury Town Football and Sports Club

Most people who have seen the new clubhouse being built over the past two years will now be wondering, "when is that place going to be open?"

Well, the answer is very soon! ... September 2020 is our confident estimate.



We have been set back by the Covid 19 Lockdown but our team of volunteers has been working flat out since we could get supplies and deliveries again.

Charlbury Town Football and Sports Club

There are some heroes in that team but they prefer not to be named. Nevertheless, we insist that we will put up an 'Honours Board' inside the club when we are open to give public thanks to all those people who have donated their time or cash.



Of course, none of this would have been possible without the big capital grants from the Town Council and the District Council, which got the clubhouse started.

They really kicked this project off!

Charlbury Town Football and Sports Club

Community Amateur Sports Club Status

We have "Community Amateur Sports Club" status with HMRC which declares that we are a 'not-for-profit' organisation. This means that, when we've covered our costs, any surplus goes to improvement of the Sports facilities on Nine Acres Playing Fields.

THE BENEFITS OF MEMBERSHIP ARE:

- 1) Open access for families
- 2) The cheapest prices in town
- 3) The only live SKY Sports TV in town (on the big screen)
- 4) Games facilities which are not available elsewhere – Darts and Pool (Aunt Sally to follow soon).



MEMBERSHIP Fees

Adult - £15

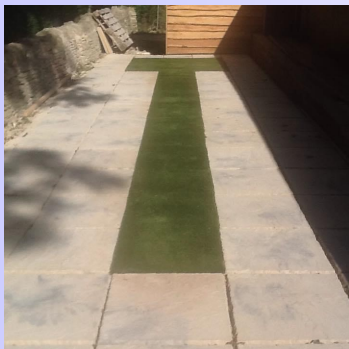
Family - £25

Junior (14-18) £5

Senior (60+) - £5

Charlbury Town Football and Sports Club

As a regulated club we have to insist that our customers are members. (We are not a public house).



Membership is open to anyone in the town.

If you would like to join the Football Club, please get in touch with our Secretary:-

Mandy Cooper

Contact details:

Email: ctfsc19@gmail.com

or

Mobile 07534 097615



You all are very welcome to join our club



Notes from the Cotswold Voluntary Wardens

I normally send details of our guided walks to the Charlbury Chronicle but our last walk was in mid-March, just before everything stopped. Our work parties too were suspended. All this when we have had the best spring weather for a long time.

One of the features of lockdown has been the encouragement to walk and it has been a delight to see so many people out on the Public Rights of Way enjoying the countryside, particularly family groups. Many wardens have been out and about too making notes of those places where some improvements need to be made and reporting these to Oxfordshire County Council. This is something any member of the public can do by using the OCC website and finding the countryside section where there is a link to reporting footpath problems. Even in lockdown OCC have been responding to some of these reports where they are deemed to be a hazard.

As lockdown eases, the Cotswold Voluntary Wardens are eagerly returning to looking after the countryside. The way the work parties are run has to comply with government guidelines and some activities may have to wait awhile.

People who may not have used the local footpaths much before have no doubt noticed that generally they are in good condition. This is largely down to the work of the Cotswolds Voluntary Wardens in conjunction with OCC.

Where possible access can be improved by replacing a faulty stile with a kissing gate. The Cotswold Voluntary Wardens are adept at installing these and the only thing stopping them is funding as they have no money of their own to dip into.

A suggestion has been made that organizations or individuals might be prepared to 'Donate-a-Gate' in the same way that benches have been generously donated in the past. Perhaps a kissing gate might be donated in memory of a loved one?

The Wardens' work parties give their installation time freely, but the material cost of a metal kissing gate is £360 including delivery and VAT. These gates are lamb-proof, but dog-friendly, and are expected to last for over 40 years. Also, they cannot be eaten by horses!

If you would like to know more about donating a gate or anything else relating to the Cotswolds Voluntary Wardens please contact cvw.east.chairman@gmail.com

So what is happening to the walks we run and where is the latest copy of our publication the Cotswold Lion?

The optimistic start date for guided walks is September 1st but walks will only run when the numbers allowed in a group is larger. People will have to book walks and give their contact details. The walks are on our website www.cotswoldsaonb.org.uk as is the Cotswold Lion, there is no hard copy but all of the articles you would have enjoyed can be seen online.

Lockdown has helped us all appreciate what we have on our doorstep and looking after the countryside for all to enjoy is what we wardens do.

Rosemary Wilson

Charlbury Church Services - These activities are subject to the latest advice from the government. Check updates on the Community pages on www.charlbury.info



Charlbury Baptist Church, Dyer's Hill

Contact: Secretary (01608 810107)

Sundays Service at 10.30 am. Fourth of each month with Methodists in Fishers Lane

Thursdays 7.30 pm at the church for midweek study/discussion

charlburybaptistchurch@gmail.com

www.facebook.com/dyershill/



St Mary's C of E Church, Church Street

St Mary's Church, Charlbury and All Saints Shorthampton

Full details of all church services are available in the Leaflet or in the Church porch

Vicar – Revd Dr Sally Welch Parish Office (01608 810230)

www.stmaryscharlbury.co.uk



Friends' Meeting House, Market Street

Meeting for Worship at the Friends Meeting House Sunday mornings 10.30am

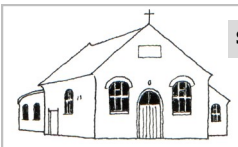
For further details contact Sue Terry (01608 811033) email: sueeterry@btinternet.com



Methodist Chapel, Fishers Lane

Sunday services at 10.30am

Further information from Gill Grason (01608 810154)



St Teresa's R.C. Church, Fishers Lane

Sunday Mass. 9.15am every Sunday at St Teresa's. 9.00am on second Sunday of each month at St Kenelm's Enstone.

Weekday Mass. 9.30am on Tuesdays, Thursdays and Saturdays at St Teresa's.

Parish Priest. Fr Tony Joyce, Holy Trinity, Chipping Norton (01608 642703). Charlbury Catholic Parish Council joint chairs: . Clare Carswell and Mike Flanagan (chair.stteresaschurchcharlbury@gmail.com)

Website: <https://stteresaschurch-charlbury.com/>

Churches Together in Charlbury

When the government decided that places of worship could re-open after the lockdown, it was initially to be for private prayer only. The Muslim community explained that this was of little benefit to them as they already pray privately at home and in the workplace. For them the mosque is a place for people to gather together for worship, instruction and social support.

Although many people find Christian churches helpful places in which to meditate or pray, a church building is also intended as a meeting place. Our churches are gradually reopening but it can be very strange attending a service where the chairs are socially distanced, everyone is wearing masks and there is no singing. We all wonder if things will ever go back to what we had regarded as normal.

The representatives of the Charlbury churches have managed to keep in touch with each other during this strange time, to continue our friendship and the exchange of news. We have even managed to meet in a garden!

Although we have had to put most of our

plans on hold, we will have our usual stall at the Street Fair on September 19th and will be selling our Home Made and Home Grown produce. Volunteers - please get baking, growing and making, in readiness for this and contact your church representative or Rachel Gallagher rg@leahcottage.co.uk Tel. 01608 811568 to arrange drop off or collection of produce. We always look forward to running the stall and making a contribution towards the upkeep of the Corner House and Memorial Hall.

In October we would have been holding a united service for One World Week and our AGM but for the time being gatherings like this are not possible. We are all learning to live with constraints on our activities and to take pleasure in small things – a friendly telephone call or meeting a neighbour out for a walk, the birds and flowers in our gardens, exercise classes and church services on Zoom. We are grateful for everyone who is helping to keep our community alive.

Rosalind Scott - Secretary to Churches Together in Charlbury



St Mary's Services

St Mary's Church – open for services and private prayer

Sunday 8am Holy Communion

Sunday 9.45am Parish Communion – also live streamed on You Tube

Wednesday 9am Holy Communion.

You can access the services on You Tube at St Mary's Church Charlbury or www.youtube.com/channel/UCDb4SzPvqBJTn2VWS9COq_g?view_as=subscriber

This has recordings of our services, and videos of other events: flowers in the churchyard, virtual pilgrimages and Bible seminars.

We hope to start services on second Sundays at 6pm in All Saints Shorthampton on September 13th.

Please look out for more up to date information about services, events and new initiatives on the Charlbury website.



Charlbury Town Council News

COVID-19 update

Support for vulnerable members of the community and others affected by the emergency is still available in Charlbury with much of it being provided by volunteers and co-ordinated through the **Charlbury Community Centre**. For details contact the Community Centre on **01608 811878** or at info@charlburycommunitycentre.org.uk or see the Charlbury website (www.charlbury.info).

A very big THANK YOU once again from the Town Council to all volunteers, local shops, businesses, health workers, carers, refuse collectors, posties, delivery drivers and everyone else who has continued to work in difficult circumstances to help us all through recent months. We also wish to thank West Oxfordshire District Council for the active support they have given, and continue to give to help local communities and businesses through the emergency.

We are also pleased to note that some businesses and town facilities, closed during lockdown, have been able to re-open in a limited way. We thank those involved for facilitating this in a responsible way and remind all users of these facilities that they **MUST** follow the strict instructions of the organisers in all cases.

MANY THANKS also, to everyone in the community for continuing to observe the ever-changing government guidelines on social distancing and for respecting the safety and comfort of others.

As lockdown arrangements have started to ease many of us have taken advantage of increased opportunities for families and friends to meet in small groups and bubbles. But it is important to remember that the virus is still out there and the risks remain very real so it is important for us all to remain **VIGILANT**, continue to follow the

guidelines and **RESPECT** the safety of others. For the most part, people in Charlbury appear to be acting responsibly but, as restrictions ease, it is very easy to drop our guard and compromise safety by failing to observe social distancing as carefully as we should. So **PLEASE** keep in mind that there are many vulnerable people within our community who have been shielding and are only now able to venture out. Their vulnerability may not always be obvious, so it is vital that we all continue to respect the safety of others as we go about our daily lives. Thank you.

Town Council Update

- **Full Council meetings.** During the full lockdown period all council meetings were cancelled but virtual meetings of the full council were held during May and June. Physical meetings of the full council have now resumed in the Memorial Hall subject to strict social distancing protocols. These meetings are open to members of the public as observers as usual but if you wish to attend, please inform the clerk in advance so that seating can be made available and sanitised. If you do attend, please observe government guidelines applicable to indoor public spaces to ensure the continued well being of all involved. Thank you.
- **Planning Meetings and meetings of sub-committees and working groups** are still currently suspended. Planning applications relating to Charlbury are being dealt with electronically as WODC are not currently able to provide paper copies of plans to the council. If you have any comments relating to a planning application that you would like the town council to consider, please contact the town clerk as below at the earliest opportunity.

- **Surgeries** Councillor surgeries remain suspended until further notice but if you have any matters that you wish to bring to councillors' attention, please contact the town clerk in the usual way as below.
- **Day to day council operations** The emergency committee comprising the Chairman, Vice Chairman and Town Clerk remains in place to carry out essential day to day business as necessary in consultation with other councillors by email or telephone.

Contacting the Town Council If you have any matters for consideration by the council at any time please contact the Town Clerk via charlburytc@btinternet.com or telephone 01608 810608 9am to 5pm (not weekends or Bank Holidays).

Charlbury Neighbourhood Plan 2031

The revised draft plan has now been submitted to West Oxfordshire District Council (WODC) following a delay enforced by the COVID-19 emergency. This means that WODC, our local planning authority, is now responsible for taking the plan through the remaining stages to its adoption as a "made" plan. The town council cannot make any more changes to the plan and any further representations on the plan must now be made directly to WODC. The revised plan and associated documents can be viewed on the Neighbourhood Plan website (www.charlburynp.org.uk).

Before it can be adopted, WODC must take the plan through three more main stages:

- **A further 6-week period of public consultation (known as "Regulation 16 consultation")**. This will enable you and all consultees to comment directly to WODC on the revised plan. This consultation will be taking place very soon and may indeed be in progress by the time you read this.
- **Independent Examination** The examination will be undertaken by an independent examiner and its main

purpose is to ensure that the plan is sound and not vulnerable to legal challenge. Our current expectation is that the examination will take place during October 2020.

- **Referendum of all Charlbury electors** If the plan passes examination (possibly with some further changes required as a result of the examination), a referendum will be held of all electors within the parish of Charlbury. If a majority of those voting in the referendum approve the Charlbury Neighbourhood Plan 2031, WODC will adopt it and it will become a "Made Plan". As a Made Plan, it becomes a legal part of the planning system and its policies must be taken into account by WODC when considering all planning applications within the parish of Charlbury. Arrangements for public referendums and elections are subject to the Coronavirus Act 2020 and current indications suggest it may not be possible to hold the referendum before May 2021. If this situation changes, we will let you know.

Town Council Grants for the Financial Year 2021/22

Each year the town council can make grants to local organisations for the benefit of the local community. Any organisation that wishes to apply for a grant from the Town Council for the financial year 2021/22 must obtain an application form from the Town Clerk and return it together with supporting documents by midday on 31st October. Late applications cannot be considered. The Clerk can advise on what can, and cannot, be grant aided under the Local Government Act.

Town Council Elections – 6th May 2021 – Could you make a difference?

As we reported last time, the town council elections originally scheduled for 7th May 2020 have been postponed for a year and will now be held on **Thursday 6th May 2021**. The new date may seem some way off, but time continues to march on! In these uncertain times, and with the additional challenges of the

declared Climate Emergency, the town council is likely to play an increasingly important role in the future. **Could you help to make a difference?** If so, please give some thought to putting yourself forward for election next May. Contact the town clerk or talk to any of the existing councillors (socially distanced of course) to find out more about what is involved.

Play areas re-opened

As restrictions have gradually been lifted, the play areas at Nine Acres and Ticknell Piece are again open and we are delighted to see them being used well and responsibly. We are particularly pleased to have been able to complete the improvements to the equipment at Ticknell Piece – I know it was frustrating for local residents to see the new equipment but not to be able to use it through the lockdown. On a cautionary note, please do remember that the virus can linger on surfaces so please use sanitiser and wash hands thoroughly for your own safety and the protection of others.

Other Matters:

Overhanging Branches. Encroaching hedges Etc. Weather conditions this year have encouraged copious growth of hedges and other vegetation so please check whether anything around your home may be encroaching on pavements, roads or footpaths, obscuring road signs or causing a safety hazard by impeding visibility for pedestrians, cyclists and/or motorists. If so, please trim back the offending items. If you are unable to do this yourself, why not ask a neighbour!

Dogs on Nine Acres Recreation

Ground. If you choose to take your dog onto Nine Acres, please make sure that you **keep it on a lead at all times** and do not allow your dog to foul anywhere within Nine Acres. Remember that this wonderful facility is provided for the enjoyment of the whole community and that it includes a well used and much loved children's play area and picnic tables. It is totally unacceptable, irresponsible and disrespectful to allow

dogs free rein in these areas. As well as the obvious health hazards, the "results" can be very unpleasant for others to deal with. Please act responsibly and respect other users of the recreation ground. Don't let a few spoil it for everyone else.

Wild Swimming in the Evenlode. We know that an increasing number of people like to enjoy wild swimming in rivers etc., especially during the summer months. Whilst we do not wish to spoil anyone's enjoyment there are very real risks. We must therefore emphasise that the town council does not encourage this activity. In respect of the River Evenlode and Mill Cut accessible from the Mill Field island anyone choosing to do this, does so at their own risk.

Together, the community of Charlbury will come through these difficult times and we can emerge stronger and wiser.

STAY SAFE!

Peter Kenrick

CHRONICLE ADVERTS

Advertise your business in the **Charlbury Chronicle** and reach over 1550 residences.

To place an advert please ring
Graham Jowett on 01608 810666 or
email:
gjowettchronicle@btinternet.com

CHARLBURY FARMERS' MARKET on the Playing Close between 9am and 1pm on Saturday, September 12th

Charlbury Farmers' Market is administered by Thames Valley Farmers' Market Co-operative Ltd. and organised by Geoff & Janet Burroughs.

Any queries, please contact Geoff or Janet on the contact details below.

Email: burroughs871@btinternet.com
tel: 07969 208518, 01608 810260

You may have noticed, if you have been into Witney recently, that several streets in the centre have been coned off and reserved for pedestrians, cyclists and disabled parking. This is all part of the government's Active Travel programme, which has given funding to councils around the country for the purpose of promoting walking and cycling. Oxfordshire was in line to receive £600,000 to support this in June but failed in their bid and only received 50% of that amount.

A second tranche of £2.38 million is now available for the county and the bid for that went in at the end of July. I was particularly concerned that this time Oxfordshire gets all the support it can, so I requested a special meeting of the Performance Scrutiny committee, at which officers and the Cabinet Member for Environment were asked to present their plans for the second tranche application.

Members of the committee, of which I am one, questioned why the first bid had failed, what lessons had been learned from that experience, and how those lessons could be applied to the second bid. The general feeling was that we had been very unambitious in our first application. We are now waiting for the government to decide whether to allocate the full amount to Oxfordshire this time.

However, we should not expect too much for Charlbury and the surrounding area. Most of the money will go to

support initiatives in the towns and cities, with relatively little coming to rural areas. This is disappointing but understandable as in the great scheme of things, £2.38 million is not a huge amount of money and will only go so far.

The real need in rural parts of the county is for improved bus services. At the moment, people are understandably reluctant to use public transport, but when the coronavirus is behind us, as eventually it will be, we need to make sure that our X9 and S3 services continue to run and that they receive the support that they need to maintain timetables that encourage their use. If we don't do this, then the likelihood of people choosing not to use cars is significantly reduced. The same goes for the Cotswold Line.

At the District, the emphasis recently has been on ensuring that shops, pubs and restaurants can open safely. There was some concern expressed recently about safety at local campsites, and officers have been very helpful in making sure that the owners are aware of their responsibilities, which from what I have seen, they are.

It has been very encouraging to see how well District and County staff have worked together during the pandemic, and I hope that this will continue in the future.

Liz Leffman

CORNER HOUSE AND MEMORIAL HALL

Office: 01608 810879

Office hours: Mon 9.30am - 11.30am; Wed & Sat: 9am to 12 noon
(closed first Saturday of every month)

Emergency Contact:
Roy Scott (01608 810562)

PELLMANS

Your Local Solicitors

- **Business and Employment Law**

Contracts, Legal Compliance
and Disputes

- **Property**

Residential, Commercial
and Agricultural

- **Wills, Probate and Trusts**

Tax Planning and Lasting
Powers of Attorney

01865 884400

www.pellmans.co.uk

1 Abbey Street, Eynsham, Oxford OX29 4TB

Home visits and evening appointments available

BLENHEIM TAXIS

Local/National Airport Transfers

Airport specialists

Complimentary Wi-Fi

Charlbury based

07773 000 444

www.blenheimtaxis.com

email: enquiries@blenheimtaxis.com

All major credit cards accepted

Corporate accounts welcomed

STUDENT GRANTS

Are you under 25, living in Charlbury, with a place at university or college or an apprenticeship? If so, you may be eligible for a grant from the Charlbury Exhibition Foundation. *Even if you have received a grant in a previous year, you may qualify for another, so do apply again.* Apply by **1 October 2020** to: charlburygrants@hotmail.com

Please include the following details:

- Name and date of birth;
- Home address in Charlbury;
- Schools you have attended;
- For students:
 - ⇒ The name of the university or college,
 - ⇒ The title and level of your course (for example, BA Hons in European History),
 - ⇒ The year of study (for example, first year, second year, ...);
- For apprentices:
 - ⇒ The name of your employer,
 - ⇒ The type of apprenticeship and level;
 - ⇒ Outline information on the costs involved in the course or apprenticeship.

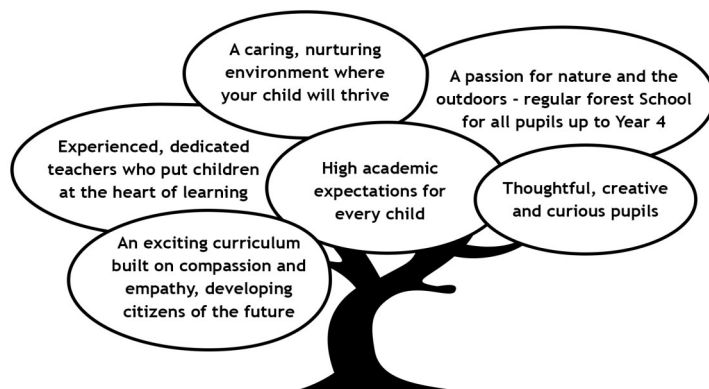
Stonesfield Primary School

Learning together to achieve our best.



Looking for a friendly, inclusive, local school for your child?

Stonesfield Primary School has places in all year groups - we would love to show you around.



To arrange a tour with the headteacher, Mr Ben Treveil, please contact the school office.

Tel: 01993 891687

Office email: office.2353@stonesfield.oxon.sch.uk

Headteacher email: head.2353@stonesfield.oxon.sch.uk



All Together In Charlbury – a local helping hand

First of all an appeal for more volunteer drivers especially those under 70 years of age!

(This is not intended to be ageist (the author is over 70!) – the reason for the appeal is explained below. If you would like to find out more, please contact ATIC on our organisational mobile number - 07487 413892 or email: charlburyalltogether@gmail.com

In the light of expert information and advice available from the Government ATIC had to take the decision at the beginning of lockdown not to provide transport to appointments of any kind for the time being. As caring people who set up ATIC, this decision went against our nature but it was clear that nationally voluntary transport schemes were not considered to be safe to continue to run either for their volunteer drivers or for any potential passengers.

As in this area lockdown is now easing in some respects in line with Government guidance and as we are aware that hospitals seem to be starting to resume some of their non-emergency appointments, ATIC's Management Group are now looking at when and how ATIC can resume its transport service in a way that is safe for both drivers and passengers.

This is not an easy task, as national guidance from informed sources is still very cautious about car-sharing and about what the over 70s should or should not be doing in order to protect themselves. Government guidance currently still requires car-sharing to be limited to achieving essential journeys only. The recommended precautions that voluntary transport schemes are advised to take when planning and carrying out a journey are not inconsiderable. However, we are working hard to set up appropriate systems and procedures which we will need drivers and passengers to follow.

When we do resume, it is clear that we will need to operate on a more limited basis, as all in our very small team of

drivers are over 70 and therefore still counted as being in the "more vulnerable" category, however young or active we may feel. Not all our drivers feel able to start volunteering for ATIC yet and we will want to restrict the number of journeys each driver makes. Hence the appeal for more volunteers at the start of this article.

We will therefore have to ask anyone who is thinking of asking ATIC for help with a journey to first explore all other suitable sources of transport available, including asking a hospital department or their GP surgery whether NHS transport can be provided. ATIC will endeavour to help with information about what is available.

Volunteer Link-Up—our invaluable "call-centre" (01993 776277) is coming back into action on 3 August. At the time of writing we are not able to give a precise date on which ATIC's service will resume but we would hope that by the time that you read this in the Chronicle, we will be operational. If you need help with a journey, ring 01993 776277 and we will see if we can meet your request. We can only do our best under the circumstances.

For those with access to the internet, please also keep in touch with updates on our page in the Community (Charity and World) section of the Charlbury website (www.charlbury.info). As we have seen in the news at the end of July/beginning of August, COVID19 avoidance requirements can now change on a daily basis and we will have to remain mindful of this.

Meryl Smith



Charlbury Green Hub

Bring & Take

Sadly, for obvious reasons, we can't hold our normal Bring & Take this October in the Memorial Hall so are planning to do something a bit different instead and we hope it will be fun for everyone. On Saturday 3 October, we will ask people to put the items they want to give away outside their home and let other people take them away. This sort of arrangement happens in other countries such as Australia and Germany and much closer to home in Oxford.

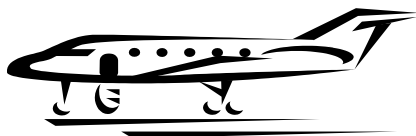
To make it easy, we'll invite people to register with us and give some idea of the sort of things that they are giving away e.g. furniture, toys, tools, curtains, books, pictures, CDs, kitchenware, etc. Then we can produce a map of Charlbury with locations and a rough idea of what will be available where. The map will be available for printing from our website so that people can wander around Charlbury on foot and take what they want.

Electrical appliances (i.e. with a plug) will have to be PAT-tested by us before they can be given away and we will publish instructions about this beforehand on www.charlbury.info and on notice boards. We will also publish guidelines including Health and Safety, particularly covering Covid-19 precautions to keep everyone safe.

On the day we will ask people to put a green flag of some sort outside their house to indicate that they are participating and make the things they are giving away clearly visible. At the end of the day they will just have to take anything left back inside. We won't be able to dispose of the leftovers like we normally do.

This would of course be weather dependent, so if we are unlucky and the forecast was bad for that Saturday we'd have to rearrange for the following week.

Christine Elliott

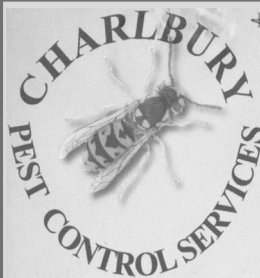


AIRPORT TRANSFERS WITNEY SHUTTLE

**WE PROVIDE DIRECT
TRANSFERS FROM
CHARLBURY TO HEATHROW
(and other airports & cruise
terminals etc).**

**WE ARE PROFESSIONAL,
FRIENDLY & EXTREMELY
RELIABLE.**

**INFO@WITNEYSHUTTLE.COM
01993 705993
FREEPHONE: 0800 043 4633**



**Are you
troubled by:**

**Rats
Mice
Moles
Wasps etc ?**



Then please call

07810 290218

Fully Qualified and Insured



ChOC News

You may recall from the Chronicle's 2019/20 Winter edition (what a long time ago that now seems!) that ChOC, after 15 or so years of operation, was placed in a state of "suspended animation" until September of this year. At the time of making that decision, we - along with everyone else - had no idea as to what was in store for all of us in the ensuing months!

Though the pandemic is still very much with us, there has in recent weeks been some easing of lockdown restrictions, in particular as they relate to the showing of films in public places. Of course those restrictions might yet be changed but, as matters stand at the time of writing, some cinemas - commercial and communal - have re-opened or are planning to do so, albeit with numerous safety measures ("COVID 19 Secure") in place. **

This therefore begs the question: should ChOC be revived? And if so, how and by whom?

The "how" question has its challenges but, as the saying goes, "where there is a will, there's a way". The "who" question is the big challenge! As explained in the 2019/20 winter edition article, ChOC was, at the time of its suspension, in critical need of more volunteers to carry out the various roles, both on screening evenings - which of course now would involve new rules of operation - and for the various tasks that have to be undertaken in-between screenings.

My wife, Jackie, and I have each been involved for the last ten years or so in ChOC. It's been a privilege and a pleasure to work with fellow volunteers in

providing a community cinema for Charlbury. However, we have both decided that the time has come for us to stand down from our ChOC roles (she as Secretary and "organiser in chief", and I as acting Chairman and projectionist). Our Treasurer, Susan Byrne, is also stepping down after keeping ChOC finances in very good order over a number of years.

Therefore, if ChOC is to resume, it needs volunteers not only for on-the-night jobs such as venue preparation/front desk/projection etc. but also for all the intervening tasks ... film choosing/licensing, finances, equipment upkeep, DVD checking, printed/online publicity, holding meetings, answering queries etc. To put it bluntly, unless there are people willing to step forward to fill the key roles, then, sadly, there is no point in reviving ChOC.

Though we are stepping down, Jackie and I (and no doubt Susan too) will gladly pass on any advice to people willing to take on key roles within ChOC to enable it to adapt and continue. If you wish to find out more, please feel free to contact Jackie or me on 01608 810713 or via email: secretary.chocfilms@gmail.com.

As well as passing on advice, we remain willing to help out on special occasions; perhaps, for example, at a Christmas matinee film showing for local children.

Steve Hague

** See, for example, <https://www.cinema.uk.org.uk/wp-content/uploads/2020/06/CINEMAS-keeping-workers-and-customers-safe-during-COVID-19-JUNE-2020-V1.0.pdf>

COMPUTER HELP

**Broadband and Wireless. Installation and Training.
Problem solving. Jargon-free advice. Upgrades.
Digital Photos. Virus Protection and Removal.**

Call or email me, Len Kehoe

*- Computer Science graduate
with over 30 years experience*

phone: 01993 810125

mobile: 07944 877437

email: thepcbuddy@gmail.com

web: www.thepcbuddy.co.uk



Hook Norton
Veterinary Group

Charlbury Sugery
T: 01608 811250
Hook Norton Hospital
T: 01608 730085

**ALL HNVG SURGERIES ARE OPEN,
INCLUDING OUR CHARLBURY SURGERY.**

We still have a strict COVID-19 policy in place to protect staff and clients. The latest updates can be found on our website.

Our Farm & Equine Teams are both working and available for all your equine and livestock care from our Hook Norton Surgery.

We are here for you and all your animals.
We look forward to seeing you soon.

Moreton Branch
T: 01608 695305

Deddington Sugery
T: 01869 337732

www.hooknortonvets.co.uk
24-HOUR EMERGENCY SERVICE



News from the Charlbury Patient Participation Group (CPPG)

Since the last issue we have had 3 meetings, one by Zoom and 2 in a garden. We have kept in touch with Wesley Rouse, the Practice Manager of The Charlbury Medical Centre (CMC) via phone and e-mail.

News from the Practice

Before visiting the surgery it is advisable to refer to the CMC website to check latest arrangements, www.charlburymedicalcentre.co.uk, or to ring the surgery first, 01608 811680.

Telephone Answering Service. A new telephone answering service is now in place, and there has been positive feedback. If you have any concerns do get in touch with CPPG.

Staff Name Badges. Following a request from CPPG it was been agreed with the CMC that all nursing and reception staff should wear name badges which are clearly visible.

News from CPPG

CMC Doors We have expressed concern at the difficulty some people find in negotiating the entrance to the surgery and it has been agreed that these doors need to be made automatic.

Complaints and Comments. A new more user-friendly style of formal complaint form has been made available to the CMC. More informally the CPPG is always pleased to hear about patients' experiences (both positive and negative) of using the Practice. Comments will be treated with suitable discretion. One of our aims is to keep the Practice informed of patients' views.

Communication with patients in Charlbury and outlying villages:

Regular updates on health matters are posted on the Charlbury website and appear either under 'News' or 'Health'.

We publish Newsletters quarterly. All issues are available on the CPPG website and hard copies of this summer's edition are available at the Pharmacy.

dominate the news and our lives, the summer issue includes the latest information on the most common symptoms of Covid-19; and the development of two potential vaccines, one at the Jenner Institute, Oxford and the second at Imperial College, London.

The new Organ Donation Law came into effect in May 2020. We are all now, with a few exceptions, considered to be potential donors unless we opt out.

We are aware that many patients do not have access to e-mail and we are currently discussing ways of improving communication.

Information after a person dies.

Following a comment from a patient, CPPG has provided the CMC with 'Age UK' booklets on the subject so that reception staff have up-to-date information on what to do and who to contact after a death.

Advance Directives.

Making our wishes known about how we would like to live for the last weeks and days of our lives is very important, not only for ourselves but also for those who love and care for us. An advance directive is a decision we can make now to refuse a specific type of treatment at some time in the future. It lets family and health professionals know our wishes about refusing treatment if we are unable to make or communicate those decisions.

Information is available online at www.nhs.uk and www.compassionindying.org.uk and www.ageuk.org.uk

Telephone Age UK Oxfordshire 0345 4501276

Compassion in Dying. 0800 999 2434.

Pharmacy We welcome Asim Hanif (pharmacist), who has taken over the management of the Charlbury Pharmacy, renamed Averose Pharmacy. Tel: 01608 810315. Opening hours are unchanged.

As the coronavirus pandemic continues to



Charlbury Pre-School News

AUTUMN 2020

July marked the end of another (albeit highly unusual) academic year and we'd like to say some thank-yous.

Firstly, thank you to Chris and the pre-school team for all of their hard work and care to make the pre-school safe and ready to re-open on 29th June. This meant that we were able to welcome back most of the older children for the last three weeks of the summer term before they transition to 'big school' this September. The children quickly adapted to the new routines, such as additional hand-washing. At the end of term, we had a socially distanced picnic to say 'goodbye' to another wonderful group of four year olds. We kept in touch with all of our families during the period of closure and really missed those who were unable to return — We are looking forward to seeing all of those faces again in September.

We also said goodbye to Katy Hopkins, who has been such an asset to our team and will be greatly missed by the staff, parents and children. A huge thank you to her for all of her hard and thoughtful work. Katy is going on to pursue a different career path and we wish her good luck from all of us.

We're a charity, run by a dedicated team of fully qualified staff and managed by a committee of parent volunteers. Two of our brilliant committee are leaving this September as their youngest children are off to Primary School. Emma Vickers has been our treasurer for 6 years and Arantxa Mathias, our secretary for 5! Thank you to them for all of their support and positivity in running the pre-school, fundraising and smuggling Santa in to all of those Christmas parties! The pre-school cannot operate without these

parent volunteers and the time they give to keep our community resource open.

Looking ahead, we are preparing to re-open in September, carefully following all of the guidelines set out for us and adapting to any changes. We're looking forward to welcoming back all the staff, parents and children and some new families too. There will be two new parent committee members officially taking their roles soon and we are looking forward to some much needed fun and fundraisers after such a long break... Bandoeko on Zoom just wouldn't have been the same.

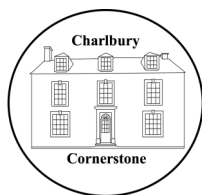
We still have some spaces left for September, and would love to hear from anyone who is interested in their child joining us at any point next year. If you are interested in securing a place, do get in touch
admin@charlburypreschool.org.uk 01608 811200. There is also lots of information on our website
www.charlburypreschool.org.uk

Jackie Daish

CHRONICLE ADVERTS

Advertise your business in the **Charlbury Chronicle** and reach over 1550 residences.

To place an advert please ring
Graham Jowett on 01608 810666 or
email:
gjowettchronicle@btinternet.com



The Cornerstone

A new community hub for Charlbury

Throughout the lockdown, we have witnessed a remarkable outpouring of volunteerism and service in Charlbury. Some highlights include:

- Over 200 people volunteered to provide essential services to over 125 self-isolating households through the Community Centre;
- Meals on Wheels started providing frozen meals donated by Cook and a Charlbury family to supplement their weekly hot lunch delivery;
- The Charlbury Day Centre initiated the delivery of lunch to their participants who could no longer meet at the Memorial Hall;
- Several organisations set up remote coffee mornings and conference calls to support and connect self-isolating individuals; and
- St. Mary's and the Community Centre partnered to create the Give & Take – a food exchange and delivery enterprise.

These interactions have definitely strengthened our sense of community. However, as lockdown guidelines lighten up, and many return to work, others will still face challenges. We are keen to sustain the personal links and sense of service to others that has blossomed here. Therefore, St Mary's, in partnership with the Community Centre, has set up a new community hub at the Corner House called the Cornerstone. The Cornerstone will provide the local community with three essential services: food, education, and advisory services.

Food

We will enable everyone in town the opportunity to share food in two ways:

- Community Larder – A place for all of Charlbury to use to share excess local produce, expanding on the incredibly successful apple takeaways started by Christine Elliott.
- Give & Take - Collecting dry goods as well as fresh produce, dairy, meat, and cheese to support local families needing extra assistance.

Education

The shutdown of schools created quite a gap in educational levels for young people. With the help of the new Community Centre's Youth Corps and Coordinator, we have set up a learning café as a managed, safe place for small group revision support. We hope to provide extra support with learning and homework to bridge the gap created whilst schools were closed. In time we hope to provide lifelong learning opportunities for all ages.

Advisory Services

A private consultation space available to provide debt, legal, relationship and other advice by professionals.

We believe the Cornerstone can provide a base of support for all of Charlbury which would enable us to build a stronger community, both for those who give and those who receive. If you would like more information on the Cornerstone, please contact us at cornerstone@stmaryschurch.co.uk, or call us on 01608 819253.

*Daniela Jenkins
Thomas Gifford Trust
Mobile 07979 70609*

Specialist Private Client Lawyers & Tax Professionals

Trusted advisors to individuals and their families

"An outstanding niche private client firm...its practitioners are recommended as experts in their field, providing high-quality advice...its client service is second to none and every client is valued equally and treated with sensitivity and genuine compassion."



We can assist you with specialist legal advice on Wills, inheritance tax planning, powers of attorney, helping with probate and generally protecting your assets. We also help protect the vulnerable or elderly.

Our tax specialists are also here to help with your personal tax compliance, including preparing personal tax returns and offering guidance on HMRC correspondence. They can also advise you on tax planning on the sale/gift of assets, including the new reporting of capital gains on the sale of private residences.

Dealing with your own affairs and getting them in order can appear daunting. We're here to make life easier. Do pick up the phone or email us and we would be happy to have a free, no-obligation initial chat with you. We can meet on video call or in person when safe to do so.



Anna Burnside PARTNER
anna.burnside@theburnsidepartnership.com

JACQUI BIRKS TAX DIRECTOR
jacqui.birks@theburnsidepartnership.com

For further information, please contact:
info@theburnsidepartnership.com



The Carpenters' Workshop, Blenheim Palace Sawmills, Combe, Oxfordshire OX29 8ET
T 01865 987 781 E info@theburnsidepartnership.com W www.theburnsidepartnership.com

FOLLOW US ON:



Goodbye Weeds



Prices from
£15 *per quarter



With prices from as little as **£15* per quarter** for providing a great service, is it any wonder that 40% of our new customers come to us through recommendation.

Hello Beautiful Lawn



So, call today for your FREE lawn analysis:

01869 345333

*Prices based on a lawn size up to 60m²

Big Apple Take-Aways

Thank you to all the people who made suggestions about how to handle distributing our local apples under social distancing rules.

Fortunately, the opening of **The Cornerstone**—our new community hub at the Corner House—means that my worries about this are over. Instead of having six Big Apple Take-Aways every two weeks over the autumn I will now be able to pick fruit whenever the weather is suitable and deliver straight to The Corner House for anyone to take free of charge during the week—so no scrums involved! I will advertise in the window and on the *charlbury.info* website what varieties are available along with information about them. Distributing plums has always been hard because they need eating as soon as they are picked—and now this will be possible.

The Cornerstone will be able to take any spare produce from our local gardens for sharing out to anyone who wants it. This was the original 2008 intention of Charlbury Sharecroppers, so maybe this year we will be able to salvage even more fruit from Charlbury itself. If you have more apples, pears, plums, damsons, figs, quince, medlars etc than you can use yourself, then please contact me on sharecroppers@charlburygreenhub.org.uk.

I use a long-handled picking basket rather than ladders and I can easily pick fruit from even the tallest trees. This is often how it is agreed with the owner, I

take the higher apples and leave the lower ones for them to pick easily—this means there aren't loads of windfalls for them to deal with. Knowing the apple variety is the first stage to knowing when the apples will be ready to pick. I would be delighted to come round to work out what apples you have, however, if they start to fall off then please call me straight away to pick them.

Early apple varieties don't keep for long but the later varieties ready in October will be able to be stored overwinter for use until the spring. This means that it's the early varieties that are so often wasted – George Cave, Discovery, Worcester Permain and James Grieve are particularly gorgeous apples and so lovely to eat especially when you've only had supermarket apples for months. Later on the dark maroon Spartan with the lovely bloom like a plum is a popular garden apple tree and the apples are much loved by everyone – so if you have one of these and have too many to eat yourself then please think of sharing them with the rest of Charlbury.

A final word about plums – people have always fought over the plums at the Take-Aways – so if you have a plum tree and have too many to eat yourself, then please contact me because I know they would be very much appreciated.

Read more about our local apples on www.charlburygreenhub.org.uk/food/sharecroppers.html

Christine Elliott, Charlbury Green Hub



Charlbury Tennis Club

Charlbury Tennis Club has resumed its club/social sessions following updated guidance from the Lawn Tennis Association on 13 July. These take place three times a week: Sundays 2-4pm; Mondays 1.30-3pm; and Thursdays 7-9pm (floodlit in winter). Players of all standards are welcome

to attend.

All members of the tennis club also enjoy free use of the tennis courts at other times as part of their club membership fee.

If you are interested to join the club, please contact charlburytennis@hotmail.co.uk

Charlbury Day Centre

As we all emerge from our enforced hibernation there is inevitably some anxiety about resuming where we left off—our way of life will have changed permanently.

The good news is that all our members, volunteers and manager are well and no one has been struck down by the Virus.

We keep in regular touch with our members and a team of volunteers have done a Trojan job cooking and delivering a cooked lunch once a week.

We hear that the Memorial Hall will reopen soon and we are planning how we will be able to restart safely. I think that, so far, we have been lucky. Let's hope our good fortune continues

Bob Tait



St Mary's Church 2nd Christmas Tree Festival

Following the success of last year's Christmas Tree Festival we have decided to run the event again this year. The dates will be Thursday 3rd – Sunday 6th December and we will have 40 trees available to sponsor.

Obviously things will have to be a bit different this year owing to Covid-19 but we are keen to celebrate the diversity and enterprise of our wonderful town even more in these strange times. We will make sure that you and your organisation can set up safely and we will use all the correct safety measures so the general public can enjoy the festival.

Details of other events will follow, and emails will be sent out in the autumn. However if you or your organisation are keen to know more at this stage please get in touch with Hilli Waller at hilli.waller@gmail.com

All proceeds to St Mary's Church.



Beer & Wine Circle

At the time of writing, lockdown is easing but we are having to come to terms with the "new normal". Our 2019-20 programme of events was cancelled from March onwards but we remain optimistic that our 2020-21 programme can start in September with our AGM and continue in October and November with tastings.

We have had to make a number of changes to, hopefully, enable these meetings to go ahead. Firstly, we hope the War Memorial Hall will be able to open by 21 September. We then plan to use the Hall rather than the Green Room to enable social distancing and we will ask attendees to confirm attendance prior to the meeting so that we can ensure we have sufficient space and wiped tables available. A table will be for an individual or household. Attendees will be providing their own drink and snacks at the AGM but we will provide clean glasses.

Meetings commence at 7.30pm and new members are always welcome. Subscriptions for the year are just £10 and subsidise our tastings. In the meantime continue to enjoy your favourite tippale and stay safe. For more information please contact: charlburywineandbeercircle@gmail.com





PROFESSIONAL ARBORICULTURE

ALL ASPECTS OF TREE
SURGERY
UNDERTAKEN

FULLY INSURED

FREE QUOTATIONS

(01993) 868001
office@jagtrees.co.uk
www.jagtrees.co.uk



Brian's Barber Shop

Formerly Charlbury Barbers.

01608 810630

Senior citizens day every day!

Opening times:

Mon. closed. Tues. 9-1 2-5.30. Wed. 10-1 2-6.30. Thurs. 9-1 2-5.30 Fri. 9-1 2-5.30. Sat. 7-1



Shop hours now open 10am-3pm
All picture framing by appointment only please call
COTSWOLD FRAMES Market St ~ Charlbury ~ OX7 3PL ~ 01608 811805
www.cotswoldframes.co.uk ~ info@cotswoldframes.co.uk

Coffee Break answers

Answers to Dingbats:
1. Good Looking; 2. Potatoes; 3. Criminal
Put the past behind you; 5. Painless Opera-
tion; 6. Excuse Me; 7. 10 Downing Street;
8. Back Seat Driver; 9. A Cut above the
rest; 10. Kiss and make up;
11. Side Salad; 12. Long Time No See

Enjoyable and friendly Art Courses

Option of email-based tuition and small
classes in community rooms with
COVID-19 safety measures in place

For more information contact:
gabrielekern31@gmail.com

CHARLBURY COMMUNITY DIRECTORY

Please note that it is the responsibility of each organisation listed in the Community Directory to notify any changes to the Editor

Artweeks - Wendy Clifford (01608 810006)

All Together In Charlbury (ATIC)

To request help (01993 776277). To contact management committee (07487 413892)

Baptist Church - Kay Colyer (01608 810107)
charlburybaptistchurch@gmail.com

Charlbury Amateur Dramatic Society (CADS)

Helen Wight, Secretary
charlbury.drama@gmail.com

www.charlbury-drama.com

Charlbury Art Society (CAS) Sec: Kati

Eidenbenz (01608 810911)

secretary@charlburyarts.co.uk

Charlbury Beer Festival - Nick Millea

nick.millea@btinternet.com

www.charlburybeerfestival.org

Charlbury Beer & Wine Circle - John Moore
(01608 810700)

Charlbury Bowls Club - Shaun Morley
enquiries@charlburybowls.co.uk (01993 868134)

Charlbury Bridge Club— Secretary Monica
Wilkinson (01608 810560)

Charlbury Canoe Club - Hugh Belshaw
(01608 810130) *hughandjoan@uwclub.net*

Charlbury Chronicle - Susie Finch (01608
810861) *editor.chronicle@outlook.com*

Charlbury Community Centre—Daniela Jenkins
(01608 811878)

Charlbury Community Speedwatch —
charlburysw@gmail.com

Charlbury Cricket Club - David Horne Vice
Chairman *dw3horne@gmail.com*

www.charlburycricketclub.co.uk

Charlbury Day Centre - Bob Tait (01608 810150)

Charlbury & District Probus Club Mike White
(07710 296814) *mike.ewhite7@gmail.com*

Charlbury Green Hub - Christine Elliott
(01608 811057) *www.charlburygreenhub.org.uk*

Charlbury Garden Society
chairman@charlburygardensociety.org.uk

Charlbury Ladies Luncheon Club—Gill Grason
(01608 810154) and Frances Canham (01608
811176)

Charlbury Morris - Peter Smith (01608 811007)
peter@charlburymorris.org

www.charlburymorris.org

Charlbury Museum - Curator—

curator@charlburymuseum.org.uk

Charlbury Music Class - Peter Fry (01993
359189)

Charlbury Open Gardens - Catherine Goyder
csfgardens@charlburystreetfair.org

Charlbury Pioneer Country/Western Club
(Ray & Margaret) (01993 831345)

Charlbury Pre-School—Laura Barwood
laurambarwood@hotmail.co.uk (01608 811200)

Charlbury Royal British Legion - Nick Potter
(01608 810388)

Charlbury School -Head (01608 810354)

office.2100@charlbury.oxon.sch.uk

www.charlbury.oxon/digitalbrain.com

Charlbury School Association -

office.2100@charlbury.oxon.sch.uk

Charlbury Scout Group - Cheryl Hornsby -
cheryl@redstonecomputers.co.uk

Charlbury Society - Chairman, Nikki Rycroft
n.rycroft@doctors.org.uk

Charlbury Street Fair - Chairman—John Dora
(01608 811328) *jmdora@btinternet.com*

Charlbury Tennis Club - Mark Jarman (01608
811692) *charlburytennis@hotmail.co.uk*

Charlbury Town Council—Roger Clarke, clerk
(01608 810608) *charlburytc@btinternet.com*

Charlbury Town Football - Keith Claridge
(01608 810201 or 07870 426707)

Charlbury Town Youth Football Club - James
Ball (01608 810270) *jolliecat@btinternet.com*

Charlbury Women's Institute - President -
Miriam Evans (01608 430807)

charlburywi@oxfordshirewi.co.uk

Charlbury Youth Theatre—Andy Graham
andyg2439@gmail.com (01608 659462)

ChOC Cinema - Jackie Hague (01608
810713)

Corner House Community Bookshop—Neil
Pakenham-Walsh (01608 811899)

Corner House and Memorial Hall -Office (01608
810879)

Churches Together - Rosalind Scott, (01608
810562) *rosalind.scott@hotmail.co.uk*

Cotswolds Voluntary Wardens - Harriet
Baldwin (07779 157410 or 01608 811718)

akanid90@gmail.com

Dementia Friendly Charlbury— Meryl Smith
(01608 810192) *charlburydf@gmail.com*

Friends Meeting House: Sue Terry (01608
811033 email: *sueeterry@btinternet.com*)

Holiday Club
parishoffice@stmaryscharlbury.co.uk

Macmillan Cancer Care - Liz & Bob Tait (01608
810150)

Methodist Chapel - Sue Tokumine (01608
810366) *suetok@hotmail.com*

Mind in Chipping Norton (Mental Health
Support) (01608 645296)

Riverside Festival - Andy Pickard (01608
810635) *admin@riversidefestival.charlbury.com*
www.riversidefestival.charlbury.com

St Marys C of E Church Rev Sally Welch
(01608 810230)

St Teresa's RC Church Fr Tony Joyce
(01608 642703)

Sustainable Charlbury - Liz Reason (01608
811212)

The Bell Inn (01608 810278)

The Bull Inn (01608 810689)

Thomas Gifford Trust- Chris Potts (01608
811878) *chris.potts@blakemorgan.co.uk*

**United Nations Association (West
Oxfordshire)** – Neil Pakenham-Walsh (01608
811338)

Wilderness Festival—*www.wildernessfestival.com*

Wychwayz Border Morris - Teresa Duester

(01608 810934)

www.charlbury.info - Richard Fairhurst



Charlbury's Police Community Support Officer

C9837 Wesley Smith

To speak to us about any concerns you may have:

call 101 if it's a non-emergency

or 999 in an emergency

www.thamesvalley.police.uk

also sign up for free crime alerts
www.thamesvalleyalert.co.uk

CHRONICLE ADVERTS

Advertise your business in the
Charlbury Chronicle and reach
over 1550 residences.

To place an advert please ring
Graham Jowett on 01608 810666 or
email:
gjowettchronicle@btinternet.com

MAILING LIST

We have a mailing list for people wishing to receive the *Charlbury Chronicle* who no longer live in the town. **Now £4.50 per four issues; £6 per four issues for overseas subscribers.** Large-print £2.50 for **each** copy. If you wish to be put on the mailing list, please contact Dawn Colvin (address in right hand panel).

Please note that **ALL** cheques for advertising, mailing list or donations should be made payable to *The Charlbury Chronicle* and should be sent to The Treasurer, Graham Jowett, whose address is in the panel on the right.

CHARLBURY CHRONICLE CONTACTS

Editor: Susie Finch

tel: 01608 810861

e-mail: editor.chronicle@outlook.com

Assisted by:

Julia Caston: 01608 810240

Barbara Allison: 01608 811262
and others

Treasurer & Advertising:

Graham Jowett,

2 Lees Heights, Charlbury OX7 3EZ

tel: 01608 810666

gjowettchronicle@btinternet.com

Mailing List: Dawn Colvin

3 Enstone Road, Charlbury OX7 3QR

tel: 01608 810545

Distribution:

Brian and Shelagh: 01608 819091

Robert Caston: 01608 810240

And thanks to Graham Jowett for proof-reading this issue of the Chronicle.

The **Charlbury Chronicle** is produced and distributed free to every household in Charlbury. All those involved in its preparation work on a voluntary basis.

The **Charlbury Chronicle** aims to be impartial and independent and cannot be held responsible for any of the views expressed in its pages. The editor reserves the right to alter or adapt any articles submitted for publication although hoping to discuss any major changes with the authors first.

The **Charlbury Chronicle** acknowledges the support of our advertisers and individuals who generously contribute to its funds and hope that any reader using their services will mention the **Charlbury Chronicle**.

Printed by

KMS Litho Ltd, Hook Norton, OX15 5LS

01608 737 640

enquiries@kmslitho.co.uk

www.kmslitho.co.uk



Denshams Butchers

'Purveyors of quality meats, poultry and game'
49 High Street, Witney, OX28 6JA.

01993 703714

www.denshamsbutchers.com

Email: denshamsbutchers@yahoo.com

We are delivering, free of charge (as always) to Charlbury and the surrounding area. Please call the shop to place your order; our staff are happy to guide with suggested quantities and tell you about our weekly special offers. In addition to all the usual meat products we have ...

...a range of
Vegetables and salad
Sacks of potatoes
Teabags
Coffee milk
Pasta and rice

The shop is open! We have installed full screens to protect our staff and customers. We operate a one in one out system with contactless payments.

We are open for slightly reduced hours in order to process all the deliveries but if you are able, do pop in before 2pm Mon – Saturday.

Stay safe.

SHAW & Co.

Providing legal advice in London and Oxfordshire for 35 years

1 Church Street

Charlbury

Oxfordshire OX7 3PW

Telephone 01608 810100

andrew@shawandcompany.co.uk

Wills, Probate and Administration

Powers of Attorney

Executor & Trustee Services - Inheritance Tax Planning

Property - House and Flat Conveyancing

Commercial Leases and Landlord and Tenant matters

Commissioners for Oaths

"...probably the best and most approachable lawyers I have ever used....."

10 Market Place
Chipping Norton,
Oxon OX7 5NA
Tel: 01608 644808
Fax 01608 644809



22 The Parade
Oxford Road
Kidlington,
Oxford OX5 3DB

www.fairfaxandcompany.co.uk
charlbury@fairfaxandcompany.co.uk

1 Church Street
Charlbury
Oxon OX7 3PW
Tel: 01608 811146
Fax 01608 810050

15 High Street
Bloxham
Banbury
Oxon OX15 4LT

Free Valuations No Sale—No Fee
Specialist Lettings Department
Independent Mortgage Advice
Low Cost Buildings Insurance

**Fairfax & Co. offer unbeatable value and
expert property advice from professionals**