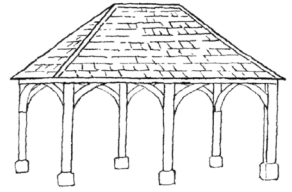


# Charlbury Chronicle



Volume 25 Number 4

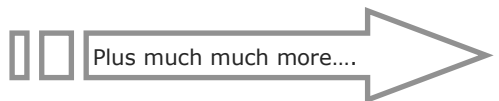
Winter 2021

The Charlbury Chronicle is a free quarterly local community publication run by volunteers covering news and events for Charlbury and the surrounding area

## Inside this issue:



|  |    |
|--|----|
| Lynette Murphy and the first Chronicle | 2  |
| Vaccination Riots                      | 4  |
| Street Fair                            | 12 |
| Coffee Break Page                      | 19 |
| Discover Charlbury                     | 22 |
| Charlbury Scout Group                  | 25 |
| Charlbury Church Services              | 28 |
| A Life's Day                           | 35 |
| Wigwell—Past, Present & Future         | 52 |
| Charlbury Community Directory          | 55 |



Contacts:-

Editor: editor.chronicle@outlook.com  
Advertising: gjowettchronicle@btinternet.com  
Distribution: brian\_murray\_guide@yahoo.co.uk

# Charlbury Garage

Hixet Wood, Charlbury, OX7 3SB

**01608 810898**

08:30 – 17:00 Monday to Friday

Attending to motorists' needs for over 40 years, we offer a local, friendly, helpful & trustworthy service

- MOT & Pre-MOT
- Tyres & Exhausts
- Servicing
- Batteries
- Aircon
- Bodywork

Competitive tyre prices

MOT £44

Half-price MOT with Full Service

Courtesy car available

Cars bought & sold



[www.charlburygarage.co.uk](http://www.charlburygarage.co.uk)  
[info@charlburygarage.co.uk](mailto:info@charlburygarage.co.uk)



---

## From the Editor

---

Well this is the 100th edition of the Chronicle, which was started up by Lynette Murphy back in 1997.

Who would have thought it would be still be going strong after 25 years! More can be read on the beginnings of the Chronicle on page 2 where Lynette recalls what happened then.

We also have the very first Day in the Life in this edition on Vicky and Mike Pratley's life as milkmen on p35.

We have to say a fond farewell to three Charlbury residents in public life. Jane and Ian Parsons have stepped down as caretakers for the Corner House & Memorial Hall and will leave a large gap but we wish them well in their new home—see p27.

Roger Clarke has stepped down as town clerk after 42 years and we must thank him for all he has done for the town - much un-noticed. In my time on the Town Council I was constantly amazed at how much he knew and his guidance regarding what we could or couldn't do! Happy retirement Roger.

Just a reminder that Charlbury Late night Christmas shopping is back this year on Friday 10<sup>th</sup> December. Shops open till 8pm everyone welcome, subject to any emerging government/local restrictions that could come into force between now and then.

WI are holding their Carol service, which will be taking place in the Corner House Garden on 7 December at 6.30pm to which all are very welcome. There will also be more carol singing outside the Community Centre on 18 December. See Charlbury website for more details.

I wish you all a very merry Christmas and Happy New Year.

Let's hope we are now on course to more normal times and able to put the last two years behind us.

If you would like to see something in the Chronicle or have a article which you think may be interesting, please email me at

*editor.chronicle@outlook.com*  
*Susanna Finch*

**Please note the deadline for articles for the Spring issue is 1st February 2022  
Please send all articles to [editor.chronicle@outlook.com](mailto:editor.chronicle@outlook.com)**

## Lynette Murphy and the first Chronicle

*The Chronicle was started by Lynette Murphy and a group of Charlburians in late 1996, and the first edition was in March 1997. Here Lynette recalls that early time, with some comments and extracts from the first edition*

**Lynette:** I had often thought I'd like to do a magazine. I went to secretarial college and worked as a secretary so I've always been around writing and writers. Not fiction, that didn't interest me. Brian and I moved to Hundley Way in Charlbury about thirty years ago when I was 59 and he retired. He had worked as an engineer for Shell, and we moved frequently then. Hundley Cottage was the 19<sup>th</sup> house we had. It was lovely to come here and we both wanted to be part of a community. He said to me 'Now it's your turn' to do what interests you, and 'I'll take over the cooking'! He used to get cook books out of the library and taught himself to cook.

**Charlbury News:** For six years beforehand, Professor Robert Leslie had produced his own Charlbury News, at his own expense. He included snippets of information, gossip and occasional pieces on local history - his individual and very personal views of life in Charlbury'

**Lynette & the team:** I realised that Professor Leslie wanted to give up due to failing health, so I took my chance. I was helped by a lovely team of people. They were Diana Potten, Julia Caston, Jenny Haxworth, and Sue Smith. Jack Potten took care of Advertising, Brian Murphy and Robert Caston were in charge of Distribution, Dawn Colvin was the Treasurer, and Ann Gilbert (Buckmaster) did the Artwork. Over the years many other people came and helped.

**Introductory Circular January 1997:** Lynette and her team decided to canvas opinion about their proposed new magazine for Charlbury. So they produced their Introductory Circular in January 1997, asking for help and contributions. They hoped it would be a

'worthy successor' to Professor Leslie's Charlbury News.

**Lynette:** we had a very good response to our circular, so we went ahead. It was a very exciting day when we produced our first issue for March 1997. The team had shared out the jobs - advertising, writing, contacting clubs and societies, and so on, but we helped each other out as well. We got funding from local people, sponsors and from advertising, so we could distribute the Chronicle free to every household in Charlbury.

**Lynette and distribution:** every quarter, about 600 copies of the Chronicle would be ready at the printers. Then I would use our spare bedroom at the top of the house to sort them out into about 30 bundles for our distributors. This was quite a big job and could take a whole day. Then we took the bundles to our distributors who finally delivered the issue 'to your doorstep.'

### **Extracts from the first issue March 1997**

**1 Douglas Hurd our MP** '...I have represented Charlbury for over fourteen years .... it is one of the few places where people habitually drop in from the street either because they have a personal problem or they have a point of view which they want their MP to share. ...it is just about the most active and indeed argumentative town in the constituency'

**2: Pub Hosts of the Year:** 'Egon Ronay has awarded one of the top pub prizes of the year to Roy and Suzanne Flynn of the Bull Inn'

**3: A Life's Day with Vicky and Mike Pratley at Charlbury Dairy:** 'at 3am we are up and ready to meet the milk truck when it arrives from London. We have a pot of tea with the driver and by 3.15 we are ready to start our day'

**4: PG's TIPS:** The Police report from PC 3657 Paul Girling, Charlbury Beat Officer. He talks about drugs raids, parking on double yellow lines and a 'recent robbery'

**5. The Thomas Gifford Charity:** The trustees had applied for outline planning permission for the proposed new community centre on the Spendlove site. 'A meeting to update all the potential users was held on February 27<sup>th</sup>'

**Lynette:** Another community project I am very proud of is the Charlbury Community Centre Appeal which we began in 2004. I was the Appeal Co-ordinator, Diana Potten the deputy, and lots and lots of people helped raise money for the proposed Community Centre. We all worked so hard and were constantly thinking of new ways to raise money, new sponsors to approach and events we could organise. We put up an Appeal Thermometer in the museum garden. We managed to raise over £140,000 within four years. After 10 years the Appeal raised over £250,000 (*Ed:* the financial crash of 2008 meant the CCCA was in abeyance for 4 years, but by 2016 it had raised over £285,000. See the Charlbury Community Centre web site for more of the background story. The Chronicle covered the Appeal in detail over these four years)

**Lynette:** I did the Chronicle for 18 years. I realised I needed to give it up, and as I was walking back from Mass one day along Sheep Street, before I reached the Corner House, I had decided 'that's it'. So I told the Chronicle committee. And Susie Finch took over from me, and is doing a wonderful job.

**Then and Now - The Chronicle over the years.** Has the Chronicle changed much over the years? It still has its cheerful yellow colour, it's still full of the reports from clubs, societies, the local representatives on the councils, the Charlbury medical centre, the Thomas Gifford Trust, details of church services and a directory of local community contact numbers.

It still has advertisements from local businesses –some have stopped trading, others continue under new names. There was an article on the Town Appraisal in 1997, as there have been many on the Neighbourhood Plan 2020 over the last few years. A Charlbury Arts Festival was

being planned for June 1997 as it is now for June 2022. There were, and still are, articles on Charlbury in the past. And A Day's Life (called then A Life's Day) was there from the very beginning.

**So what has changed?** The Chronicles for 2021 have many more pages (48 now, 24 then) and the font size is smaller. This means there is room for a lot more information from us all, and a lot more of interest for us to read now. The cover has been redesigned slightly but it still has the town's logo on it.

**And the main difference?** Not a mobile phone number to be found in 1997! And no email addresses either! Little mention of computers - though Vicky Pratley from the dairy would '...do the books and update the computer' in the afternoons after finishing their milk delivery round.

So our thanks must go to Lynette and her teams over the years, as The Chronicle today continues the good work they started

*Lynette Murphy was talking to Barbara Allison October 2021*





## Vaccination Riots 1897

"I have always thought of [Charlbury] as just about the most active and indeed argumentative town in the constituency." So wrote Douglas Hurd, the then-MP for West Oxfordshire, in his introduction congratulating the Chronicle on its first issue in March 1997. This tendency was already there a hundred years earlier when perhaps one of the most dramatic events in the history of town took place – the Vaccination Riots (which Paul Jackson has mentioned in his article on page 22). This was featured in the Chronicle's second issue but many new residents may not know the story.

Smallpox ravaged the world for centuries, leaving many people severely scarred and often proving fatal. It was especially dangerous for children: nearly three-quarters of children who caught the disease died. Attempts were made to give protection by scratching the skin and rubbing in matter taken from smallpox patients. Called variolation or inoculation, this was a dangerous procedure but did work in some cases.

In 1766 the apothecary Edward Lyster moved to Charlbury and lived in Gothic House in Church Street. He advertised his skill in inoculating people against smallpox and set up an isolation clinic in Patch Riding, Finstock for those he treated to prevent them infecting others with smallpox. He must have had some success since on 2 October 1773 a notice appeared in Jackson's Oxford Journal signed by ten of the leading inhabitants declaring that Charlbury was free of the disease.

Edward Jenner's work using injections of material from the less dangerous cowpox was recognised as a breakthrough and led to vaccination being generally adopted. The Vaccination Act of 1853 introduced mandatory smallpox vaccination in England and Wales for infants up to three months old. Vaccination hygiene could be poor and

some children died, while some parents objected to the treatment being compulsory. In 1896 ten Charlbury families refused to allow their children to be vaccinated. When fines of 13s6d per family were issued, they refused to pay and on 6<sup>th</sup> February 1897 a Superintendent of Police and nine constables arrived simultaneously at the homes of nine of the parents, marking items which were to be auctioned to cover the fine and costs.

Lois Hey tells the story of what ensued.

"The Town Cryer was sent round to announce that the auction would begin at 12.30, and a large crowd, accompanied by the Charlbury Brass Band, gathered at the bottom of Church Street, outside Dan Kitching's house. The noise was so great that no bids could be heard and the Chief Constable decided that no sale had been made. The band played *Rule Britannia* almost non-stop and the crowd moved up to The Bull where items belonging to W.H. Baughan, Thomas Lainchbury and F.T. Horniblow were held up. The only bid made was £1 for a Horniblow table, but the bidder was nearly lynched.

Before order could be restored, an enthusiastic bandsman blew his cornet into a constable's ear and in the resulting scuffle the mouthpiece was broken off and a window was broken. [*The bidder, cattle dealer William Wells, was outbid by a supporter of Mr Horniblow and after the sale the crowd had a whip-round to reimburse him and restore the table to Mr Horniblow.*]

The crowd then moved quietly along Sheep Street where a young man was lying gravely ill, but at Hixet Wood the noise broke out again and rotten, eggs, mud, flour and rice were thrown about. Marked furniture from the homes of Winter and Siford had to be returned, and the crowd and the now perspiring band marched through Fisher's Lane to the Playing Close. At blacksmith Walter Widdows' (Anvil Cottage) the noise was

augmented by two of his men beating a sheet of iron, and his double perambulator was not sold.

At Edward Widdows' (Elmstead) to the great amusement of the crowd, a bag of flour burst on the head of the auctioneer who took on a piebald appearance. No sale was made, nor was there a bid for a sewing machine owned by Haynes in Market Street. That was the last on the list and everyone trooped down Dyer's Hill to Sgt. Timms' police station in Church Lane. The auctioneer (E.J. Brookes of Oxford) escaped out of the back door, reached his conveyance and returned to Oxford.

The same evening, effigies of the auctioneer and the cattle dealer who had made the only bid, were burnt on a bonfire on the Playing Close along with a dead calf, signifying the vaccine.

At the Oxford Summer Assizes, 19 men were brought before the Lord Chief Justice accused of riotous assembly and 12 of them were accused of conspiracy to defeat the course of justice. Defence Counsel argued that most of them had

only come to listen to the band.

They all pleaded guilty to unlawful assembly and the Judge bound them over to keep the peace. Shortly after, the law on compulsory vaccination was repealed."

Thanks to the efforts of Jenner and other scientists, smallpox was declared eradicated from the world in 1979.

*Long and detailed accounts of the riots appeared in The Oxford Times and are kept in the museum.*

*Copies of Lois Hey's book A History of Charlbury are available to buy through the museum price £5. Email [info@charlburymuseum.org.uk](mailto:info@charlburymuseum.org.uk)*

The Museum has a new, dedicated website. Find it at [www.charlburymuseum.org.uk](http://www.charlburymuseum.org.uk) or follow the link on the Charlbury website.

We are extremely grateful to Andrew Chapman by so generously giving up his time to design the website for us and for sharing his expertise with us. Thank you Andrew.  
*Judy Dod*



*Charlbury Town Band who played such an important role in the riots. No wonder the auctioneer struggled to be heard above the noise!*

# Charlbury Christmas Trees

We will be opening this year to sell Christmas Trees as follows:

Open 2 weekends only – December 4<sup>th</sup> & 5<sup>th</sup> & December 11<sup>th</sup> & 12<sup>th</sup>  
Opening hours 9.30 – 4.00pm

Trees up to and including 6/7 foot – this year we can only offer pre-cut trees which we have had to buy in. We do have lots of our own young trees growing, but not yet in sufficient numbers at these heights to be cut for you.

Trees 7/8 foot and above – you can choose a growing tree and have it cut and take away on the day.

Please check for updates on: [www.charlbury.info](http://www.charlbury.info)



Halcyon Honey Farm  
Woodstock Road, Charlbury, OX7 3ET  
Tel: 01608 810260



## Royal British Legion Charlbury Branch

***The Branch is urgently seeking two volunteers.***

We need a new Treasurer as soon as possible and a Poppy Appeal Organiser for the 2022 Appeal.

For further information please contact Nick Potter [Branch President] on 01608 810388 or Cyril Kerry [Branch Chairman] on 01608 810347

## Reflexology in Charlbury

Lucy Robertson MAR

Tel: 07983 673480  
[lucyrobotson@hotmail.co.uk](mailto:lucyrobotson@hotmail.co.uk)  
[www.lucyrobotsonreflexology.com](http://www.lucyrobotsonreflexology.com)



**All Together In Charlbury –  
a local helping hand**

### **If you need:**

- Transport to appointments or activities/visits
- Occasional household tasks/gardening
- Shopping
- Help with a form or letter or something else
- Someone to pop in for a chat

**Local ATIC volunteers are here to help  
Call 01993 776277**



## Charlbury Christmas Trees

We last wrote about Charlbury Christmas Trees in 2012. This was the year that we decided not to open as we did not have the selection of trees that our customers had come to expect. No-one has let us forget that year!!

Well, we did open in 2013 and have opened every year since then and we have been kept very busy December weekends.

Then we arrived at the 2020, the COVID year!! This presented a real challenge. Would we be allowed to open? If we were allowed to open, could we operate safely? How? Did we actually want to open?

There was no shortage of advice. It came thick and fast from many directions. A key concern was the safety of Geoffrey and myself as we were in an at risk group.

But 2020 had been a tough year for all and everyone needed Christmas to lift spirits in whatever way was possible. And we did have Christmas trees. We planned a one-way system. We moved the book in shed. We built screens. We ordered sanitiser and masks. And we organised more helpers.

Saturday 5<sup>th</sup> December arrived. We waited with baited breath. Then the customers started arriving, and arriving, and arriving. There were cars everywhere – in our lay-by, on the grass, on the verges either side of the road. Thank goodness Ron was helping as traffic marshal. He was kept busy all day, managing the parking like a pro and directing customers to the new entrance.

Morgan managed the booking in system. He took customer details for Track and Trace and provided information. In the

Christmas tree plantation, Stephen's chain saw was busy all day felling trees chosen by customers. Paul the Tall and Paul the Not so Tall gelled as a team over the netting machines, pushing and pulling trees all day. And finally, Dave was there with a smile, and a card reader, to relieve customers of some hard earned cash.

All the effort was worth it. We had happy customers who had a tree.

This year we face the same dilemma as we did in 2012. We have plenty of trees 8 foot and above to choose from. But, having done a thorough walk around, we have identified that, although we have plenty of young trees coming on, we simply do not have sufficient trees in the 4 foot to 7 foot range to cut.

So we had a choice – to shut, as in 2012, or to find an alternate way of meeting demand. 2021, though a better year than 2020, has not been a normal year. And everyone wants to enjoy Christmas. After discussions and several sleepless nights, we have decided to open but to do this we have to buy in pre-cut trees to supply demand for trees 4 foot – 7 foot. These trees have been sourced from a well-known supplier with whom we have a long standing relationship.

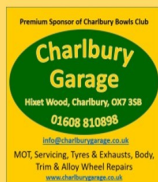
So our customers will be able to visit and enjoy a wander around the plantation in the fresh air. Children can still come and play chase or hide and seek. And you will be able to view the trees for sale and hopefully find one that you want to take home.

We hope that you will pay us a visit to get a tree and will enjoy the experience as part of your Christmas preparations.

*Janet Burroughs*

# Charlbury Bowls Club

Ticknell Piece Rd



## Christmas



8 games &  
2 Specials.  
6 books—£8  
6 flyers—£1  
per game



## Monday 13 December

Doors open 6.00pm, start 7.00pm, Bar

### Do you play a musical instrument? Do you love to Dance?

We are a very friendly, inclusive and welcoming group of Morris dancers dancing the traditional Border style of dance with sticks and wearing rag/tatter jackets. We are looking for new musicians and dancers of all ages and abilities to join us.

Do you play the accordion, concertina, melodeon, fiddle, flute or tin whistle or like to bang a drum or tambourine? Do you love to dance, dress up and put on a show?

Why not come along and try Border Morris dancing, we would love to hear from you.

We practice on a Tuesday evening in the Scout Hut on Nineacres Lane, 7.30-8.30pm. There is no commitment to attend every week just come along when you can.

Join us now and next year you could be playing or dancing at the local festivals, fetes and fairs.

For further information please contact Teresa Duester on 07881 963328 / 01608 810934

Twitter: @wychwayz Facebook: Wychwayz Border Morris Website: [www.wychwayz.org](http://www.wychwayz.org)



## Charlbury Bowls Club

Our summer outdoor season finished at the end of September in what was a successful season on many fronts. Our Oxfordshire Men's League team won Division Three, losing just two games all season and finishing nine and a half points clear of second placed Thame who just pipped Chipping Norton to the promotion spot.

We chose not to target the defence of the West Oxon Mixed League which we won in 2019 (when it was last competed) and finished mid-table. The games were cut to just three triples a side which we hope is reversed for next season. Our ladies participated in a joint team with West Witney in the Ladies League, but due to a successful recruitment programme Charlbury will be fielding its own team in the league next season. Our many friendly fixtures were only punctuated with three cancellations due to Covid outbreaks (in other teams).

Our Junior section that started in April has grown beyond all expectation. Our Junior Academy ran an after-school club and a Saturday morning session, together with an immensely enjoyable Summer School each Wednesday during the holidays. Thirty-five juniors aged 7 to 12 joined as club members – a fantastic achievement from nothing. The season's highlight was the six juniors chosen to take part in the Oxfordshire under-25s competition in their first season with Charlbury's Megan O'Reilly being on the winning triple.

As we moved indoors at the end of September for short-mat bowls, so did the juniors. Twenty-nine juniors signed up for winter, more than we can cope with for our two after-school clubs and the Saturday session, so we are having to hold a reserve list! Following on from the summer success, eight Charlbury juniors aged 10 and over are taking part

in the Oxfordshire under-18 competition in late November with the winner and possibly runner up qualifying for the national finals in April. In addition, four of our juniors and three coaches have been selected to be part of an Oxfordshire representative side to play the England Under 21 team at Oxford on 21 November.

For the seniors, Charlbury entered four teams in the West Oxfordshire division of the Oxfordshire short-mat league, and two teams in the Oxfordshire afternoon league – so plenty of bowling going on with six matches a week! It is still early season at the time of writing but all four teams in the evening league are mid table – two in division one and two in division two, while Charlbury's two teams fill the top two places in the afternoon league division two.

Charlbury have five players in the Oxfordshire Premier and 'A' teams for 2021/22 competing in the inter-county championships, playing teams from as far afield as West Sussex, Dorset, Avon, Worcestershire and West Midlands.

Supporting our local community we continue to host a monthly *Bowled Over* session for people with memory problems and our thanks go to Dementia Friends Charlbury for their support. St Mary's Church also hold a monthly *Memory Café* at the bowls club, as well as a weekly *Stay and Play* session for toddlers. Also, watch out for our decorated Christmas tree at St Mary's this December.

On Monday 13 December we host our very successful Xmas Bingo in a safe environment. See our separate advert in this edition of the *Charlbury Chronicle*.

Shaun Morley



## Cotswold Voluntary Wardens' update

First of all, congratulations to the Chronicle on reaching a significant milestone. Over the years, the Chronicle has regularly included information from the Cotswold Wardens, and it is good to be able to report that our activities are gradually resuming.

### Guided Walks

The most significant difference with the walks is that we no longer have the printed *Cotswold Lion*, which was traditionally where our walks were always found. There is an online version of the *Lion* with interesting articles and including all the current walks. The web address is [www.cotswoldsaonb.org.uk](http://www.cotswoldsaonb.org.uk), then follow the link to Walking and Exploring and click on Guided Walks. Most of our walks still have to be booked, and a form pops up so you can add your details.

You may also like to try a self-guided walk. You can download a map and walk instructions, plus some information about what you see along the route. There are walks to suit most people, some close by and some further afield.

### Countryside tasks

Over the past couple of months, the Wardens have focused on keeping local footpaths trimmed back to make access easier for everyone. We have also been liaising with the County Council and the Town Council about future plans for maintaining Centenary Wood. On the Salt Way, we worked with the County Council's countryside team on mowing the area where the downy woundwort grows, helping to keep the SSSI clear and this rare plant thriving there.

Another interesting job has involved installing a gate on a footpath near Burford, the gate having been donated to celebrate a couple's golden wedding. That is a really nice idea, and we had a little plaque made specially to explain the gate's significance.

For more information about the Voluntary Wardens, what we do and how to get involved, our contact details are in the Directory at the end of the Chronicle.

*Rosemary Wilson and Simon Walker*

### CORNER HOUSE AND MEMORIAL HALL

Office: 01608 810879  
Office hours: Mon 9.30am - 11.30am; Wed & Sat: 9am to 12 noon  
(closed first Saturday of every month)  
Emergency Contact:  
Roy Scott (01608 810562)



## A health warning to Charlbury visitors

Charlbury's not a village it's a town  
Get it wrong and watch the locals frown  
Even the website tells you this  
Get it wrong and risk a Glasgow kiss

A town which new and old all love  
Built-up to make the humble glove  
Mispronounce it and betide your woe  
You'll be face down in the Evenlode

Not a village, all thanks to Henry the third  
But would he have bothered if he had heard  
That calling it thusly, would often lead  
tourists and visitors noses to bleed

While I recognise the important distinction  
To avoid the 'Town's' eventual extinction  
Should miscreants face, for their lack of decorum  
thinly veiled threats on the Charlbury Forum?

As a humble incomer, my general reaction  
to the complementary tourist's infraction  
is to opine "thank you, nice of you to say  
here's a tip to help with your stay  
When you're in the Rosie, to avoid blood spillage  
Remember, Charlbury's a town, not a beautiful village"

(Tip - while in the Rosie, to end up not dead  
Order a bitter, not lager, you pleb!)

*Miles Walkden*

## CHRONICLE ADVERTS

Advertise your business in the **Charlbury Chronicle** and reach over 1550 residences.

To place an advert please ring  
Graham Jowett on 01608 810666 or email:  
[gjowettchronicle@btinternet.com](mailto:gjowettchronicle@btinternet.com)



## Congratulations

First of all, may I on behalf of the Street Fair Committee congratulate the Chronicle on its 100<sup>th</sup> issue? Always full of interesting articles and real gems of information; a handy resource for our flourishing town. Long may it continue and well done Susie and team!

### **Charlbury Street Fair 2021**

We crossed our fingers as mentioned in the last Chronicle and hooray! Charlbury Street Fair went ahead on a gloriously sunny 18th September as our first real community event since March 2020. From what we heard on the day and afterwards, Charlbury townspeople and visitors were well impressed, not just with the activities but also with how we had spread events around - from the Medical Centre to the Memorial Hall, in the Corner House gardens to our 'regular' stalls in Church Street.

The theme of 'Fantastic Stories' brought out lots of imagination and creativity in the Fancy Dress and Scarecrow competition, and new attractions – Sea Shanties courtesy of Charlbury and Finstock Morris, more live music than previously, and the Noddy Puppet Show – were the subject of some lovely compliments. I really felt that the high level of anticipation and hard work in organising the Fair was rewarded time and time again on the day – with lots of happy, smiling faces, and all in the context of COVID-19 restrictions.

### **Finances**

This year we managed to net around £4,000; next year we hope to run a quiz and help with Charlbury Garden Society with Open Gardens which we could not arrange for 2021. These events do increase takings considerably. As ever, monies raised are donated for the upkeep of the Corner House and War Memorial Hall.

### **Thank You!**

Our grateful thanks go to principal

sponsors including Fairfax Estate Agents and Cotswold Frames. Thanks go also to those who offered items for the Silent Auction, Charlbury Art Society and those who have sponsored us through advertising in the Programme.

We extend thanks to our band of willing volunteers who, with their hard work and help, sustain the local tradition of the Fair. This includes those who helped putting up and taking down the stalls, Lisa Hadfield-Law for the bacon butties, Professor Katie Ewer who opened the Fair, Tanya Stevenson for arranging tea and cakes, Dave Oates for organising the music, Leah Fowler and all those who helped with getting the programmes distributed alongside St. Mary's Leaflet... and not forgetting our Committee members!

### **Planning for 2022**

Planning for 2022 starts on the 13<sup>th</sup> and 15<sup>th</sup> of January – dates for your diary when we will arrange our recruitment drive for our Committee, and the new 'Friends of Charlbury Street Fair'. The 'Friends' is a new group of people who will help support us in various ways. Come along in January to find out more!

### **Street Fair 2022**

The most important date for 2022 of course is 17<sup>th</sup> September which is Charlbury Street Fair Day, in the year of the Queen's Platinum Jubilee. Do please watch out for information on this on [www.charlbury.info](http://www.charlbury.info) and on posters around the town. We are also looking to invite "new faces" to shadow some of our committee to share activities, learning from our experienced team. So if you'd like to know more, or to volunteer in any capacity, even just for a couple of hours on the Fair day, either contact me at [csfchairman@charlburystreetfair.org](mailto:csfchairman@charlburystreetfair.org) or come along to our January meeting.

*Prof. John Dora*

*Chair, Charlbury Street Fair Committee*

For up-to-date information, see [www.charlbury.info](http://www.charlbury.info) and [www.charlburystreetfair.org](http://www.charlburystreetfair.org) and the Facebook page for Charlbury is a Town & not a Village

---

# Charlbury Society

---

On the 7th October we started our season of talks with a truly wonderful presentation by Simon Townley from the VCH, with a detailed description of the original use and history of the Wychwood Forest and Cornbury Park, from early medieval origins up to the present day.

The debate over whether the Forest was actually used as a royal hunting site, or merely a larder for the royal palaces was fully explored and we had a fascinating overview of the history of the House, familiar to many of you, and the changes to it and the Forest over the centuries.

It was very encouraging to learn that we have over 100 members signed up for this season, and three quarters of you joined us for Simon's excellent talk.

On the 4th November we will have heard a whistle-stop tour of the Planning System from Rod Evans, solicitor, and a planning inspector up until 2015.

We continue to hope that you will join us if you haven't already, with those long winter nights coming up, or, if you are interested in one specific talk, join as a guest by emailing

[treas.charlsoc@gmail.com](mailto:treas.charlsoc@gmail.com) a few days before the event.

The exciting development of the Charlbury Museum Website will have been launched by the time you read this, and the Charlbury Society page on it will have details of talks and events we plan to organise. I had a long postponed tour of the Museum the other day, and was impressed by the wonderful arrangement and immaculate presentation of the collection.

Do visit when you can.

Here are our upcoming talks for the winter:

2nd December—Dr Janice Kinory on The Production, Distribution and Use of Salt in Prehistoric Britain

6th January

Trevor Jackson on RAF Brize Norton: Over 80 Years of Operational History

3rd February

Clare Shakya on Climate Ambition in the time of Covid-19

*Nikki Rycroft , Chair.*

---



## Charlbury Beer & Wine Circle

Our AGM in September started off our new year with a face to face meeting, followed by a quiz and opportunity to catch up. Our programme then continued in October with a great tasting by wine professional, The Wine Tipster. A very good evening was enjoyed by our members. We continue to use the main Hall to ensure we can spread everyone out.

We have arranged a tasting on November 15<sup>th</sup> and a Christmas Dinner on December 13<sup>th</sup>.

Into the New Year we have planned beer or wine tastings on the third Monday of January, February and March.

Congratulations to everyone involved in the Charlbury Chronicle on reaching 100 issues.

Merry Christmas everyone, continue to enjoy your favourite tipples, follow the guidelines and stay safe.

For more information please contact:

[charlburywineandbeercircle@gmail.com](mailto:charlburywineandbeercircle@gmail.com)

## CRAG News

Since the last edition of The Chronicle we've had lots of new members sign up to CRAG, so welcome to you all and thanks for joining us!

We really enjoyed seeing some familiar and some new faces at the Street Fair. It was especially lovely to meet all the children who drew pictures of Little Amal, the 3.5 metre tall puppet of a 9 year-old Syrian refugee girl travelling 8000km from Turkey to Manchester to find her mother. By the end of the day we had quite a gallery of wonderful drawings.

Little Amal arrived in Oxford on 26th October, and we were delighted that children in Charlbury came to our workshop to make beautiful flowers for Little Amal's welcome, and also went to the inspiring welcome event in Oxford on the day organised by The Story Museum. We're planning a 'Little Amal' themed Christmas tree for this year's Christmas Tree Festival at St Mary's Church, with decorations made by children at the Primary School.

At the end of August we organised an incredibly successful car boot sale to raise funds specifically for Afghan refugees. Thanks to everyone's generosity the event raised a magnificent sum of £2,000 which CRAG sent directly to Asylum Welcome in Oxford who are supporting 100 Afghan refugees in temporary accommodation (and we've just been able to send another £1,000). We wish to thank Charlbury Cricket Club for all their support and help with this event.

We've had many enquiries about donations of clothes and household items. We're still waiting to find out exactly what is needed. As soon as we know and can start collecting again we'll

put a notice on the [charlbury.info](http://charlbury.info) website.

We were excited to hold our first Sunday concert of the season in October. Our December concert will take place on Sunday 5th December. The Cirrus String Quartet will be performing Mozart String Quartet in D major K575 and WH Reed String Quartet no 5 in A minor. A treat not to be missed! Tickets £12 (£6 under 16s) can be purchased at Cotswold Frames, or are bookable in advance by phoning 01608 811558 or emailing [nick.parker@cooptel.net](mailto:nick.parker@cooptel.net).

Refreshments cannot be served due to Covid restrictions, but audience members will be given complimentary home-made cakes. We also have plans for other fundraising events over the next few months so please keep an eye on the events section of the [charlbury.info](http://charlbury.info) website for details.

We continue to raise funds to assist in the alleviation of poverty, distress, ill health and homelessness among refugees. If you would like to donate to CRAG you can either visit [www.justgiving.com/charlburyrefugee](http://www.justgiving.com/charlburyrefugee) or make a bank transfer to CRAG Coop Bank using account 65789036 and sort code 08-92-99.

Please email: [treasurer@charlburyrefugee.org.uk](mailto:treasurer@charlburyrefugee.org.uk) for a Gift Aid form to benefit CRAG a further 25% on your donation. If you would like to become a CRAG member and receive our newsletters please email [secretary@charlburyrefugee.org.uk](mailto:secretary@charlburyrefugee.org.uk).







CHARLBURY  
YOGA  
STUDIO

- \* Group and private classes \*
- \* Beginner to advanced level \*
- \* Newly refurbished private studio \*
- \* Central Charlbury location \*

All classes taught by Senior Iyengar  
Yoga teacher Matthew Greenfield

Please get in touch for more details!

[www.charlburyyogastudio.com](http://www.charlburyyogastudio.com)  
[info@matthewgreenfield.com](mailto:info@matthewgreenfield.com)  
 01608 819049



- Kiln Dried logs
- Seasoned logs
- Stacking Service
- Barrow Bags
- Bulk Bags
- Log Nets
- Kindling Nets

Order Online:  
[www.jagtimber.co.uk](http://www.jagtimber.co.uk)  
 Tel: 01993 868001




Cotswold Corner  
Maintenance

Tiling, Roofing, Bricklaying, Plumbing, Gardening, Joinery, Painting

**Robert Marks**

[CotswoldCornerMaintenance@gmail.com](mailto:CotswoldCornerMaintenance@gmail.com)

07973884232

GENERAL MAINTENANCE  
AND SMALL BUILDING  
WORKS

Patios, Cabinets, Garden Rooms, Insulation, Bathroom, Kitchen

Landscaping, Sheds, Cleaning, Fencing

Handyman, Decorating, Glazing, Cutting

## Salon Copenhagen

3 Pendle Court, Pond Hill, Stonesfield OX29 8PZ

Telephone (01993) 891101

### Unisex Hairdressing

Easy Free Parking

*All aspects of hairdressing  
undertaken by our experienced  
professionally trained stylists*

*Ear Piercing also available*

*Open Tuesday to Saturday*

*Find us on Facebook*



## Precious insects need our help

Insects are precious - they underpin the complex natural world surrounding us and yet their numbers are plummeting which has a knock-on effect on the more familiar wildlife that we love and cherish. The unusual weather patterns we're all facing with climate change are very disruptive.

This year we saw a cold spring with April being the 4<sup>th</sup> driest on record and May then being the 4<sup>th</sup> wettest - these are key months for our breeding birds when even seed eaters need to feed their fast growing young on high protein insects. This year many blue tit families didn't make it as the parents struggled to find insects for their young. Also, you may have noticed it's been a bad year for local apples - apples flower in May and the blossom is pollinated by insects - hence the scarcity of Bramleys and in some gardens *all* the trees failed to produce fruit.

Generally we take insects for granted and possibly only recognise the more charismatic butterflies and bees - we know even less about their life cycles - where for example do they spend the winter? Insects pass through many developmental stages that look very different from the adults which might live only a very short time. They might overwinter in crevices behind bark, within the dead stems of flowering plants, or in the soil. They might hibernate as adults or survive in earlier stages such as eggs, larvae, instars, caterpillars, or pupae.

Some butterflies have two generations a year with one developing quickly over the summer and one taking the other nine months. Some lay their eggs on the stems of grasses or the leaves of specific plants to provide the right food supply for the next caterpillar stage. If we don't

appreciate the complexity of insect life cycles throughout the year then we can easily destroy them unintentionally when mowing grass and clearing vegetation.

This year, I have been impressed by the many places in Charlbury where people have been managing their green spaces more sensitively for wildlife. I enjoyed taking photos of the wild flowers and any insects I could find - and I learnt a lot.

We have a wealth of opportunities for encouraging more wild flowers and more insects in Charlbury, many of our lawns and verges are remnants of old grasslands where the flowering plants survive as low-growing rosettes despite decades of being closely mown.

Many green areas are a mixture of fine slow-growing grasses and well-established plants that would flower beautifully if given the chance. I found the best local limestone flora at Sandford Rise and Hanover Close which was an orchard before the houses and road were built in the 1960s. Another revelation was the Woodstock Road which was realigned as a turnpike to Woodstock around 1800, until then it was called Green Riding and was the way to Stonesfield - the verge today has the same flora as Wigwell Nature Reserve on the north side of town.

But how then to cut the grass without doing harm? Grass grows according to both rainfall and temperature, so each year is different - this August was unusually cool and the grass didn't grow much but resumed again in the warm September and October. Areas with spring wild flowers such as cowslips and lady's smock need to be left uncut until they have flowered and set seed. On the other hand, areas of strong-growing grass would benefit from being cut in March and April to remove the vigorous



growth and allow the flowering plants to then bloom from May onwards without being swamped by the grass. Best advice is maybe to be observant about your own patch - what sort of grass sward you have, what's flowering when, what insects are around and always to leave some areas uncut overwinter hoping that some insects are using it to complete their lifecycles.

Mowing the edges around uncut areas or mowing paths through them also sets them off well and makes it clear that rather than being unkempt and neglected, the areas are being lovingly cared for and appreciated.

The Street Fair display of photos of wild flowers and insects in Charlbury will be displayed again on our stall at the Farmers Market on 11 December (9-1pm), please come and see it.

*Christine Elliott, Charlbury Green Hub*



*Marmalade Hoverfly on Field Bindweed  
taken by Jess Goyder*

## Charlbury & District Probus Club

Our congratulations on the 100<sup>th</sup> edition of the Chronicle, a great achievement by any standard.

Charlbury Probus has now had two successful lunch meetings after the prolonged period of inactivity during the Covid-19 period. Although, sadly, we did lose some members; however, we have gained, and continue to seek, new members. Our programme of social activities outside of our usual monthly lunch meeting is currently on hold, but we hope to start the new program in 2022.

Each of our lunch meetings takes place on the first Wednesday of the month and lasts about three hours which includes time to socialise at the bar before sitting down to a two course lunch. After the lunch we enjoy a presentation by a visiting speaker which lasts about 45 minutes to an hour. Lunches are open to members and their guests.

Our final lunch meeting of the year will be on Wednesday 1<sup>st</sup> December when we hope to enjoy an early immersion in the festive season.

Usually we are able to offer members outings and social events and next year we hope to be able to organise trips, theatres, concerts and attractions. In the past we have attended productions at the Watermill Theatre, Newbury, the Birmingham Symphony Hall, the Black Country Museum, Stratford upon Avon, Kelmscott Manor and the Gloucester and Warwickshire Railway, to name but a few.

We are currently seeking new members to join us for our lunches and social events. We have a male only membership but welcome ladies to join us for any of our activities.

The meetings are informal, we have a dress code of smart casual. Membership currently cost £15 per annum plus an additional monthly cost of £20.00 per lunch. We always welcome new members, and you can also contact Mike White the Club Secretary on 07710 296814 or at [mike.ewhite7@gmail.com](mailto:mike.ewhite7@gmail.com).

Charlbury WI continues to flourish during these times with all our meetings now face to face!

If you feel inspired to try new activities and make new friends, then why not try Charlbury WI?

We will be holding a Coffee Morning in the Memorial Hall on Saturday 4 December from 9.30—12 noon. Yummy cakes will be on sale! Hope to see you all there!

In September we enjoyed a Harvest Supper in the Memorial Hall, and had a thoroughly good time. October we had a talk on Modern Day Slavery which we all found very interesting and in November we tried our hands at several different crafts—bit beyond me I think! We shall be enjoying a Christmas Dinner at the Lamb in Crawley for our December meeting; January will see Martin Hannant give a talk on the Butlins Red Coats and in February Barbara Allison will give us a talk on the Museum.

Our two regular events; one a book club which meets six weekly, the next session is on 6 December in the Garden Room, and a monthly Craft and Cuppa Session which has now started up again at the Bowls Club. These are always on 3rd Saturday in the month, so the next one is on 18 December.

Our Carol Service this year will be held on 7 December but this time, because of Covid, will be held in the Corner House Garden. All are welcome to come along and refreshments will be on sale. Please meet in the garden at 6.30pm.

We meet on the **third Wednesday** of the month in the Memorial Hall at 7.30pm. Details of forthcoming events are on the Charlbury website or contact our President, Miriam Evans at [charlburywi@oxfordshirewi.co.uk](mailto:charlburywi@oxfordshirewi.co.uk).

# sustainable Charlbury

going low carbon locally

**News from Sustainable Charlbury**, a group of local volunteers concerned about the environment:

- Thousands of pounds of new funding are available to support projects that contribute to tackling climate change. We're seeking fresh grant applications from groups based within 25 miles of Charlbury. To find out more, click on the heading GRANTS on our website: [sustainablecharlbury.org](http://sustainablecharlbury.org).
- A showing of the film 2040 took place at The Memorial Hall on 23<sup>rd</sup> September. Motivated by concerns about the planet his 4-year-old daughter will inherit, award winning director Damon Gameau embarked on a global journey to meet innovators and changemakers.
- Read 'The Story of Southill Solar' for the remarkable tale of how a small Cotswold town came together to create a pioneering, community, renewable energy project. This account of how and why the solar farm on the road to Witney was built is accessible (free of charge!) at:

[www.sustainablecharlbury.org/southill](http://www.sustainablecharlbury.org/southill)





# Coffee break page

Compiled by Miles Walkden and Michele Marietta Answers on page 50

## 100/2 questions for the Centenary Chronicle Quiz!

1. What is the Roman numeral representing the number 100?
2. What period of time lasts 100 years?
3. The Hundred Years War was fought over the control of this country's throne?
4. Who was the last remaining apostle of Jesus who died in 100 CE?
5. Which element has the atomic number 100 and symbol Fm?
6. Which fairytale character slept for 100 years after being pricked by a spindle?
7. How is the number 100 written in the binary system?
8. What are the divisors of the number 100?
9. What substance's boiling point is 100 degrees Celsius?
10. Who is the only NBA player ever to have scored 100 points in a single NBA game?
11. What is a person called who has reached the age of 100 years?
12. Which athlete holds the world-record over the 100-m sprint?
13. Which person is displayed on the US \$100 bill?
14. What is the name of a famous bear living in the Hundred Acre Wood?
15. What is the metric unit of length equal to 100 metres?
16. Who is the only artist to have more than 100 singles in the top 40 of Billboard Magazine's Hot 100?
17. What number is represented by a 1 with 100 zeroes behind it?
18. Who is the Colombian writer who wrote the novel *One Hundred Years of Solitude*?
19. Which board game is played with exactly 100 letter tiles?
20. Which biblical man sired Isaac at an age of 100 years?
21. Which US sport is played on a field which is 100 yards long if endzones are not included?
22. What is the ball-shaped Pokémon holding #100 in the Pokédex.
23. What is the name of the Jewish feast where a Shofar is blown 100 times?
24. Who was the President of the United States 100 years after the American Declaration of Independence was signed?
25. What is the Spanish word for 100?
26. When is the date on which the 100th day of a non-leap year falls?
27. Hekatonkheires have 100 of these body parts?
28. What branch of the US government has 100 members?
29. In what country is 100 the ambulance and firefighter telephone number?
30. What ends at 100 km above sea level?
31. What famous coffee company buys over 100 million pounds of coffee each year?
32. What famous character created by Washington Irving slept for 100 years?
33. What subjects of books are found in the 100 section of the Dewey Decimal System of the library?
34. What city is at 100 degrees west longitude?
35. What city is at 100 degrees east longitude?
36. If a snooker player scores 100 points, this is called what?
37. What is Pi written to 100 decimal places?
38. What is the fear of 100 called?
39. What is the date of the 100th anniversary of the founding of the Communist Party of China?
40. What is the hieroglyphic symbol for 100?
41. What is the unit of English local government and taxation, intermediate between village and shire?
42. What is the manuscript under the classification of MS. Bodl. 100?
43. What is the term used to describe something that will completely break down and decompose into natural elements within a year?
44. What is the modern symbol for the 100th wedding anniversary?
45. Which famous American actor and comedian who always smoked a cigar lived to be 100?
46. 11 October 2000 was the 100th flight of what space vehicle?
47. In 2023, this famous rollercoaster located in Blackpool, UK will be 100 years old.
48. What Agatha Christie novel celebrated its 100th anniversary in 2020?
49. Which woman holds the record for the fastest time running the 100m?
50. Who was the first person to gain 100 million followers on Twitter?



# Denshams Butchers



'Purveyors of quality meats, poultry and game'  
49 High Street, Witney, OX28 6JA.  
01993 703714 [www.denshamsbutchers.com](http://www.denshamsbutchers.com)  
Email: [denshamsbutchers@yahoo.com](mailto:denshamsbutchers@yahoo.com)

## Christmas at Denshams 2021

### FESTIVE SEASON OPENING TIMES

|                            |                 |             |               |
|----------------------------|-----------------|-------------|---------------|
| Tues 21 <sup>st</sup> Dec  | 7.00am – 5.00pm | Mon 27th    | CLOSED        |
| Wed 22 <sup>nd</sup> Dec   | 7.00am – 5.00pm | Tues 28th   | CLOSED        |
| Thurs 23 <sup>rd</sup> Dec | 6.00am – 6.30pm | Wed 29th    | 7.00am—5.00pm |
| Fri 24 <sup>th</sup> Dec   | 6.00am – 2.00pm | Thurs 30th  | 7.00am—5.00pm |
| Sat 25 <sup>th</sup> Dec   | CLOSED          | Fri 31st    | 7.00am—2.00pm |
| Sun 26 <sup>th</sup> Dec   | CLOSED          | Sat 1st Jan | CLOSED        |

We are once again stocking the Free Range “Totally Traditional” Turkeys from Lower Clopton Farm, Stratford Upon Avon. We have been sourcing our Turkeys from Lower Clopton Farm for over a decade, not only because they have been reared in high welfare conditions, but because they are juicy, succulent and extremely tasty. Don't be shy to request a 'cooking tips' sheet, containing hints and tips for cooking the perfect turkey, along with weights and timings to make sure you do our beautiful birds justice on the big day.

#### Alternatively why not try:

- Free Range Cockerels
- Free Range Gressingham Geese
- Free Range Creedy Carver Ducks
- Cornbury Park Estate Venison
- 28 day matured British Beef
- Home-cured and home smoked Gammon
- Locally sourced wild Pheasant and Partridge
- Free Range Blythburgh Pork
- Locally sourced Lamb

Don't forget our range of homemade pigs in blankets, made with our award winning sausages. We have homemade stuffing, sausage meat (GF available too), dry cured bacon, goose fat, cranberry sauce, redcurrant jelly, potatoes, parsnips, sprouts and more fresh vegetables... everything to make your Christmas meal memorable. We also stock a large variety of quality cheeses, hand-raised pork pies, scotch eggs, terrines and pâtés, and our range of 'Abigail's Kitchen' chutneys for your festive buffets. We also have the entire range of Wychwood beers, red and white wine and prosecco for that festive tippie.

**We deliver, free of charge to Charlbury and the surrounding area, 6 days a week.**

**Please call us for help with your order; our staff are happy to help guide you with suggested quantities and weights for the number of people you are catering for.**

**Clint, Abi and all the Denshams staff would like to take this opportunity to wish you and your families a very Merry Christmas and a Happy New Year!**



tree  
care

All types of tree work carried out including stump removal & hedge cutting.

Contact us today for a free quote  
NPTC Qualified & fully insured.

📧 [kptreecare.co.uk](http://kptreecare.co.uk)

✉ [kptreecare@outlook.com](mailto:kptreecare@outlook.com)

📞 07788 289344

📞 01993 891526

Proud members of  
**Checkatrade.com**  
Where reputation matters

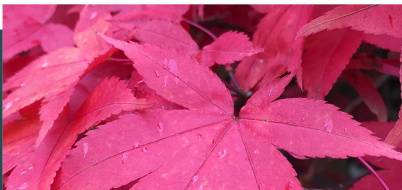


## COTSWOLD GARDEN DESIGNER



- Looking to improve your outside space but stuck for ideas on how to make the most of it?
- Want somewhere to entertain?
- A space for your children to play?
- Or maybe you just need a quiet place to relax, a calming, scented corner, just for you?

I can provide a full garden design, planting plans or a simple garden report - some ideas of how you could best use your outdoor space and the types of plants that you like and would suit the environment.



### CONTACT LORRAINE:

[lorraine@cotswoldgardendesigner.co.uk](mailto:lorraine@cotswoldgardendesigner.co.uk)

07516262560

[www.cotswoldgardendesigner.co.uk](http://www.cotswoldgardendesigner.co.uk)

## Discover Charlbury ... the best kept secret of the North Cotswolds

Having recently moved from a very quiet Ascott under Wychwood, we have been surprised how much is actually going on in Charlbury—we just didn't know!

Only five miles away from Ascott, longer via the river Evenlode, Charlbury is only 75 minutes from Paddington which explains the growth on the other side of the Wychwood Forest.

There are at least 40 active clubs! The population of Charlbury is around 3,000, so it is able to sustain a wide range of activities. However, it is clear that once you are here there is a lot going on. "Outsiders" are very welcome. Charlbury is the best kept secret of the North Cotswolds.

There are strong historic links with the Wychwoods as Charlbury was a major centre for glove making in the 19<sup>th</sup> century, employing 3,000, most of whom were female outworkers. Research into the Ascott Martyrs has identified many glovemakers.

In Victorian times, the most exciting event for local people was the Forest Fair in Cornbury. Started in 1795 by the Methodists as a quiet family picnic and as an alternative to the debauchery of the Witney Feast, it grew until it was itself accused of excesses and debauchery and was banned. Oh, and there were vaccination riots in 1897 when vaccination against smallpox was made compulsory and anti-vaxxers had their goods seized! See pictures courtesy of Charlbury Museum. Don't mention this to the Government.

Charlbury is very arty which supports an active Art Society with a total membership of over 200. About two thirds of members live in Charlbury, half the members have exhibited their work in one form or another, and members include professional artists and craftspeople. The Society organises the

biannual Charlbury Festival (10<sup>th</sup> to 19<sup>th</sup> June 2022), and promotes community art projects – most recently the set of mosaic Swifts mounted in the Community Centre. The Charlbury Garden Society also has 200 plus members and will be linking with the Festival with an Open Gardens on Sunday 10<sup>th</sup> June.

The social mix is interesting with many well-known people linked to Oxford University who contribute a lot to the community, in the 1991 census there were apparently a higher percentage of degree holders in the UK! Like any small town there is a lot of goodwill and caring for the community led by a joint committee of the five churches with a charity shop offering support to the less privileged plus surplus food from the residents and local farms.

Charlbury was a major centre for the Quakers in the 19<sup>th</sup> century and certainly their positive egalitarian philosophy prevails. Unlike a small village (Charlbury proudly calls itself a Town!) no one person dominates. There is a strong welcoming ethic; perhaps this is why it is regularly voted into media lists of the best/most fashionable places in Britain to live.

There is a well organised Bowls Club with over 50% of members living outside Charlbury. It is very friendly and encouraging to new members with even special Dementia sessions as well as a youth programme and popular Bingo nights.

One of the "jewels in the crown" is the Deli and Café in the centre where there is a small garden patio and the best coffee and cakes for miles! It will be offering it's very popular PYO (Pack your own) Christmas Hampers from 1st December. The Bull is a busy restaurant pub but even more busy is close by "Rosie" the Rose and Crown drinks-only perennial regional Pub of the Year winner.



The museum which is also in the centre opposite the Deli Café is run by a small committee in the Charlbury Society whose 140 members now meet online allowing other local societies to link in.

Cyclists and the public are welcome behind the museum in the Corner House Garden.

The amount and variety of sport played in Charlbury has increased dramatically since the recent opening of the Football and Sports Clubhouse and the Charlbury Community Centre in September 2017. Both are managed as a not-for-profit charitable organisations for the benefit of the people of Charlbury and surrounding villages.

The Centre's large sports hall, (plus a studio with sprung floor and mirrored wall), means that there is volleyball, basketball, netball, football, cricket, badminton, table tennis as well as yoga and Pilates. There are lots of circuit training sessions and a gym. Line Dancing and Strength and Balance classes are aimed at the more mature clients, but anyone can join in.

Walking Football is very popular with those who like to take the beautiful game a bit more slowly! One new sport many people have never heard of is Pickleball. It has proved really popular and is a sort of tennis and is played by people of all

ages. "Vintage" resident Anna Cherry is national champion.

There are activities for infants and children and a Youth Club on Friday evenings for the over 11s.

The Community Centre also houses the town's library, a café as well as an adjacent children's play park and recreation ground.

[www.charlburycommunitycentre.org.uk](http://www.charlburycommunitycentre.org.uk)

If you do not want to go to the sports centre to get fit there is an active Morris Dancing and a recently set up WhatsApp walking group where one can join occasional, informal and impromptu walks..... sign up via 07974 565 618. There is music at the Cricket club on Friday evenings in the summer and recently a Tai Chi Club. There is something for everyone.

There are so many different clubs and societies that it is difficult to keep up but thank goodness for

[www.charlbury.info/](http://www.charlbury.info/)

a phenomenal real time website embracing everything (and I mean everything!) that is up for discussion and a live events board. Keep looking at it and discover Charlbury— you will be very welcome.

*Paul Jackson*



*Vaccination Riots 1897*



## All Together In Charlbury – a local helping hand

This is to confirm that All Together In Charlbury (ATIC) offers the following kinds of help through our team of local volunteers to Charlbury residents of all ages and circumstances who, for whatever reason, are unable to carry out a task themselves and who have no family or friends available to help:

- transport to hospital or other medical/health/care appointments
- transport for other purposes such as to get to the shops or the hairdresser, to take part in a local activity or club or to visit someone in hospital or care home
- getting shopping or prescriptions for someone
- household tasks (like changing a bulb or smoke alarm battery) or occasional gardening jobs
- letter writing, simple form-filling or help with accessing online information
- reading, if you have difficulty reading for yourself
- someone to pop in from time to time for a chat.

**To ask for ATIC help ring 01993 776277.** This will get you to the staff of Volunteer Link-Up who kindly act as our call centre and who will see if we can meet your request. The phone line is staffed from 9.00 a.m. to 4.00 p.m. Monday to Friday with a regularly-checked answerphone when staff are not available.

### **Would you like to join our team of volunteers?**

By volunteering for ATIC you will not be tied to specific days or times (unless you choose this). You can help in the way(s) that you want to and when it suits you and your life. You can choose the tasks that you offer to help with depending on your interests and strengths and then on

your availability. You will be under no obligation to agree to cover every request for help. We do not expect our volunteers to be out of pocket as a result of giving help. For example, if you provide transport, your passenger will pay you 45p per mile to cover expenses. If you want to find out more, contact the ATIC Management Group on 07487 413892 or [charlburyalltogether@gmail.com](mailto:charlburyalltogether@gmail.com).

### **Did you know.....?**

**The Community Information Network (CIN)** is a useful service with local workers to help anyone over 18 find out and access support services and activities available, if you need them. Phone 01235 849434 or email [network@ageukoxfordshire.org.uk](mailto:network@ageukoxfordshire.org.uk). There is further information on the AgeUK Oxfordshire website: [www.ageuk.org.uk/oxfordshire/](http://www.ageuk.org.uk/oxfordshire/)

**Attendance Allowance** is a non-means tested-benefit providing extra money to those who may need help at home due to an illness or disability. Claiming Attendance Allowance won't reduce any other income received and it is tax-free.

Attendance Allowance does not have to be spent on a carer and can be used on whatever is needed. It could be spent on other types of help in the home or equipment to help someone stay independent. For example, it could help pay for heating bills, delivery of pre-cooked meals, help with gardening or transport.

Don't assume that you or someone you may be caring for are not eligible –find out more. AgeUK Oxfordshire has an information guide about this on their website: [www.ageuk.org.uk/oxfordshire/](http://www.ageuk.org.uk/oxfordshire/)

To get in touch with AgeUK Oxfordshire's Information and Advice team call **0345 4501276** and ask for the helpline. .

*Meryl Smith*



## Charlbury Scout Group

We began our new Scouting year in September with a wonderful response from both parents and young people to attend our AGM (perhaps encouraged by the prospect of a practical activity and/or food)! In any case, trees and shrubs were pruned, windows and floors cleaned and the Scout Hut refreshed for the new term – thank you to all who helped in any way (including Baloo who ran the table cricket game at the end). We also said 'goodbye and thank you so much' to John Chettleborough, who stood down as Chair of the Executive Committee after nearly five years' support for the group – our best wishes go to him and his family.

We were also delighted to return to the Charlbury Street Fair later in the month – so many people came to tell us about their Scouting experiences and we were fortunate to have some very generous donations.

Scouts have enjoyed returning to their traditional games on Nine Acres (avoiding the posts!), as well as a wide range of activities such as navigation, First Aid practice, shelter building and a fantastic evening of learning circus skills. They also attended a Jamboree on the Air/Internet event, going by train into Oxford, speaking to a Belgian Scouter and creating virtual campsites on Minecraft.

Both Cubs and Beavers sections are now full, with a waiting list for each and new enquiries coming in all the time. Cubs have been practising their First Aid and teamworking skills, also joining the Oxfordshire Scouts Minecraft server and looking at Harvest Festival traditions.

Meanwhile, Beavers have learnt some new knots (with the help of strawberry laces), walked to Banbury Hill Farm and (as part of the Safety badge) visited Charlbury Fire Station – many thanks to the watch for providing such a brilliant experience for the young people.

By the time of publication, we hope to have participated in another important event in the Charlbury calendar – representing Scouting at the Remembrance Day parade and service. It's only two years since last time – but how long ago that seems! Then we look forward to our Christmas activities, including a camp for the Scouts and the return of some County and International events next year, supported by the Oxfordshire Scouting team.

Many thanks to our fantastic Leaders and Young Leaders, as well as parents, who have supported the group through this last 18 months of lockdown, Zoom, tests and isolation. We wish you all a peaceful festive season - stay well and stay Scouting!

*Cheryl Horsey  
Group Scout Leader*

## Charlbury Day Centre

Caution is still the order of the day, because of our very vulnerable membership. We have been unable to reopen for a whole day yet, but instead we have become more of a luncheon club. Members, who want to, can come down to the Memorial Hall to meet up (with all precautions taken) and chat to others over a hot lunch. Those, who prefer to stay at home have lunch delivered to them. It looks as if this situation is likely to continue for the moment, until everyone feels safer.

As always a huge thank you to all the volunteers, who have kept this service going.

Let's hope we all have a better year in 2022

*Bob Tait*



## ST MARY'S CHURCH CHARLBURY 3rd CHRISTMAS TREE FESTIVAL

This is the third year we have run this popular event, which brings local organisations and people together in the community. It will run from Thursday 9<sup>th</sup> December to Monday 27<sup>th</sup> December and we will have fifty rooted trees outside in the churchyard - as this was so popular last year. The children's trees will be inside the church.

As well as the display of trees, there will be a café inside the church and events on the first weekend including a 'Jazz and Trees' party on Friday 10<sup>th</sup>, a 'Christmas Crackers' concert on Saturday 11<sup>th</sup> and an evening of prose and singing called 'The Countryside at Christmas' on Sunday 12<sup>th</sup>. Tickets for the first two events can be bought from early November at Charlbury Deli and Charlbury Cornerstone.

The money raised will be donated to the St Mary's appeal and help to preserve our beautiful building for future generations.

Further information can be obtained from  
St Mary's Church [parishoffice@charlburychurch.uk](mailto:parishoffice@charlburychurch.uk)  
Charlbury town website <https://www.charlbury.info>  
Hilli Waller [hilli.waller@gmail.com](mailto:hilli.waller@gmail.com)





## St Mary's Christmas Services

### Messy NativiTea

Sunday 5<sup>th</sup> December 4pm in St Marys. Family event with crafts, Nativity story and a picnic tea. Booking required.

### Community Carols - Saturday 18<sup>th</sup> December

Come share some Christmas spirit with carols, mince pies, and mulled wine in the centre of town. The carols will be led by Jennie Grierson and her Christmas choir. Feel free to join in with the singing or just listen to the joyful music from the heart of our town. Festivities begin at 7pm. More details on the Charlbury website in December.

### Traditional Carol Service at Shorthampton

Sunday 19<sup>th</sup> December 3pm in All Saints Church, Shorthampton

**Christmas Eve** In a change to our normal Christmas eve service we will now have two services:  
4pm Carol service in St Marys – booking required  
7pm Carol service in St Marys – booking required  
11.30pm Midnight service at St Marys

### Christmas Day

8am Holy Communion in St Marys  
9am Holy Communion at All Saints Shorthampton  
10.30am Christmas Morning service at St Marys

Service bookings will be via Eventbrite. Contact Jo on [parishoffice@charlburychurch.uk](mailto:parishoffice@charlburychurch.uk)

## Farewell to Jane and Ian

A small get together was held in August in the Corner House garden, to mark the farewell of Jane and Ian Parsons as caretakers of the Corner House and War Memorial Hall.

Ian and Jane Parsons are as much an institution in Charlbury as the premises that they have looked after.

After sixteen years of managing and looking after the Corner House and War Memorial Hall so diligently, they have decided to retire. Between them they have done an amazing job for the Town and they will be much missed. We wish them both a well deserved and happy retirement.

*Bob Tait Vice Chairman*



*Jane and Ian*

# Charlbury Church Services



## Charlbury Baptist Church, Dyer's Hill

Contact: Secretary (01608 810107)

**Sundays 10.30am.** Communion on the first Sunday of each month

**Christmas Day 10am** for a short celebration  
No service on 26<sup>th</sup> December

**Thursdays 7.45 pm** Join us on zoom for midweek study/discussion

You are always welcome to visit our Quiet Garden .

[charlburybaptistchurch@gmail.com](mailto:charlburybaptistchurch@gmail.com)

[www.facebook.com/dyershill/](http://www.facebook.com/dyershill/)



## St Mary's C of E Church, Church Street

St Mary's Church, Charlbury and All Saints  
Shorthampton

Full details of all church services are available in the Leaflet or in the Church porch

Vicar – Revd Dr Sally Welch Parish Office (01608 810230)

[www.stmaryscharlbury.co.uk](http://www.stmaryscharlbury.co.uk)



## Friends' Meeting House, Market Street

Meeting for Worship at the Friends Meeting House

Sunday mornings 10.30am

For further details contact Sue Terry (01608 811033)

email: [sueeterry@btinternet.com](mailto:sueeterry@btinternet.com)

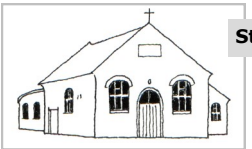
You are very welcome to join us



## Methodist Chapel, Fishers Lane

Sunday services at 10.30am

Further information from Gill Grason (01608 810154)



## St Teresa's R.C. Church, Fishers Lane

Sunday Mass. 9.15am every Sunday at St Teresa's.  
Weekday Masses;

9.30am on Monday, Tuesday, Thursday and Friday;

Wednesday: 7.00pm at St Teresa's. followed by  
Exposition/Adoration.

Friday Mass followed by Exposition/Benediction or  
Stations of the Cross

Priest. Fr Clive Dytor, The Old Drapery, Church Street,  
Charlbury. Tel: 07484 158642.

## Churches Together in Charlbury

At the time of writing the UN conference on climate change, COP26, is just starting. Across the world people of different faiths are praying that our leaders will really lead and set the agenda for halving greenhouse emissions by 2030. This is the only way that we can hope to reach net zero by 2050 and keep global warming in check.

Some politicians, unwilling to make unpopular choices, suggest the reduction in the use of fossil fuels can be achieved entirely by the introduction of new technology. Scientists, religious leaders and more realistic politicians, along with climate activists, know that a profound change of attitude is needed from all of us. Those of us who are relatively wealthy have to learn to make do with less and people everywhere have to value and protect our forests and grasslands, rivers and oceans, allowing the natural world to heal and grow towards a sustainable future.

In October Churches Together in Charlbury held the first united service since January 2020. The theme was 'God's Good Earth', reflecting on the beauty of the world and the damage being done to nature by our demand for more and more resources. At the end there was a commitment to think globally, to trade fairly, to live responsibly and to love the world as God loves it.

After the service we held our AGM at which Marjorie Glasgow, our new Lord-Lieutenant of Oxfordshire, spoke, following up the theme of action on global warming. She outlined four steps

we can take in Charlbury to make a difference for climate change:

- Know our own carbon footprint.
- Use whatever services are available to reduce our footprint.
- Be active in reducing our community's footprint.
- Be aware of potential climate emergencies, prepare for such emergencies, be prepared to help the vulnerable in our community.

She has kindly offered to help us to take this agenda forward.

The scale of the problem is daunting but we must have hope that compassion and generosity will outweigh selfishness and greed.

Hope is what the Christian message is all about. For Christians the coming of Jesus which we celebrate every Christmas, was the start of a new way of living, a guide to new opportunities for loving and a sign of encouragement that we are not alone. At Christmas many people give generously to those in need and try to offer meals and places to stay so that no-one is left out. If we could maintain this Christmas spirit throughout the year, reaching out across barriers of distance and culture, we would be on the way to solving the massive problems that face humanity and discovering a world where we would all want to live.

*Rosalind Scott  
Secretary to Churches Together in  
Charlbury*

### **Font Café at St Mary's Church is delighted to be open again.**

Come to relax, unwind, read the papers, catch up with friends and colleagues and enjoy some delicious home-made cake along with a steaming cup of Fair Trade tea or coffee

### **Font Cafe**

**St. Mary's Church, Charlbury  
10am to 12 noon every Thursday**

For smaller children we provide a play area with toys. Free Wi-Fi available  
Covid-19 restrictions are still in place so we will provide table service only



## Charlbury Town Council News

Contact: Lisa Wilkinson, Town Clerk at [charlburytownclerk@gmail.com](mailto:charlburytownclerk@gmail.com) or 07311 259412  
c/o Corner House, Market Street, Charlbury, OX7 3PN.  
[www.charlburytowncouncil.co.uk/](http://www.charlburytowncouncil.co.uk/)

### ***Farewell to Roger Clarke***



Roger Clarke has finally decided to put down his pen as Charlbury Town Clerk and start a well-deserved retirement. He has been in post since 1979, providing an incredible 42 years of unbroken service to Charlbury.

During his tenure, the town has expanded greatly and the clerk's role has grown with it, yet Roger has always been steadfast and reliable, making sure the town has never failed an audit, able to organise and publicise public meetings on topics of urgency and sensitivity, and keeping many a Council chairman on the straight and narrow.

His accomplishments—too many to enumerate in full here—include the detailed planning and security arrangements for the visit to Charlbury by HRH Princess Anne in 2006, management of the cemetery and town allotments, overseeing the development of the hard play area and the pavilion at Nine Acres, the skate park and play area at Ticknell Piece, the extension of the cemetery, and negotiations with Thames Water for the acquisition and subsequent transfer to the Wychwood Project of a conservation lease for Wigwell Nature Reserve. His sage advice and hard work have impressed councillors for decades, and he will be missed.

### ***New Town Clerk***

Charlbury Town Council is delighted to announce the appointment of Lisa Wilkinson as the new town clerk. Lisa is currently completing her obligations in her current roles as parish clerk for Shipton-under-Wychwood and Hailey, as well as Financial Officer for a council near



Banbury. Charlbury Town Council will now be able to use powers awarded to it under the Localism Act 2011, meaning that we have the opportunity to move beyond simply influencing but entitled to do anything an individual is allowed to do under English law.

This could mean, for example, being able to set up a limited company to provide services. The council does not currently have plans to undertake any such activities, but may explore such opportunities down the line. Lisa will be fulfilling the statutory duties of a town clerk, and is also going to get us started on developing and implementing Charlbury's climate action plan, consistent with the Council's declaration



## Charlbury Town Council News

of a climate emergency in November 2019. Watch this space.

### **New council postal address**

The Corner House & Memorial Hall Committee has given approval for the town council to use the Corner House address as our formal mailing address with immediate effect. Any mail for the town council should now be delivered to Charlbury Corner House, Market Street, Charlbury, OX7 3PN.

You can read all of the minutes and reports associated with the council's activities at

[www.charlburytowncouncil.co.uk/](http://www.charlburytowncouncil.co.uk/)

### **Funding boost**

We are developing ideas with West Oxfordshire District Council to take advantage of funding to boost town centres and encourage back visitors. We are hoping amongst other things to smarten up noticeboards and benches in the town centre, and create a new town map. Lots of other ideas have been put forward, including slowing traffic in danger areas and making the Playing Close more accessible for people with mobility problems. These are not all within the scope of the funding available, but we'll think about other ways to advance some of these ideas.

### **Bin it!**

At the skate park, Cllr Claire Wilding has been using our new equipment to clean up litter and broken glass. Most skate park users bin their litter, and some kind people also clear up after others – thank you for your help to keep this facility safe and clean.

Many of us have been enjoying the warm autumn weather at Nine Acres, but as a result the bins are sometimes overflowing, especially when people are having picnics and children's parties. If you have lots of rubbish, or if the bins are full, please take your rubbish home with you, as the bins are only emptied twice a week and we can't increase the

frequency without significant extra cost.

On a related note, we have received numerous reports that some dog owners have been ignoring rules about picking up after their dog. We are in touch with enforcement agencies and would welcome reporting of any information that might lead to offenders being fined.

### **Traffic survey**

The Town Council is considering whether changes to the road network in Charlbury would make our town a quieter, pleasanter place to live and visit. To be able to tackle problems such as traffic and speeds on the Slade, and the lack of amenity in the town centre, we first wanted to take a snapshot of how drivers are using the town – where they are driving to/from, and when. That way, we have hard data on which to base any plans we may come up with to make Charlbury an even better place.

An incredible 28 volunteers signed up to monitor six junctions around town, at three times of day, one day during the school holidays in August and the other on a school day in September. It was amazing that so many people were prepared to get out, do the surveys, and write up the results. They are testament to what a fantastic community we have here in Charlbury. We will share the survey results in the next edition of the Chronicle.



## **E-bikes**

We ran our second electric bike try-out event on Wychwood Paddocks on 11th September. Dozens of residents tried out a range of e-bikes, from lightweight hybrid bikes for shopping and trips to local towns, to cargo bikes that can carry children and/or quite heavy loads such as shopping.

The idea is for people to see what the bikes are like to ride, with a view to potentially buying their own. About half a dozen at this year's event said they planned to go on to buy an e-bike, which will (slowly but surely) reduce the



number of cars on local roads. The council is also looking into obtaining funding to acquire its own e-bike which would be loaned to residents for periods of up to a fortnight at a time. The reason for doing this is that it's not until people have used an e-bike for a short period, and worked out how it fits into their lives, that they decide to buy one. If this scheme went ahead, we would need a local mechanic to keep an eye on the bike between loans. The mechanic would receive free bike maintenance training with Windrush Bike Project. If this is something that might be of interest to you, please contact Cllr Frances Mortimer on [francesm@charlburytowncouncil.co.uk](mailto:francesm@charlburytowncouncil.co.uk) / 07967 581541.

## **Street Fair**

Town Councillors had a busy day at Street Fair on 18th September. We talked to hundreds of residents, and visitors perused our extensive poster-based

presentations of the council's work and plans. Thank you to everyone who contributed their ideas and, voting for how to spend WODC's 'welcome back' fund (see above).



Street Fair saw the launch of our local food leaflet, lots of discussion around projects planned by the Journeys and Land & Nature teams, the trialling of our electric car club survey and a popular electric vehicle demo at the Spendlove Centre.

## **Permissive paths**

Permissive paths through Nine Acres Recreation Ground will be closed all day on Wednesday 5th January 2022 in accordance with recommended practice to ensure that the access retains its permissive status. Similar closures of permissive paths through Wigwell will occur on the same day by order of the Wychwood Forest Trust. Residents with gates opening onto to Oxpens Allotments, Nine Acres Recreation Ground and Wigwell are also reminded that these do not constitute a Right of Way.

## **Fallen leaves, snow and ice**

At this time of year, fallen leaves can become slippery and cause a hazard, particularly to elderly and frail people. If you are able to clear leaves from pavements near your home that would be appreciated. As winter approaches, ice and snow may also be a possible hazard.

If this happens please try to clear your own 'patch' and look out for vulnerable neighbours – thank you.

---

## From County & District Councillor Liz Leffman

01608 810153, 07741 073088 [liz.leffman@oxfordshire.gov.uk](mailto:liz.leffman@oxfordshire.gov.uk)

---

The past six months have been a very exciting time for the new administration at Oxfordshire County Council. We have started to see some of the key priorities that we agreed as a Fair Deal Alliance come through the pipeline, and these will have an impact in Charlbury. The first of these is the decision to make "20 the new 30". Charlbury was among towns and villages that led the way on having a 20mph speed limit, having implemented this several years ago, and when I was re-elected last May I promised to campaign for 20mph everywhere. So it is great to see this coming to fruition and we will be the first county in the country to do this across the whole of our area. It will take three years to roll this out but it will be done and I will be working with the Town Council to get the limit of the 20mph zone extended in Charlbury, as I know that this is what many residents want. The police have agreed that if 20mph is the speed limit, that will be enforced.

Another major step forward is the Bus Service Improvement Plan that has now gone to government for funding. The intention is to provide a more regular bus service across the County, with information boards being extended beyond the major towns, and better rural networks. Eventually we want to have mobility hubs which people can cycle to or drive to and then take the bus. We also

plan to connect bus services to the trains, making it possible for people to use their cars less.

As well as transport, we are introducing a county-wide youth service. Funding for youth services was severely cut back under the previous administration, and we are investing £1 million this year, employing youth officers across the county and improving access to services. Our young people have suffered greatly from the effects of the pandemic and it is vital that we support them now, to ensure that they have a bright future.

This is just a flavour of what we are doing, and we are going out to consultation on this and our other priorities. We have completely overhauled our consultation process and have had a number of very successful meetings with town and parish councils and the voluntary sector and we have sent questionnaires to a random sample of residents. This is a process we will continue with as we recognise that as your elected representatives, we need to hear from you on a regular basis.

I'd like to take this opportunity to wish everyone in Charlbury a very merry Christmas, and a happy New Year. I hope that 2022 will be the year when we finally say goodbye to the pandemic.

*Liz Leffman*

### **CHARLBURY FARMERS' MARKET on the Playing Close between 9am and 1pm on Saturday, December 11th**

Charlbury Farmers' Market is administered by Thames Valley Farmers' Market Co-operative Ltd. and organised by Geoff & Janet Burroughs.

Any queries, please contact Geoff or Janet on the contact details below.

Email: [burroughs871@btinternet.com](mailto:burroughs871@btinternet.com)  
tel: 07969 208518, 01608 810260

### **CHRONICLE ADVERTS**

Advertise your business in the **Charlbury Chronicle** and reach over 1550 residences.

To place an advert please ring Graham Jowett on 01608 810666 or email: [gjowettchronicle@btinternet.com](mailto:gjowettchronicle@btinternet.com)



## Charlbury Beer Festival *Oktoberfest*

What a wonderful time was had by all! A selection of thirty hand-picked real ales, six ciders, plus wine and gin, as well as food from Copper Pot Catering kept everybody happy. The weather was “on message” too, remaining dry throughout, so those attending could sit inside the Memorial Hall, or make use of the lovely garden at the back of the Corner House.

After the disappointments of 2020 and the summer of 2021, we were finally able to deliver Charlbury a version of the Beer Festival. We branded our event *Oktoberfest*, and tried to bring a hint of Bavaria to Oxfordshire on a beautiful autumnal weekend. Granted it was a more modest version of our usual event, but this pared down offering gave us the opportunity to welcome people to three separate four-hour sessions spreading over Friday and Saturday 15/16 October.

We switched venue, downsizing from the Cricket Club to the Memorial Hall, which meant we were able to concentrate our resources and focus on a smaller gathering.

Music accompanied each of the three sessions, so on Friday night we had covers from Boogie Me, Saturday afternoon saw an acoustic set from Dave Oates and Jess Marshall, whilst the Saturday evening welcomed a triumphant return of perennial Beer Festival favourites Hope and Glory, bringing their joyous ska sound to Charlbury once more setting the party tone with dancing all round.

We were able to serve the beer from an outdoor marquee, and were fortunate that the Charlbury community came good

with plenty of “Beermakers” joining the regular committee members to work the bar. For those interested in this sort of thing, the first beer to run out was Take a Run at the Sun from Nottingham’s

Liquid Light Brewery.

Feedback was extremely positive:

- “It was the highlight of my holiday so far” – a visitor from Cornwall.
- “I’m really impressed. This is a really brilliantly-organised festival”.
- “The organisation was amazing”.
- There were lots of rave reviews about the range of beer, one regular suggesting it was the best selection ever.

As we all know, the purpose of the Charlbury Beer Festival is to raise money for good causes, and our *Oktoberfest* proved no exception, with over £5,000 being generated for charity. Thank you Charlbury! Also thanks to our many sponsors for helping us along the way, especially Sonnox, who were the headline sponsors for *Oktoberfest*.

Throughout we were mindful of the Covid situation, and so tickets were sold in advance, and all ticket holders were prompted to arrive with proof of their Covid vaccination status.

We were thrilled to welcome around 400 people in total, comfortable that we were applying government guidelines to all those entering the site.

*Nick Millea*

## A Life's Day: Vicky & Mike Pratley, Charlbury Dairies

*(Ed: this article has been taken from the very first edition of the Chronicle, courtesy of Diana Potten)*

We see Charlbury as few other people do, and in the morning it is a wonderful place. It's peaceful and there is no traffic around, no fumes to pollute the air. Only the cats are in the streets.

At 3am we are up and ready to meet the milk truck when it arrives from London. We have a pot of tea with the driver and by 3.15am we're ready to start our day. Mike loads the float and I do the first deliveries on foot in Market Street. I know all the cats and they know I have handfuls of food to feed them.

Then we go down Dyers Hill where as well as the ducks, we see herons and kingfishers on the river banks—one heron is a regular, and we call him Herbert. In the spring, the sides of the railway bridge have masses of baby rabbits peeping out of their burrows. There are no signs of them later on when the traffic builds up. On the way to Walcot Farm we sometimes see foxes, deer and stags—and we never forget to take bread to feed the pigs at the farm. "Well that's our nature run done for today" says Mike. We then complete our deliveries in the centre of the town.

By 5.30am the traffic is starting to build up, but it is not nearly as heavy as it was when the sorting office was here. Given good weather, we have finished by eight o'clock. Snow and ice slow us down though we've never yet got stuck, and sometimes we have to carry crates and do Dyers Hill and Fishers Lane up to the Playing Close on foot. We cover eight and a half miles and deliver to about 500 homes. The rest of Charlbury is looked after by our other float.

When we get home it's time for a hot bath and breakfast and at 9.30am we're back at work again. The next day's milk

has to be ordered and the shop is open. Mike cleans the float and makes sure the cold rooms and fridges are up to the standard of hygiene required. I go either to the Cash and Carry, the Bank or do the books and update the computer.

Although some of these jobs may seem tedious (luckily we don't have much to do with EC regulations) I'd rather do it than housework, particularly the ironing!

Lunch is our main meal of the day and afterwards I go back to the office and Mike will do some gardening or use his skills building walls and doing metalwork.

On Thursdays we are both out collecting payment from our customers—we enjoy the chance to meet them, as not many are up to see us in the early morning!

We know many of the older people really well and can often run errands for them and give them a point of contact. I sometimes wonder if there will be a milk round in future years, as young people today do not seem to want their milk delivered.



In the evening a little television, perhaps, and then to bed by 9 o'clock. Sleep comes quickly, it's been another busy day.

## Dementia Friendly Notes

The Alzheimer's Society has recently drawn attention to their full list of practical publications aimed at helping people living with dementia and their carers to live as well as possible with the disease.

The full list of publications can be found on their website:

[www.alzheimers.org.uk/get-support/publications-factsheets/full-list](http://www.alzheimers.org.uk/get-support/publications-factsheets/full-list)

Publications can be downloaded from the website or hard copies can be ordered.

**The dementia guide:** Comprehensive booklet for anyone recently diagnosed with dementia. Printable version and also an audio version

**Caring for a person with dementia: A practical guide** covering all aspects of caring for a person with dementia:

**The memory handbook:** Booklet for anyone with memory problems, including dementia

Sections on:

Understanding your memory, Coping with memory problems, Memory aids and tools, Memory strategies, Staying healthy, Services and support.

**One page helpsheets (10)** – printable and audio versions

What is dementia? What are the symptoms of dementia? What are non-drug treatments for dementia? What are drug treatments for dementia? How can a person with dementia get support? How can a person with dementia plan ahead? How can a person with dementia cope with memory loss? How can a person with dementia stay healthy? How can a carer communicate with a person with dementia? How can a carer for a person with dementia get support?

Also Helpsheets 1–10 combined in one document.

**Booklets for people living with dementia**

**Guidance on the practical and emotional aspects of living with dementia**

Including:

Understanding your diagnosis (a booklet on each type of dementia), Managing your money, Keeping safe at home, Driving, Keeping active and involved, Your relationships, Living alone, Employment, Planning ahead, LGBTQ+: Living with dementia, Making your home dementia friendly

**Factsheets: Emotional and practical guidance**

Including:

Using equipment and making adaptations at home, Using technology to help with everyday life, Driving and dementia, Supporting a person with dementia who has depression, anxiety or apathy, Dental care and oral health, Communicating, Walking about, Continence and using the toilet, Supporting a person with washing and dressing, Grief, loss and bereavement, Aggressive behaviour, Understanding and supporting a person with dementia, Changes in behaviour, Supporting a person with memory loss, Changes in perception, Physical activity and exercise, Understanding denial and lack of, Understanding sleep problems, night-time disturbance and dementia.

But after looking at all this detailed information- Remember: someone living with dementia is a unique person to be appreciated and included

Even if someone who has dementia is not able to do all the same things that they used to, it is important to remember that they are still the same person and have probably retained some

lasting abilities and skills from the past.

All brains are different and behave differently when they cannot work properly anymore.

No two people with dementia will behave in the same way. We need to look beyond the dementia symptoms to find and appreciate each person.

**Enter the person living with dementia's world - don't expect them to struggle to enter yours**

There are ways of helping people living with dementia to avoid further stresses or challenges above those they are already coping with:

***Listen to the expert***

The expert is the person living with their own particular expression of dementia. Listen to what they are saying and see if that gives you a clue as to how they are feeling or what they need.

For most people with dementia feelings are more important and lasting than memories or facts.

It is helpful to try to keep the person with dementia feeling safe and comfortable within any confusions that they may be having.

***Avoid direct questions and do not contradict***

**Dementia Friendly Charlbury (DFC)** is a group of volunteers who want Charlbury to be a friendly and welcoming place for everyone to live, especially people with memory and thinking problems.

If you have any comments or concerns to pass on to DFC, you can contact us on 01608 810192 or email us at [charlburydf@gmail.com](mailto:charlburydf@gmail.com).

Meryl Smith

**Your bin collection day is:**

**TUESDAY**

Unless delayed by a **Bank Holiday (\*)**

**Green week**

Recycling  
Food waste  
Garden waste




**Grey week**

Rubbish  
Food waste



No garden waste collection today



**Visit our website or contact us to:**

- **Sign up** for garden waste collections (chargeable service)
- **Report** a missed collection (within two working days)
- **Request** a food waste caddy
- **Replace** a damaged or broken bin
- **Ask a question** about recycling


 [www.westoxon.gov.uk](http://www.westoxon.gov.uk)

 **01993 861025**

*Thank you for recycling!*

In the event of severe weather disrupting services please visit our website for more information.

Updates will also be available on our social media channels.




WEST OXFORDSHIRE  
DISTRICT COUNCIL

 **West Oxfordshire recycles**



## Is competition good for gardening?

Over the last two years The Charlbury Garden Society has produced a full programme of activities without holding any actual Fruit Flower and Vegetable Shows.

So are Shows necessary? Some would say they are an anachronism but so far we think we have proved them wrong.

Perhaps there is too much competitiveness in today's world. Is it not enough to display horticultural excellence without having to beat others?

For some members talks and visits are what the Society is about. But for others the competition and display of a flower and vegetable Show is essential.

I still remember the excitement just after the war, in the 1950s, of seeing my Dad's dahlias, chrysanthemums, blackberries, apples and gooseberries winning prizes in the Flower Show run by the "Inverness Avenue Social Club", (the road I was born on) in North London. There was even a small envelope with his winnings which as a small boy I found rather exciting.

The Charlbury Gardening Club (formerly the Charlbury and District Horticultural Society) has been holding Shows of various sorts for possibly over 100 years and old programmes from that period show not only displays of fruit and vegetables but even dancing in the afternoon with a live band.

A photograph on the Charlbury website from between the wars, shows a large marquee with visitors in their Sunday best, and it was clearly an event of great importance.

The Charlbury Shows, in particular the Annual Show, is very competitive and offers prize money to the winners which is we believe the highest in the County.

Judges have said in the past that the standard of entries in the Annual Show is greater than even the Oxford Show so we are very proud of what had been achieved.

Peter Bridgman, a great exhibitor in the past, is photographed here making final adjustments to one of his famous floral creations. It has been a pleasure to honour Peter's memory by dedicating the Amelanchier tree in the new Corner House border – do go and see the plaque placed there earlier this month.

The last two years of online talks, Zoom meetings and self-drive trips have been really successful and have occurred with a minimum of Covid risky contact. The team that have made this happen are to be congratulated and will continue to do so, whether we hold Shows in the future or not.

For me, although I have rarely entered or won in any of the Show categories, the events are delightful milestones in the gardening year. The Spring Show is a riot of daffodils and sometimes tulips and other spring flowers and the fact that no prize money is awarded in this Show seems to suggest that entrants are doing it to make – well – a Show for visitors to enjoy.

On the other hand, the autumn display of vegetables fruit and flowers including some beautiful (and sometimes very large) specimens is breathtaking. "Did you see the length of those parsnips?" The society has to have a set of scales to weigh the entries for the heaviest onions.

Contrary to myth, these large vegetables do actually taste every bit as good as their normal sized counterparts.

The competition is taken very seriously though, and the Society has had to introduce an appeals system whereby exhibitors may, on payment of a nominal



deposit, object to the results of a particular class. A small subgroup then has to adjudicate the complaint.

The Annual Show at the beginning of September also contains cookery classes, art, photography and handicraft classes. Indeed, on more than one occasion the "Best in Show" has been won by entries in these classes.

So, inevitably, one is drawn to the conclusion that, cliché time, "it's not just the winning it's the taking part"

There is a lovely poem by Philip Larkin entitled "**Show Saturday**" which, whilst about a large show with animals and so on, does contain the following lines:

*The long high tent of growing and making, wired-off  
Wood tables past which crowds shuffle, eyeing the scrubbed spaced  
Extrusions of earth: blanch leeks like church candles, six pods of  
Broad beans (one split open), dark shining-leafed cabbages – rows  
Of single supreme versions, followed (on laced  
Paper mats) by dairy and kitchen; four brown eggs, four white eggs,  
Four plain scones, four dropped scones, pure excellences that enclose  
A recession of skills. And, after them, lambing sticks, rugs,  
Needlework, knitted caps, baskets, all worthy, all well done.*

We hope that 2022 will enable us to safely hold a regular Spring and Annual Show and look forward to seeing you there either as an exhibitor or as a visitor. Before then, of course, the Garden Society will be busy with various talks and get-togethers, restrictions and the virus permitting. On December 9<sup>th</sup> we hope to be able to have a face-to-face members' Christmas Social. More details will follow. On January 20<sup>th</sup>, John Tyler, who is the former Wildlife Warden and former Fellow of the Royal Entomological Society will talk to us via Zoom on 'Gardening for Wildlife' and on February 17<sup>th</sup>, Rob Jacob the Horticultural Manager at Waterperry Gardens will tell us about the herbaceous border at Waterperry. Do check out our website [www.charlburygardensociety.org.uk/](http://www.charlburygardensociety.org.uk/) where you can also find out about renewing your membership or joining if you are not already a member.

*Geoff Holmberg, Charlbury Garden Society Chairman*



**Peter Bridgman**

**Charlbury Amateur Dramatic Society**

**presents**

# BLITHE SPIRIT



**Written by**  
**Noël Coward**

**Directed by**  
**Sue Haffenden**

**25th, 26th & 27th November at 7.30pm.**

**At the Memorial Hall, Charlbury**

Tickets: £10 to include programme, Concessions £7.50.

Available from Cotswold Frames, Charlbury or on the door.

Please pay by cash/cheque with exact money. Bar opens 7pm.

( Social distancing to be observed and masks to be worn until seated)



## CADS News

It has been lovely to begin our activities after the long break due to Covid19.

Auditions took place at the beginning of September and rehearsals are going well so far.

### **BLITHE SPIRIT by NOEL COWARD**

Is a classic farce and is aimed to lift spirits of audiences.

Performances will be held at Charlbury Memorial Hall on Thursday - Saturday, 25th - 27th November. Tickets can be bought from Tim Widdows' shop, next door to the Rose and Crown.

We hope that our play will be well attended and if anyone is available to

help backstage or front of house please telephone Sue Haffenden, 01608 676642. New members are also very warmly welcomed, remember this is your amateur dramatic society.

We hope to be able to hold more Workshops during the oncoming months.

We shall also be putting on some 'garden' performances over the summer months.

We have a page on the Charlbury Website, under Community, which will keep you abreast of any developments.

*Helen Wright  
Secretary*

**PYO HAMPERS AT THE DELI**

COME AND PICK YOUR OWN ECO-FRIENDLY CHRISTMAS WRAPPED BOXES  
OR HAVE ONE OF OUR OWN PREPARED

NEW SPECIAL CHEESE SELECTION BOX FROM £14.99. ADD OUR RECOMMENDED WINES?  
FREE LOCAL DELIVERY. LATE NIGHT SHOPPING AND WINE TASTING UNTIL 8PM FRIDAY DEC 10TH.  
FOR MORE INFORMATION CALL 01608 811157 OR [HTTP://CHARLBURYDELI.CAFE/HAMPERS](http://CHARLBURYDELI.CAFE/HAMPERS)  
CHARLBURY DELI AND CAFÉ, TOWN CENTRE  
MONDAY TO SATURDAYS 8.30 TO 4.30

*Richard Unged-Thomas*



## Charlbury Tennis Club 2021

Charlbury Tennis Club operates all year round and with mild winters, newly painted courts and good floodlights, winter is a great time for tennis!

We are a well established tennis club that caters for both those who want to play competitive league tennis and those who want to play socially. If you or your children have been inspired by Emma Raducanu, join them up! We are anxious to attract young members and in conjunction with Faith Heron have run tennis camps in the vacations and half terms. We also have a young tennis player on the committee to channel ideas and views from younger tennis players.

We presently run several men's, ladies and mixed doubles teams with matches played both at the weekend and on week day evenings all year round. The club also runs three weekly playing sessions.

We welcome everyone of all ages and abilities and have one of the cheapest membership fees of any tennis club in the local area. For an annual fee of just £170 for a family (up to two adults and two children up to the age of 19 years) and £80 for an adult single you can:

- Join in social club tennis sessions all year
- Use the pavilion at Nine Acres Recreation Ground
- Take part in competitive tennis of all standards
- Come along to fun social events
- Play tennis under floodlights on all four courts – summer & winter

If you just want to join for the winter season (till the end of March), the fees are £45 (A) and £95(F).

You can also book outside club sessions via the Community Centre website ([www.charlburycommunitycentre.org.uk/booking/](http://www.charlburycommunitycentre.org.uk/booking/)) or at the desk. Bookings are free for club members.

If you are already a competitive match player and want to join one of our teams then phone Mark Jarman on 01608 811692.

Or if you are interested in playing social tennis just turn up to one of our club sessions on Sunday (2-4pm), Monday (1-3pm) or Thursday (7-9pm). There will always be a committee member there to organise a game for you.

To find out more about Charlbury Tennis Club go to [www.charlbury.info/community](http://www.charlbury.info/community) or phone the Chair, Martin Juckes, (07789 074779) or email: [charlburytennis@hotmail.co.uk](mailto:charlburytennis@hotmail.co.uk).

*Nick Johnson (Vice Chair)*



## News from Charlbury Library

Wow, it's nearly Christmas again! Hopefully the Library will feel a little more welcoming and accessible than this time last year. From the beginning of December our Children's Christmas Collection will be available which means loads of extra books to choose from, so do come and take a look.

The Library will be accessible during the Christmas period in line with the Community Centre Christmas opening hours and these hours will be advertised in due course.

And, more good news... now that we have more volunteers on board, we are able to staff the Library with a few more hours each week, to include every Saturday morning, from 10am-12.30pm. Volunteers alternate with staff on Saturday mornings (and Monday mornings) and are happy to assist customers with their library queries in the absence of staff.

The Library is looking to start its Rhymetime sessions again from January onwards, so it would be wonderful to have a willing volunteer (or two) to be able to run them. Our Library Rhymetimes are generally a mix of singing and stories aimed at pre-schoolers with their carers and are offered free of charge for about half an hour, once a week. Full training would be

given and we have plenty of simple props, instruments and stories to help the session along. Quality of singing voice for a prospective volunteer is not important, but the enthusiasm to engage a small number of keen toddlers is! There would obviously be a risk assessment carried out and family numbers would be capped to ensure the Rhymetime space was not overcrowded. If you're interested, please send an email to the address below.

We would also love to re-start our Digital Helper sessions in the new year. These used to run (pre-pandemic) once a month and customers would phone or email in advance to book their session so they could get an allotted amount of one-to-one time to address their digital-related queries.

Many customers said how useful they found the time spent with our Digital Helper Volunteer and that it had given them the confidence to use their device independently. If this is something you feel you could assist our customers with, again please send an email to the address below.

Merry Christmas Charlbury!

*Julie Ward*  
Library Manager  
[charlbury.library@oxfordshire.gov.uk](mailto:charlbury.library@oxfordshire.gov.uk)

### CHARLBURY MEALS ON WHEELS

Meals on Wheels prepares and delivers meals on Tuesdays to residents of Charlbury, Spelsbury, Chadlington and Stonesfield. **Meals now cost £3 delivered.**

**VOLUNTEERS ARE NEEDED:** Are you new to Charlbury and looking for ways to become involved in the community? This is an important service and relies on local people to drive, or to cook, or to help in other ways. Please ring Marjorie Glasgow on 01608 819253 or Susan Merry on 01608 811022 if you can help. We are also accepting names of new recipients. Please ring Marjorie or Susan.



## The Charlbury Swifts

by Andrew Lawson

We can all enjoy the delightful display of mosaic swifts flying across the library wall of the Community Centre. They were created by Charlbury residents, many of them children, and organised by the Art Society. The motif extends the theme of flying swifts created outside the Centre two years ago in the courtyard. There are 120 mosaics altogether.

Living swifts are a key species of interest to the Charlbury Wildlife Society inaugurated by Flora Gregory in October and absorbing the Swift Society, which was launched in June. (Look out for the schedule of talks in the coming year) Swifts are with us for only three months of the year, but for many of us they define the summer, with their excited screaming calls and their non-stop racing flights through our streets. This summer they arrived late. The first ones were seen on May 5<sup>th</sup>. By the end of July, the majority of the Charlbury birds – about 60 of them – had finished breeding and were assembling high in the sky for the flight back to Africa. In the first week of August they were gone, and the sky seemed desolately empty and silent without them. They will stay in the air now, probably over the Congo, until they return here to their same nest sites next spring. Swifts never settle on the ground or in trees, and only visit our buildings to lay eggs and rear chicks.

Swifts are totally dependent on built structures for their nesting sites. They will look for cracks in walls and gaps in roof tiles. But these days there are few suitable places left for them. We all want to fill any gaps, to keep our buildings weatherproof and save energy with insulation. To make nesting places for swifts, we have to go out of our way to provide them. This is where swift boxes come in. And the best time to plan for this may be when you are having scaffolding on your house. A good number of Charlbury households agreed to have boxes fitted below the eaves of their buildings over the last summer.

There are several considerations for persuading swifts to colonise your boxes. Most importantly they need to be at least 5 meters above the ground. This is because a young swift when it fledges, has to drop out of the nest and make its first flight without landing on the ground. If it did, it wouldn't be able to get up again. The adult swifts need a clear flight into the nest, and will be put off by nearby trees or intrusive wires. It is preferable to site your boxes to face North, East or West. Avoid a Southerly aspect if you can, because the box can become an oven in a heatwave. (But I have ignored this rule on our house and never had a problem).

Attracting swifts to your boxes is not a quick fix. Swifts are colonising birds, and they can be deceived into thinking that there are already birds in residence. So you will need to 'call them in' with a taped recording of swift calls. For best results you need to play the tape for several hours a day when swifts are around. It is essential that you do not aggravate your close neighbours, and you may need to negotiate times when the calls are acceptable.

The best you can hope for is for immature swifts (fledged the year before) to investigate your boxes and to return to take up occupation the following year. So it's a slow process, but once your boxes begin to be occupied your resident swifts will attract others, and you will probably want to add further boxes to build up your colony. What's more, you might decide to fit a web-cam in your swift box so that you can watch the swift family growing. Swifts are very long-lived birds – they can reach 20 years – but their lives are so perilous that very few achieve anything like that age.

We would be delighted to help anyone with advice on obtaining and fitting swift boxes and swift-call devices. Please contact me on [photos@andrewlawson.com](mailto:photos@andrewlawson.com) or Flora Gregory on [fgregory@dircon.co.uk](mailto:fgregory@dircon.co.uk)

For interest and inspiration for swift enthusiasts, we recommend the website of Bristol Swifts. [www.bristolswifts.co.uk](http://www.bristolswifts.co.uk).



## News from the Corner House

**Get a book for £1 or 3 books for only £2**

That's the offer at Charlbury's splendid new bookshop featuring quality second-hand books and open in the Anne Downer room—left of the front door at the Corner House.

This new initiative builds on the upstairs bookshop invented by Neil Pakenham-Walsh (and which still continues), but now supported by extensive collections of books collated with the help of John Partington.

Charlbury people have a great appetite for books and here's a shop to help satisfy that hunger. The selection will change day by day so pop in regularly to snap up the best titles. Unless you come, you will never know exactly what you will find. Use the bookshop also to recycle books in good condition that you no longer need.

Select from literally hundreds of non-fiction titles then pay across the passageway at Cornerstone, open Monday-Saturday 10:00-1:00pm. You can enjoy some excellent informative reads and at the same time help support the provision of the Corner House and Memorial Hall for the benefit of all Charlbury people.

And of course the Charlbury bookshop is there to also draw visiting booklovers from far and wide.

Management of the Corner House and Memorial Hall is about to be transferred from a committee of users (hirers), to a new much wider support group of trustees committed to benefit all the people of Charlbury. A new Charitable Incorporated Organization (CIO) has been formed and registered with the Charity Commission specifically to look

after and develop the buildings to enrich the lives of everyone.

The garden and the Memorial Hall have recently benefited from a fresh new look and low energy lighting systems. The CIO will seek to build on these kinds of improvements because everyone agrees our Corner House also needs updating. Cornerstone, along with the new bookshop, light the way in enriching the town and from which it is hoped more developments will spring making much-loved spaces ever more open, welcoming, vibrant, informative, and enjoyable for all of us.

*Roy Scott, chairman*



**Are you troubled by:**

**Rats  
Mice  
Moles  
Wasps etc ?**




**Then please call**

**07810 290218**

**Fully Qualified and Insured**



## Charlbury

# CHARLBURY Community Centre Community Centre

### What is happening at the Community Centre?

At the time of writing (though who knows what the near future holds?), sports hall bookings are looking healthy for the winter period. Our state-of-the-art cricket nets are being very well used at weekends, and football training and friendly sessions have all come indoors to use our modern facilities. Many classes have restarted and we have a few new ones as well, such as Yoga with Loren, Songbirds - music for the under-fives, and fun football sessions for the 2-5 and



for 5-10 age-groups.

The winter season gets busy, especially in the sports hall, as the cricket nets and football training move indoors, but there are still slots available, especially in the afternoons if you want a game of badminton, table tennis, pickleball, or whatever you fancy.

The gym is still operating on a booking system so that it never gets too busy (only two people or households can use it at the same time). To accommodate increased demand over the winter, Jason is coming in very early to make sure he can open the gym at 8am on Mondays, Wednesdays, Fridays and Sundays. Hopefully this will help some people who have to go off to work.

Jason is still putting on five circuits or body toning classes per week, and for those of you who can't come into the centre to do them, there is still a Zoom version of most of them running alongside the in-person class. So, let's all keep as fit and healthy as we can this winter.

### Calling Charlbury's teenagers

We have lots going on at the centre for infants, children and teenagers, but the latter group is hard to reach. Here are three things we are doing for over 11s:

- Youth Club on Friday evenings, run by volunteers and costing only £1.
- Basketball Club on Thursdays at 5-6pm, run by the young people themselves – more players are needed.
- Career Mentoring for 16-18 year olds. One-to-one informal chats with trained adult volunteers.

Details of all these are on our website under "Kids & Young People".

### TG's café – a real community space

The café is a popular area for socialising. Many people stay on after their sporting activity for a drink and a chat with their friends and team mates. It's handy when you take the children to the park or the library, or watch them playing football, to know that you can get them a drink, a snack, maybe a baked potato or a sausage roll, and yourself a cuppa to keep you warm.





On Fridays between 10am and 12pm we run "TG's Coffee Club" where mainly, but not exclusively, retired people can come and get a drink (at a bargain price) and know there will be others there to whom they can chat. We hate to think that anybody might be lacking companionship in our friendly town, and this is a way to meet others in a relaxed and informal way.

### **We are not out of the woods yet**

Because Covid 19 is still with us and still a danger, we politely request that our customers continue to be as careful as possible. Please sanitise your hands on arrival, keep your distance from others and wear masks whenever it is practical to do so. We are lucky to have a modern air handling system, which does not recycle the air, but draws in fresh, clean air from outside which is warmed, using a heat recovery system, by the outgoing air. This is explained in more detail on our website if you are interested. We are all responsible for our own and each other's safety, so please be cautious and considerate.

### **Thank you for the beautiful swifts!**

We are grateful to Charlbury Art Society for organising workshops to make more beautiful mosaic swifts to decorate the library wall. They now appear to be flying in from outside in a swoop of colourful brightness! This picture does not do them justice, please come and see them for yourself. Thanks to all of you who made one. It was a great collaborative effort,



highlighting the pride the people of Charlbury have in the fact that the swifts come here from Africa every summer to nest in our buildings.

### **Happy Christmas**

We plan to have carol singing on Saturday 18<sup>th</sup> December, early evening, in conjunction with St Mary's Church and Jennie Grierson, the music teacher at Charlbury School. Please save the date for a good bit of Christmas cheer! This picture is of our socially distanced carol



singing in 2020.

We are delighted with the support we are still getting from the people of Charlbury after four years of operation, and we feel proud that the Community Centre is helping Charlbury to become a healthier and fitter town.

There are too many things going on to mention them all here, but do browse our website to find out more.

[www.charlburycommunitycentre.org](http://www.charlburycommunitycentre.org).

You can also follow us on Facebook:  
@Charlburycommunitycentre or  
Instagram: charlbury.community.centre

*Tanya Stevenson, Trustee,  
The Thomas Gifford Trust*

# PELLMANS

## Your Local Solicitors

- **Business and Employment Law**  
Contracts, Legal Compliance  
and Disputes
- **Property**  
Residential, Commercial  
and Agricultural
- **Wills, Probate and Trusts**  
Tax Planning and Lasting  
Powers of Attorney

**01865 884400**

**[www.pellmans.co.uk](http://www.pellmans.co.uk)**

**1 Abbey Street, Eynsham, Oxford OX29 4TB**  
*Home visits and evening appointments available*

# BLENHEIM TAXIS

Local/National     Airport Transfers  
Airport specialists  
Complimentary Wi-Fi  
Charlbury based

**07773 000 444**

[www.blenheimtaxis.com](http://www.blenheimtaxis.com)

email: [enquiries@blenheimtaxis.com](mailto:enquiries@blenheimtaxis.com)

All major credit cards accepted  
Corporate accounts welcomed



Looking for the perfect gift ?  
 Do you need a beautiful decoration to complete your tree ?  
 At Cotswold Frames we aim to cater for everyone's taste.  
 Your one stop shop this Christmas.  
 Not just framers ~ What will you discover ?



Market St ~ Charlbury ~ OX7 3PL ~ 01608 811805  
[www.cotswoldframes.co.uk](http://www.cotswoldframes.co.uk) ~ [info@cotswoldframes.co.uk](mailto:info@cotswoldframes.co.uk)



## News from the Charlbury Patient Participation Group (CPPG)

### Vaccination clinics

Staff at the Charlbury Medical Centre and volunteers have been busy over the last few weeks administering vaccines, and organising and marshalling the COVID and 'flu vaccination clinics. 1,600 'flu jabs were administered, but we do not yet have the numbers for the COVID booster.

Given the large numbers of patients involved there were inevitably a few hiccoughs, especially in managing the queues, but we hope we have learnt from the experience and that future clinics will run more smoothly. We would like to thank all volunteers who gave up their time. Anyone who would like to be involved in marshalling future clinics, please contact: [patientgroup.charlbury@nhs.net](mailto:patientgroup.charlbury@nhs.net).

It was disappointing that some people did not turn up for their COVID booster despite having booked appointments.

**CMC News:** The CMC website is still in the process of being updated so not all information on staff changes on the website is accurate at the time of this going to press.

### Current Staff Changes within the practice.

Dr. Khan is providing cover for Dr. Hurney while she is on maternity leave, and feedback suggests that he has been much appreciated by patients. Kirsty McVey has replaced Helen Jones as senior nurse. Asthma, Diabetic and COPD clinics are now up and running.

Niall Malone has replaced Rhianon as first contact physiotherapist providing the same service as outlined in the last edition of the Chronicle and is at the CMC on Wednesdays. To book an appointment to speak to Niall please ring medical reception after 9:00am.

**The Clinical Pharmacist** who recently resigned has not yet been replaced.

**Reception:** We welcome Judy and

Sally who have recently joined the practice in reception.

**E-consult** is now available via the CMC Website. You can request an online consultation with a GP or administrative help via this link and you should get a response within 24 hours.

**Booking an Appointment:** All bookings for appointments should be made by phone or via e-consult. The on-line booking service is not functioning at time of going to press. Patients are still being asked **not** to come to reception to book their appointments. Only ring at 8:00 am if you require a same day URGENT appointment, for all other appointments ring after 9:00am.

We are continuing discussions with CMC as to the best way to access a 'soon' appointment. Many patients do not have an urgent complaint, ie do not need a same day appointment but do have a condition that would benefit being seen soon, ie not several weeks in the future. The current wait to see your GP is 2-3 weeks.

Doctors are now offering 15 minute instead of 10 minute appointments. It is important that appointments are kept within this time frame so that subsequent patients' appointments are not delayed.

**Comments from patients:** The CPPG is always happy to hear about patient experience, (both positive and negative) of using the Practice.

One of the aims of the CPPG is to keep the Practice informed of patient views. We are continuing to work with CMC to make the complaints procedure more user-friendly.

Finally, a reminder from the **Ambulance Service**, as the evenings lengthen and become darker, to ensure your house number/sign is clearly visible and well-lit. This can save valuable time.

*Deborah Hoffman*



**TOGETHER, WE'RE BUILDING  
A NATION OF LAWN LOVERS**

FROM JUST

**£15\***

PER TREATMENT

\* Based on a lawn size  
up to 40m<sup>2</sup>

## REVOLUTIONISING LAWN CARE

With our passion for innovative solutions and most importantly, our love for lawns, we'll ensure your lawn takes pride of place as your garden's crowning glory, all year long.

Our ground-breaking Lawn Treatment Programmes feature four fantastic NutraGreen Treatments, plus an application of our newly improved Oasis Water Conserver. Our unique Standard and Ultimate Programmes include even more benefits to ensure your lawn remains weed-free, luscious, and of course, beautifully green!

*Let's create the lawn we both love*

Start your Lawn Care journey today: Call: 01869 345335

Email: [banbury@greenthumb.co.uk](mailto:banbury@greenthumb.co.uk)

Visit: [greenthumb.co.uk](http://greenthumb.co.uk)

**GreenThumb**  
LAWN TREATMENT SERVICE 

HN VG

## Hook Norton Veterinary Group

### Have you heard about our Lifetime Care Club?

It provides all your pet's preventative healthcare, AND it saves you money.

- » Annual vaccinations,
- » 6 month health check,
- » flea & worming treatments &  
» free nurse clinics

are all included to protect your pet for an entire year.

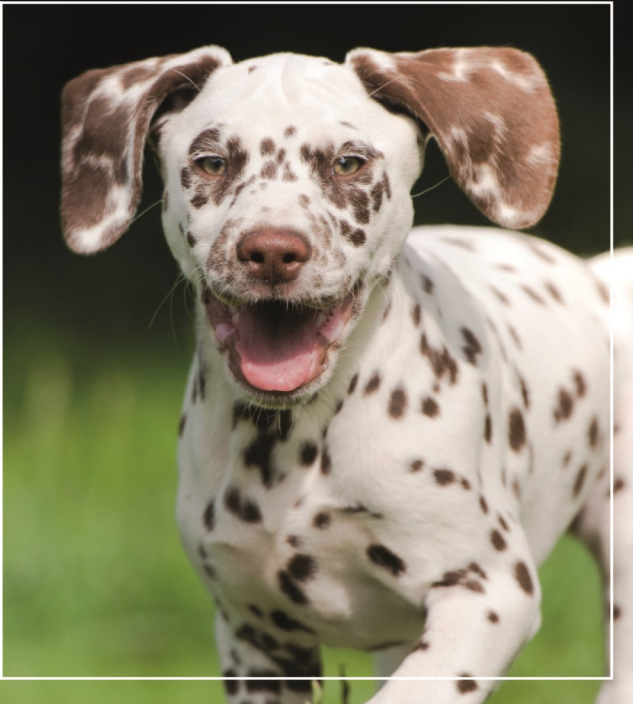
### Charlbury Surgery

T: 01608 811250

### Hook Norton Hospital

T: 01608 730085

[www.hooknortonvets.co.uk](http://www.hooknortonvets.co.uk)





## Wigwell—Past, Present and Future

Thinking about this 100<sup>th</sup> edition of the Charlbury Chronicle, I realised that the first edition must have been issued around the same time that a conservation lease for Wigwell was first granted to Charlbury Town Council in 1995. So I thought this would be a good opportunity to look back at the history of Wigwell as well as telling you what is going on there now and the exciting plans for the future.

From early maps, notably the “Thomas Pride map” dated 1761, we know that the current field pattern around Wigwell has remained largely unchanged for 250 years and that the area north of the stream has been pasture land throughout that time. The Thomas Pride map also shows a spring marked as “Wigwell” just below the present cemetery.



The windmill for pumping water, Wigwell

Springs, of which there are many, have played an important role in the history of Wigwell and indeed the site provided a water supply to

the town from the late 19<sup>th</sup> century through to the 1960s. The windmill shown in the photo was used to pump water into a small reservoir and remnants of the windmill structure can still be found on the site. You can find

out more about the town’s water supply in the museum or, thanks to Judy Dod, in a news item on the Charlbury website at <https://www.charlbury.info/news/3598> . Water extraction ceased at Wigwell in the 1960s and the springs were capped but the land is still owned by Thames Water.

Some of the longstanding pasture lands on the site have particularly rich meadow grassland flora and an area north of the stream is one of only a handful of sites in the country in which the “near threatened” Meadow Clary (*Salvia Pratensis*) grows naturally. Because of this, the area has been designated a Local Wildlife Site and Thames Water

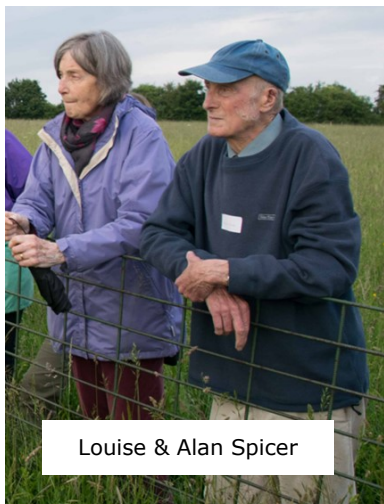


Rich Meadow Flora



Meadow Clary

granted a conservation lease to the town council in 1995 so that it could be managed for wildlife and biodiversity. The late Alan Spicer (a noted botanist, environmental and co-founder of the Wychwood Project) with his wife Louise pioneered work on Wigwell and led a group of volunteers to advise the council and look after the site. In 2015, the lease was transferred to the Wychwood Project (now the Wychwood Forest Trust) who continue to manage the site for



Louise & Alan Spicer

wildlife. The Wigwell Friends group was formed from the previous volunteers to support the Wychwood Project with the management of Wigwell and I am delighted that the Wigwell Friends group has grown and now numbers nearly 50 local volunteers.

The Friends take part in regular work parties led by Toby from the Wychwood Forest Trust and assisted by Cotswold Voluntary Wardens to manage habitats and important species, control invasive vegetation, improve footpaths, repair fencing and other work to enhance the site for wildlife and for local people to enjoy. After a difficult Covid year in 2020 we have been pleased to be able to resume work parties this year and Friends have also taken part in

monitoring of butterflies and reptiles (healthy populations of grass snakes, slow worms and common lizards have been observed) to help build a record of the wildlife present on the site.

Neil from the Wychwood Forest Trust has ambitious aspirations for the future management of Wigwell to enhance and create new habitats through controlled natural processes. For example, some encroachment by blackthorn is being permitted and monitored in specific areas to provide denser cover and more diverse habitats.

Excitingly, plans are now underway to deploy natural "leaky dams", also known as "Beaver Dam Analogues" at selected locations in the stream to control water flow and crucially to generate wetland habitats. It may also be possible to exploit some of the existing springs on the site to generate or enhance wetland areas.

Wigwell has also been selected as a site for early work as part of the Evenlode Smarter Water Catchment Plan to address water quality and flooding risks in our river and waterways. Work on this is expected to start very soon.

Crucially, community engagement is a vital feature underpinning all of the work plans on Wigwell and will include a special focus on our young people, through schools, scouts, guides and other groups.

We at the Wigwell Friends aim to keep you up to date with developments through the Chronicle and our page on the Charlbury website but why not get involved! I would be delighted to welcome you to join us anytime – just drop me an email to [wigwell.friends@gmail.com](mailto:wigwell.friends@gmail.com) .

I look forward to hearing from you!

*Peter Kenrick – Wigwell Friends*

**Coffee Break page answers**

- 50. Katy Perry
- 49. Florence Griffith-Joyner
- 48. *The Mystrious Affair at Styles*
- 47. Big Dipper
- 46. Space shuttle
- 45. George Burns
- 44. 10-carat diamond
- 43. 100% biodegradable
- 42. Walter Hilton, *Scale of Perfection*
- 41. The hundred
- 40. A coil of rope
- 39. 1 July 2021
- 38. Hekatomphobia/centumphobia
- 37. 950288841971693993751
- 36. Century break
- 35. Bangkok
- 34. Mexico City
- 33. Philosophy and psychology
- 32. Rip Van Winkle
- 31. Starbuck
- 30. The atmosphere of the Earth
- 29. Belgium
- 28. Senate
- 27. Hands
- 26. 10 April
- 25. Cien
- 24. Ruthford B. Hayes
- 23. Rosh Hashanah
- 22. Volforb
- 21. Football
- 20. Abraham/Abram
- 19. Scrabble
- 18. Gabriel Garcia Marquez
- 17. Gogol
- 16. Drake
- 15. Hectometer
- 14. Winnie the Pooh
- 13. Benjamin Franklin
- 12. Usain Bolt
- 11. Centenarian
- 10. Wilt Chamberlain
- 9. Water/H<sub>2</sub>O
- 8. 1,2,4,5,10,20,25,50,100
- 7. 1100100
- 6. *The Sleeping Beauty/Aurora*
- 5. Fermium
- 4. John the Evangelist
- 3. France
- 2. Century
- 1. C

# Brian's Barber Shop

Formally Charlbury Barbers.

**01608 810630**

Senior citizens day every day!

Opening times:

Mon. closed. Tues. 9-1 2-5.30. Wed. 10-1 2-6.30. Thurs. 9-1 2-5.30 Fri. 9-1 2-5.30. Sat. 7-1

## DIRTY CARPETS, UPHOLSTERY, RUGS



**Most carpets dry within the hour**

**Unbeatable results, removes almost all spots & stains call**

**GRIMEBUSTERS**

**01993 868924 01865 726983**

**www.grimebusters.co.uk**

Thinking of selling your Jewellery?



Mallams' specialist Louise Dennis FGA DGA, is available to give **free** confidential valuations on any piece(s) you are considering selling at auction.

**Home visits also available**

Enquiries:  
01865 241 358 or louise.dennis@mallams.co.uk  
[www.mallams.co.uk](http://www.mallams.co.uk)



# CHARLBURY COMMUNITY DIRECTORY

Please note that it is the responsibility of each organisation listed in the Community Directory to notify any changes to the Editor

**Artweeks** - Wendy Clifford (01608 810006)

**All Together In Charlbury (ATIC)**

To request help (01993 776277). To contact management committee (07487 413892)

**Baptist Church** - Kay Colyer (01608 810107)  
[charlburybaptistchurch@gmail.com](mailto:charlburybaptistchurch@gmail.com)

**Charlbury Amateur Dramatic Society (CADS)**

Helen Wright, Secretary  
[charlbury.drama@gmail.com](mailto:charlbury.drama@gmail.com)

[www.charlbury-drama.com](http://www.charlbury-drama.com)

**Charlbury Art Society (CAS)** Sec: Kati Eidenbenz (01608 810911)

[secretary@charlburyarts.co.uk](mailto:secretary@charlburyarts.co.uk)

**Charlbury Beer Festival** - Nick Millea  
[nick.millea@btinternet.com](mailto:nick.millea@btinternet.com)

[www.charlburybeerfestival.org](http://www.charlburybeerfestival.org)

**Charlbury Beer & Wine Circle** - John Moore (01608 810700)

**Charlbury Bowls Club** - Shaun Morley  
[enquiries@charlburybowls.co.uk](mailto:enquiries@charlburybowls.co.uk) (01993 868134)

**Charlbury Canoe Club** - Hugh Belshaw

(01608 810130) [hughandjoan@uwclub.net](mailto:hughandjoan@uwclub.net)

**Charlbury Chronicle** - Susie Finch (07879 693733)  
[editor.chronicle@outlook.com](mailto:editor.chronicle@outlook.com)

**Charlbury Community Centre**—Daniela Jenkins (01608 811878)

**Charlbury Community Speedwatch** —  
[charlburysw@gmail.com](mailto:charlburysw@gmail.com)

**Charlbury Cricket Club** - David Horne Vice  
Chairman [dw3horne@gmail.com](mailto:dw3horne@gmail.com)

[www.charlburycricketclub.co.uk](http://www.charlburycricketclub.co.uk)

**Charlbury Day Centre** - Bob Tait (01608 810150)

**Charlbury & District Probus Club** Mike White (07710 296814)  
[mike.ewhite7@gmail.com](mailto:mike.ewhite7@gmail.com)

**Charlbury Green Hub** - Christine Elliott (01608 811057)  
[www.charlburygreenhub.org.uk](http://www.charlburygreenhub.org.uk)

**Charlbury Garden Society**  
[secretary@charlburygardensociety.org.uk](mailto:secretary@charlburygardensociety.org.uk)

[www.charlburygardensociety.org.uk](http://www.charlburygardensociety.org.uk)

**Charlbury Ladies Luncheon Club**—Gill Grason (01608 810154) and Frances Canham (01608 811176)

**Charlbury Morris** - Peter Smith (01608 811007)  
[peter@charlburymorris.org](mailto:peter@charlburymorris.org)

[www.charlburymorris.org](http://www.charlburymorris.org)

**Charlbury Museum** - Curator—

[curator@charlburymuseum.org.uk](mailto:curator@charlburymuseum.org.uk)  
**Charlbury Open Gardens** - Catherine Goyder

[csggardens@charlburystreetfair.org](mailto:csggardens@charlburystreetfair.org)

**Charlbury Patient Participation Group**  
[patientgroup.charlbury@nhs.net](mailto:patientgroup.charlbury@nhs.net)

**Charlbury Pioneer Country/Western Club**  
(Ray & Margaret) (01993 831345)

**Charlbury Pre-School**—Emily Dytor  
[emilydytor@gmail.com](mailto:emilydytor@gmail.com) (01608 811200)

**Charlbury Royal British Legion** - Nick Potter (01608 810388)

**Charlbury School** -Head (01608 810354)  
[office.2100@charlbury.oxon.sch.uk](mailto:office.2100@charlbury.oxon.sch.uk)

[www.charlbury.oxon.digitalbrain.com](http://www.charlbury.oxon.digitalbrain.com)

**Charlbury School Association** -  
[office.2100@charlbury.oxon.sch.uk](mailto:office.2100@charlbury.oxon.sch.uk)

**Charlbury Scout Group** - Cheryl Hornsby -  
[cheryl@redstonecomputers.co.uk](mailto:cheryl@redstonecomputers.co.uk)

**Charlbury Society** - Chairman, Nikki Rycroft  
[n.rycroft@doctors.org.uk](mailto:n.rycroft@doctors.org.uk)

**Charlbury Street Fair** - Chairman—John Dora (01608 811328)  
[jmdora@btinternet.com](mailto:jmdora@btinternet.com)

**Charlbury Tennis Club** - Mark Jarman (01608 811692)  
[charlburytennis@hotmail.co.uk](mailto:charlburytennis@hotmail.co.uk)

**Charlbury Town Council**—Lisa Wilkinson—clerk (07311 257412)  
[charlburytownclerk@gmail.com](mailto:charlburytownclerk@gmail.com)

**Charlbury Town Football** - Keith Claridge (01608 810201 or 07870 426707)

**Charlbury Town Youth Football Club** - James Ball (01608 810270)  
[jolliecat@btinternet.com](mailto:jolliecat@btinternet.com)

**Charlbury Women's Institute** - President -  
Miriam Evans (01608 430807)

[charlburywi@oxfordshirewi.co.uk](mailto:charlburywi@oxfordshirewi.co.uk)

**ChOC Cinema** - Jackie Hague (01608 810713)

**Corner House Community Bookshop**—Neil Pakenham-Walsh (01608 811899)

**Corner House and Memorial Hall** -Office (01608 810879)

**Churches Together** - Rosalind Scott, (01608 810562)  
[rosalind.scott@hotmail.co.uk](mailto:rosalind.scott@hotmail.co.uk)

**Cotswolds Voluntary Wardens** - Simon Walker (01608 811414)  
[simon.iets@btinternet.com](mailto:simon.iets@btinternet.com)

**Dementia Friendly Charlbury**— Meryl Smith (01608 810192)  
[charlburydf@gmail.com](mailto:charlburydf@gmail.com)

**Friends Meeting House:** Sue Terry (01608 811033) email: [sueeterry@btinternet.com](mailto:sueeterry@btinternet.com))

**Holiday Club**  
[parishoffice@stmaryscharlbury.co.uk](mailto:parishoffice@stmaryscharlbury.co.uk)

**Macmillan Cancer Care** - Liz & Bob Tait (01608 810150)

**Methodist Chapel** - Sue Tokumine (01608 810366)  
[suetok@hotmail.com](mailto:suetok@hotmail.com)

**Mind in Chipping Norton** (Mental Health Support) (01608 645296)

**Riverside Festival** - Andy Pickard (01608 810635)  
[admin@riversidefestival.charlbury.com](mailto:admin@riversidefestival.charlbury.com)

[www.riversidefestival.charlbury.com](http://www.riversidefestival.charlbury.com)

**St Marys C of E Church** Rev Sally Welch (01608 810230)

**St Teresa's RC Church** Fr Clive Dytor (07484 158642)

**Sustainable Charlbury** - Liz Reason (01608 811212)

**The Bell Inn** (01608 810278)

**The Bull Inn** (01608 810689)

**Thomas Gifford Trust**- Chris Potts (01608 811878)  
[chris.potts@blakemorgan.co.uk](mailto:chris.potts@blakemorgan.co.uk)

**United Nations Association (West Oxfordshire)** – Neil Pakenham-Walsh (01608 811338)

**Walkers are Welcome** Paul Jackson 01608 811370  
[pauljackson1@outlook.com](mailto:pauljackson1@outlook.com)

**Wilderness Festival**—[www.wildernessfestival.com](http://www.wildernessfestival.com)

**Wychway Border Morris** - Teresa Duester (01608 810934)

[www.charlbury.info](http://www.charlbury.info) - Richard Fairhurst



## Charlbury's Police Community Support Officer

**C9837 Wesley Smith**

To speak to us about any concerns you may have:

**call 101** if it's a non-emergency

**or 999** in an emergency

[www.thamesvalley.police.uk](http://www.thamesvalley.police.uk)

also sign up for free crime alerts

[www.thamesvalleyalert.co.uk](http://www.thamesvalleyalert.co.uk)

## CHRONICLE ADVERTS

Advertise your business in the **Charlbury Chronicle** and reach over 1550 residences.

To place an advert please ring Graham Jowett on 01608 810666 or email:  
[gjowettchronicle@btinternet.com](mailto:gjowettchronicle@btinternet.com)

## MAILING LIST

We have a mailing list for people wishing to receive the *Charlbury Chronicle* who no longer live in the town. **Now £4.50 per four issues; £6 per four issues for overseas subscribers.** Large-print £2.50 for **each** copy. If you wish to be put on the mailing list, please contact Dawn Colvin (address in right hand panel).

Please note that **ALL** cheques for advertising, mailing list or donations should be made payable to *The Charlbury Chronicle* and should be sent to The Treasurer, Graham Jowett, whose address is in the panel on the right.

## CHARLBURY CHRONICLE CONTACTS

Editor: Susie Finch

tel: 07879 693733

e-mail: [editor.chronicle@outlook.com](mailto:editor.chronicle@outlook.com)

Assisted by:

Julia Caston: 01608 810240

Barbara Allison: 01608 811262  
and others

Treasurer & Advertising:

Graham Jowett,

2 Lees Heights, Charlbury OX7 3EZ

tel: 01608 810666

[gjowettchronicle@btinternet.com](mailto:gjowettchronicle@btinternet.com)

Mailing List: Dawn Colvin

3 Enstone Road, Charlbury OX7 3QR

tel: 01608 810545

Distribution:

Brian and Shelagh: 01608 819091

Robert Caston: 01608 810240

*And thanks to Pauline Jackson for proof-reading this issue of the Chronicle.*

The **Charlbury Chronicle** is produced and distributed free to every household in Charlbury. All those involved in its preparation work on a voluntary basis.

The **Charlbury Chronicle** aims to be impartial and independent and cannot be held responsible for any of the views expressed in its pages. The editor reserves the right to alter or adapt any articles submitted for publication although hoping to discuss any major changes with the authors first.

The **Charlbury Chronicle** acknowledges the support of our advertisers and individuals who generously contribute to its funds and hope that any reader using their services will mention the **Charlbury Chronicle**.

Printed by

KMS Litho Ltd, Hook Norton, OX15 5LS

01608 737 640

[enquiries@kmslitho.co.uk](mailto:enquiries@kmslitho.co.uk)

[www.kmslitho.co.uk](http://www.kmslitho.co.uk)

# Specialist Private Client Lawyers & Tax Professionals

Trusted advisors to individuals and their families

“An outstanding niche private client firm...its practitioners are recommended as experts in their field, providing high-quality advice...its client service is second to none and every client is valued equally and treated with sensitivity and genuine compassion.”



We can assist you with specialist legal advice on Wills, inheritance tax planning, powers of attorney, helping with probate and generally protecting your assets. We also help protect the vulnerable or elderly.

Our tax specialists are also here to help with your personal tax compliance, including preparing personal tax returns and offering guidance on HMRC correspondence. They can also advise you on tax planning on the sale/gift of assets, including the new reporting of capital gains on the sale of private residences.

Dealing with your own affairs and getting them in order can appear daunting. We're here to make life easier. Do pick up the phone or email us and we would be happy to have a free, no-obligation initial chat with you. We can meet on video call or in person when safe to do so.



**Anna Burnside** PARTNER  
anna.burnside@theburnsidepartnership.com

**Jacqui Birks** TAX DIRECTOR  
jacqui.birks@theburnsidepartnership.com

For further information, please contact:  
[info@theburnsidepartnership.com](mailto:info@theburnsidepartnership.com)



The Carpenters' Workshop, Blenheim Palace Sawmills, Combe, Oxfordshire OX29 8ET  
T 01865 987 781 E [info@theburnsidepartnership.com](mailto:info@theburnsidepartnership.com) W [www.theburnsidepartnership.com](http://www.theburnsidepartnership.com)

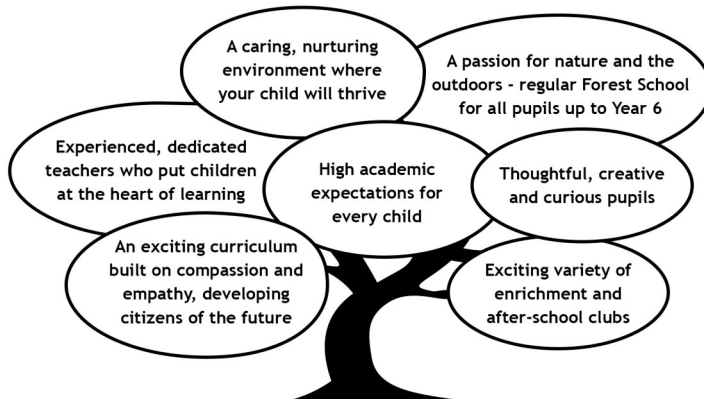
FOLLOW US ON:

## Stonesfield Primary School

Learning together to achieve our best.



Looking for a friendly, inclusive, local school for your child with high academic standards? Stonesfield Primary School has places in all year groups - we would love to show you around.



To arrange a tour with the headteacher, Mr Ben Trevail, please contact the school office.

Tel: 01993 891687

Office email: [office.2353@stonesfield.oxon.sch.uk](mailto:office.2353@stonesfield.oxon.sch.uk)

Headteacher email: [head.2353@stonesfield.oxon.sch.uk](mailto:head.2353@stonesfield.oxon.sch.uk)

# SHAW & Co.

Providing legal advice in London and Oxfordshire for 35 years

1 Church Street

Charlbury

Oxfordshire OX7 3PW

Telephone 01608 810100

andrew@shawandcompany.co.uk

**Wills, Probate and Administration**

**Powers of Attorney**

**Executor & Trustee Services - Inheritance Tax Planning**

**Property - House and Flat Conveyancing**

**Commercial Leases and Landlord and Tenant matters**

Commissioners for Oaths

*"...probably the best and most approachable lawyers I have ever used....."*

10 Market Place  
Chipping Norton,  
Oxon OX7 5NA  
Tel: 01608 644808  
Fax 01608 644809



1 Church Street  
Charlbury  
Oxon OX7 3PW  
Tel: 01608 811146  
Fax 01608 810050

22 The Parade  
Oxford Road  
Kidlington,  
Oxford OX5 3DB

[www.fairfaxandcompany.co.uk](http://www.fairfaxandcompany.co.uk)  
[charlbury@fairfaxandcompany.co.uk](mailto:charlbury@fairfaxandcompany.co.uk)

15 High Street  
Bloxham  
Banbury  
Oxon OX15 4LT

**Free Valuations No Sale—No Fee**  
**Specialist Lettings Department**  
**Independent Mortgage Advice**  
**Low Cost Buildings Insurance**

**Fairfax & Co. offer unbeatable value and expert property advice from professionals**